



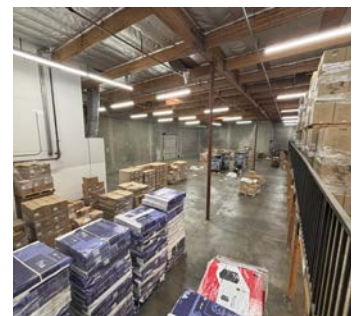
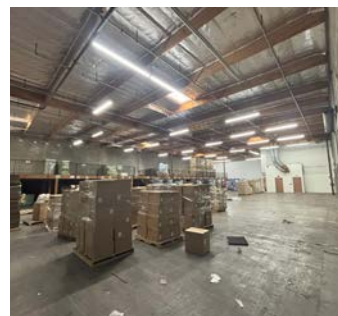
**4517 Littlejohn St. Baldwin Park, CA 91706**

## Property Highlights

- ±21,000 SF Freestanding Building
- Approximately ±3,200 SF Two (2) Story Office
- 2 Dock-High Loading Positions w/ Load Levelers Installed
- 2 Ground-Level Doors
- 22' to 25' Clear Height
- Private Fenced Yard Area

Note: ±5,500 SF Warehouse Mezzanine Included in Rentable SF

**\$1.35 Per SF/ Month Gross**



LOCAL EXPERTISE. INTERNATIONAL REACH. WORLD CLASS.