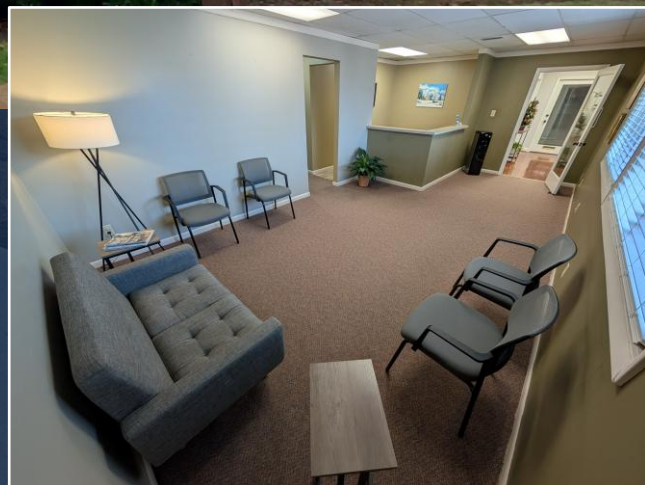


EXECUTIVE OFFICE SPACES CHAPEL HILL | FOR LEASE

TRIANGLE
COMMERCIAL REAL ESTATE



EXECUTIVE OFFICE SPACES

1 OF 9 REMAINING

Available Now

Nine (9) Individually Leased Offices with Shared
Waiting Area, Kitchenette / Breakroom and Two (2) Restrooms

Professional Setting | Private Workspace | Essentials Included
Ideal Location | Ample Parking | Flexible Term | Economical Rate

TRIANGLE
COMMERCIAL REAL ESTATE

[VIEW LISTING](#)



1717 LEGION RD, STE 201-202
CHAPEL HILL, NC 27517

VILLAGE OFFICE PARK

FOR LEASE | CHAPEL HILL, NC

OFFICES LEASED INDIVIDUALLY | SEE FLOOR PLAN

CONVENIENT ACCESS

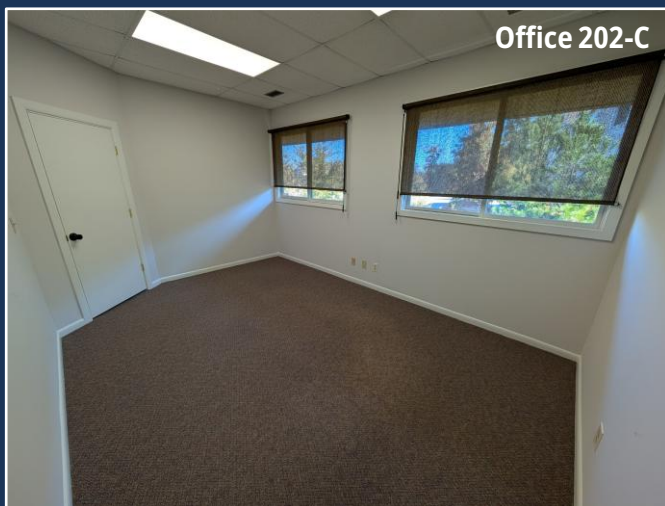
I-40 | US Hwy 15-501

AVAILABLE OFFICES

| OFFICE | MONTHLY RATE | SIZE | AVAILABILITY |
|--------------|--------------|----------------|--------------|
| 201-A | - | ±197 SF | LEASED |
| 201-B | - | ±210 SF | LEASED |
| 201-C | - | ±89 SF | LEASED |
| 201-D | - | ±155 SF | LEASED |
| 201-E | - | ±108 SF | LEASED |
| 202-A | - | ±120 SF | LEASED |
| 202-B | - | ±122 SF | LEASED |
| 202-C | \$650 | ±156 SF | NOW |
| 202-D | - | ±92 SF | LEASED |



Office 202-C



Office 202-C

LEASE DETAILS

| | |
|-------------------------|--|
| TERM | One (1) Year Minimum |
| TYPE | Full Service |
| INCLUDED | Electric, Water, Janitorial, TICAM Wi-Fi Access Available for \$25.00/Month |
| SECURITY DEPOSIT | Equivalent to One (1) Month's Rent |

NEARBY RESTAURANTS & SHOPPING

Alpaca | CAVA | Chopt | Chick-fil-A | Cookout | Drift Coffee
bartaco | Breadman's | Stoney River | Squid's | Casual Pint
Food Lion | Trader Joe's | Wegmans | Whole Foods

LEASING CONTACT

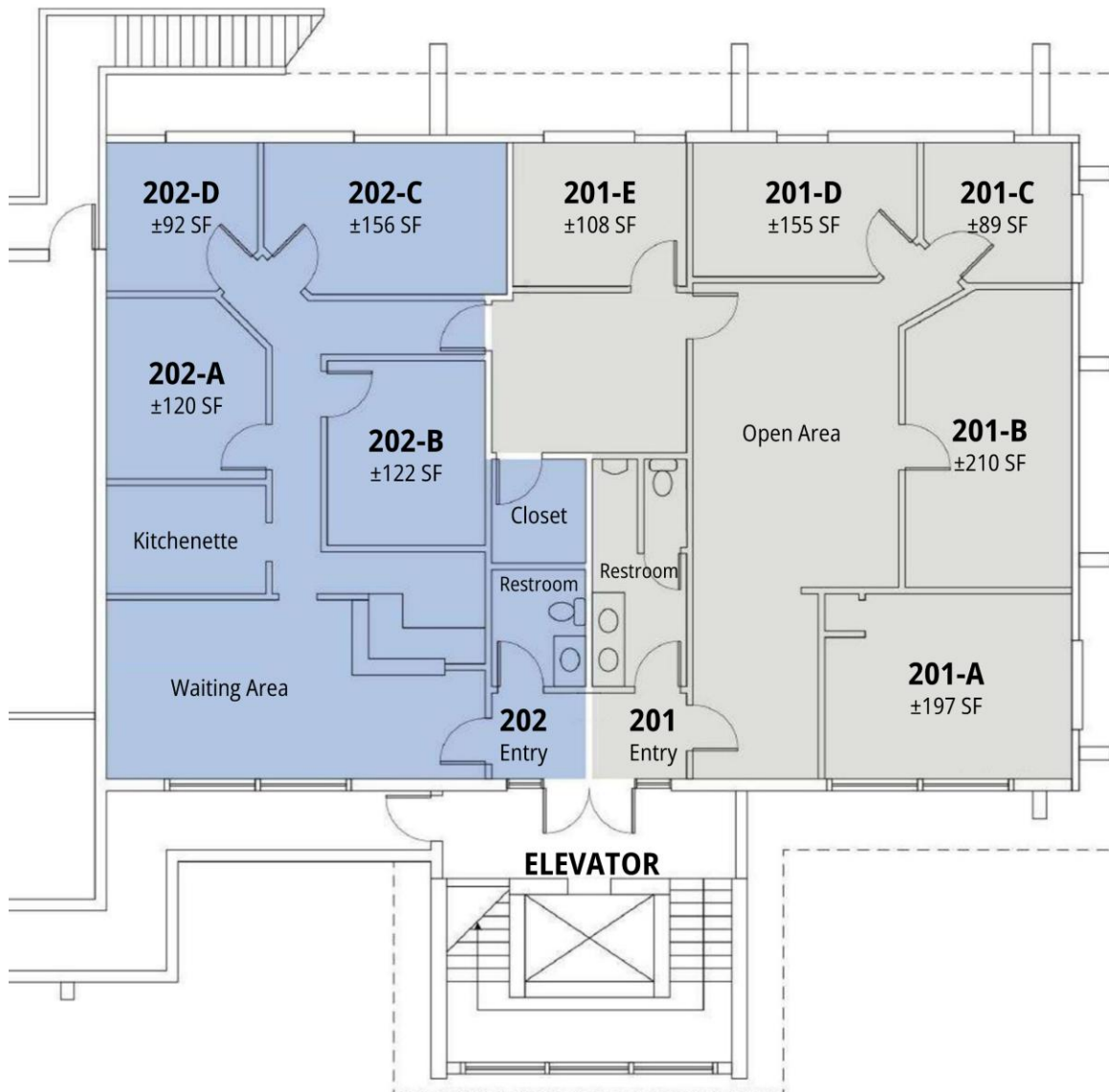
Nate Haskins
Nate@TriangleCRE.com | 919.744.6827

FLOOR PLAN

1717 LEGION RD, STE 201-202
CHAPEL HILL, NC 27517

Not Drawn to Scale | Dimensions Approximate

| OFFICE | AVAILABILITY |
|--------------|--------------|
| 201-A | LEASED |
| 201-B | LEASED |
| 201-C | LEASED |
| 201-D | LEASED |
| 201-E | LEASED |
| 202-A | LEASED |
| 202-B | LEASED |
| 202-C | NOW |
| 202-D | LEASED |



TRIANGLE COMMERCIAL REAL ESTATE

1631 MIDTOWN PL, STE 104-175
RALEIGH, NC 27609

TriangleCRE.com