



FOR LEASE

Downtown Office Space

30 East Broadway
2nd Floor Office
Eugene OR 97401

OFFICE SPACE DETAILS

- Centrally located ground & second floor office space
- Spaces on the second floor can be combined or leased separately
- Building is ADA accessible with elevator service
- Parking structures available within walking distance
- \$1.25 - \$1.50/SF/Month, Fully Serviced

**Evans
Elder
Brown &
Seubert**

COMMERCIAL REAL ESTATE

CONTACT

Stephanie Seubert
stephanie@eebcre.com

Lilly Storment
lilly@eebcre.com

541.345.4860

Licensed in the State of Oregon.

1st Floor Plan

Office Space • 30 East Broadway • Eugene, Oregon 97401

Evans
Elder
Brown &
Seubert

COMMERCIAL REAL ESTATE

CONTACT

**Stephanie
Seubert**

stephanie@eebcre.com

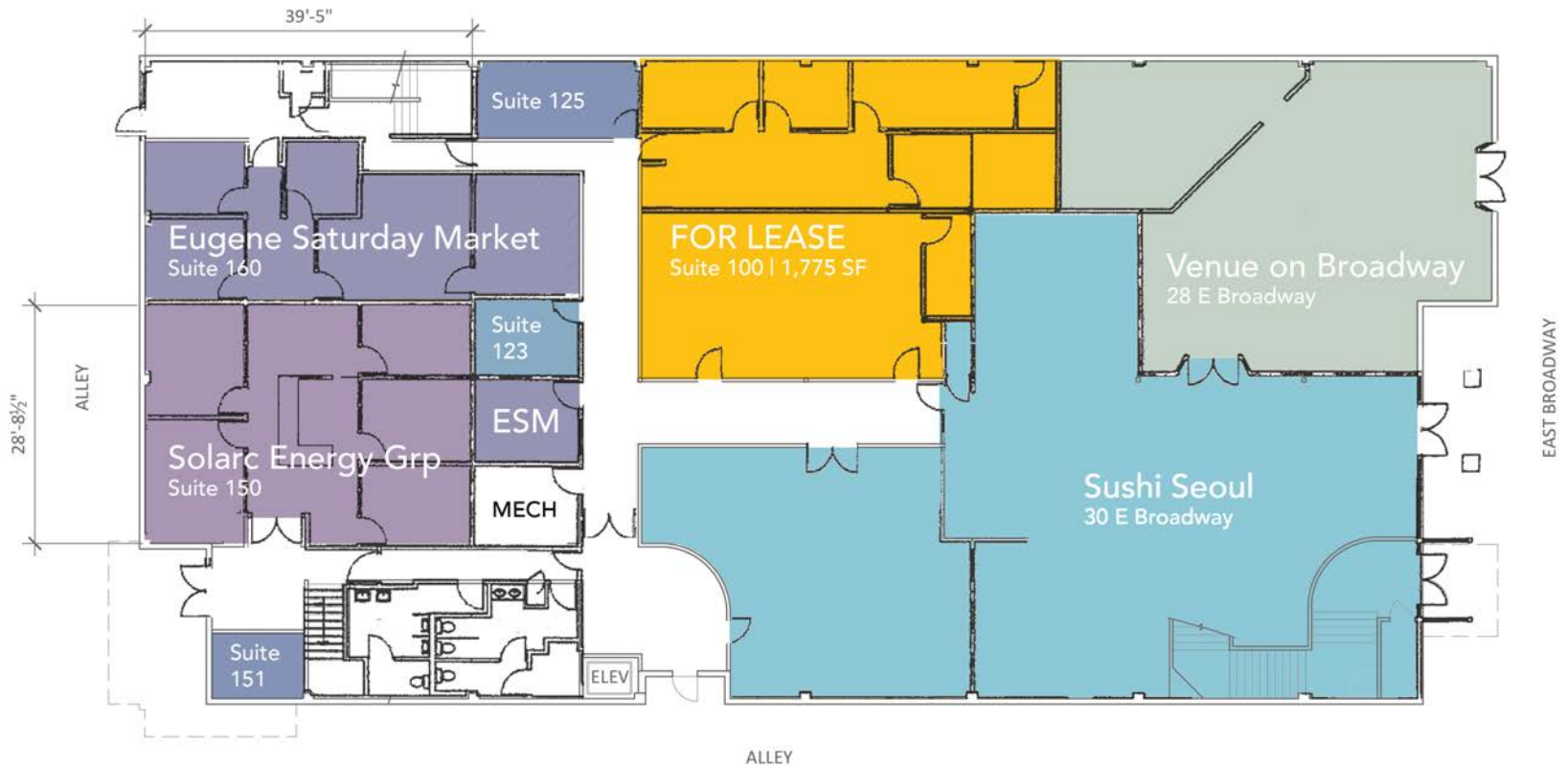
**Lilly
Storment**

lilly@eebcre.com

541 345-4860

101 East Broadway
Suite #101
Eugene, OR 97401

Licensed in the
State of Oregon.



GROUND FLOOR PLAN

1/16" = 1'-0"



2nd Floor Plan

Office Space • 30 East Broadway • Eugene, Oregon 97401

Evans
Elder
Brown &
Seubert

COMMERCIAL REAL ESTATE

CONTACT

**Stephanie
Seubert**

stephanie@eebcre.com

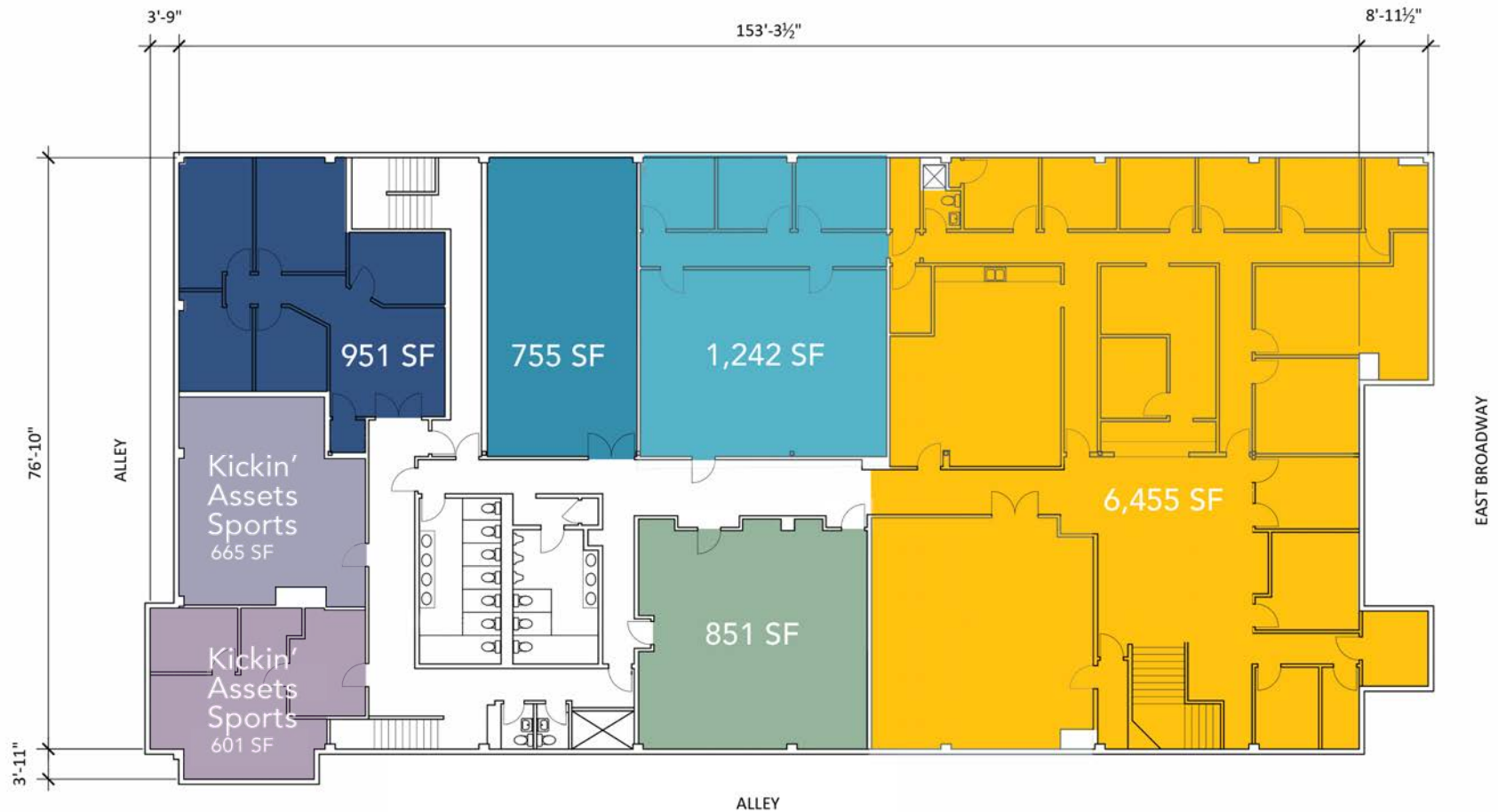
**Lilly
Stormont**

lilly@eebcre.com

541 345-4860

101 East Broadway
Suite #101
Eugene, OR 97401

Licensed in the
State of Oregon.



2ND FLOOR PLAN



Photographs

Office Space • 30 East Broadway • Eugene, Oregon 97401

Evans
Elder
Brown &
Seubert

COMMERCIAL REAL ESTATE

CONTACT

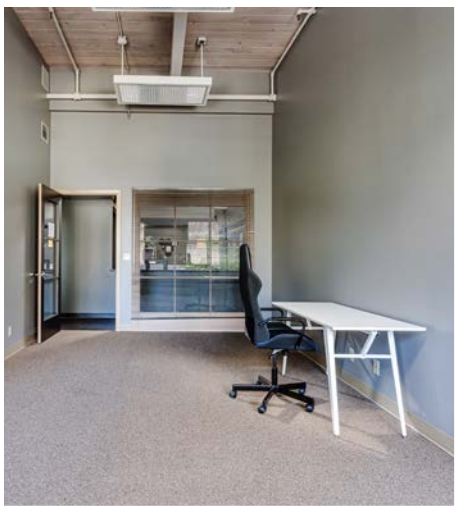
**Stephanie
Seubert**

stephanie@eebcre.com

**Lilly
Storment**

lilly@eebcre.com

541 345-4860



The information in this package was gathered from sources deemed reliable, however Evans Elder Brown & Seubert makes no representation or warranty of the accuracy of the information. Any buyer or tenant considering a purchase or lease of this property should confirm any and all information relied upon in making the decision to purchase or lease prior to finalizing the transaction and bears the risk of all inaccuracies.

Photographs

Office Space • 30 East Broadway • Eugene, Oregon 97401

Evans
Elder
Brown &
Seubert

COMMERCIAL REAL ESTATE

CONTACT

**Stephanie
Seubert**

stephanie@eebcre.com

**Lilly
Stormont**

lilly@eebcre.com



The information in this package was gathered from sources deemed reliable, however Evans Elder Brown & Seubert makes no representation or warranty of the accuracy of the information. Any buyer or tenant considering a purchase or lease of this property should confirm any and all information relied upon in making the decision to purchase or lease prior to finalizing the transaction and bears the risk of all inaccuracies.

Downtown Location

Office Space • 30 East Broadway • Eugene, Oregon 97401

Evans
Elder
Brown &
Seubert

COMMERCIAL REAL ESTATE

CONTACT

**Stephanie
Seubert**

stephanie@eebcre.com

**Lilly
Stormont**

lilly@eebcre.com

541 345-4860

101 East Broadway
Suite #101
Eugene, OR 97401

Licensed in the
State of Oregon.

