

FOR SUBLEASE



# THE SUMMIT

4101 Lake Boone Trail | Raleigh, NC 27607



CAPITAL  
ASSOCIATES®



# THE SUMMIT

4101 Lake Boone Trail | Raleigh, NC 27607

PROPERTY TYPE	Office
BUILDING SIZE	120,254 SF
YEAR BUILT	1989
COUNTY	Wake
LOCATION	Raleigh, NC
FLOORS	5



TRIPP BRADSHAW

919.749.0004 (c)

919.233.9901 (o)

tbradshaw@capitalassociates.com

# THE SUMMIT

4101 Lake Boone Trail | Raleigh, NC 27607

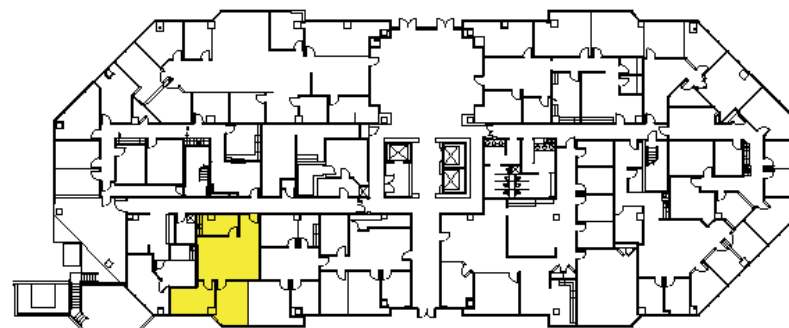
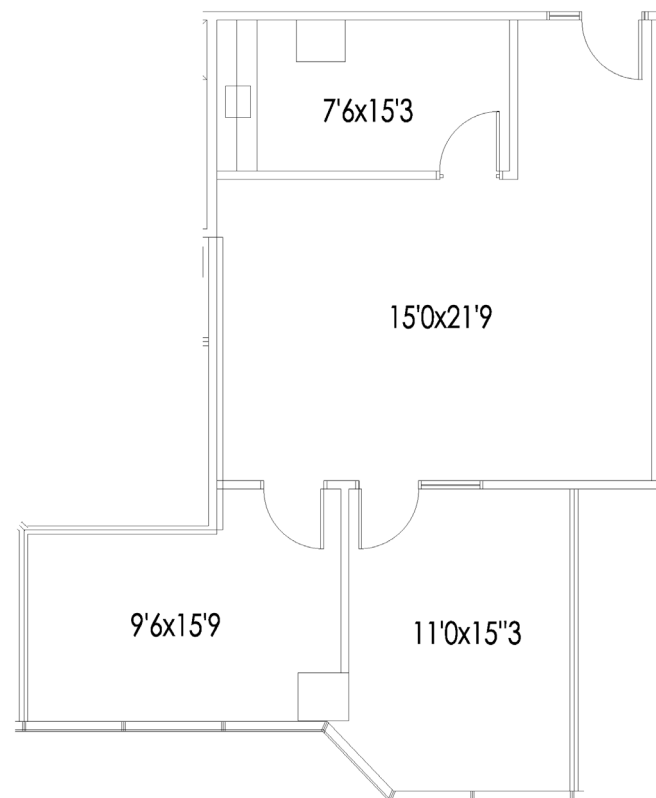
## AVAILABLE Sublease or Direct

### First Floor Suite 109

1,004 SF

Move-in Ready

Sublease Term Expires 9/30/26



**TRIPP BRADSHAW**

919.749.0004 (c)

919.233.9901 (o)

tbradshaw@capitalassociates.com

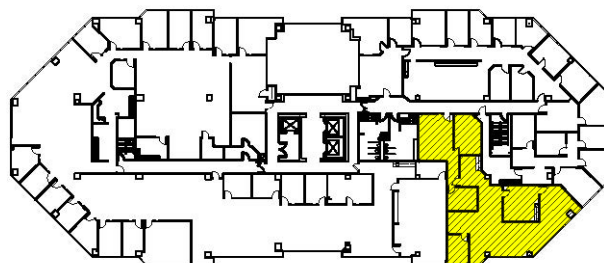
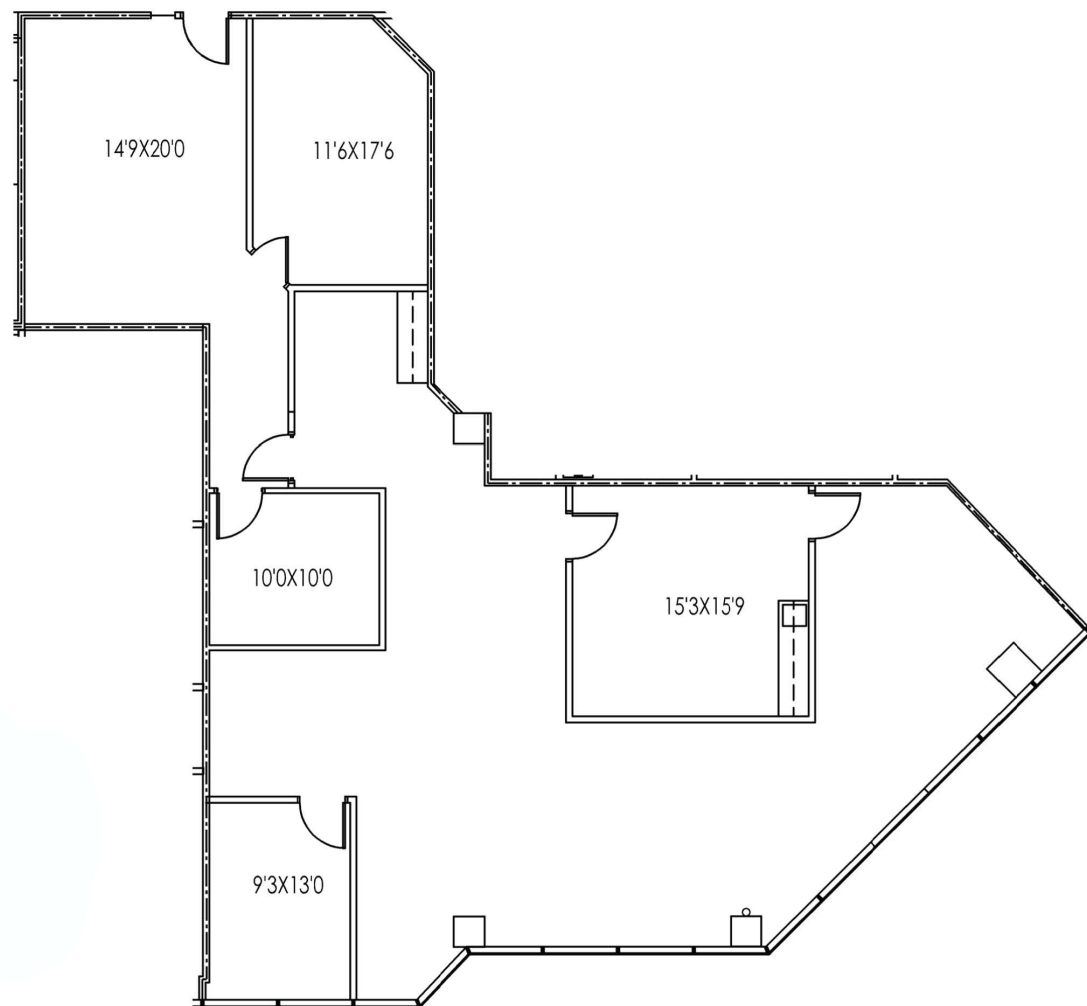
# THE SUMMIT

4101 Lake Boone Trail | Raleigh, NC 27607

## AVAILABLE Sublease

### Second Floor Suite 210

2,655 SF  
Flexible Lease Term  
Rate Negotiable



**TRIPP BRADSHAW**

919.749.0004 (c)

919.233.9901 (o)

tbradshaw@capitalassociates.com



# THE SUMMIT

4101 Lake Boone Trail | Raleigh, NC 27607

## ABOUT

The Summit is a 120,000 SF five-story, Class A granite office building featuring a two-story granite and marble lobby, polished bronze accents, structured parking, and a mature landscape.

## LOCATION

Convenient West Raleigh location near retail, dining, hotel, and banking opportunities is only minutes from Interstates 40, 440 and US Highway 70 and is easily accessible to downtown, North Raleigh, Cary, RDU International Airport, and Research Triangle Park.

### Walk Score®



62

#### SOMEWHAT WALKABLE

Some errands can be accomplished on foot.



36

#### SOME TRANSIT

A few nearby public transportation options.



58

#### VERY BIKEABLE

Biking is convenient for some trips.



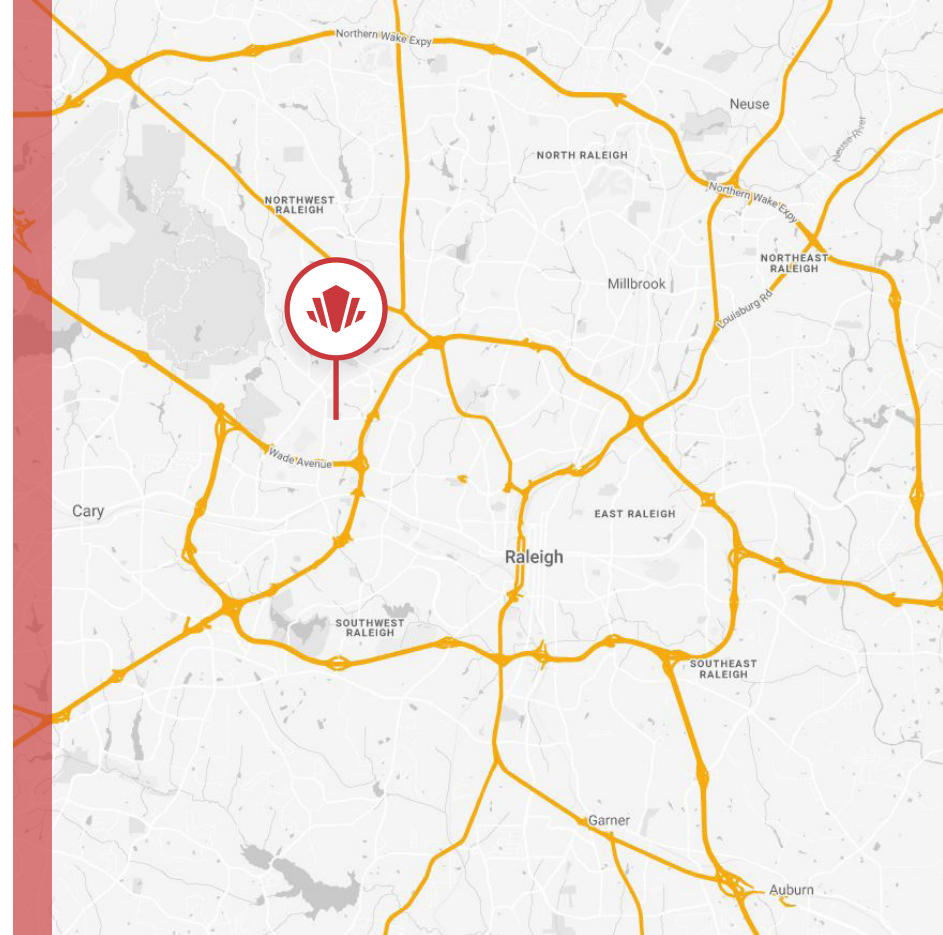
**CAPITAL  
ASSOCIATES.**

#### TRIPP BRADSHAW

919.749.0004 (c)

919.233.9901 (o)

tbradshaw@capitalassociates.com







## POINTS OF INTEREST

### DINING

- Chick-fil-A
- McDonalds
- Starbucks
- Buffalo Brothers Pizza & Wings
- The Oak

- Guasaca Arepa & Salsa Grill
- City Barbeque
- Village Deli & Grill
- Chubby's Tacos
- Randy's Pizza

### CONVENIENCE

- Food Lion
- UNC Health Rex
- Walgreens

### LEISURE

- North Carolina Museum of Art





### A LOBBY THAT CATCHES THE EYE

Elegantly filled with granite and a stunning grand piano.

