

■ Land For Sale

FOREST ST & MAPLE ST

Marengo, IL 60152



SIZE:

37.88 Acres

ADDRESS:

Forest St & Maple St Marengo, IL 60152

ZONING:

R1

SUMMARY:

Embrace an exceptional investment opportunity with this prime land at the SW corner Forest St & Maple St. With 2 access points and level terrain for simplified construction staging, this property is an ideal choice for residential development, perfect for townhomes or single-family development. With sewer and water already on site!

MORKEN
& ASSOCIATES

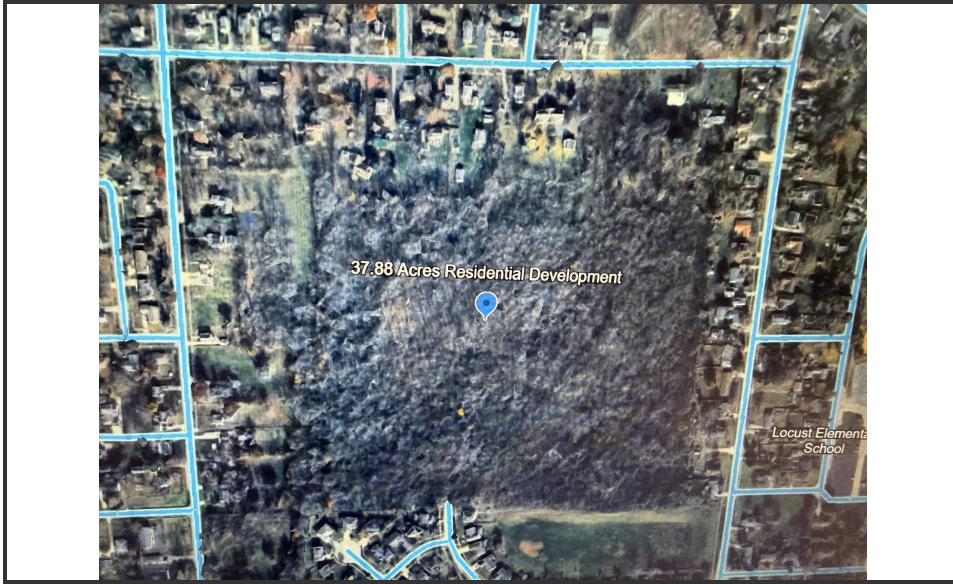
MORKEN & ASSOCIATES

3820 Ridge Pointe Drive, Geneva, IL 60134
630.567.7800 | morkenassociates.com

SCOTT MORKEN

630.567.7804
scottmorken@morkenassociates.com

Executive Summary



OFFERING SUMMARY

Sale Price:	\$1,200,000
Lot Size:	37.88 Acres
Price / Acre:	\$31,679

PROPERTY OVERVIEW

Discover a prime investment opportunity in the thriving town of Marengo, IL. Nestled at the SW intersection of Forest St & Maple St, this desirable location offers a harmonious blend of small-town charm and modern conveniences. Investors will appreciate the area's proximity to key amenities such as retail centers, dining establishments, and recreational facilities. With the scenic beauty of Marengo Ridge Conservation Area and the historic charm of the nearby downtown district, the location provides a compelling draw for residential development. From townhomes to residential homes, the area presents an array of attractive prospects for investors looking to capitalize on the growth and potential of Marengo.

PROPERTY HIGHLIGHTS

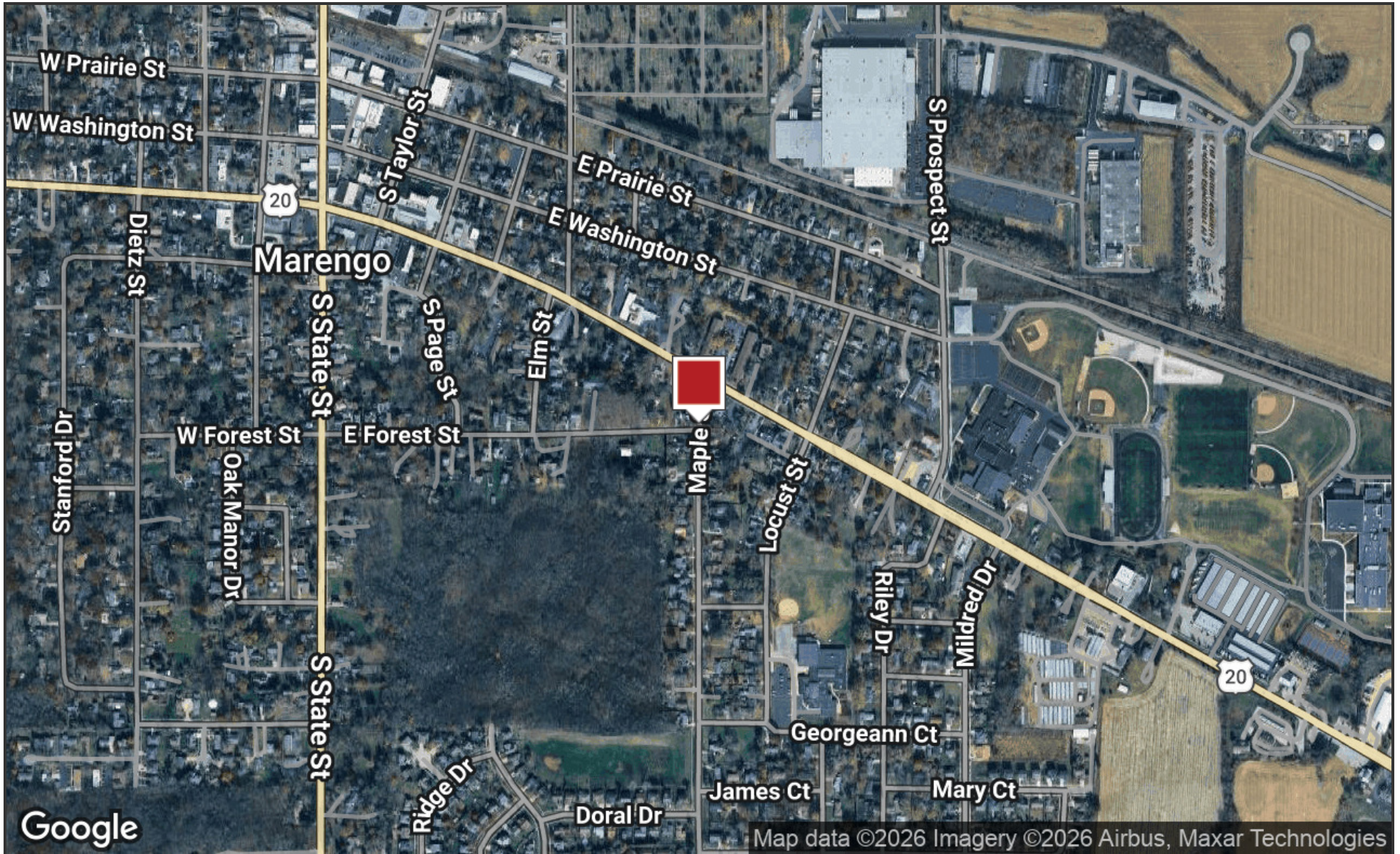
- Development ready site with water and sewer available
- Level terrain simplifies grading and construction staging
- Perfect for townhomes or single family homes
- 2 entry points. One on E Forest St. and one on Spring Drive
- Perfect opportunity to capture future value appreciation

**MORKEN
& ASSOCIATES**

MORKEN & ASSOCIATES
3820 Ridge Pointe Drive, Geneva, IL 60134
630.567.7800 | morkenassociates.com

SCOTT MORKEN
630.567.7804
scottmorken@morkenassociates.com

Location Map

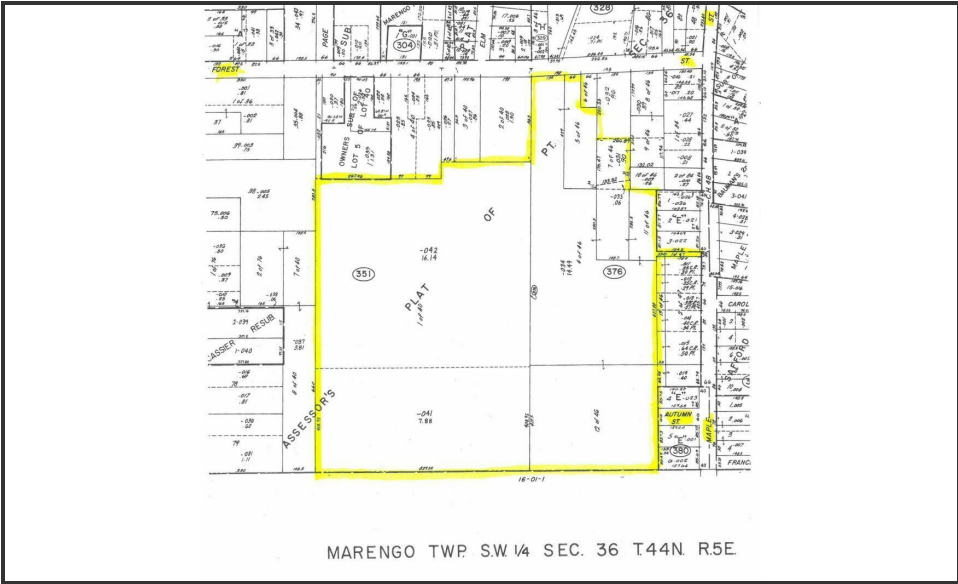
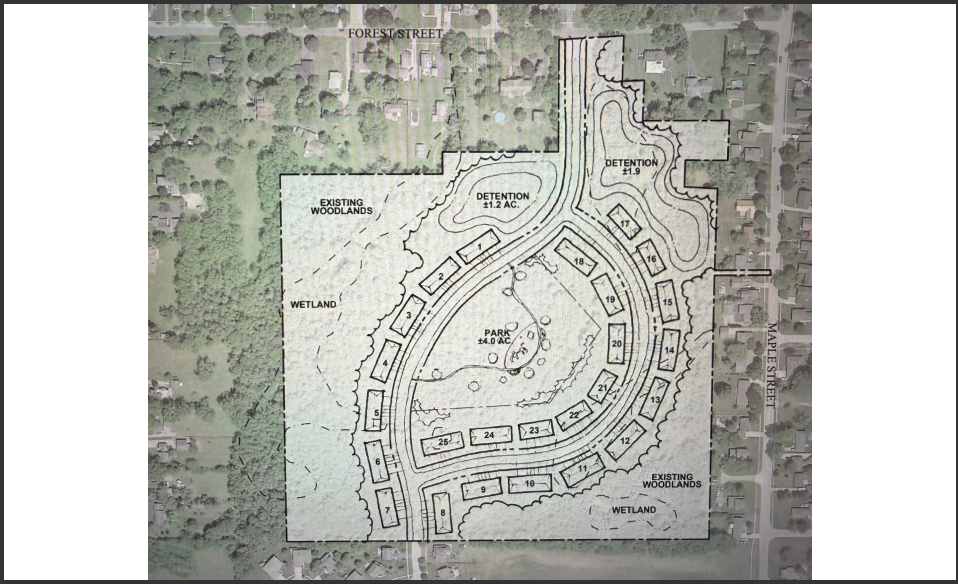
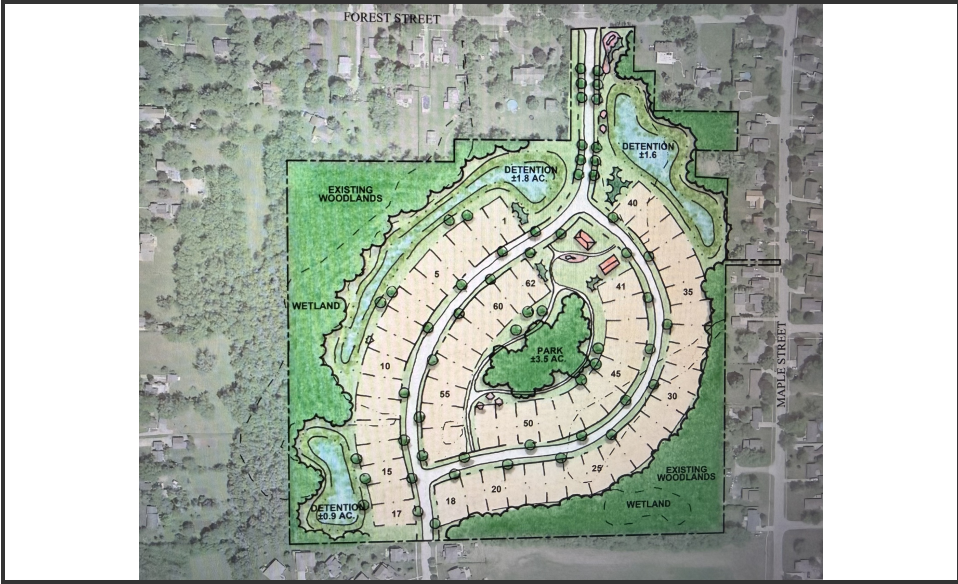


MORKEN
& ASSOCIATES

MORKEN & ASSOCIATES
3820 Ridge Pointe Drive, Geneva, IL 60134
630.567.7800 | morkenassociates.com

SCOTT MORKEN
630.567.7804
scottmorken@morkenassociates.com

Additional Photos



**MORKEN
& ASSOCIATES**

MORKEN & ASSOCIATES
3820 Ridge Pointe Drive, Geneva, IL 60134
630.567.7800 | morkenassociates.com

SCOTT MORKEN
630.567.7804
scottmorken@morkenassociates.com

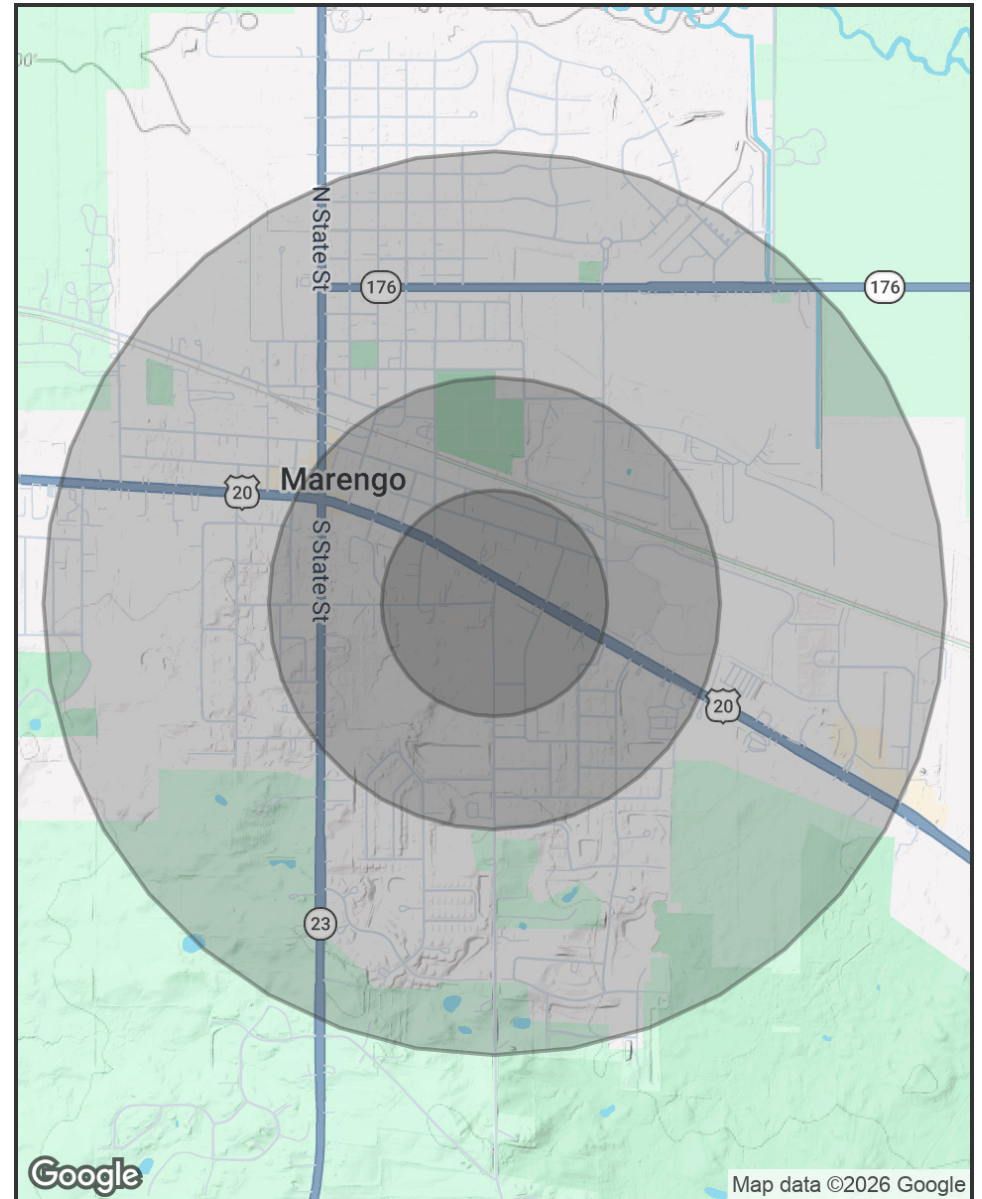
All information herein is from sources deemed reliable but not guaranteed accurate. Subject to errors, omissions, and to change of price and terms, prior lease, all without notice. The Listing agent makes no warranties or representations about the information contained in this form, therefore, it is the Tenant's/Purchaser's responsibility to ascertain its requirements and to determine that specifications listed on this listing form are acceptable to the Tenant/Purchaser.

Demographics Map & Report

POPULATION	0.25 MILES	0.5 MILES	1 MILE
Total Population	129	526	1,963
Average Age	29.7	30.9	32.9
Average Age (Male)	29.7	32.0	35.4
Average Age (Female)	29.8	30.5	31.3

HOUSEHOLDS & INCOME	0.25 MILES	0.5 MILES	1 MILE
Total Households	39	176	717
# of Persons per HH	3.3	3.0	2.7
Average HH Income	\$116,359	\$110,785	\$106,251
Average House Value	\$282,410	\$248,931	\$228,399

2023 American Community Survey (ACS)



**MORKEN
& ASSOCIATES**

MORKEN & ASSOCIATES
3820 Ridge Pointe Drive, Geneva, IL 60134
630.567.7800 | morkenassociates.com

SCOTT MORKEN
630.567.7804
scottmorken@morkenassociates.com