

LINDON TECH CENTER

355 SOUTH 520 WEST | LINDON, UTAH

FOR LEASE



PROPERTY OVERVIEW

Offering close proximity and immediate access to I-15 off the 1600 North exit, Lindon Tech Center is one of the most established office destinations in Silicon Slopes - accommodating a diversity of companies.

With contemporary two-story lobbies, generous glass and a park-like setting, this location benefits from both the striking Mount Timpanogos backdrop and location in the heart of the community.

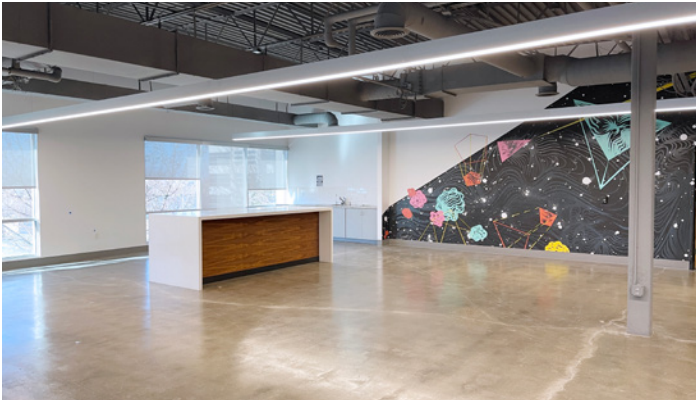


Brandon Fugal
+1 801 947 8300
brandon.fugal@colliers.com

Josh Smith
+1 801 947 8300
josh.smith@colliers.com

Angela Kroneberger
+1 801 947 8300
angela.kroneberger@colliers.com

LINDON TECH CENTER



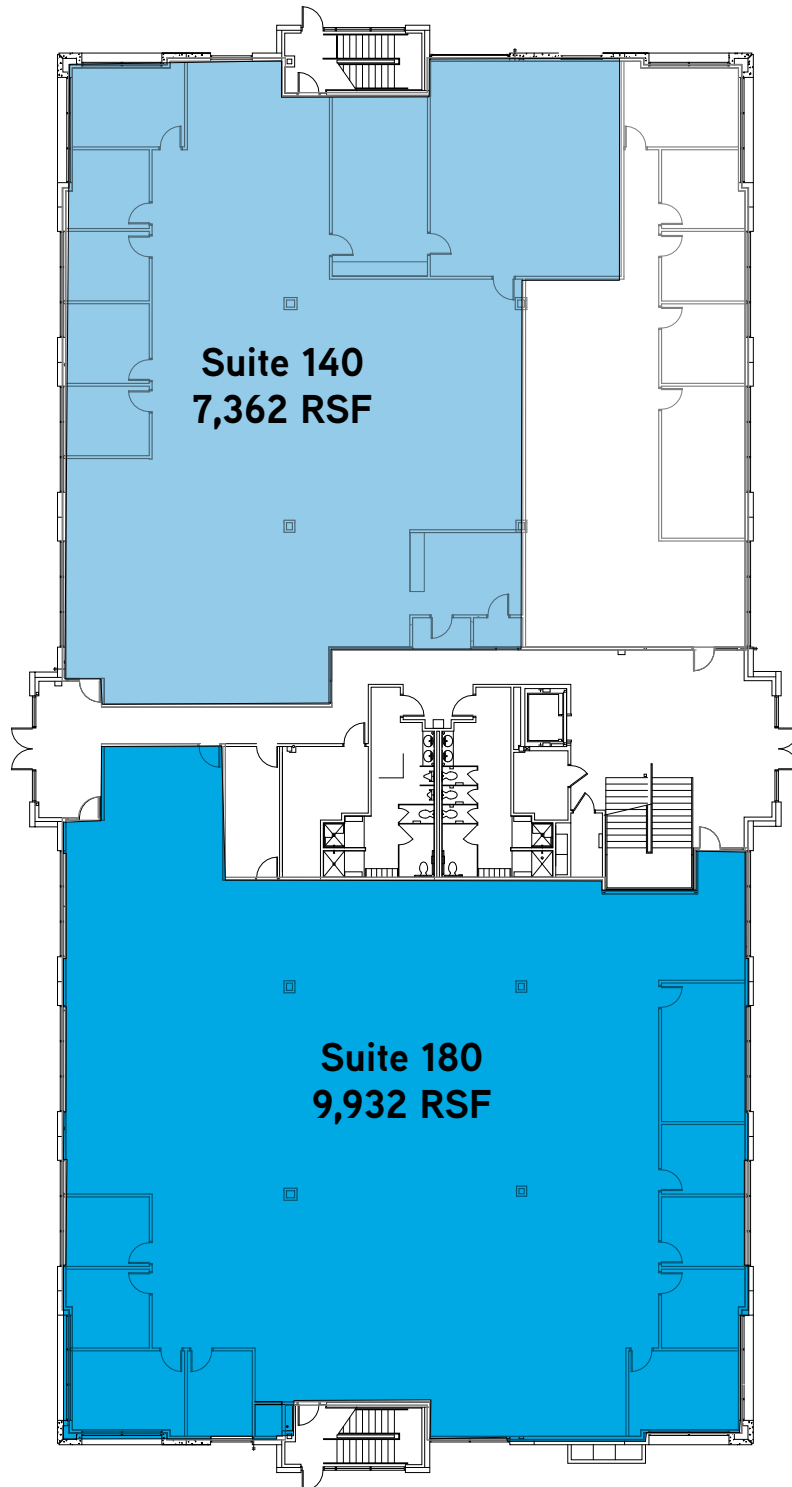
PROPERTY HIGHLIGHTS:

- Available space: 7,362 - 17,294 Sq. Ft.
- Lease rate starting at \$18.50 Per Sq. Ft. / Full Service
- Silicon Slopes Location
- Excellent I-15 Access
- Close Proximity to BYU and UVU Demographic
- Building Signage Available
- Multiple Fiber Optic Provider Connectivity
- Highly Competitive Lease Rates
- Negotiable Improvements
- Abundant Parking
- 2-Story Lobby Entries & Common Areas

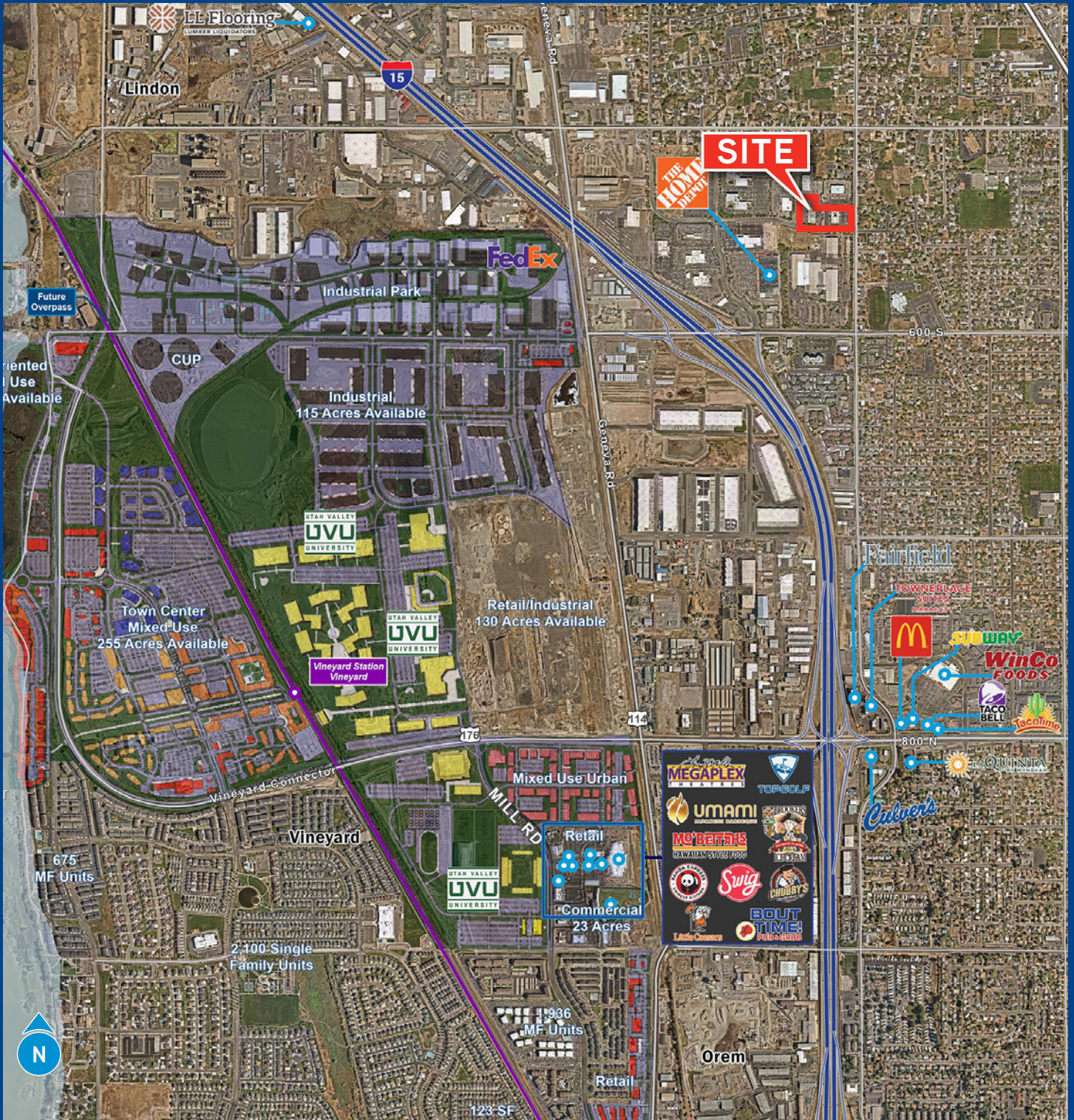


LINDON TECH CENTER

1ST FLOOR



AMENITIES



Brandon Fugal
 +1 801 947 8300
 brandon.fugal@colliers.com

Josh Smith
 +1 801 947 8300
 josh.smith@colliers.com

Angela Kroneberger
 +1 801 947 8300
 angela.kroneberger@colliers.com