






FOR LEASE —
608 Towne Park Loop
Rincon, GA 31326



PROPERTY OVERVIEW

New construction is coming to thriving Rincon, GA, and it is available now. The +/- 8,174 sq ft center has three units left for lease. The remaining units offer between 1,340 and 1,474 sq ft of space and can be combined for up to 4,154 sq ft. This location is perfect for several businesses, including retail, restaurant, service-based, and medical uses. Conveniently located in Effingham County, this property is in the heart of Rincon, GA, with easy access to Highway 21 and Interstate 95.

2023 AREA DEMOGRAPHICS		2 MILES	5 MILES	10 MILES
	POPULATION	13,609	29,169	87,252
	AVG. HH INCOME	\$79.7K	\$91.9K	\$93.8K
	NO. OF HOUSEHOLDS	4,872	10,413	31,488

DAICOMMERCIAL.COM

DAI COMMERCIAL REALTY
KATIE CHANCY - MANAGING BROKER

K.CHANCY@DAICOMMERCIAL.COM
O: (912) 944-4410 | M: (912) 308-3111

PROPERTY HIGHLIGHTS



+/- \$30 PSF NNN

MIN DIVISIBLE +/- 1,340 SQ FT

MAX CONTIGUOUS +/- 4,154 SQ FT



+/- 1,340 SQ FT FOR UNIT 2

+/- 1,474 SQ FT FOR UNIT 3

+/- 1,340 SQ FT FOR UNIT 4



RETAIL, RESTAURANT, OFFICE, MEDICAL

UNITS AVAILABLE: 2, 3 & 4

AVAILABLE NOW



34 PARKING SPACES AVAILABLE



CENTRALLY LOCATED IN RINCON JUST OFF OF HIGHWAY 21



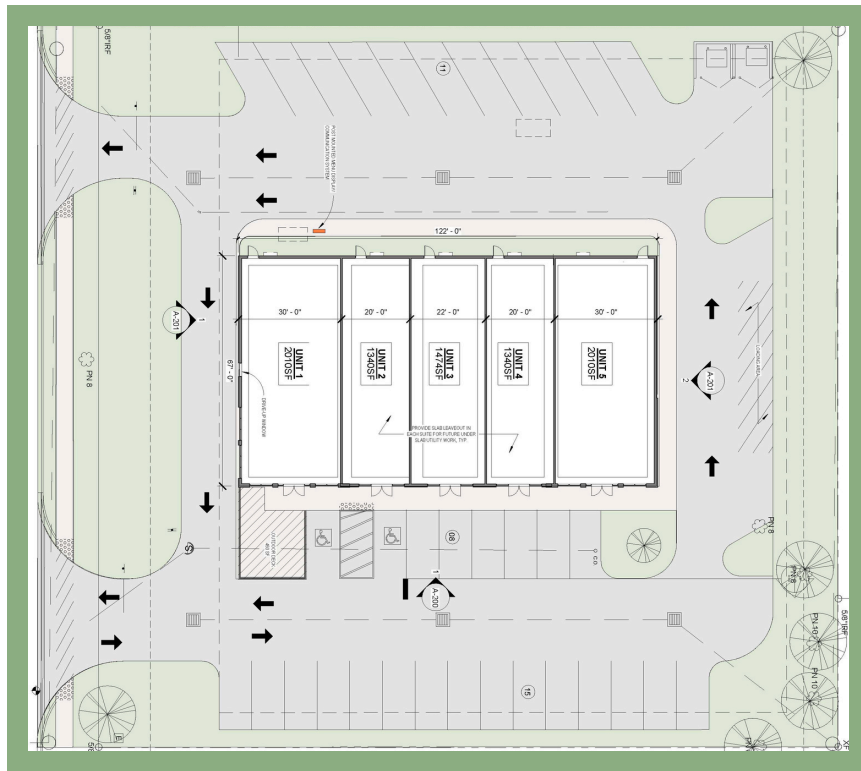
LOCATION MAP



PROPERTY RENDERINGS



PARKING EXHIBIT- 34 PARKING SPACES



SITE PLAN

