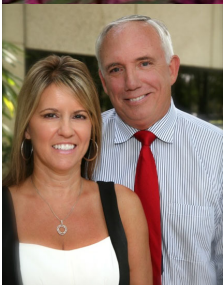


Westhall Executive Center

Maitland Center

2700 Westhall Lane

Maitland, Florida 32751



COMMERCIAL REAL ESTATE

Westhall Executive Center

Key Features

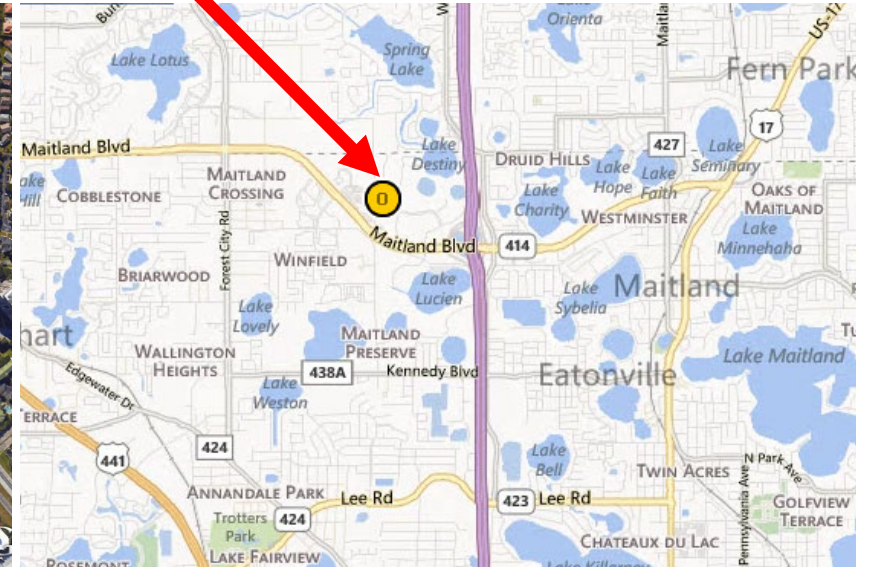
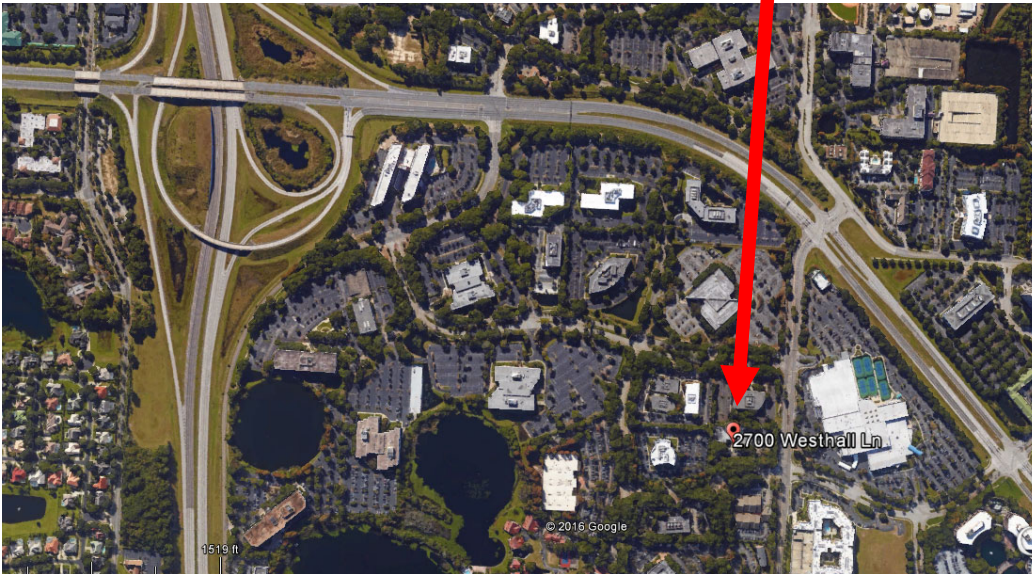
- **Central Maitland Center Location**
 - Easy Access to I-4, SR 414 (Maitland Blvd.), SR 434
- **Nearby Hotels and Restaurants and Stores**
- **Building Features Include:**
 - Common Conference Room
 - Security System with 24/7 Magnetic Control Access
 - Video Security Camera System
 - Energy Efficient Building Control System
 - 24/7 HVAC System Availability
 - Tenant Controlled Thermostat
 - After-Hour HVAC Override @ \$15.00 Hour
- **Multiple Internet Service Providers - Competitive Rates**
- **On-Site Ownership and Management - Deal with the owner directly rather than a third party manager**
- **Park-Like Setting with Picnic Tables and Benches**

Atkins Commercial Real Estate LLC

2700 Westhall Lane, Suite 120 Maitland, Florida 32751

Westhall Executive Center

Location Maps



Westhall Executive Center

Common Area Conference Room—1st Floor East Wing



Bob Atkins

Atkins Commercial Real Estate LLC

2700 Westhall Lane, Suite 120

Maitland, Florida 32751

O: 407-875-8040 M: 407-257-5499 Email: bob@Atkinacre.com



COMMERCIAL REAL ESTATE

Westhall Executive Center

First Floor

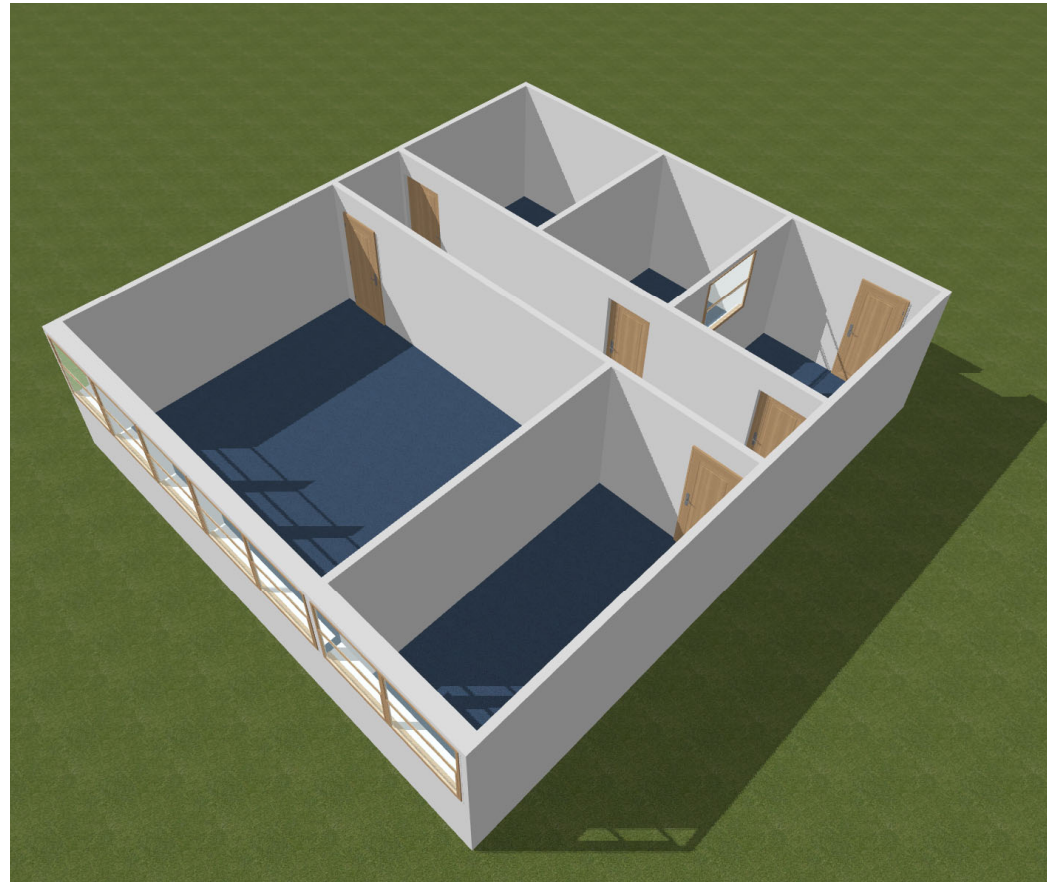
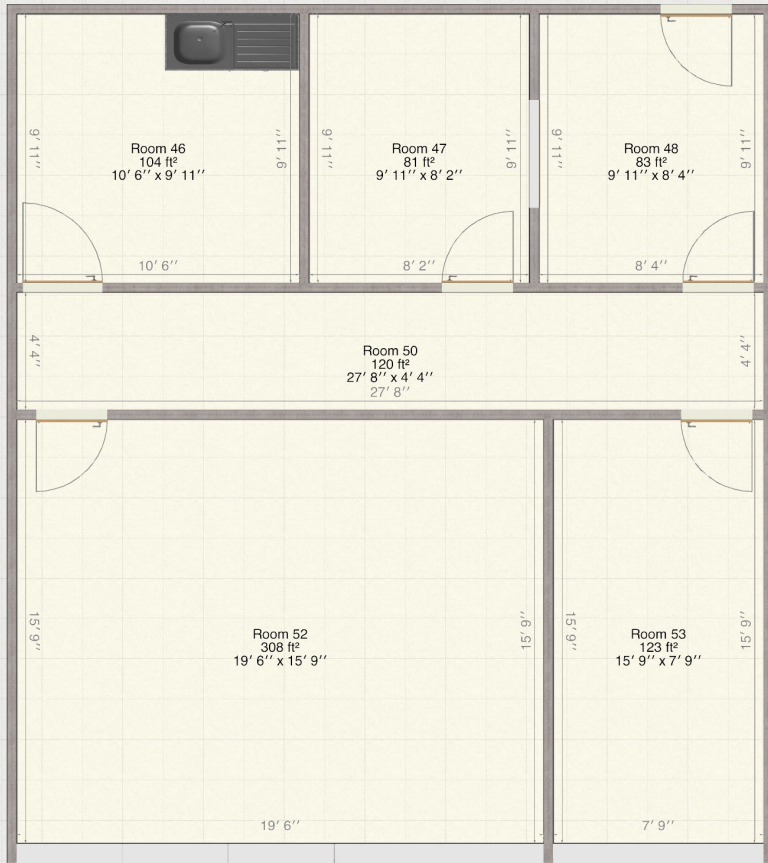
Available Suites are White



Westhall Executive Center

Suite 133

RSF 1,098



Westhall Executive Center

Suite 133

RSF 1,098

