

FOR LEASE | FOR GROUND LEASE

# ±2.32 ACRES AVAILABLE

SW 328th Street & SE 28th Avenue, Homestead, FL 33033

JOIN FUTURE NATIONAL  
FUEL/CONVENIENCE OPERATOR



\*PROPOSED RENDERING

LOCATED IN ONE OF THE FASTEST GROWING MARKETS IN SOUTH FLORIDA

EXCLUSIVE RETAIL LEASING

## KATZ & ASSOCIATES

RETAIL REAL ESTATE ADVISORS

**Karen Maerovitz**

SENIOR DIRECTOR

karenmaerovitz@katzretail.com

(786) 210-8837

**Daniel Solomon, CCIM**

PRINCIPAL

danielsolomon@katzretail.com

(954) 401-2181



# Property Overview

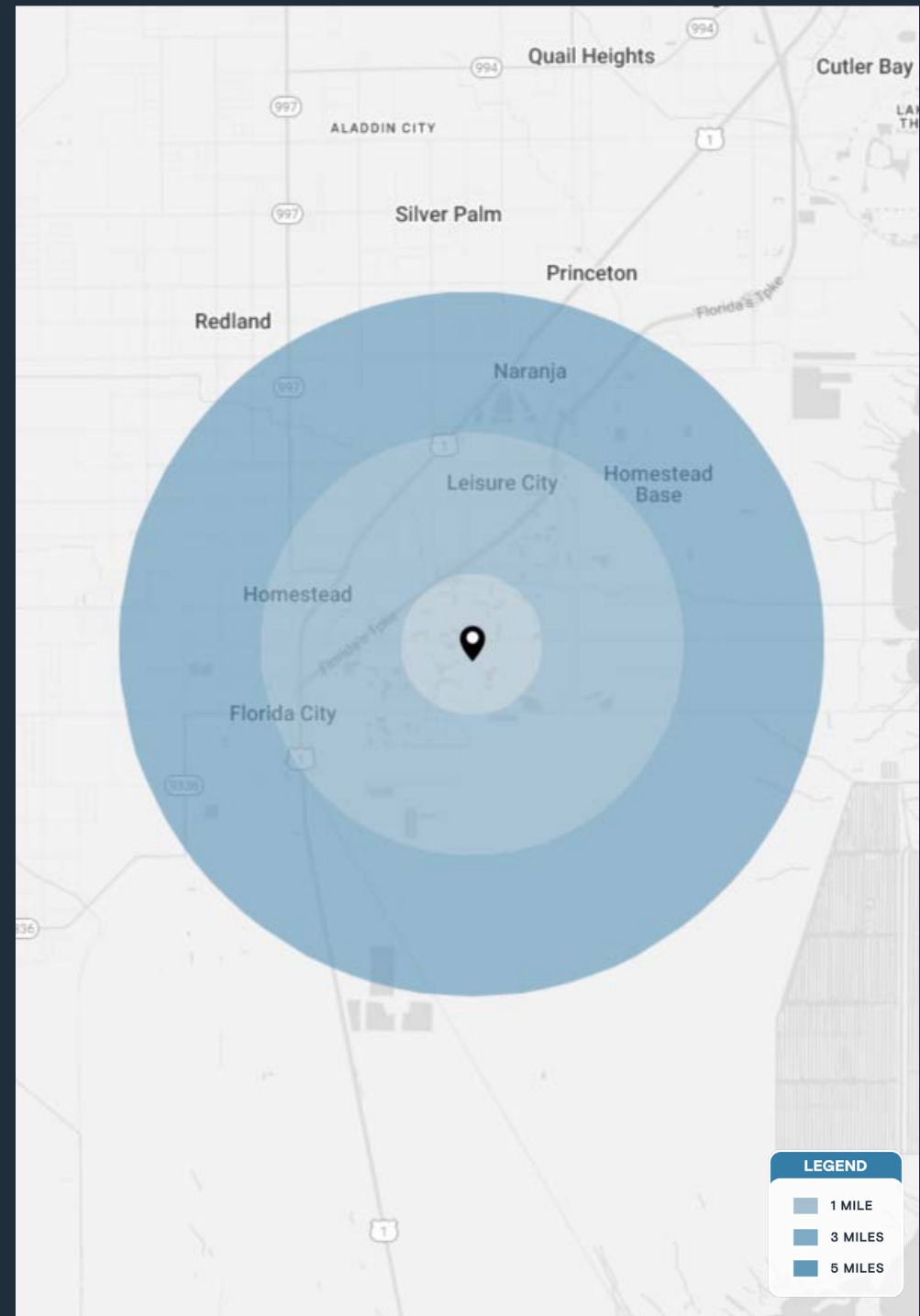
## HIGHLIGHTS

- 2.32 Acres for lease or ground lease
- 2 potential drive-through sites available up to 2,400 SF each
- Seeking quick service restaurants, retail, medical, and daycare uses
- Located across from the new Homestead Commerce Park with approximately 282,000 SF
- Easy access to Florida's Turnpike from SE 28th Ave/SW 152nd Ave, only 1 mile away
- \$122 million Turnpike extension is underway. To be finished mid-2028
- Planned Lucy Street/SW 328th Street interchange on/off ramps, only 1.5 mi West of site
- Lennar housing project West and South of the property will create 1,300 homes

## DEMOGRAPHICS

	1 MILE	3 MILES	5 MILES
POPULATION	19,245	102,250	183,382
HOUSEHOLDS	6,020	31,705	55,480
EMPLOYEES	14,787	79,749	142,745
AVERAGE HH INCOME	\$105,373	\$79,973	\$80,155

	5 MINUTES	10 MINUTES	15 MINUTES
POPULATION	57,134	175,974	234,707
HOUSEHOLDS	17,907	53,661	69,977
EMPLOYEES	44,491	136,700	183,351
AVERAGE HH INCOME	\$89,188	\$78,574	\$85,597

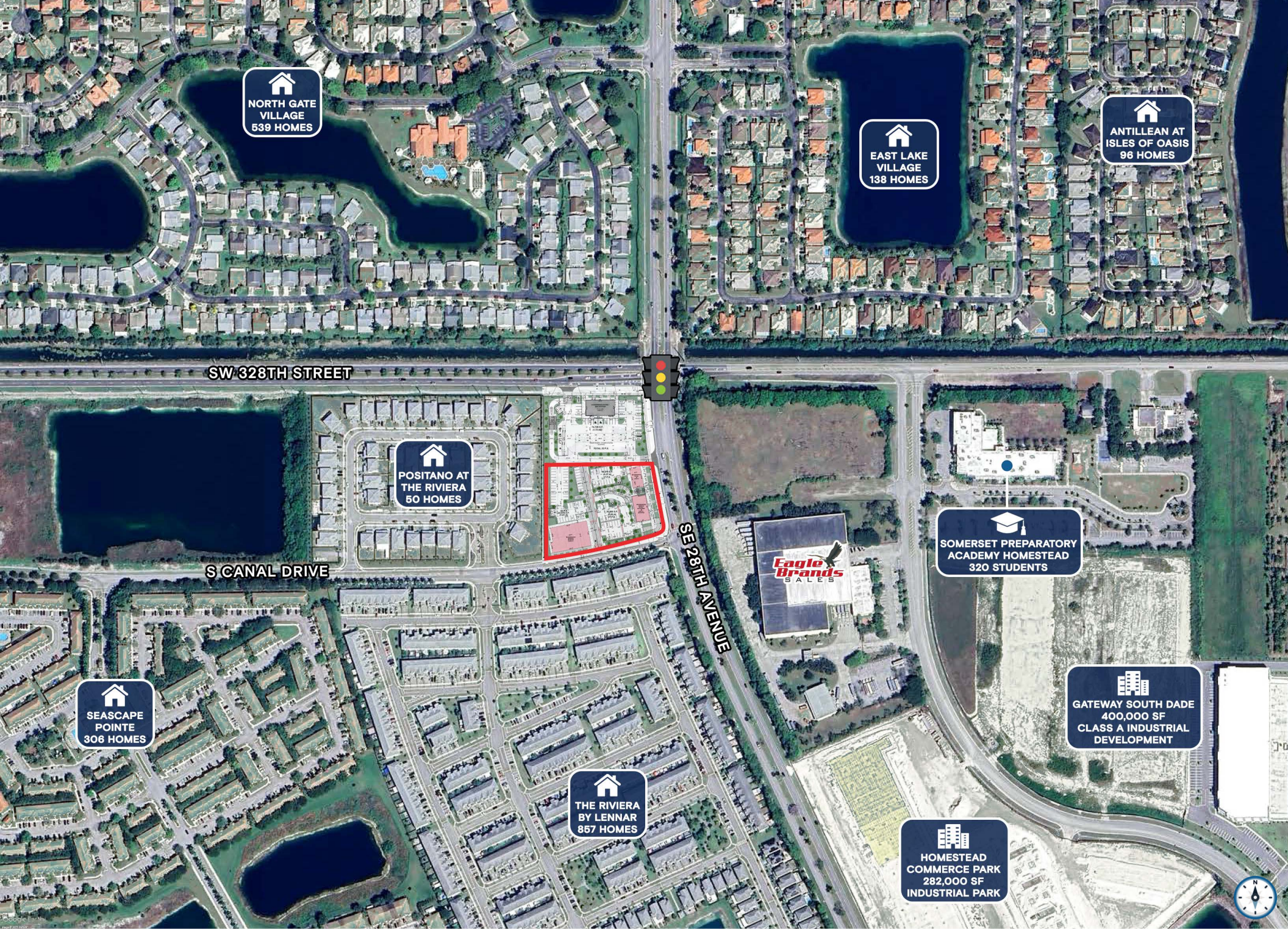












  
NORTH GATE  
VILLAGE  
539 HOMES

  
EAST LAKE  
VILLAGE  
138 HOMES

  
ANTILLEAN AT  
ISLES OF OASIS  
96 HOMES

SW 328TH STREET

  
POSITANO AT  
THE RIVIERA  
50 HOMES

S CANAL DRIVE

  
SEASCAPE  
POINTE  
306 HOMES

SE 28TH AVENUE

  
THE RIVIERA  
BY LENNAR  
857 HOMES

  
Eagle  
Brands  
SALES

  
SOMERSET PREPARATORY  
ACADEMY HOMESTEAD  
320 STUDENTS

  
GATEWAY SOUTH DADE  
400,000 SF  
CLASS A INDUSTRIAL  
DEVELOPMENT

  
HOMESTEAD  
COMMERCE PARK  
282,000 SF  
INDUSTRIAL PARK











# Contact Brokers

**Daniel Solomon, CCIM**  
PRINCIPAL  
[danielsolomon@katzretail.com](mailto:danielsolomon@katzretail.com)  
(954) 401-2181

**Karen Maerovitz**  
SENIOR DIRECTOR  
[karenmaerovitz@katzretail.com](mailto:karenmaerovitz@katzretail.com)  
(786) 210-8837



**KATZ & ASSOCIATES**  
RETAIL REAL ESTATE ADVISORS

[katzretail.com](http://katzretail.com)

The information herein was obtained from third parties and has not been independently verified by Katz & Associates. Any and all interested parties should have their choice of experts inspect the property and verify all information. Katz & Associates makes no warranties or guarantees as to the information given to any prospective buyer or tenant. REV: 09/16/25