

FOR LEASE

18,000 – 128,459 SF AVAILABLE
1401 GREENGRASS
INNER LOOP DISTRIBUTION



DOWNTOWN HOUSTON

HOUSTON GALLERIA



18,000 - 128,459 SF
AVAILABLE

FOR LEASE

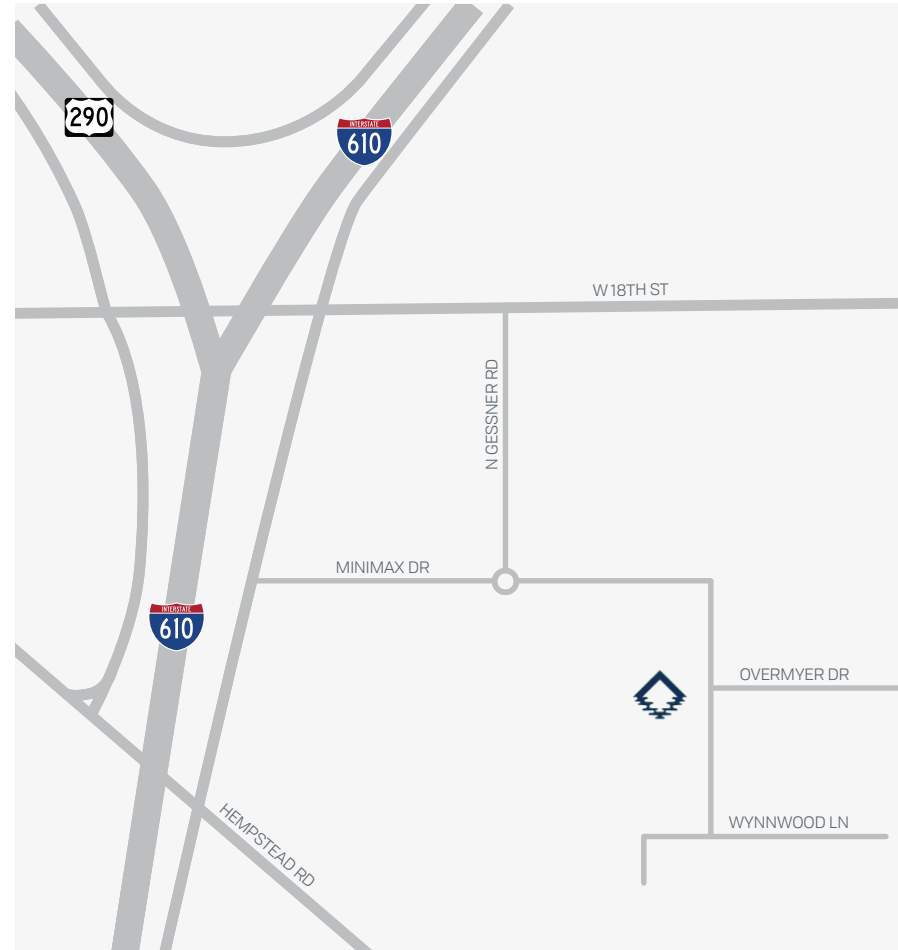
18,000 – 128,459 SF AVAILABLE
1401 GREENGRASS
INNER LOOP DISTRIBUTION



BUILDING INFORMATION

- **128,459 SF AVAILABLE**
- **23,145 SF OFFICE AREA**
- **18' CLEAR HEIGHT**
- **220' SHARED TRUCK COURT**
- **22 DOCK-HIGH LOADING DOORS**
- **2 LOADING RAMPS**
- **EASY ACCESS TO 610, AND I-10**
- **AMPLE EMPLOYEE PARKING**
- **OUTSIDE STORAGE AVAILABLE**
- **RECENTLY MADE READY**

1401 GREENGRASS
128,469 SF AVAILABLE



MARKETED BY:

JEREMY LUMBRERAS

713.300.0322
JLUMBRERAS@STREAMREALTY.COM

BOONE SMITH

713.300.0267
BOONE.SMITH@STREAMREALTY.COM



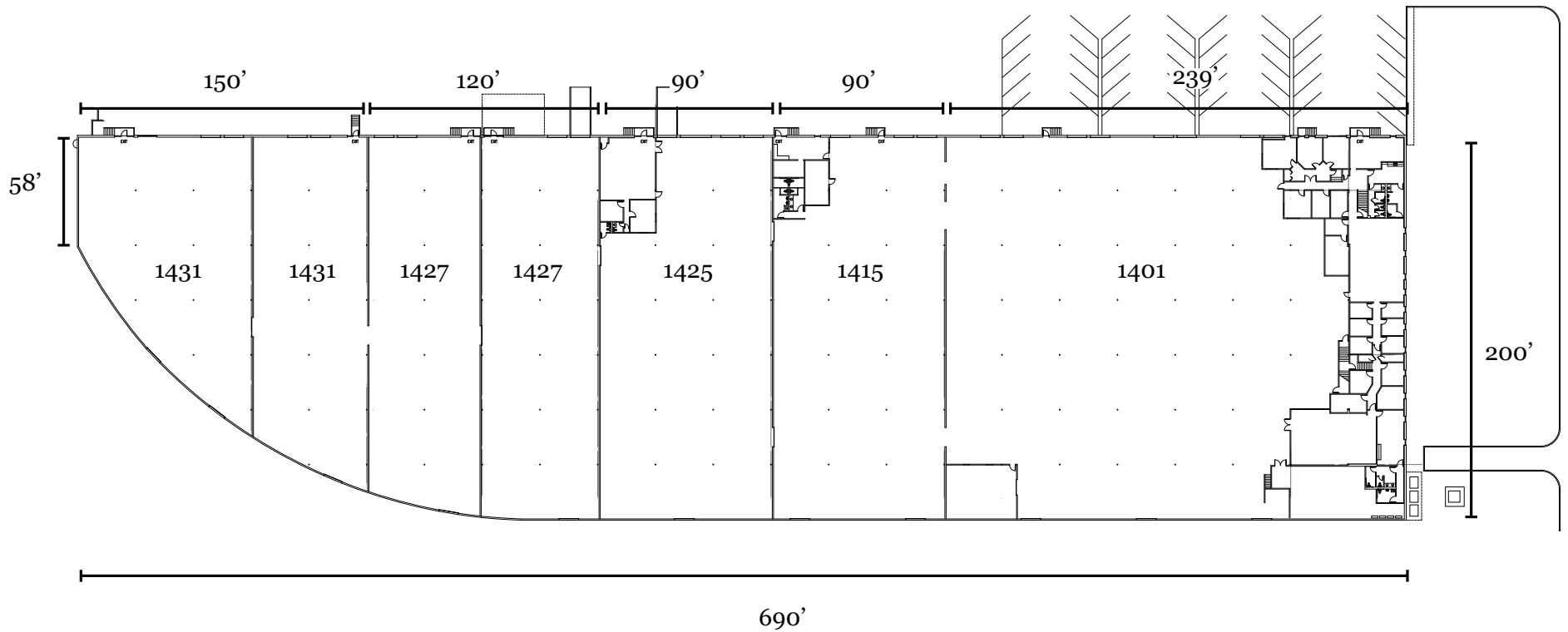
FOR LEASE

18,000 – 128,459 SF AVAILABLE
1401 GREENGRASS
INNER LOOP DISTRIBUTION



FLOOR PLAN | FULL BUILDING

SUITE 1401-1431 | 128,460 SF



FOR LEASE

18,000 – 128,459 SF AVAILABLE
1401 GREENGRASS
INNER LOOP DISTRIBUTION

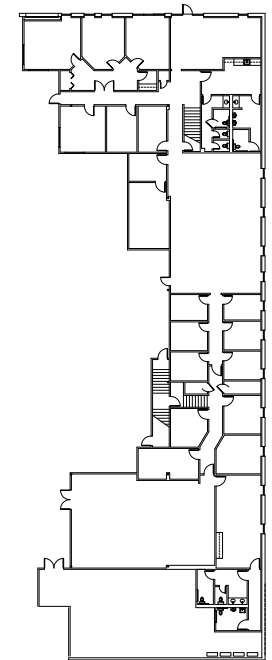
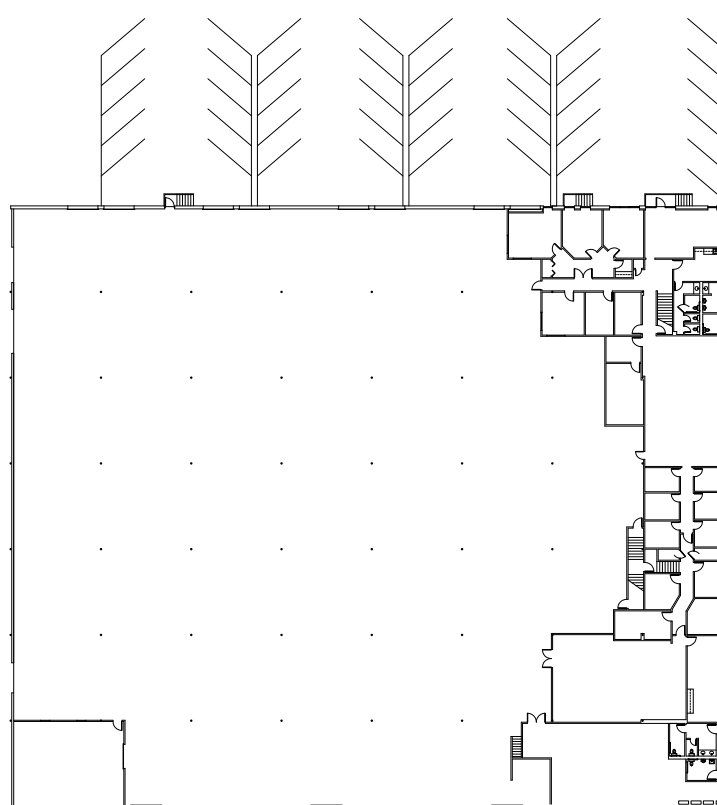
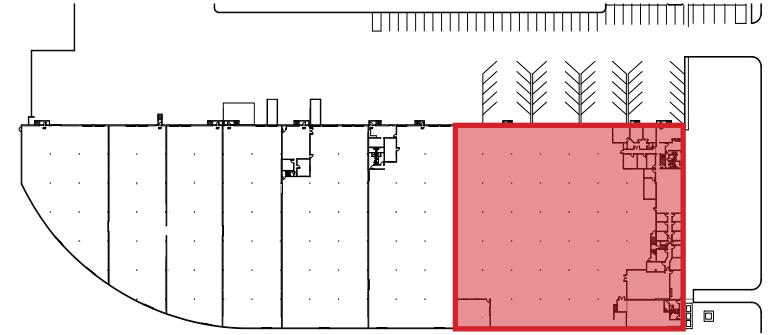


FLOOR PLAN | OPTION ONE

SUITE 1401 | 56,868 SF

BUILDING INFORMATION

- 56,868 SF AVAILABLE
- 8,688 SF OFFICE AREA
- 7,014 SF MEZZIANINE AREA
- 18' CLEAR HEIGHT
- 220' SHARED TRUCK COURT
- 7 DOCK HIGH DOORS
- EASY ACCESS TO 610, AND I-10
- AMPLE EMPLOYEE PARKING
- OUTSIDE STORAGE AVAILABLE
- RECENTLY MADE READY



MEZZIANINE FLOOR PLAN

FOR LEASE

18,000 – 128,459 SF AVAILABLE
1401 GREENGRASS
INNER LOOP DISTRIBUTION

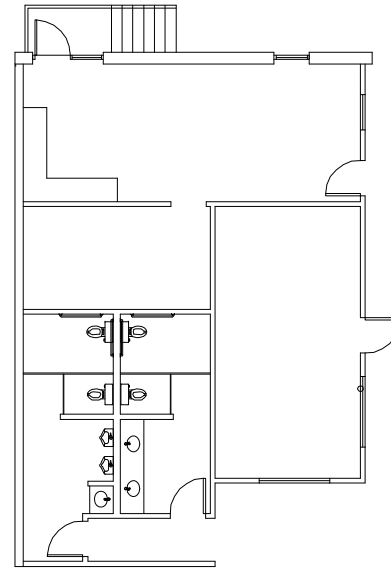
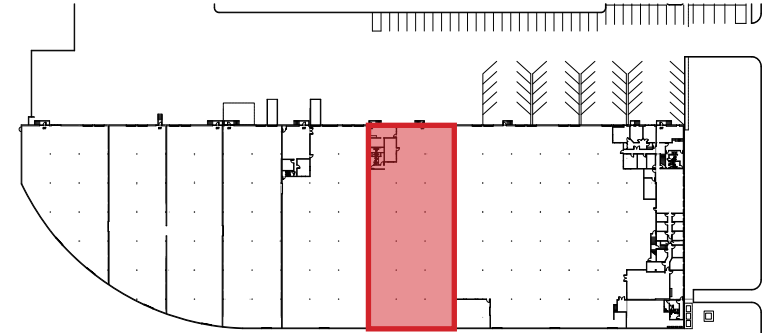


FLOOR PLAN | OPTION TWO

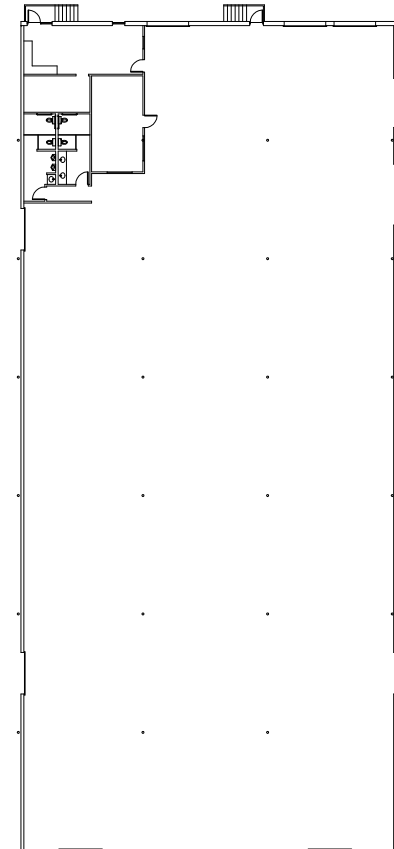
SUITE 1415 | 18,000 SF

BUILDING INFORMATION

- 18,000 SF AVAILABLE
- 1,208 SF OFFICE AREA
- 18' CLEAR HEIGHT
- 220' SHARED TRUCK COURT
- 3 DOCK HIGH DOORS
- EASY ACCESS TO 610, AND I-10
- AMPLE EMPLOYEE PARKING
- OUTSIDE STORAGE AVAILABLE
- RECENTLY MADE READY



OFFICE FLOOR PLAN



FOR LEASE

18,000 – 128,459 SF AVAILABLE
1401 GREENGRASS
INNER LOOP DISTRIBUTION

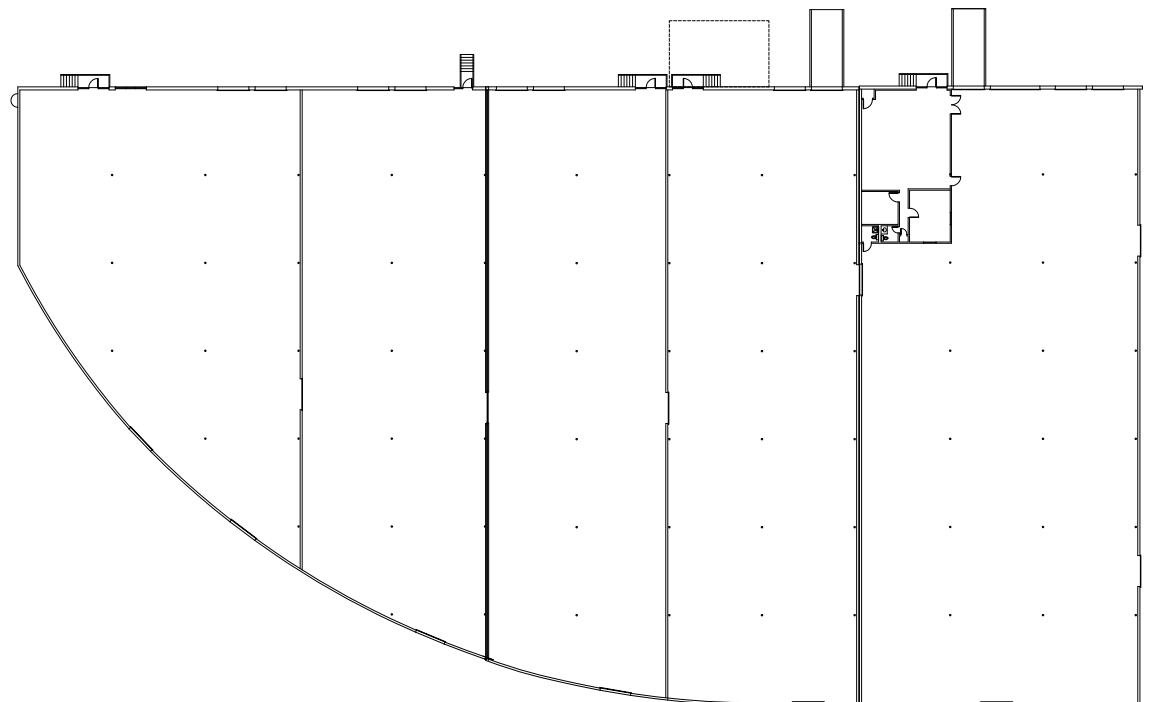
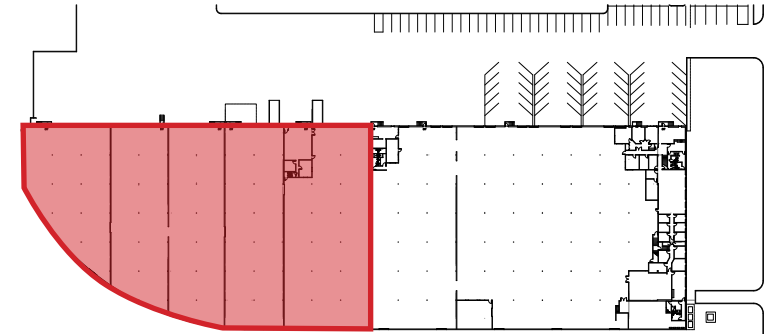


FLOOR PLAN | OPTION THREE

SUITE 1427-1431 | 62,591 SF

BUILDING INFORMATION

- 62,591 SF AVAILABLE
- 1,512 SF OFFICE AREA
- 18' CLEAR HEIGHT
- 220' SHARED TRUCK COURT
- 10 DOCK HIGH DOORS
- EASY ACCESS TO 610, AND I-10
- AMPLE EMPLOYEE PARKING
- OUTSIDE STORAGE AVAILABLE
- RECENTLY MADE READY



FOR LEASE

18,000 – 128,459 SF AVAILABLE
1401 GREENGRASS
INNER LOOP DISTRIBUTION

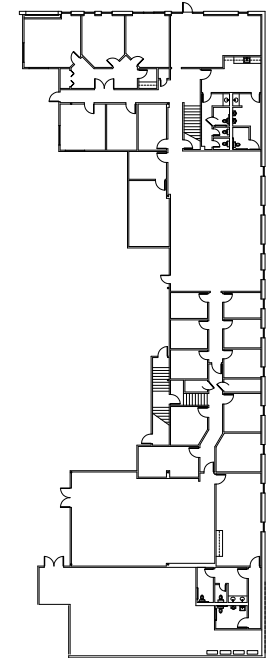
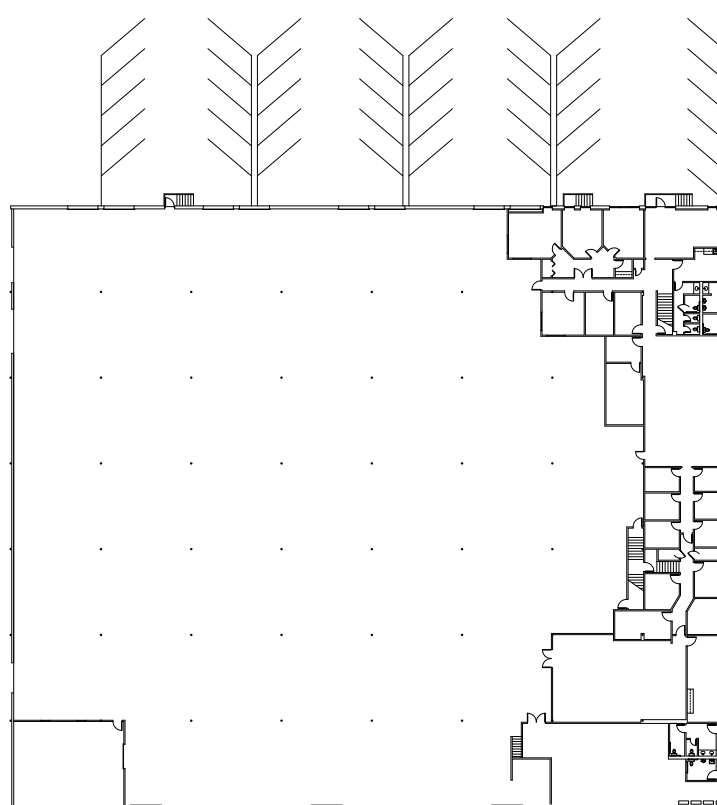
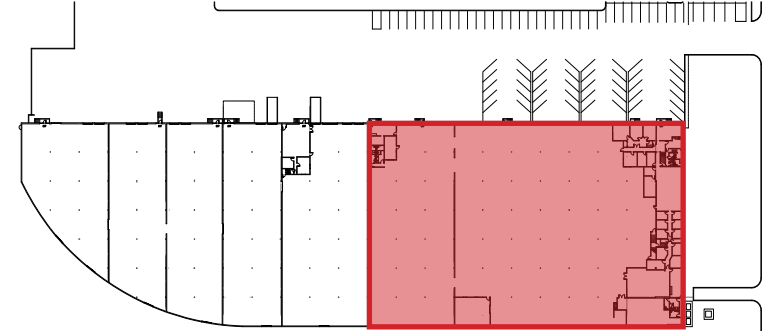


FLOOR PLAN | OPTION FOUR

SUITE 1401-1415 | 72,882 SF

BUILDING INFORMATION

- 72,882 SF AVAILABLE
- 9,896 SF OFFICE AREA
- 7,014 SF MEZZIANINE AREA
- 18' CLEAR HEIGHT
- 220' SHARED TRUCK COURT
- 7 DOCK HIGH DOORS
- EASY ACCESS TO 610, AND I-10
- AMPLE EMPLOYEE PARKING
- OUTSIDE STORAGE AVAILABLE
- RECENTLY MADE READY



MEZZIANINE FLOOR PLAN

FOR LEASE

18,000 – 128,459 SF AVAILABLE
1401 GREENGRASS
INNER LOOP DISTRIBUTION



FOR LEASE

18,000 – 128,459 SF AVAILABLE
1401 GREENGRASS
INNER LOOP DISTRIBUTION

An aerial photograph of a large industrial complex with multiple long, rectangular buildings. A red outline highlights a specific section of the building on the left side. The surrounding area includes parking lots, green spaces, and other industrial structures under a blue sky with scattered clouds.

18,000 - 128,459 SF
AVAILABLE

FOR LEASE

18,000 – 128,459 SF AVAILABLE
1401 GREENGRASS
INNER LOOP DISTRIBUTION



SUITE 1401 - 47,868 SF

SUITE 1415 - 18,000 SF

SUITE 1425 - 18,000 SF

SUITE 1427 - 23,626 SF

SUITE 1431 - 20,966 SF