

M E R I D I A N

147 S. CHERRY STREET, SUITE 200 | WINSTON-SALEM, NC 27101 | P 336.722.1986 | F 336.723.3173 | MERIDIANREALTY.COM

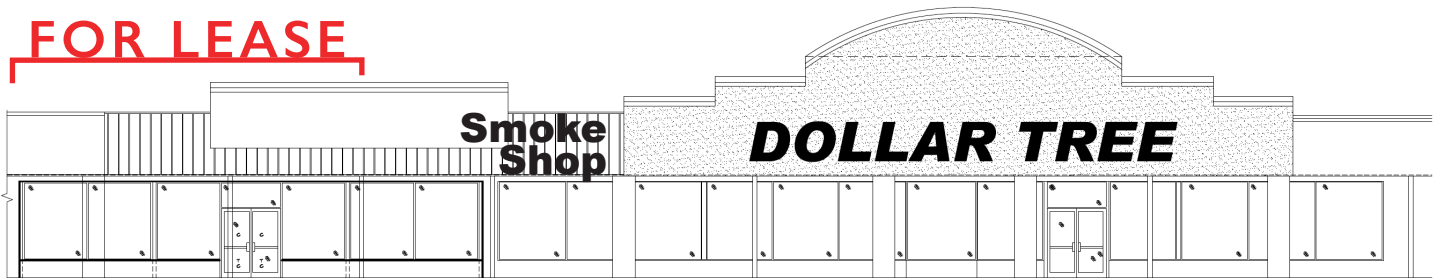
Retail Office

# King Shopping Center

607 S. Main Street, Unit F, King, NC 27021



**FOR LEASE**



FRONT ELEVATION

SCALE: 1/8" = 1'-0"

Prime in-line unit in King's most visible shopping center. Easy ingress & egress with stoplight access from Jefferson Church Road. Recently renovated facade and parking area. Great traffic from Dollar tree.

DEMOGRAPHICS	1mi	3mi	5mi
POPULATION	2,210	13,160	27,140
HOUSEHOLDS	1,048	5,772	11,609
HOUSEHOLD INCOME	\$72,844	\$86,530	\$90,095

**FOR LEASE: \$ 16 PSF NNN**

For more information:

**Jesse H. Jarrell, CCIM**

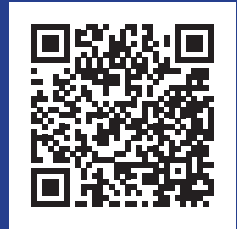
[jjarrell@meridianrealty.com](mailto:jjarrell@meridianrealty.com)

336.480.2324

WWW.MERIDIANREALTY.COM



AERIAL FROM OVER CENTER



Click or Scan for  
Virtual Tour

- 2,000± SF available for lease
- Renovated in 2019
- Great location on King's major throughfare
- Zoned B2
- For Lease: \$16 PSF NNN



No warranty or representation (express or implied) is made as to the accuracy or completeness of the information set forth herein. All information is submitted subject to errors, omissions, change of price, prior lease or sale, and withdrawal without notice. All marketing material produced by the Meridian Realty Group is proprietary. Any reproduction is expressly prohibited.



THE MERIDIAN REALTY GROUP | 147 S. CHERRY STREET, SUITE 200 | WINSTON-SALEM, NC 27101

P 336.722.1986 | F 336.723.3173

WWW.MERIDIANREALTY.COM