



91-220 and 91-240 Hanua Street

KAPOLEI, HI 96707

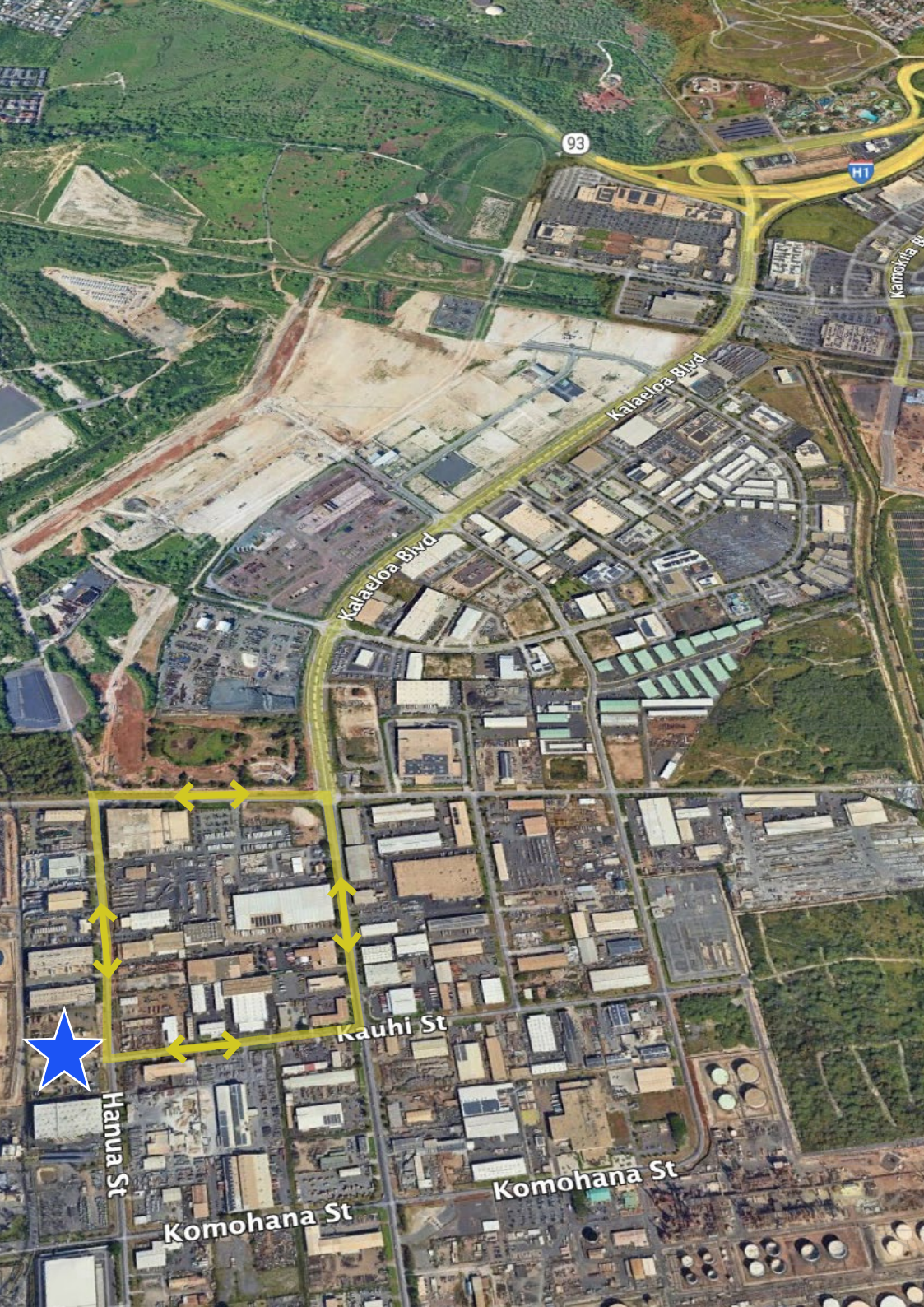
INDUSTRIAL FOR SALE OR LEASE

ABOUT THE PROPERTY

Opportunity to purchase or lease fee simple I-2 zoned parcel in Campbell Industrial Park. The available parcel is leveled and fenced. Used by Matson for the past 20 years for secure container storage, this parcel is ready for an owner user or lessee to occupy or build. Located on Hanua Street with multiple access ways to Kalaeloa Boulevard and H1 Freeway.

PROPERTY INFORMATION

TMK No.	(1) 9-1-14: 19 & 20
Zoning	I-2
Lot Size	91-220 Hanua St: 4.203 Acres
Sale Price	91-220 Hanua St: \$11,900,000 (\$65 PSF)
Tenure	Fee Simple
Base Rent	\$0.40 PSF/Mo.
CAM & Term	TBD





91-220 Hanua St
(Available)

91-240 Hanua St
(Sold)

William Froelich (B), JD, SIOR, CCIM*

Vice Chair

Industrial Services Division

Lic# RB-21658

808 523 9711

william.froelich@colliers.com

*FFFM LLC, Exclusively contracted to Colliers International HI, LLC

220 S. King Street, Suite 1800

Honolulu, Hawaii 96813

808 524 2666

colliers.com



This document/email has been prepared by Colliers for advertising and general information only. Colliers makes no guarantees, representations or warranties of any kind, expressed or implied, regarding the information including, but not limited to, warranties of content, accuracy and reliability. Any interested party should undertake their own inquiries as to the accuracy of the information. Colliers excludes unequivocally all inferred or implied terms, conditions and warranties arising out of this document and excludes all liability for loss and damages arising there from. This publication is the copyrighted property of Colliers and /or its licensor(s). © 2025. All rights reserved. This communication is not intended to cause or induce breach of an existing listing agreement.