



# 1000 Lively (Chase) Blvd

Elk Grove Village, Illinois 60007

[www.gullo.com](http://www.gullo.com)  
[info@gullo.com](mailto:info@gullo.com)

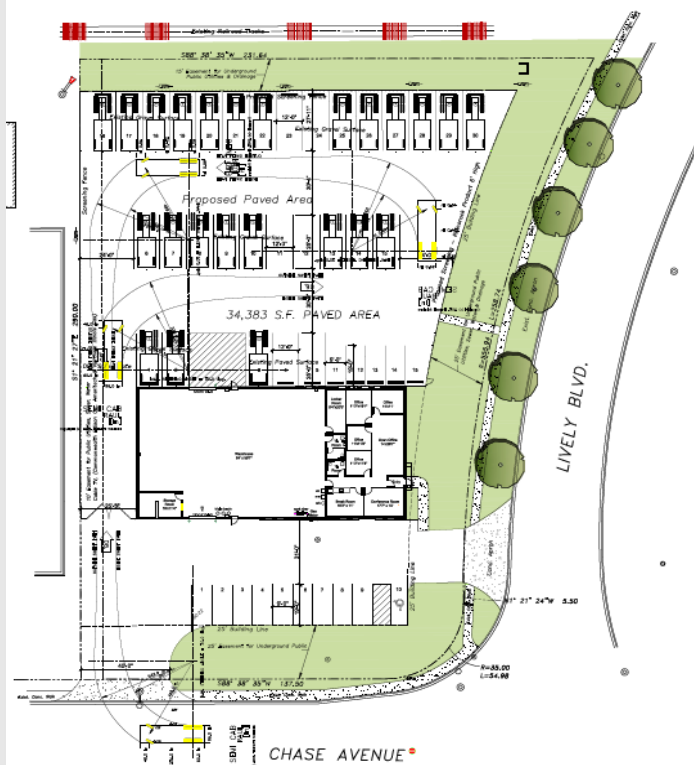


**Fleet Maintenance Facility With Outdoor Storage Yard**

## Building Highlights

- 54,572 S.F. gross +/- Land
- 7,600 S.F. gross +/- Building
- 2,240 S.F. gross +/- Office
- 5,360 S.F. gross +/- Warehouse/Maintenance Area
- 14' Clear +/-
- 2 DIDs (12' x 14')
- 15 Car Stalls +/-
- 30 Bobtail/Tractor Stalls +/- (Outdoor Storage)
- Triple Catch Basin
- Enclosed/Fenced Yard Space
- Gas Unit Heaters, Air Conditioned Office
- Rental Rate: Subject to Offer
- CAM: Lessee Responsibility

Modern, High Image, & Excellent Corner Exposure  
 Ideal for Fleet Maintenance/Repair & Parking



*Building a better image*

For more information CONTACT: Giovanni Gullo or Mariann Gullo Phone: 847.364.7000 • Fax: 847.364.7030

*Gullo International Realty Group • 1100 Landmeier Road • Elk Grove Village, IL 60007*

*LinkedIn: [www.linkedin.com/company/gullo-international-development-corporation](http://www.linkedin.com/company/gullo-international-development-corporation)*

All information herein is from sources deemed reliable but not guaranteed accurate. Subject to errors, omissions, and to change of price and terms, prior sale or lease, all without notice. In compliance with Illinois law, Gullo International Realty Group (broker) hereby gives written notice of the existence of an agency relationship between broker and the owner of the above referenced property. All Gullo International Realty Group real estate agents represent the owner of the above property in negotiation of price terms, conditions, and the consummation of any lease or sale contract.