

# 1220 Walter Reed Rd, Fayetteville - Back Right

## Statistics

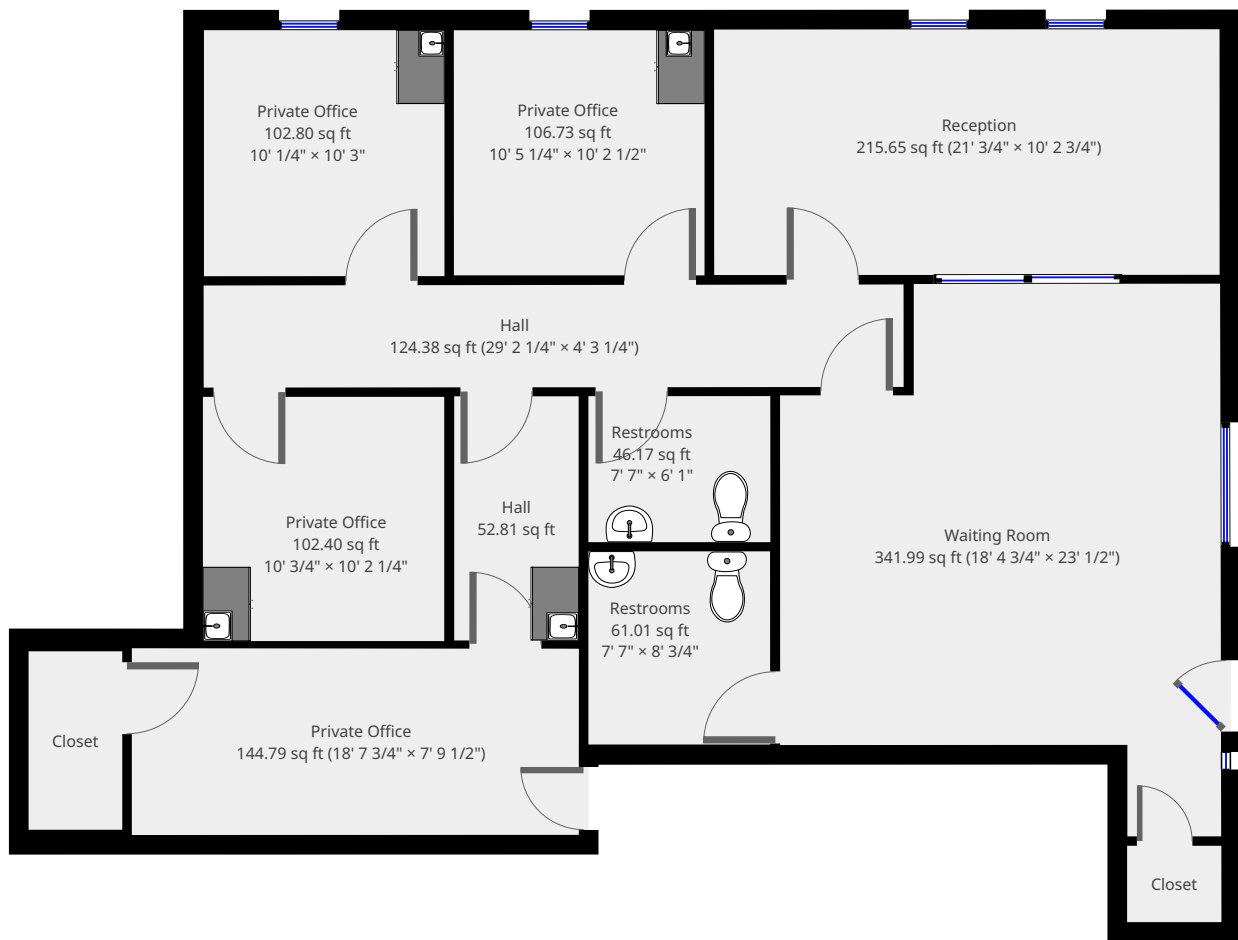
Area: 1557 sq ft

1 Floor

4 Offices

0 Conf. room

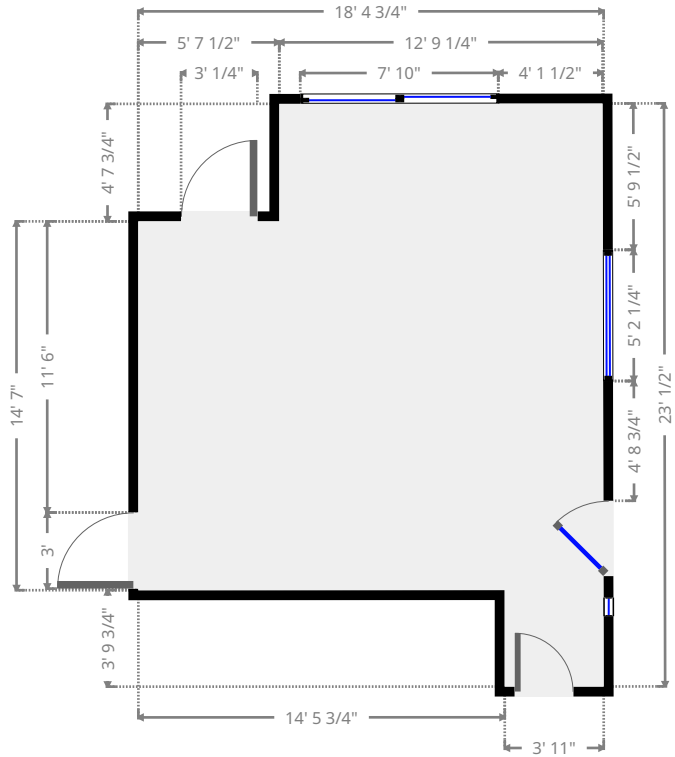
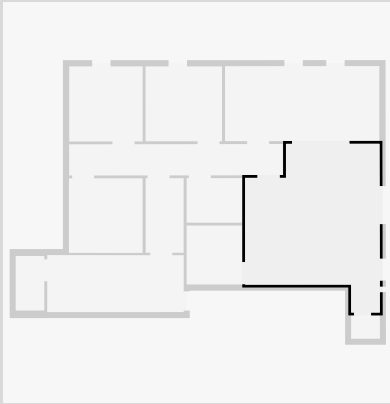
## Ground Floor



# 1220 Walter Reed Rd, Fayetteville - Back Right

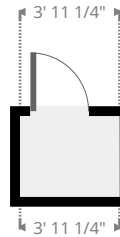
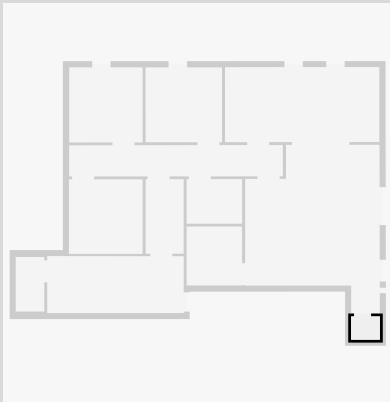
## Waiting Room

Width: 18' 4 3/4"  
 Length: 23' 1/2"  
 Area: 341.99 sq ft  
 Perimeter: 82' 9 3/4"



## Closet

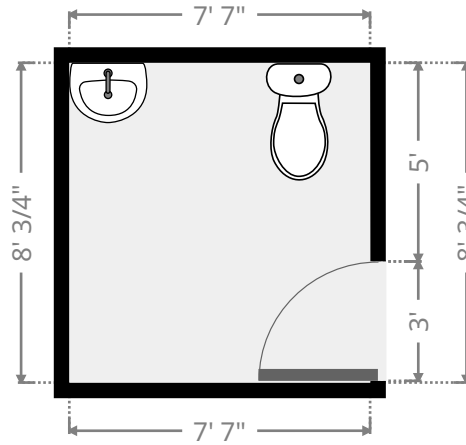
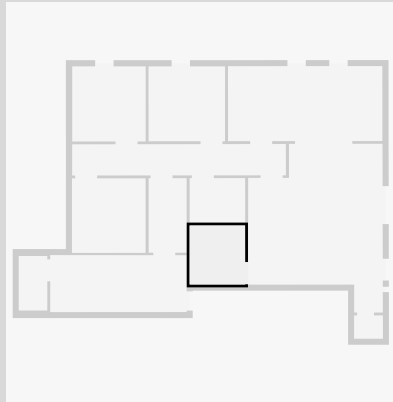
Width: 3' 2 1/4"  
 Length: 3' 11 1/4"  
 Area: 12.51 sq ft  
 Perimeter: 14' 2 3/4"



# 1220 Walter Reed Rd, Fayetteville - Back Right

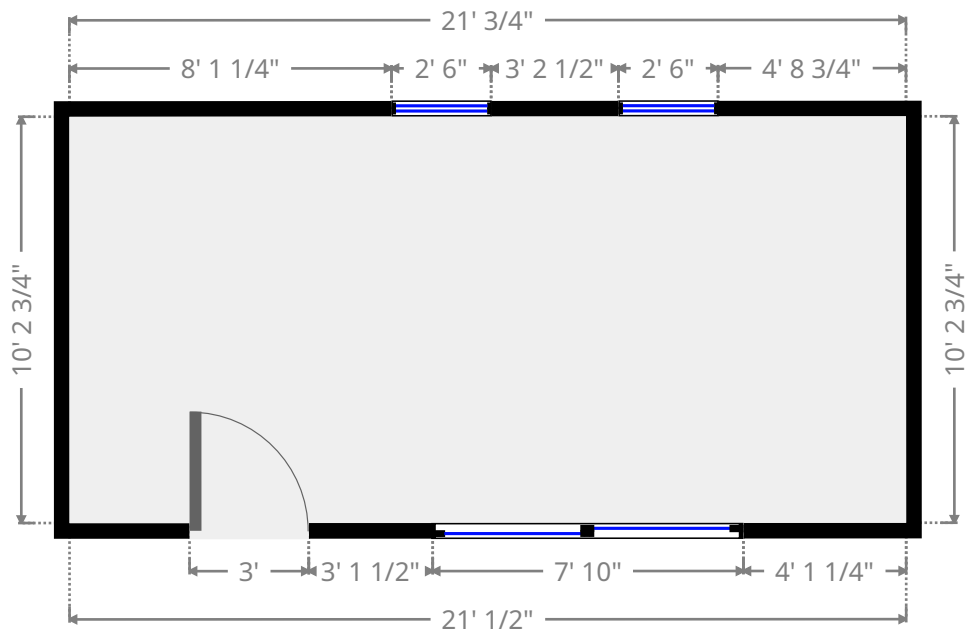
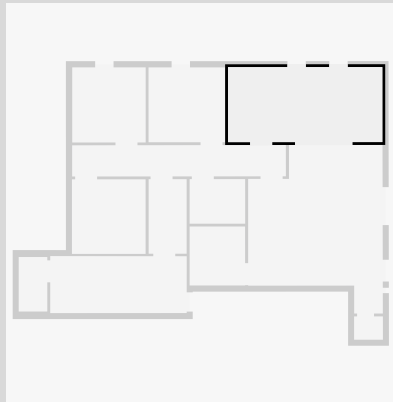
## Restrooms

Width: 7' 7"  
 Length: 8' 3/4"  
 Area: 61.01 sq ft  
 Perimeter: 31' 3"



## Reception

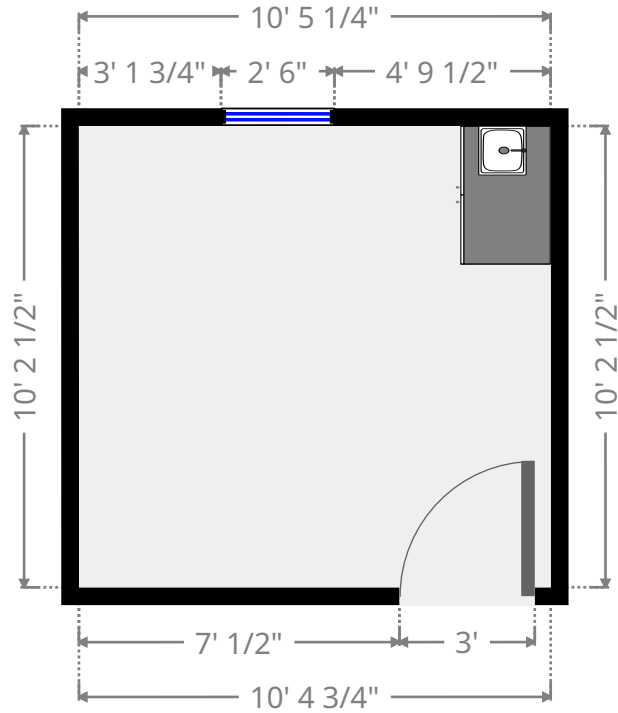
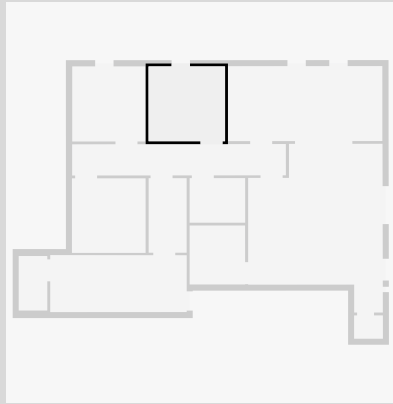
Width: 10' 2 3/4"  
 Length: 21' 3/4"  
 Area: 215.65 sq ft  
 Perimeter: 62' 7 1/4"



# 1220 Walter Reed Rd, Fayetteville - Back Right

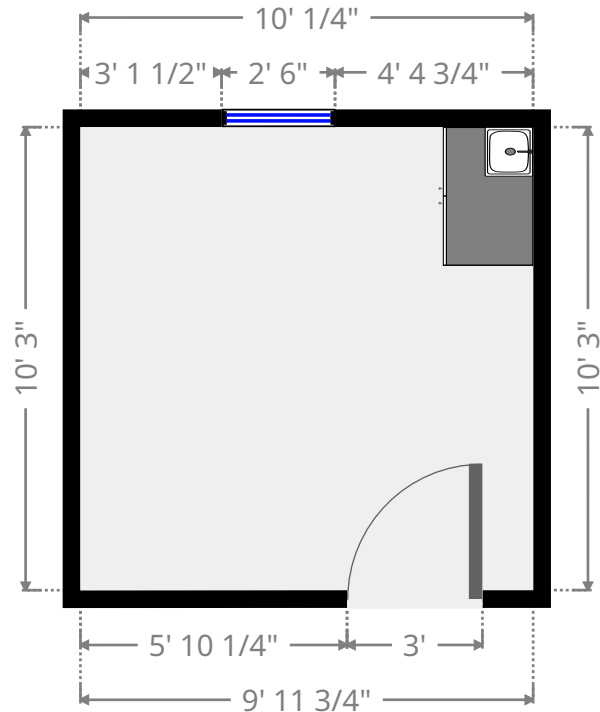
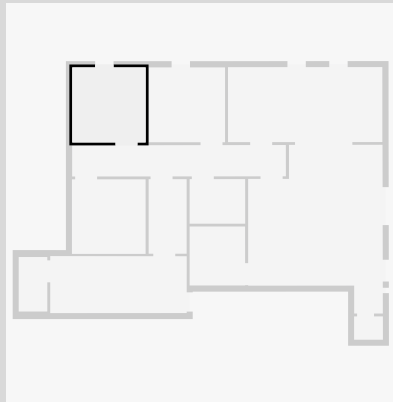
## Private Office

Width: 10' 2 1/2"  
 Length: 10' 5 1/4"  
 Area: 106.73 sq ft  
 Perimeter: 41' 4"



## Private Office

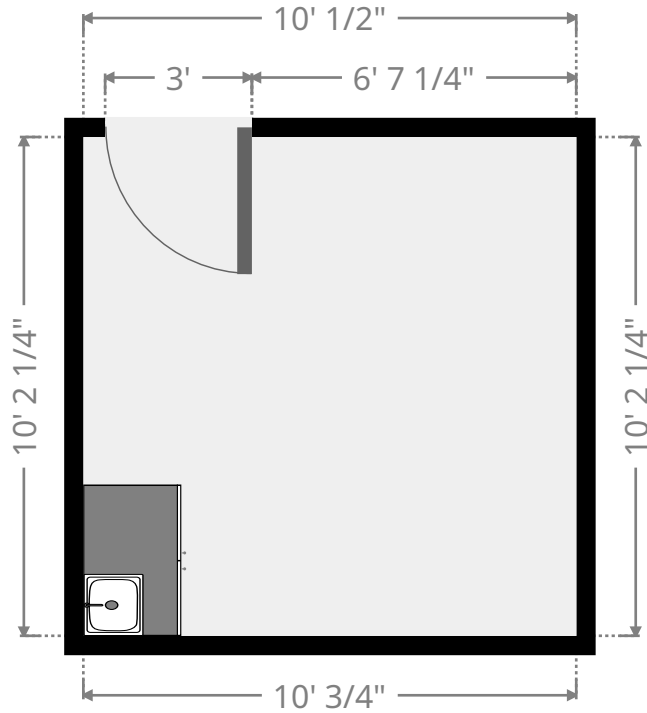
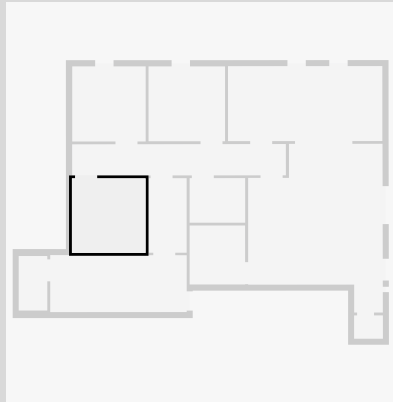
Width: 10' 1/4"  
 Length: 10' 3"  
 Area: 102.80 sq ft  
 Perimeter: 40' 6 3/4"



# 1220 Walter Reed Rd, Fayetteville - Back Right

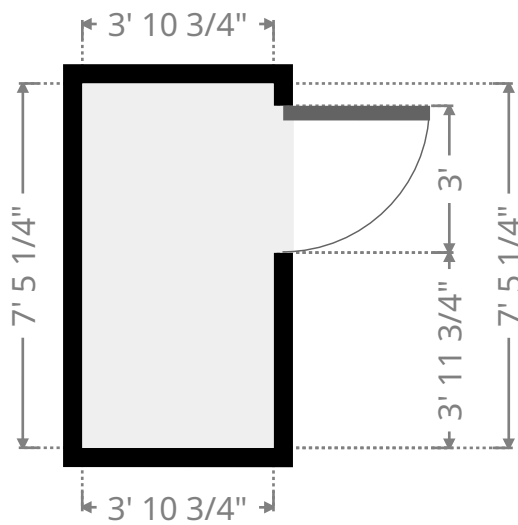
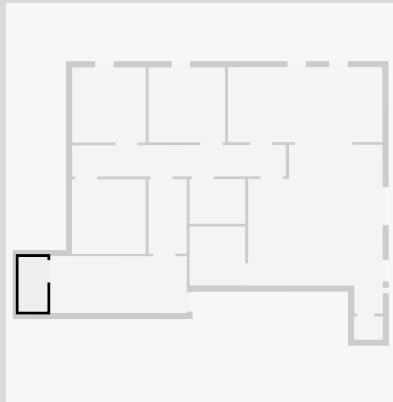
## Private Office

Width: 10' 3/4"  
 Length: 10' 2 1/4"  
 Area: 102.40 sq ft  
 Perimeter: 40' 5 3/4"



## Closet

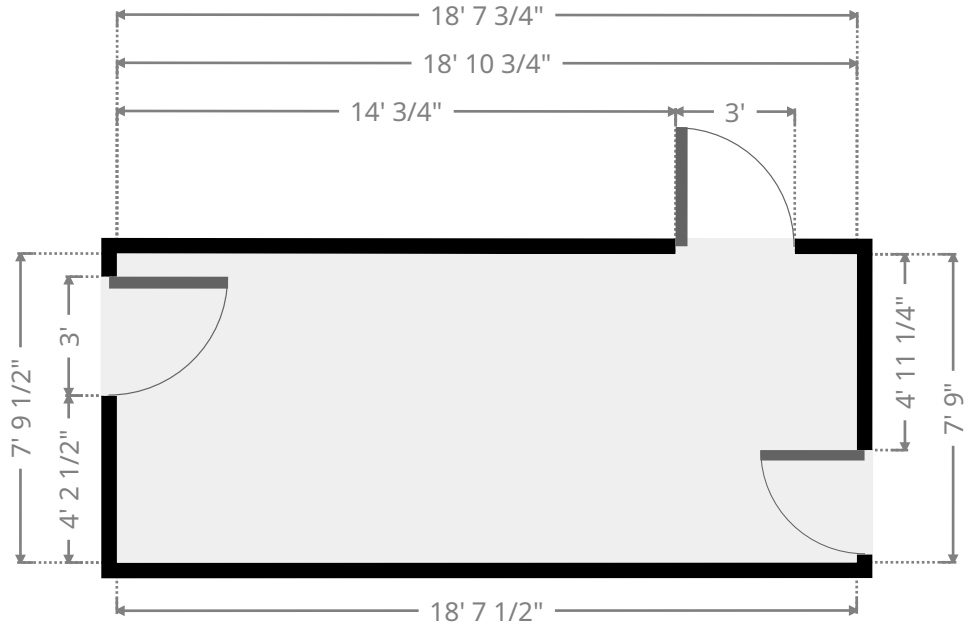
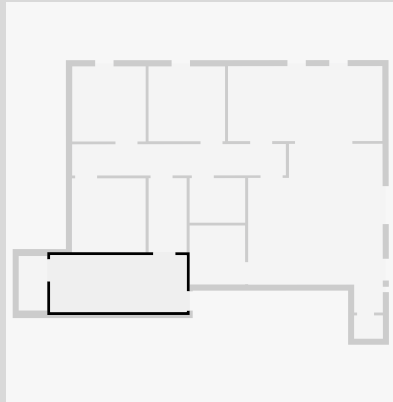
Width: 3' 10 3/4"  
 Length: 7' 5 1/4"  
 Area: 29.02 sq ft  
 Perimeter: 22' 8 1/4"



# 1220 Walter Reed Rd, Fayetteville - Back Right

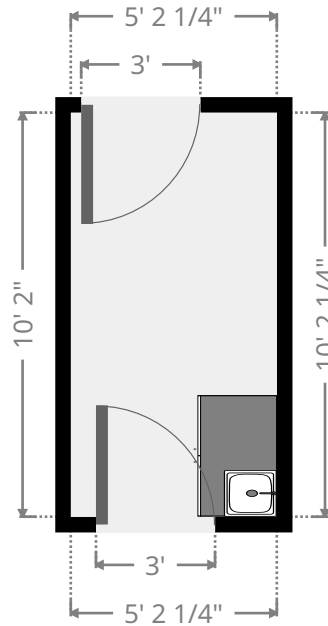
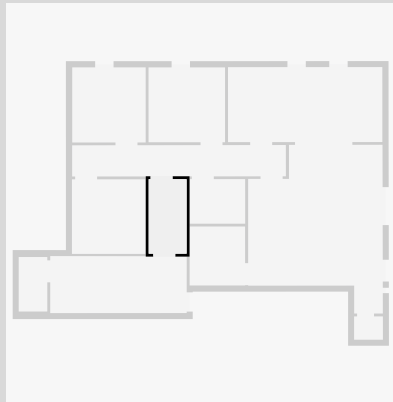
## Private Office

Width: 7' 9 1/2"  
 Length: 18' 7 3/4"  
 Area: 144.79 sq ft  
 Perimeter: 52' 9 3/4"



## Hall

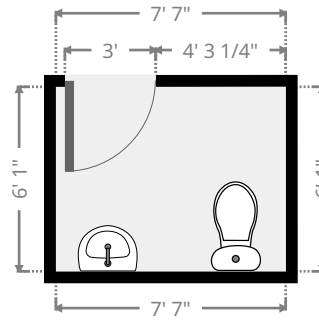
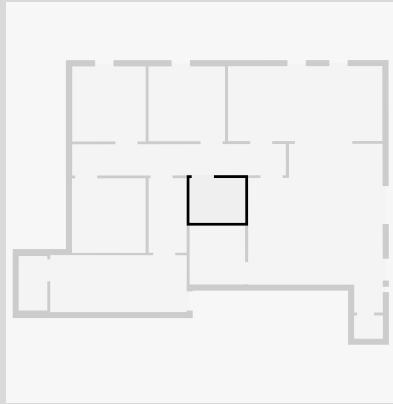
Width: 5' 2 1/4"  
 Length: 10' 2 1/4"  
 Area: 52.81 sq ft  
 Perimeter: 30' 8 3/4"



# 1220 Walter Reed Rd, Fayetteville - Back Right

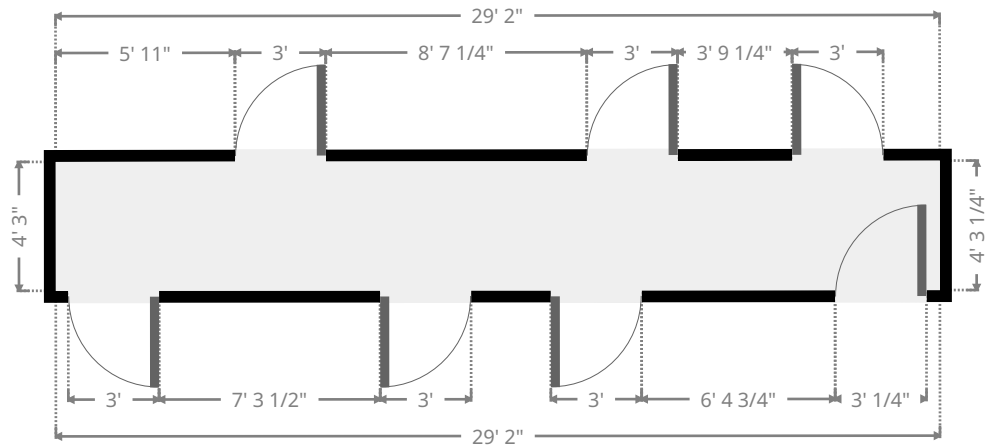
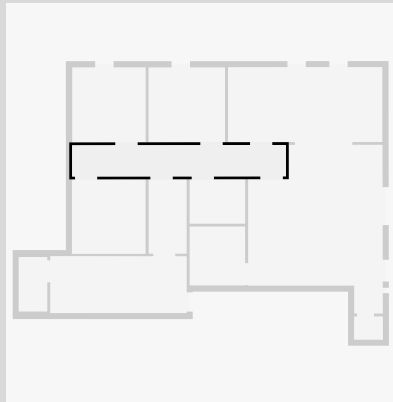
## Restrooms

Width: 6' 1"  
 Length: 7' 7"  
 Area: 46.17 sq ft  
 Perimeter: 27' 4"



## Hall

Width: 4' 3 1/4"  
 Length: 29' 2 1/4"  
 Area: 124.38 sq ft  
 Perimeter: 66' 10 1/2"



THIS FLOORPLAN IS PROVIDED WITHOUT WARRANTY OF ANY KIND. BROKEN CRAYON PHOTOGRAPHY DISCLAIMS ANY WARRANTY INCLUDING, WITHOUT LIMITATION, SATISFACTORY QUALITY OR ACCURACY OF DIMENSIONS.