

1239 Broadway

Midtown South, New York
Northwest corner of 30th Street

Building Overview

1239 Broadway is quickly becoming a tech-hub for some of NYC's fastest growing companies. The compelling pricepoint mixed with the modern, sleek tech buildouts makes it an ideal building for growth. Easy commute lines and access to some of the newest hotels in NYC – Ritz Carlton, The Virgin, The Ned, etc.

Building Highlights

- 16-story, 140,000 SF office building
- Blocks from Penn Station, Herald Square, Path Train
- Some of the best restaurants/bars located nearby
- Tenant controlled A/C
- Lobby updated in 2021

Lease Term

Negotiable (direct with ownership).

Landlord can make modifications per tenants desired layout.

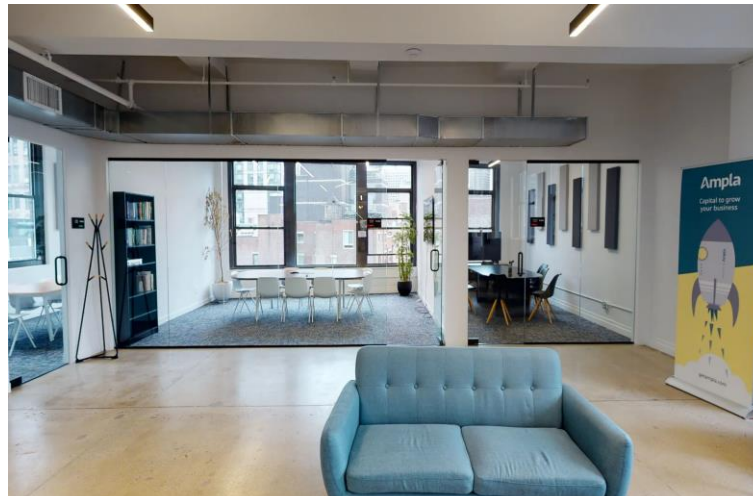
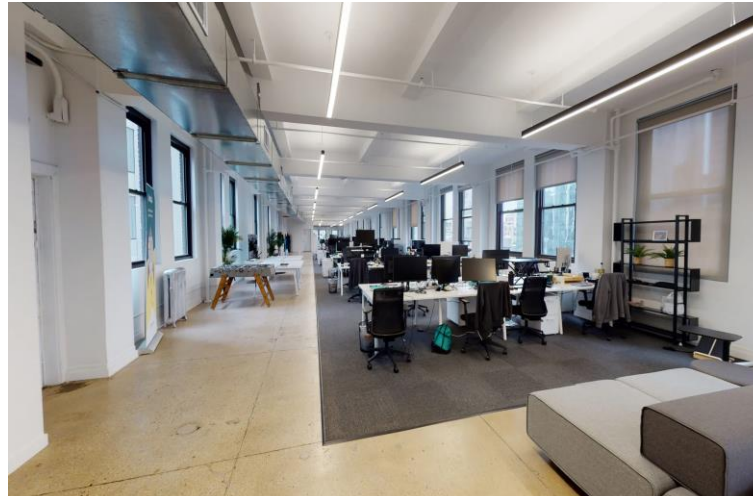
Can be delivered fully furnished and wired.



Space Description

Full floor at 1239 Broadway (12,500 SF) with unparallel natural light. The space has a modern buildout with a large dine-in wet pantry, sleek polished concrete and new glass fronted office / meeting rooms. Please see virtual tour below!

[View Virtual Tour](#)



Floor Plan

\$46,153 / month

1239 Broadway

Entire 12th Floor

12,040 SF

Open Seating

| | |
|----------------|---------|
| Workstations | 50 – 80 |
| Reception Area | 1 |

Collaboration Space

| | |
|----------------------|---|
| Office/Meeting Rooms | 6 |
| Conference Rooms | 2 |

Support

| | |
|----------------------|---|
| Wet Pantry / Kitchen | 1 |
| Phone Booths | 5 |

