

FOR LEASE



COMMONWEALTH
COMMERCIAL
Comprehensive Property Solutions

The Village at Waterford

13541 Waterford Place | Midlothian, VA 23112



PROPERTY HIGHLIGHTS

- › 1,900± SF of available end-cap space
- › Multi-tenant strip shadowing Food Lion anchored center
- › Easily accessible to Hull Street, Powhite Parkway, & Rte 288
- › Close proximity to River City Sportsplex, Waterford Office Park, & Brandermill Neighborhood

| DEMOGRAPHICS | 1 MILE | 3 MILE | 5 MILE |
|-------------------|----------|-----------|-----------|
| TOTAL POPULATION | 6,597 | 56,346 | 131,363 |
| AVERAGE HH INCOME | \$98,300 | \$114,673 | \$113,278 |
| DAYTIME EMPLOYEES | 2,315 | 14,143 | 39,124 |

FOR MORE INFORMATION:

HARTLEY JORDAN

Sales & Leasing Associate

804-964-2391

hjordan@commonwealthcommercial.com

JIM MCVEY

Senior Vice President | Partner

804-433-1824

jmcvey@commonwealthcommercial.com

Commonwealth Commercial Partners, LLC represents the Owner of this property. Information contained herein is deemed reliable but is not guaranteed.

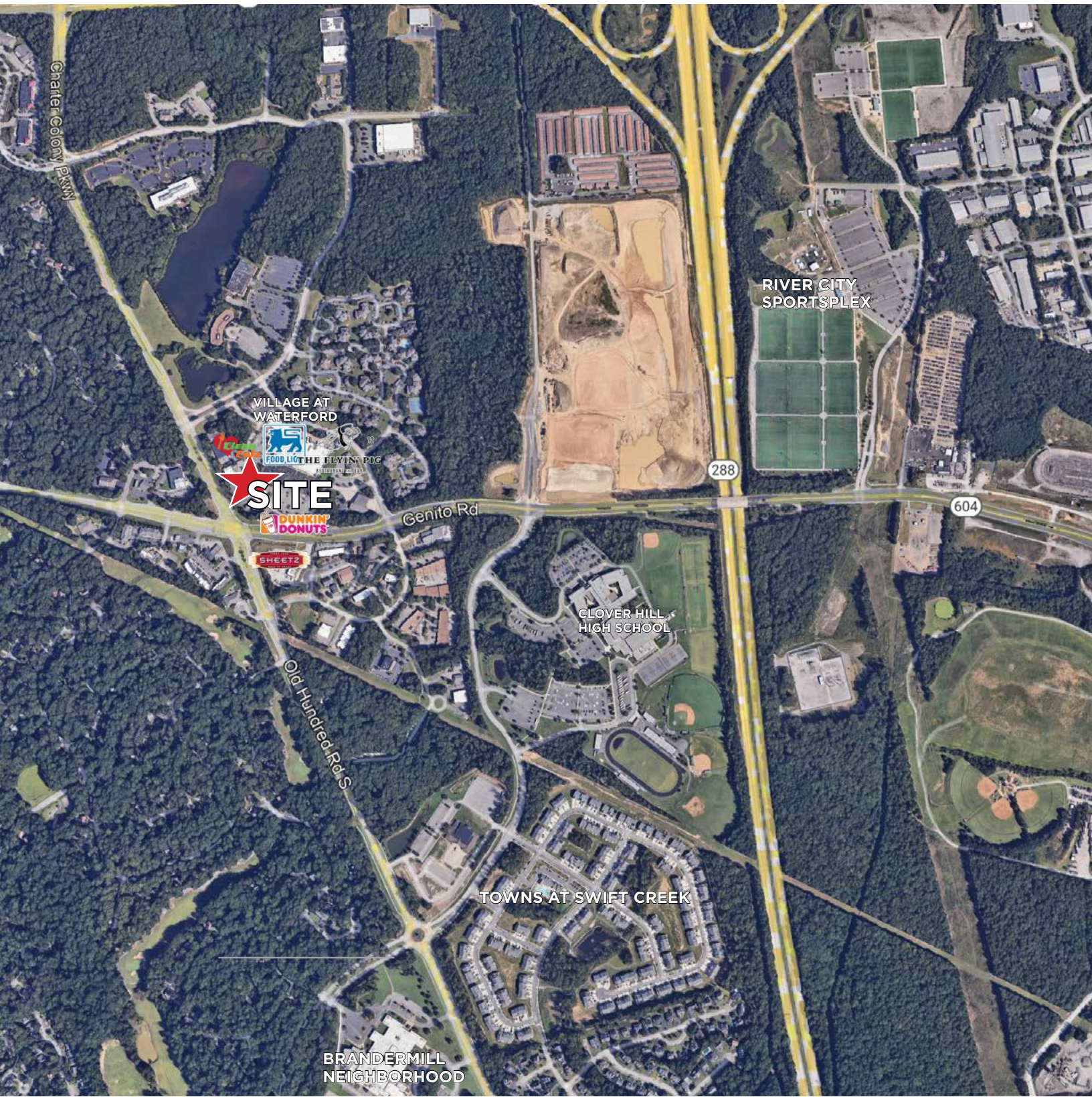


FOR LEASE | 13541 WATERFORD PLACE | MIDLOTHIAN, VA 23112



FOR LEASE | 13541 WATERFORD PLACE | MIDLOTHIAN, VA 23112

SURROUNDING AREA



FOR LEASE | 13541 WATERFORD PLACE | MIDLOTHIAN, VA 23112



**COMMONWEALTH
COMMERCIAL**
Comprehensive Property Solutions