

LYONSTAHLL
INVESTMENT REAL ESTATE

SAMIMI
INVESTMENTS



OFFERING MEMORANDUM

9216 BALLY CT.

RANCHOCUCAMONGA, CA 91730

INDUSTRIAL CONDO

\$3,990,000

OLGA WRIGHT

310.801.7373

olga@lyonstahl.com

DRE #01315042

CAMERON SAMIMI

310.259.7556

cameron@lyonstahl.com

DRE #02035763

TABLE OF CONTENTS

CONFIDENTIALITY & DISCLAIMER

All materials and information received or derived from Samimi Investment Real Estate, LLC its directors, officers, agents, advisors, affiliates and/or any third party sources are provided without representation or warranty as to completeness, veracity, or accuracy, condition of the property, compliance or lack of compliance with applicable governmental requirements, developability or suitability, financial performance of the property, projected financial performance of the property for any party's intended use or any and all other matters.

Neither Samimi Investment Real Estate, LLC its directors, officers, agents, advisors, or affiliates makes any representation or warranty, express or implied, as to accuracy or completeness of the any materials or information provided, derived, or received. Materials and information from any source, whether written or verbal, that may be furnished for review are not a substitute for a party's active conduct of its own due diligence to determine these and other matters of significance to such party. Samimi Investment Real Estate, LLC will not investigate or verify any such matters or conduct due diligence for a party unless otherwise agreed in writing.

EACH PARTY SHALL CONDUCT ITS OWN INDEPENDENT INVESTIGATION AND DUE DILIGENCE.

Any party contemplating or under contract or in escrow for a transaction is urged to verify all information and to conduct their own inspections and investigations including through appropriate third party independent professionals selected by such party. All financial data should be verified by the party including by obtaining and reading applicable documents and reports and consulting appropriate independent professionals. Samimi Investment Real Estate, LLC makes no warranties and/or representations regarding the veracity, completeness, or relevance of any financial data or assumptions. Samimi Investment Real Estate, LLC does not serve as a financial advisor to any party regarding any proposed transaction. All data and assumptions regarding financial performance, including that used for financial modeling purposes, may differ from actual data or performance. Any estimates of market rents and/or projected rents that may be provided to a party do not necessarily mean that rents can be established at or increased to that level. Parties must evaluate any applicable contractual and governmental limitations as well as market conditions, vacancy factors and other issues in order to determine rents from or for the property.

Legal questions should be discussed by the party with an attorney. Tax questions should be discussed by the party with a certified public accountant or tax attorney. Title questions should be discussed by the party with a title officer or attorney. Questions regarding the condition of the property and whether the property complies with applicable governmental requirements should be discussed by the party with appropriate engineers, architects, contractors, other consultants and governmental agencies. All properties and services are marketed by Samimi Investment Real Estate, LLC in compliance with all applicable fair housing and equal opportunity laws.

TABLE OF CONTENTS

PROPERTY INFORMATION	3
PROPERTY PHOTOS	6
SALES COMPS ANALYSIS	12
LEASE COMPARABLES	18
LOCATION OVERVIEW	23

PROPERTY INFORMATION



THE OFFERING



Exceptional industrial/flex opportunity located at **9216 Bally Court, Rancho Cucamonga, CA 91730**—in the heart of an established **Opportunity Zone**, offering significant potential tax advantages for investors and business owners.

This **12,700 SF freestanding building** is designed to support a wide range of industrial operations. The interior features a **reception/waiting area, seven private offices, a conference room**, six restrooms, and **multiple storage areas**, providing a balanced mix of functional warehouse space and professional-grade administrative areas.

For logistics and distribution efficiency, the property is equipped with **two dock-high doors (12'W x 14'H) and one ground-level door (12'W x 16'H)**, complemented by **400 amps, 277/480 volts** of heavy power. The building also includes a fire sprinkler system and **22 marked parking spaces for employees and visitors.**

Located in a high-demand industrial corridor, average rents in this market are approximately **\$18.41/SF/Yr**, making this an attractive **owner-user purchase opportunity**. By acquiring the property rather than leasing, companies can secure long-term occupancy at a potentially lower effective cost while building equity and capitalizing on Opportunity Zone incentives. Close Proximity to I-10, I-15 & CA-210 Freeways

PROPERTY INFORMATION

PROPERTY DETAILS

Address	9216 Bally Ct Rancho Cucamonga, CA 91730
Price	\$3,990,000
Total Building Sqft.	12,700 SF
Total Lot Size	12,701 SF
Price / SF (RSF)	\$314.17
Year Built	1986
APN	0209-261-48



INVESTMENT HIGHLIGHTS

- **Building** Includes Reception/Waiting area, **7 Offices**, **Conference Room**, Full Kitchen, 6 Bathrooms, Shower, Multiple Storages and the **Warehouse/Open Work Space**
- **Two (2) Dock Doors** (12'W x 14'H) and One (1) Ground Level Door (12'W x 16'H) **400 Amps, 277/480 Volts**
- 22 Parking Spaces
- Fire Sprinkler System
- **Close Proximity** to I-10, I-15 & CA-210 Freeways

PROPERTY PHOTOS



PROPERTY PHOTOS
PROPERTY PHOTOS



PROPERTY PHOTOS
PROPERTY PHOTOS

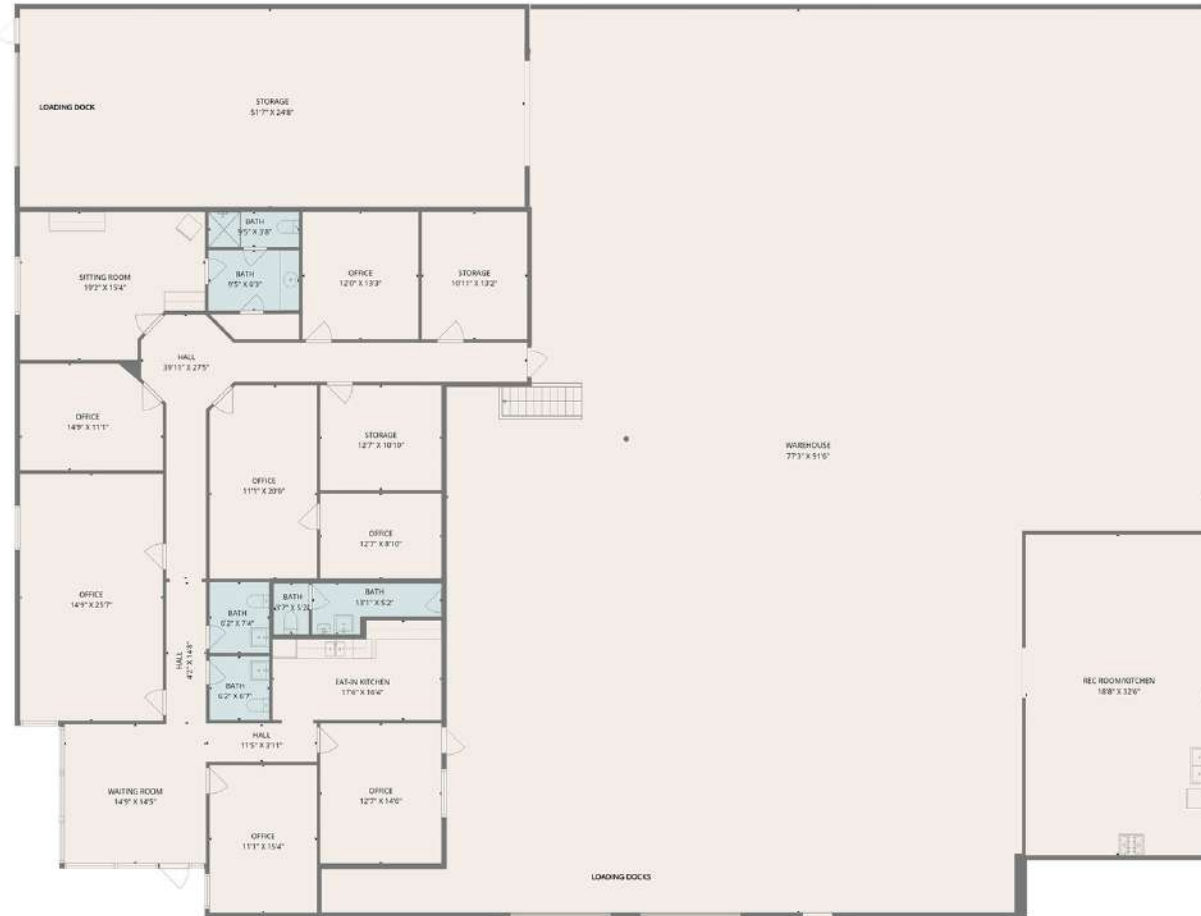


PROPERTY PHOTOS
PROPERTY PHOTOS



9216 Bally Ct

Rancho Cucamonga, CA 91730

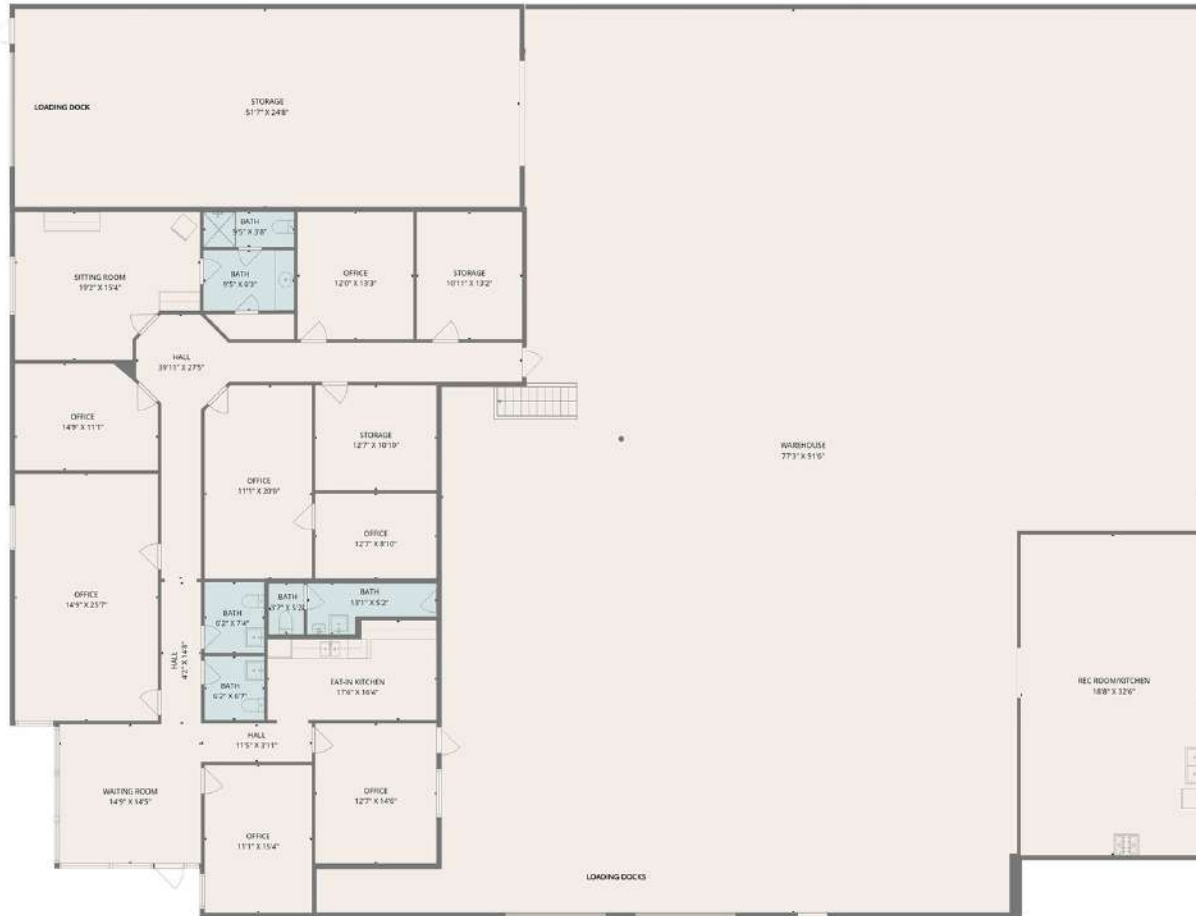


Main Floorplan

DISCLAIMER: Measurements are approximate.
It is the responsibility of the buyer to verify the property's
measurements and square footage independently.

9216 Bally Ct

Rancho Cucamonga, CA 91730



Main Floorplan

DISCLAIMER: Measurements are approximate.
It is the responsibility of the buyer to verify the property's
measurements and square footage independently.

SALES COMPS ANALYSIS



SALES COMPS ANALYSIS

INDUSTRIAL SALE COMPS



9216 BALLY CT

Rancho Cucamonga, CA 91730

Subject Property

Price:	\$3,990,000	Bldg Size:	12,700 SF
Lot Size:	12,701 SF	Year Built:	1986
Price/SF:	\$314.17	Price/Unit:	\$3,990,000

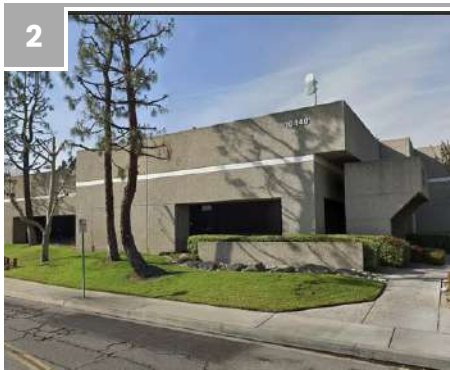
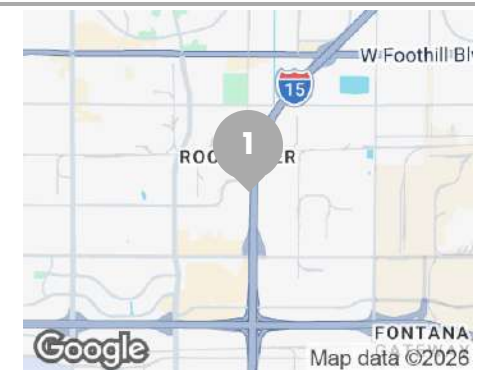


9221 CHARLES SMITH AVE

9221 Charles Smith Ave, Rancho Cucamonga, CA 91730

Sold 6/3/2025

Price:	\$2,969,169	Bldg Size:	8,317 SF
Lot Size:	21,780 SF	Year Built:	2007
Price/SF:	\$357.00		



10440 TRADEMARK ST

10440 Trademark St, Rancho Cucamonga, CA 91730

Sold 5/23/2025

Price:	\$4,950,000	Bldg Size:	14,676 SF
Lot Size:	40,965 SF	Year Built:	1986
Price/SF:	\$337.29		



SALES COMPS ANALYSIS

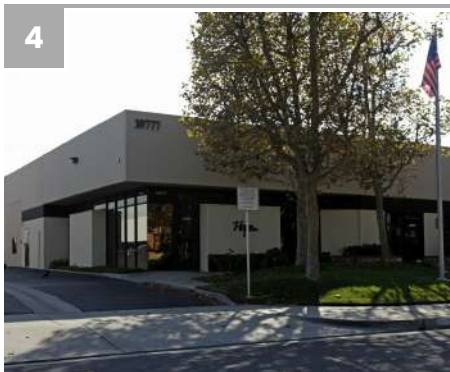
INDUSTRIAL SALE COMPS



3
10309 REGIS CT
Rancho Cucamonga, CA 91730

Sold 4/29/2025

Price:	\$3,257,500	Bldg Size:	9,871 SF
Lot Size:	24,829 SF	Year Built:	1998
Price/SF:	\$330.01		



4
10777 CIVIC CENTER DR
10777 Civic Center Dr, Rancho Cucamonga, CA 91730

Sold 4/10/2025

Price:	\$2,462,000	Bldg Size:	7,200 SF
Lot Size:	15,246 SF	Year Built:	1982
Price/SF:	\$341.94		



5
9038 HELLMAN AVE
9038 Hellman Ave, Rancho Cucamonga, CA 91730

Sold 4/2/2025

Price:	\$2,200,000	Bldg Size:	7,607 SF
Lot Size:	19,602 SF	Year Built:	2004
Price/SF:	\$289.21		



SALES COMPS ANALYSIS

INDUSTRIAL SALE COMPS



6

8647 HELMS AVE
8647 Helms Ave, Rancho Cucamonga, CA 91730

Sold 3/3/2025

Price:	\$10,700,000	Bldg Size:	26,158 SF
Lot Size:	89,733 SF	Year Built:	2003
Price/SF:	\$409.05		



7

9349 FERON BLVD
9349 Feron Blvd, Rancho Cucamonga, CA 91730

Sold 2/10/2025

Price:	\$4,195,475	Bldg Size:	9,952 SF
Lot Size:	27,732 SF	Year Built:	2006
Price/SF:	\$421.57		



8

12120 6TH ST
12120 6th St, Rancho Cucamonga, CA 91730

Sold 1/3/2025

Price:	\$4,060,000	Bldg Size:	12,000 SF
Lot Size:	35,719 SF	Year Built:	2006
Price/SF:	\$338.33		



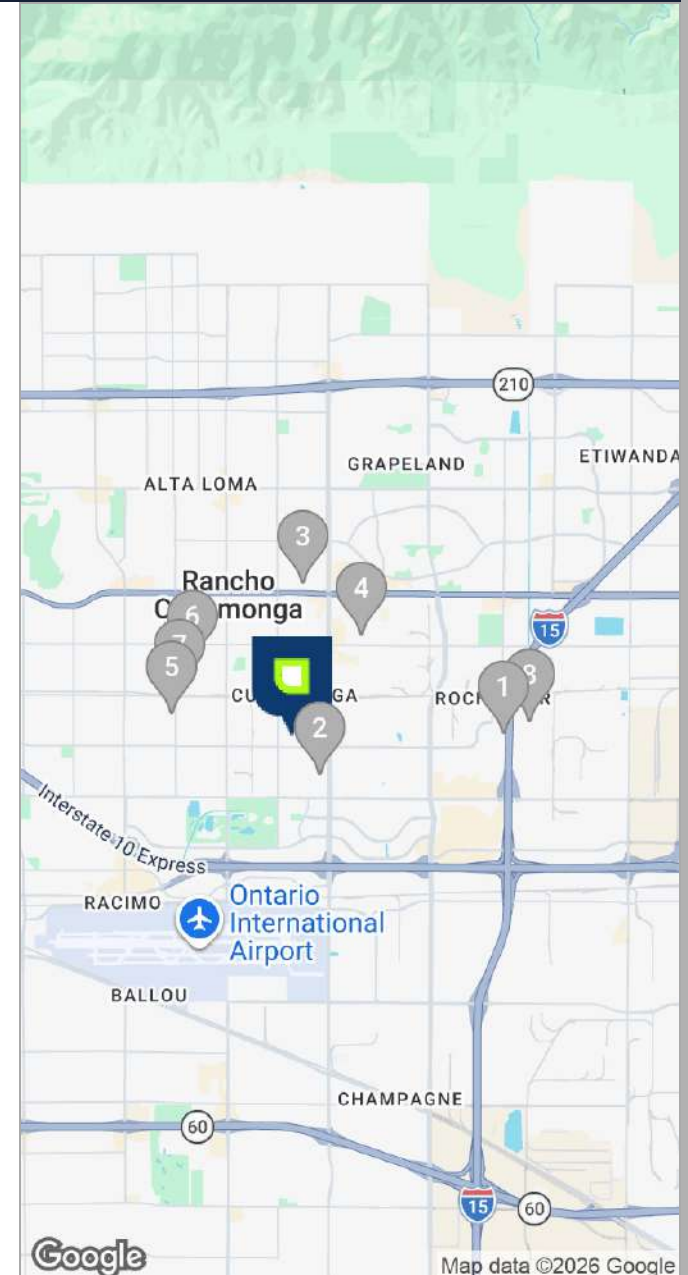
SALES COMPS ANALYSIS

COMPS SUMMARY

Property Address	City	Sale Price	Type	Yr. Built	Bldg Size	Land Area SF	\$/Per SF	COE
9221 Charles Smith Ave	Rancho Cucamonga	\$2,969,169	Industrial	2007	8,317	21,780	\$357.00	6/3/2025
10440 Trademark St	Rancho Cucamonga	\$4,950,000	Industrial	1986	14,676	40,965	\$337.29	5/28/2025
10309 Regis Ct	Rancho Cucamonga	\$3,500,000	Industrial	1998	9,871	24,829	\$330.01	4/29/2025
10777 Civic Center Dr	Rancho Cucamonga	\$2,462,000	Industrial	1982	7,200	15,246	\$341.94	4/10/2025
9038 Hellman Ave	Rancho Cucamonga	\$2,200,000	Industrial	2004	7,607	19,602	\$289.21	4/2/2025
8647 Helms Ave	Rancho Cucamonga	\$10,700,000	Industrial	2003	26,158	89,733	\$409.05	3/3/2025
9349 Feron Blvd	Rancho Cucamonga	\$4,195,475	Industrial	2006	9,952	27,732	\$421.57	2/10/2025
12120 6th St	Rancho Cucamonga	\$4,060,000	Industrial	2006	12,000	35,719	\$338.33	1/3/2025
Average							\$353.05	
9216 Bally Ct.	Rancho Cucamonga	\$3,990,000	Industrial	1986	12,700	12,701	\$314.17	Active

SALE COMPS MAP & SUMMARY

	NAME/ADDRESS	PRICE	BLDG SIZE	LOT SIZE	PRICE/SF	DEAL STATUS
★	9216 Bally Ct Rancho Cucamonga, CA	\$3,990,000	12,700 SF	12,701 SF	\$314.17	Subject Property
1	9221 Charles Smith Ave 9221 Charles Smith Ave Rancho Cucamonga, CA	\$2,969,169	8,317 SF	21,780 SF	\$357.00	Sold 6/3/2025
2	10440 Trademark St 10440 Trademark St Rancho Cucamonga, CA	\$4,950,000	14,676 SF	40,965 SF	\$337.29	Sold 5/23/2025
3	10309 Regis Ct Rancho Cucamonga, CA	\$3,257,500	9,871 SF	24,829 SF	\$330.01	Sold 4/29/2025
4	10777 Civic Center Dr 10777 Civic Center Dr Rancho Cucamonga, CA	\$2,462,000	7,200 SF	15,246 SF	\$341.94	Sold 4/10/2025
5	9038 Hellman Ave 9038 Hellman Ave Rancho Cucamonga, CA	\$2,200,000	7,607 SF	19,602 SF	\$289.21	Sold 4/2/2025
6	8647 Helms Ave 8647 Helms Ave Rancho Cucamonga, CA	\$10,700,000	26,158 SF	89,733 SF	\$409.05	Sold 3/3/2025
7	9349 Feron Blvd 9349 Feron Blvd Rancho Cucamonga, CA	\$4,195,475	9,952 SF	27,732 SF	\$421.57	Sold 2/10/2025
8	12120 6th St 12120 6th St Rancho Cucamonga, CA	\$4,060,000	12,000 SF	35,719 SF	\$338.33	Sold 1/3/2025
AVERAGES		\$4,349,268	11,973 SF	34,451 SF	\$353.05	



9216 Bally Ct - Rancho Cucamonga, CA 91730

LYONSTAHLL
INVESTMENT REAL ESTATE

LEASE COMPARABLES

LEASE COMPARABLES

LEASE COMPS



9216 BALLY CT
Rancho Cucamonga, CA 91730

Subject Property

Lease Rate: Negotiable



8768 HELMS AVENUE UNIT#B
Rancho Cucamonga, CA 91730

Leased

Lease Rate: \$19.80 /SF/yr Lease Type: Modified Gross
Space Size: 4,459 SF



11650 MISSION PARK DR
Rancho Cucamonga, CA 91730

Leased

Lease Rate: \$19.44 /SF/yr Lease Type: Modified Gross
Space Size: 6,807 SF



LEASE COMPARABLES

LEASE COMPS



3

9160 HYSSOP DR
Rancho Cucamonga, CA 91730

On Market

Lease Rate: \$17.40 /SF/yr Lease Type: Modified Gross
Space Size: 13,000 SF



4

9863 ACACIA ST
Rancho Cucamonga, CA 91730

On Market

Lease Rate: \$18.24 /SF/yr Lease Type: Modified Gross
Space Size: 13,490 SF



5

10851 EDISON CT
Rancho Cucamonga, CA 91730

On Market

Lease Rate: \$18.00 /SF/yr Lease Type: Modified Gross
Space Size: 14,830 SF



LEASE COMPARABLES

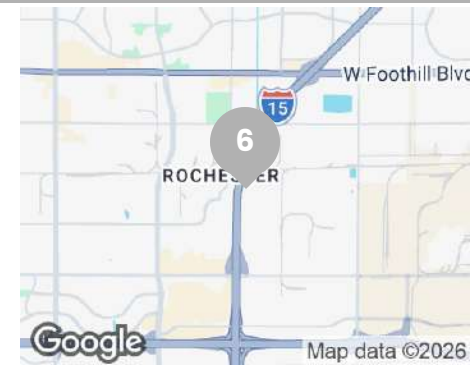
LEASE COMPS



6
9002 S HYSSOP DR
Rancho Cucamonga, CA 91730

On Market

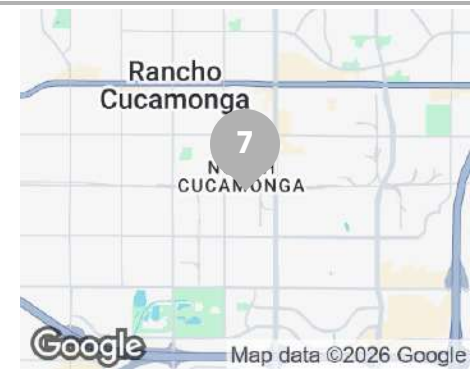
Lease Rate: \$18.60 /SF/yr Lease Type: Modified Gross
Space Size: 7,949 SF



7
8930 CENTER AVE
Rancho Cucamonga, CA 91730

On Market

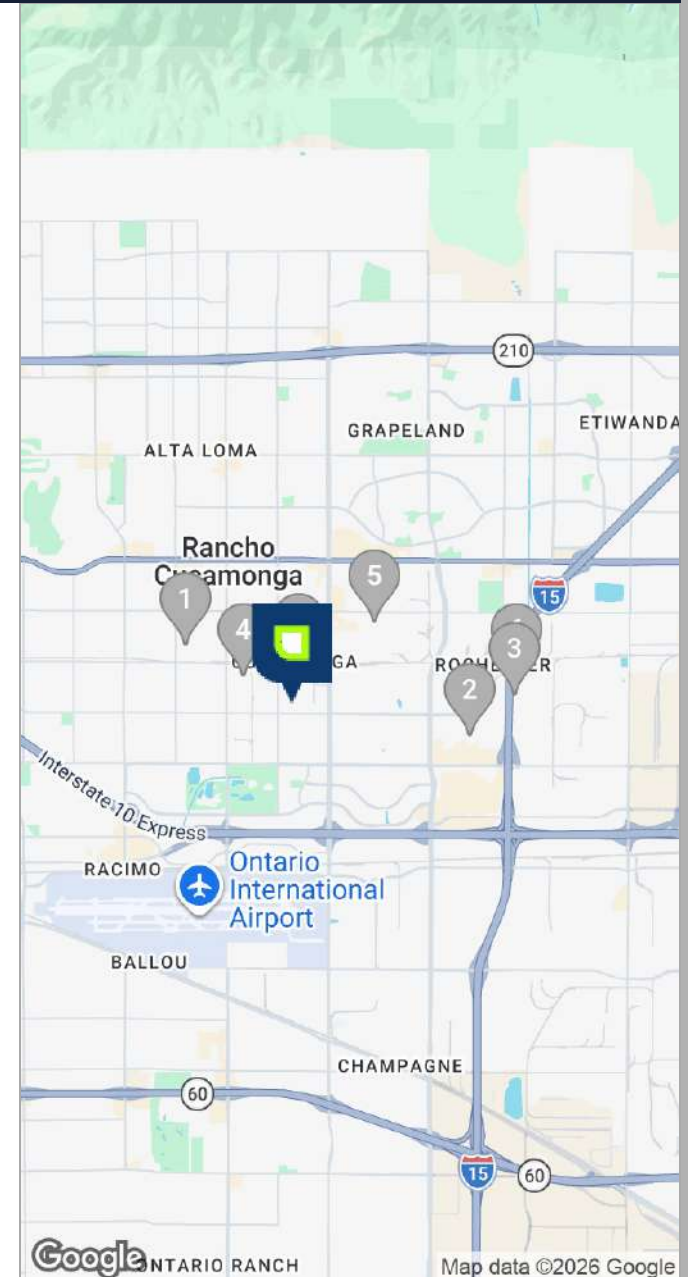
Lease Rate: \$17.40 /SF/yr Lease Type: Modified Gross
Space Size: 10,452 SF



LEASE COMPARABLES

LEASE COMPS MAP & SUMMARY

	NAME/ADDRESS	LEASE RATE	LEASE TYPE	SPACE SIZE
★	9216 Bally Ct Rancho Cucamonga, CA	Negotiable	-	-
1	8768 Helms Avenue Unit#B Rancho Cucamonga, CA	\$19.80 /SF/yr	Modified Gross	4,459 SF
2	11650 Mission Park Dr Rancho Cucamonga, CA	\$19.44 /SF/yr	Modified Gross	6,807 SF
3	9160 Hyssop Dr Rancho Cucamonga, CA	\$17.40 /SF/yr	Modified Gross	13,000 SF
4	9863 Acacia St Rancho Cucamonga, CA	\$18.24 /SF/yr	Modified Gross	13,490 SF
5	10851 Edison Ct Rancho Cucamonga, CA	\$18.00 /SF/yr	Modified Gross	14,830 SF
6	9002 S Hyssop Dr Rancho Cucamonga, CA	\$18.60 /SF/yr	Modified Gross	7,949 SF
7	8930 Center Ave Rancho Cucamonga, CA	\$17.40 /SF/yr	Modified Gross	10,452 SF
AVERAGES		\$18.41 /SF/YR		10,141 SF



9216 Bally Ct - Rancho Cucamonga, CA 91730

LOCATION OVERVIEW



LOCATION OVERVIEW

LOS ANGELES COUNTY



100

Over 100 colleges and universities, including UCLA, USC, and Caltech

5M

Highly educated and diverse workers

950B

GDP. One of the largest county economies in the world

Los Angeles County is powered by a highly educated labor force, leading universities, and world-class infrastructure. Its economic base is both broad and resilient, anchored by trade and logistics through the Ports of Los Angeles and Long Beach, clean technology, advanced transportation, healthcare, higher education, and the globally dominant media and entertainment industry.

The region's favorable climate, global connectivity, and reputation as a hub of creativity and innovation continue to attract investment, business, and talent from around the world. With major upcoming catalysts—including transformative infrastructure projects and the 2028 Summer Olympic Games—Los Angeles County is positioned to remain a world-class center for commerce, culture, and real estate growth.



RANCHO CUCAMONGA OVERVIEW

RANCHO CUCAMONGA

Rancho Cucamonga is a thriving city in San Bernardino County known for its balanced mix of vibrant business opportunities, scenic mountain views, and exceptional quality of life.

Rancho Cucamonga boasts a population of approximately 174,000, offering a diverse and welcoming community with a median household income of about \$109,511 and low poverty rates compared to regional averages. The city is recognized for its clean streets, numerous community parks, highly rated schools, and active local government focused on sustainability and growth.



Population

174,219



Median Household Income

\$109,511



Median Age

37.9



Average Household Income

135,440



RANCHO CUCAMONGA LIFESTYLE

ECONOMY AND ACCESSIBILITY

Strategically situated near major West Coast transportation routes and Ontario International Airport, Rancho Cucamonga is a logistics and commercial hub home to both Fortune 500 companies and thriving local enterprises. This includes well-known employers such as Southern California Edison, Amphastar Pharmaceuticals, and the Coca-Cola Company, as well as an extensive network of distribution centers and manufacturing facilities.

AMENITIES AND LIFESTYLE

Residents and businesses enjoy proximity to Victoria Gardens, a renowned outdoor shopping, dining, and entertainment district, plus more than 20 parks, museums, and cultural sites. The city's location beneath the San Gabriel Mountains offers picturesque views and access to hiking trails, while its family-friendly culture and robust local events calendar further enhance its appeal.



EXCLUSIVELY MARKETED BY

SAMIMI
INVESTMENTS

LYON STAHL
INVESTMENT REAL ESTATE

CAMERON SAMIMI

310.259.7556

cameron@lyonstahl.com

BRE. 02035763