

# 28350 South River Road

4,585 - 9,170 SF Retail Space Available



HARRISON TWP, MI 48045

---





# 28350 South River Road

Up to 9,170 SF Retail Space Available



CAN BE DEMISED TO +/- 4,500 SF



NEW BUILDING FACADE COMING SOON



LIGHT UP BUILDING AND PYLON SIGNAGE



55 PARKING SPACES



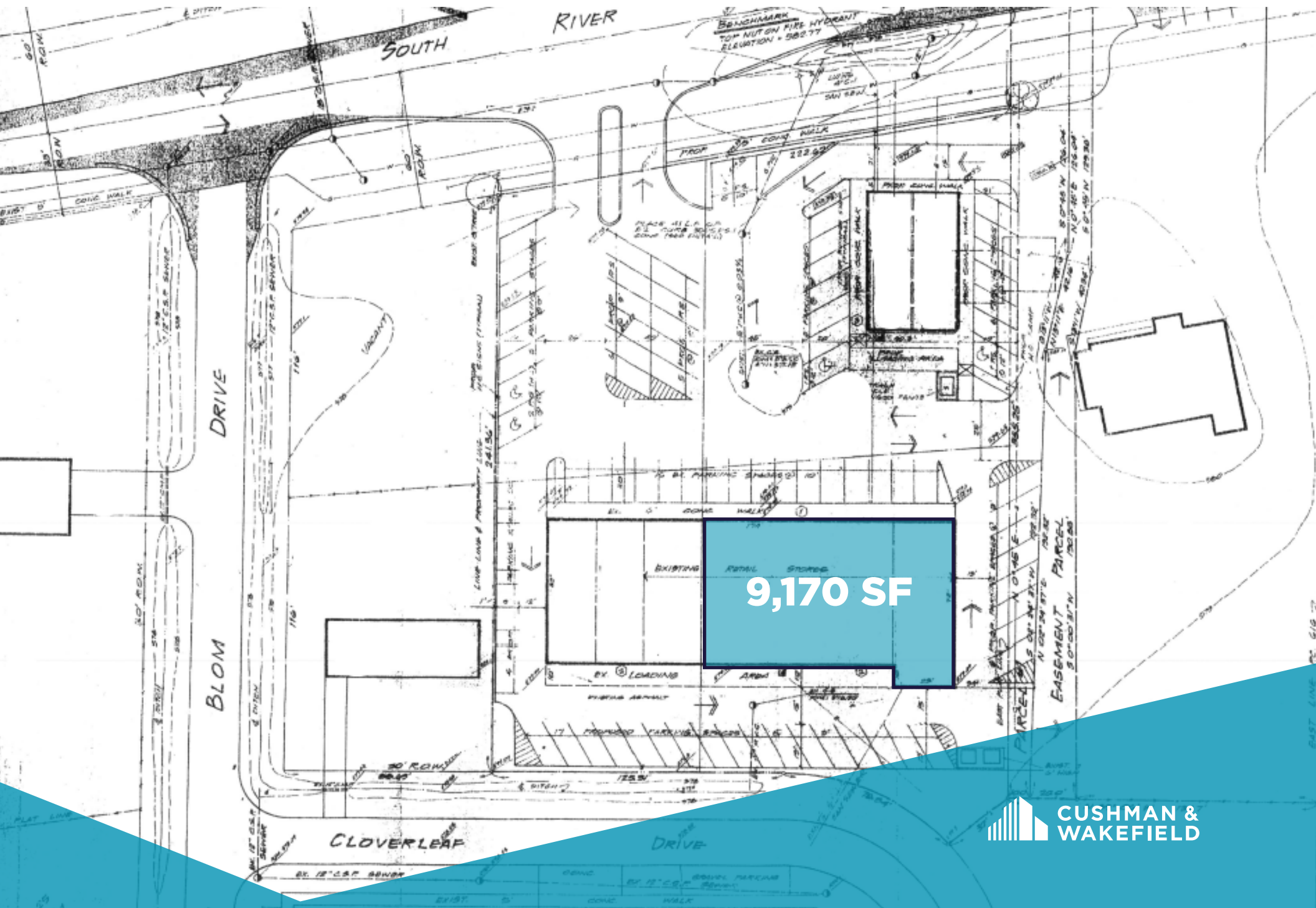
JOIN CARLOS PIZZA, CHILI PEPPERS  
TANNING, AND PRIVATE INSURANCE  
COMPANY



LEASE RATE: \$12.00/SF NNN



# SITE PLAN



CUSHMAN &  
WAKEFIELD







# LOCATION



7,717  
POPULATION  
within 1 mile

111,104  
POPULATION  
within 5 miles



\$104,006  
AVG. INCOME  
within 1 mile

\$77,783  
AVG. INCOME  
within 5 miles



\$286,327  
AVG. HOME VALUE  
within 1 mile

\$191,247  
AVG. HOME VALUE  
within 5 miles



844  
DAYTIME EMPLOYMENT  
within 1 mile

159,609  
DAYTIME EMPLOYMENT  
within 5 miles



28350  
South River Road

YOUR SIGN HERE

## CONTACT

Albert Ellis  
Senior Associate  
+1 248 358 6111  
albert.ellis@cushwake.com

[cushmanwakefield.com](http://cushmanwakefield.com)



©2025 Cushman & Wakefield. All rights reserved. The information contained in this communication is strictly confidential. This information has been obtained from sources believed to be reliable but has not been verified. NO WARRANTY OR REPRESENTATION, EXPRESS OR IMPLIED, IS MADE AS TO THE CONDITION OF THE PROPERTY (OR PROPERTIES) REFERENCED HEREIN OR AS TO THE ACCURACY OR COMPLETENESS OF THE INFORMATION CONTAINED HEREIN, AND SAME IS SUBMITTED SUBJECT TO ERRORS, OMISSIONS, CHANGE OF PRICE, RENTAL OR OTHER CONDITIONS, WITHDRAWAL WITHOUT NOTICE, AND TO ANY SPECIAL LISTING CONDITIONS IMPOSED BY THE PROPERTY OWNER(S). ANY PROJECTIONS, OPINIONS OR ESTIMATES ARE SUBJECT TO UNCERTAINTY AND DO NOT SIGNIFY CURRENT OR FUTURE PROPERTY PERFORMANCE.