

FOR LEASE / OFFICE / FOREST PLAZA I

7201 GLEN FOREST DRIVE

RICHMOND, VA 23226



PROPERTY FEATURES

- Updated exterior, common areas, lighting and restrooms
- Shared Fitness Center on-site
- Café located in 7202 Glen Forest Dr. building
- Park like atmosphere, sidewalks throughout for walking
- Ample retail amenities nearby including shopping dining, fitness & lodging
- Located at the corner of Forest Avenue & Glen Forest Drive with easy access to I-64
- Quick access from Henrico Doctors (0.7 miles) & St. Mary's Hospitals (2.1 miles)
- Full-service leases, call agent for rate



AVAILABLE

694 RSF available / 3rd FLOOR LOBBY
5,036 RSF available / 3rd FLOOR LOBBY



CONTACT US

MATT HAMILTON

Senior Vice President
+1 804 401 4005
matt.hamilton@cbre.com

CHRIS WALLACE

Senior Vice President
+1 804 401 4001
chris.wallace@cbre.com

ANDREW FERGUSON

Senior Vice President
+1 804 401 4004
andrew.ferguson@cbre.com

CBRE

1802 Bayberry Court
Suite 201
Richmond, VA 23226

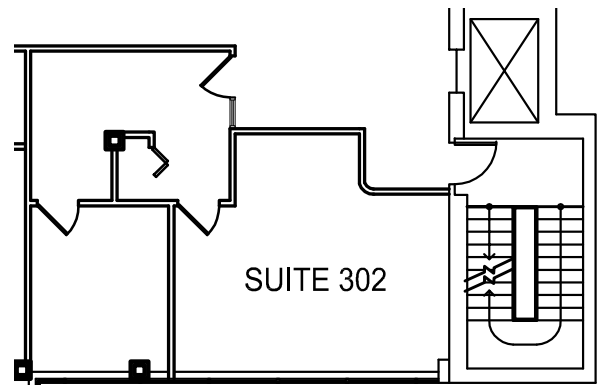
www.cbre.us/richmond

CBRE

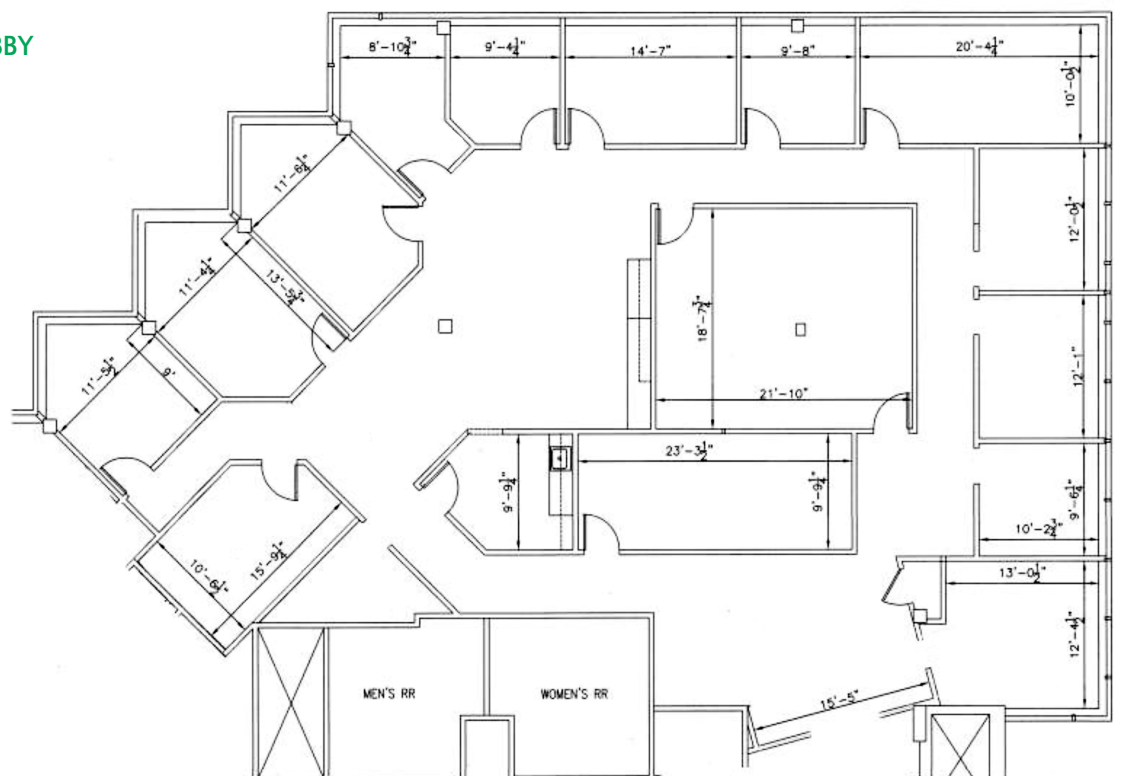
FOR LEASE / OFFICE / FOREST PLAZA I 7201 GLEN FOREST DRIVE

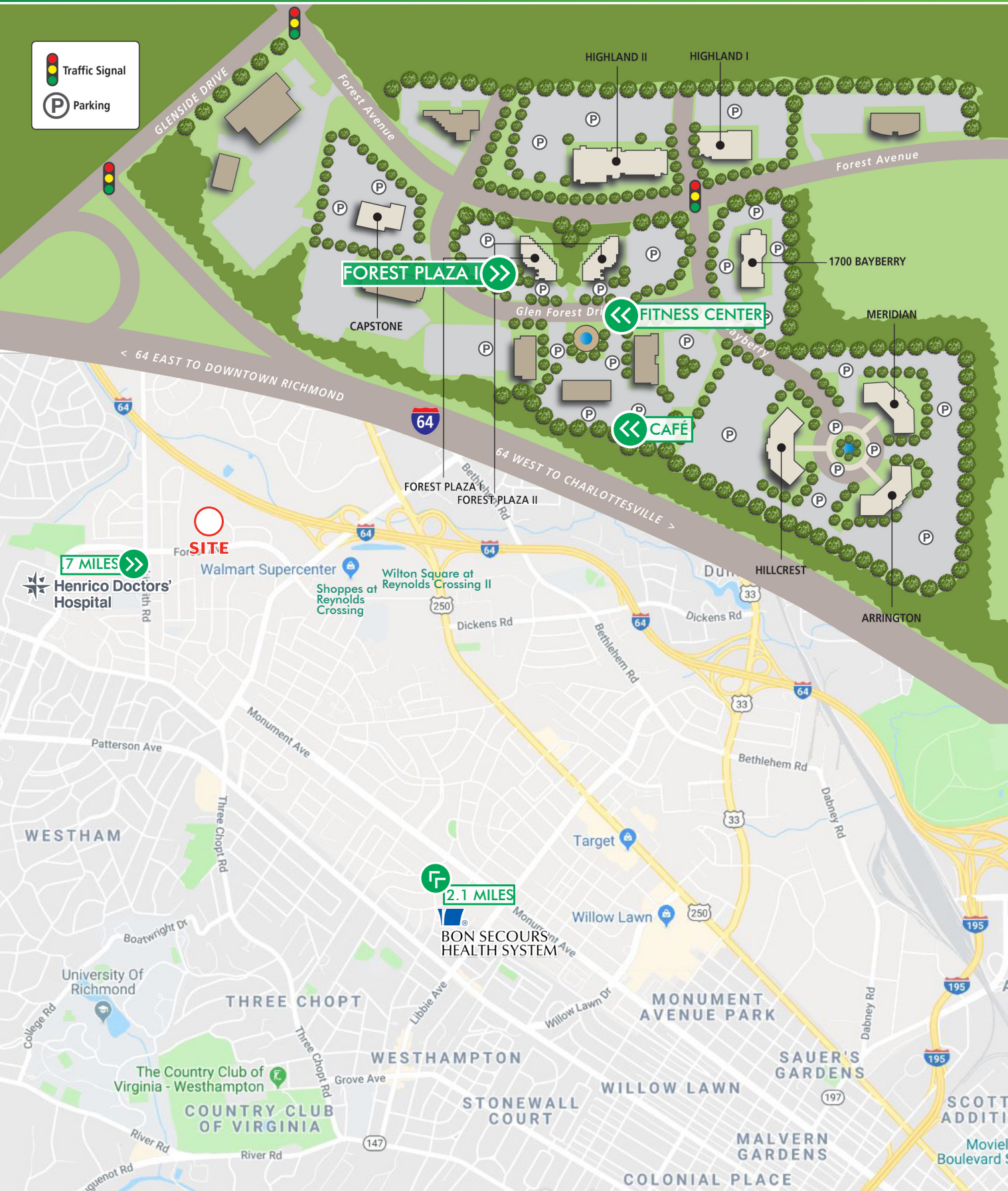


694 RSF / 3rd floor LOBBY



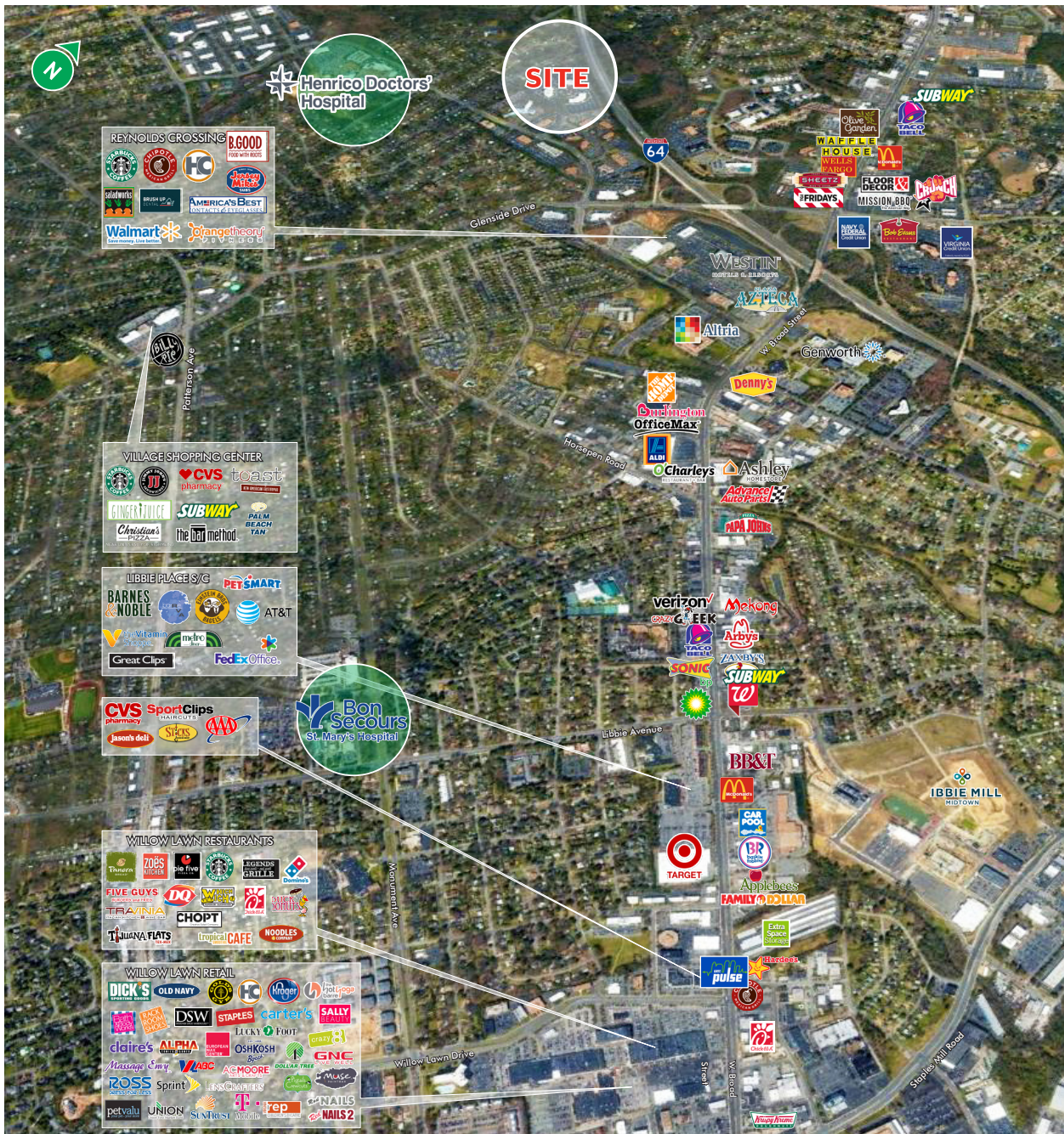
5,036 RSF / 3rd floor LOBBY





FOR LEASE / OFFICE / FOREST PLAZA I 7201 GLEN FOREST DRIVE

RICHMOND, VA 23226



© 2019 CBRE, Inc. All rights reserved. This information has been obtained from sources believed reliable, but has not been verified for accuracy or completeness. You should conduct a careful, independent investigation of the property and verify all information. Any reliance on this information is solely at your own risk. CBRE and the CBRE logo are service marks of CBRE, Inc. All other marks displayed on this document are the property of their respective owners, and the use of such logos does not imply any affiliation with or endorsement of CBRE. Photos herein are the property of their respective owners. Use of these images without the express written consent of the owner is prohibited.