

1701

n graham street

CHARLOTTE, NC

10,868 SF
FOR SUBLEASE



CBRE



SPACE HIGHLIGHTS



Sublease expires
June 30, 2028



10,868 SF
available



Call for pricing



Free parking



Plug & play space with
furniture available



Access to all of Camp North
End's great amenities including:
- Walkable food & beverage
- Tenant rooftop lounge

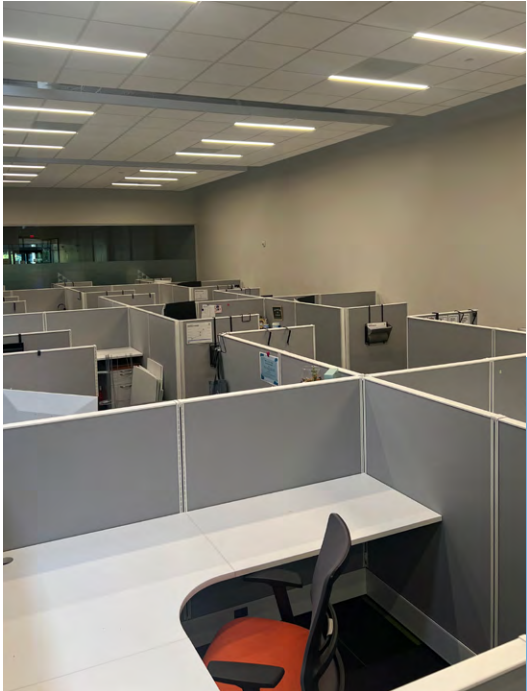
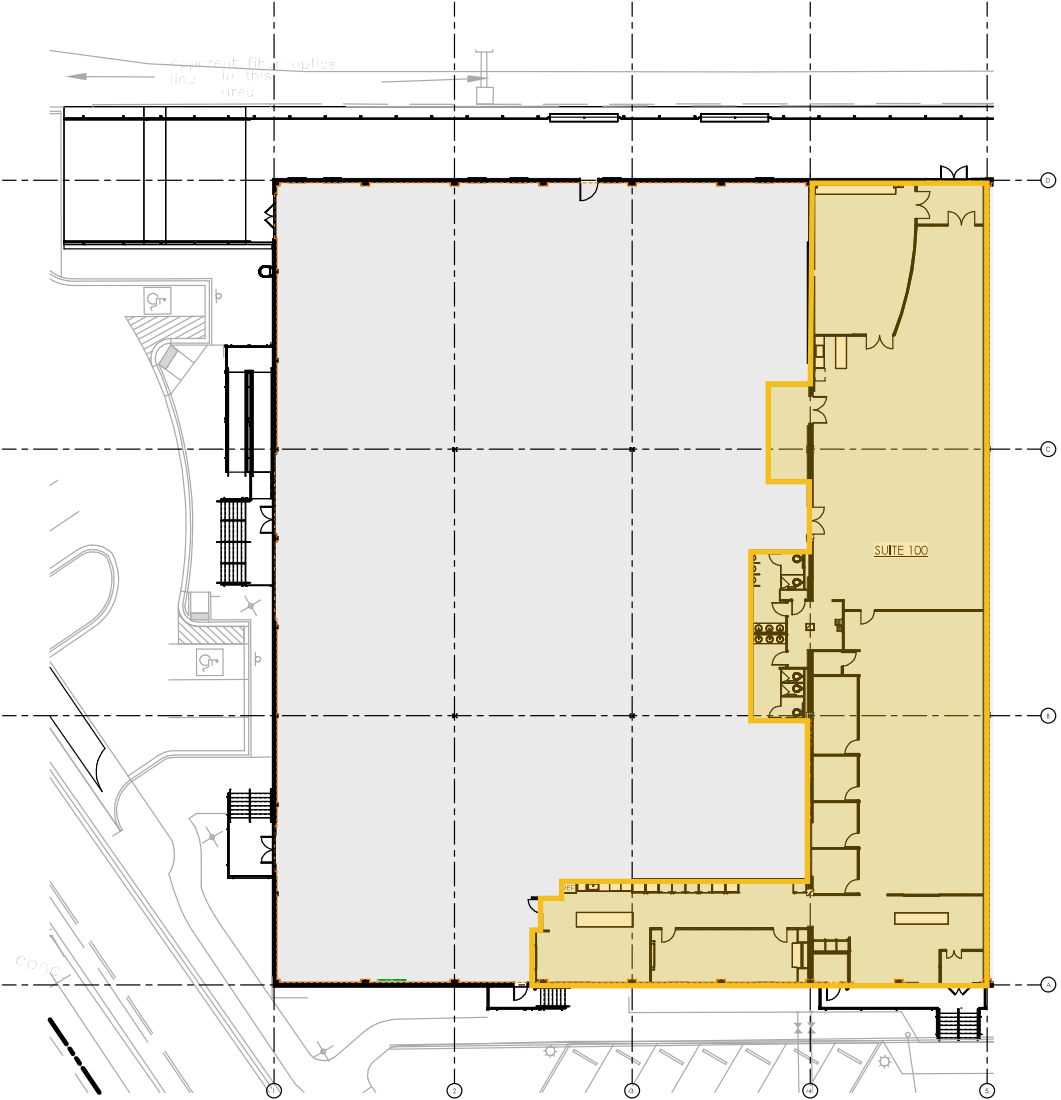


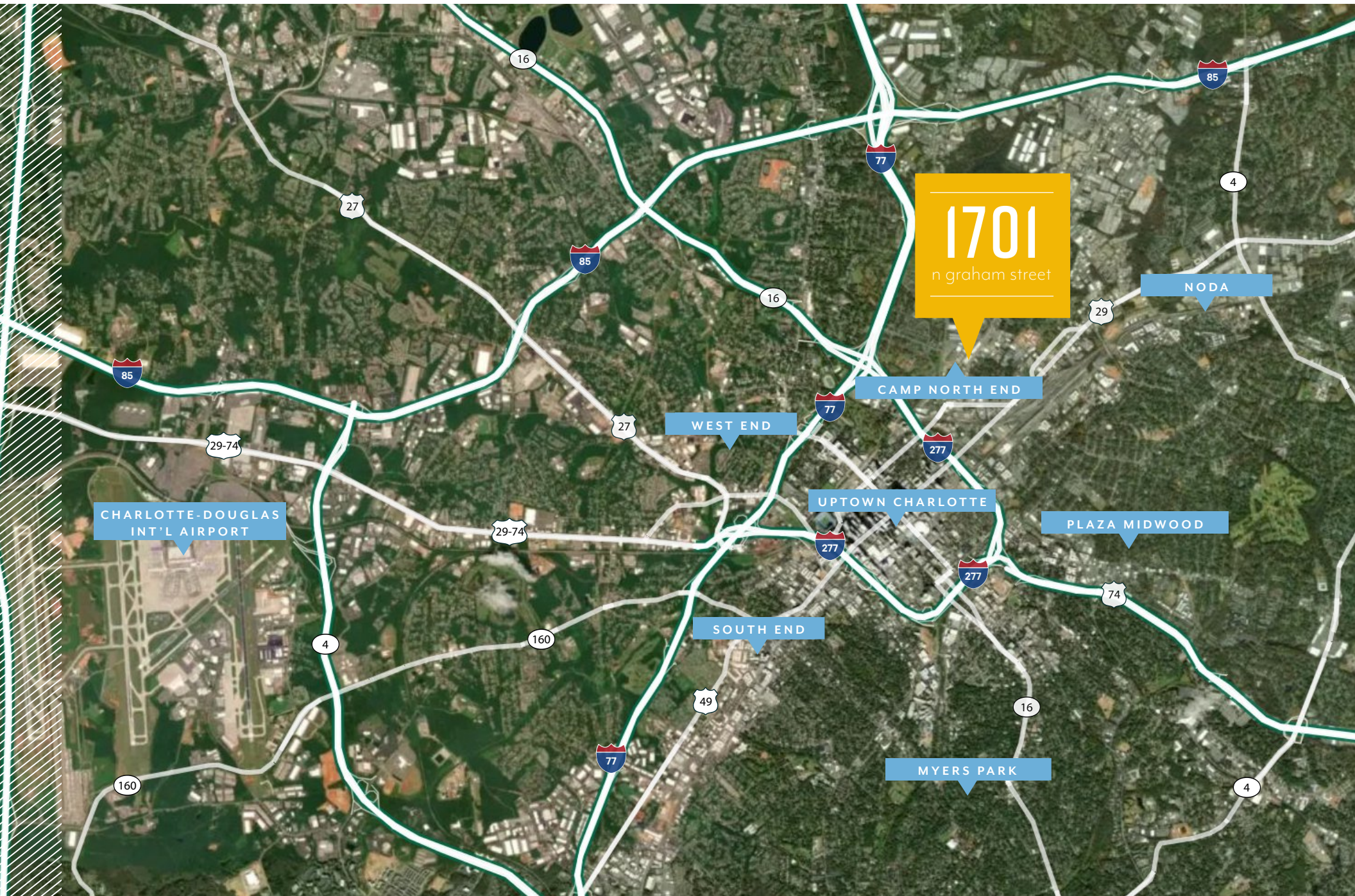
Available
immediately

*Plug & play office space in
Camp North End.*

FLOOR PLAN

10,868 SF





1701
n graham street

CHARLOTTE-DOUGLAS
INT'L AIRPORT

WEST END

CAMP NORTH END

UPTOWN CHARLOTTE

SOUTH END

MYERS PARK

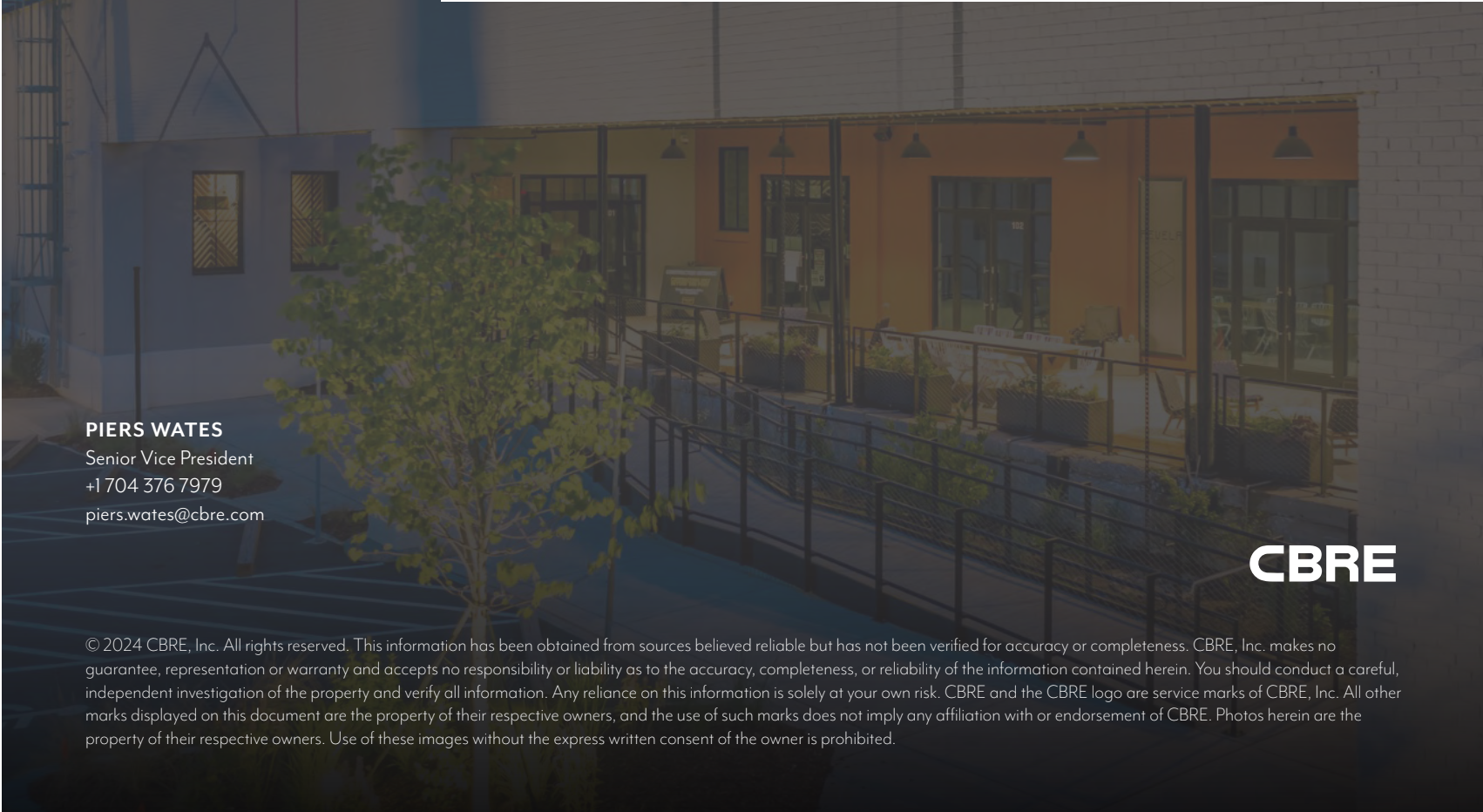
PLAZA MIDWOOD

NODA

1701

n graham street

CHARLOTTE, NC



PIERS WATES

Senior Vice President

+1 704 376 7979

piers.wates@cbre.com

CBRE

© 2024 CBRE, Inc. All rights reserved. This information has been obtained from sources believed reliable but has not been verified for accuracy or completeness. CBRE, Inc. makes no guarantee, representation or warranty and accepts no responsibility or liability as to the accuracy, completeness, or reliability of the information contained herein. You should conduct a careful, independent investigation of the property and verify all information. Any reliance on this information is solely at your own risk. CBRE and the CBRE logo are service marks of CBRE, Inc. All other marks displayed on this document are the property of their respective owners, and the use of such marks does not imply any affiliation with or endorsement of CBRE. Photos herein are the property of their respective owners. Use of these images without the express written consent of the owner is prohibited.