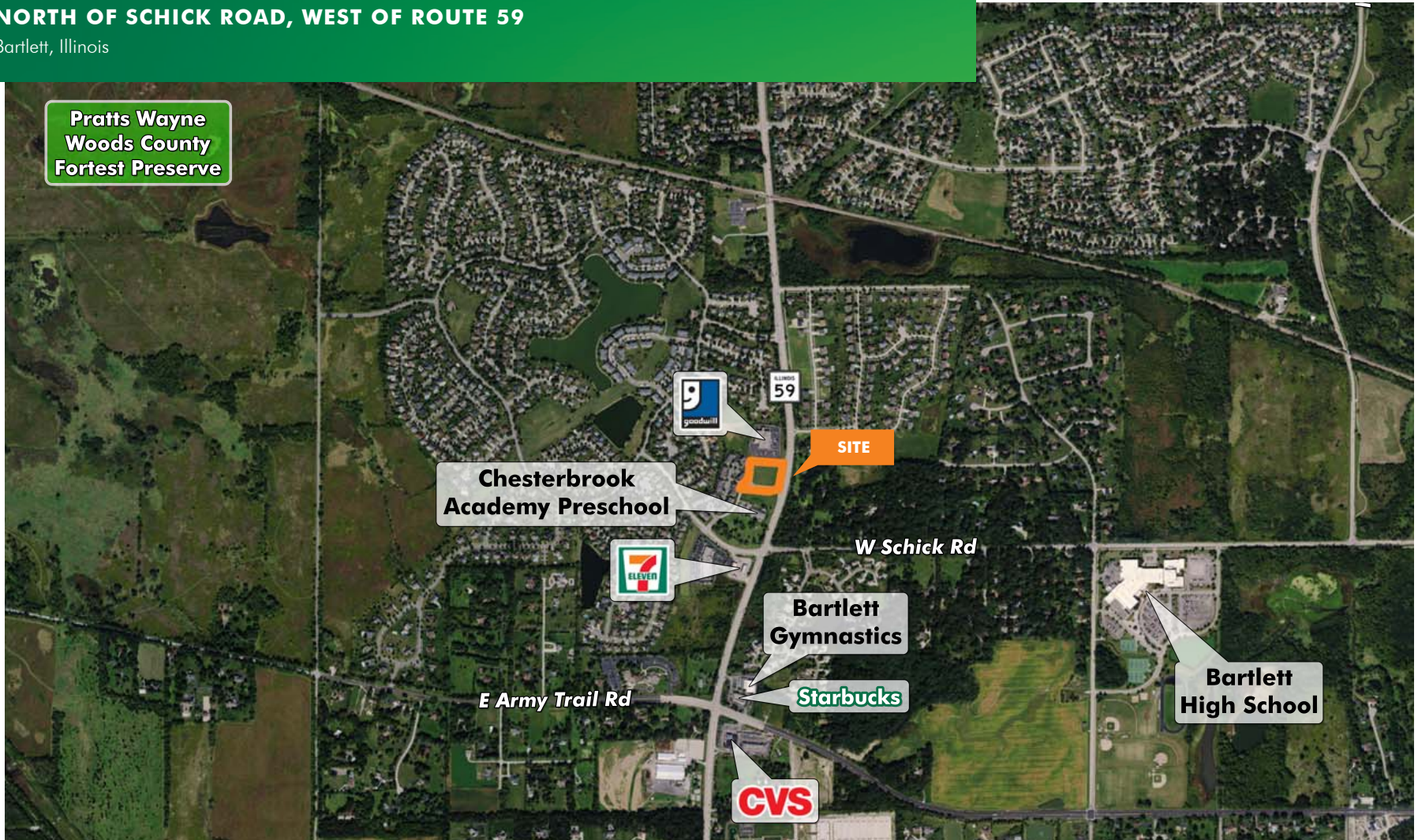


FOR SALE

DEVELOPMENT OPPORTUNITY

NORTH OF SCHICK ROAD, WEST OF ROUTE 59

Bartlett, Illinois



www.cbre.us/lsgoakbrook

CBRE

FOR SALE DEVELOPMENT OPPORTUNITY

NORTH OF SCHICK ROAD,
WEST OF ROUTE 59

Bartlett, Illinois

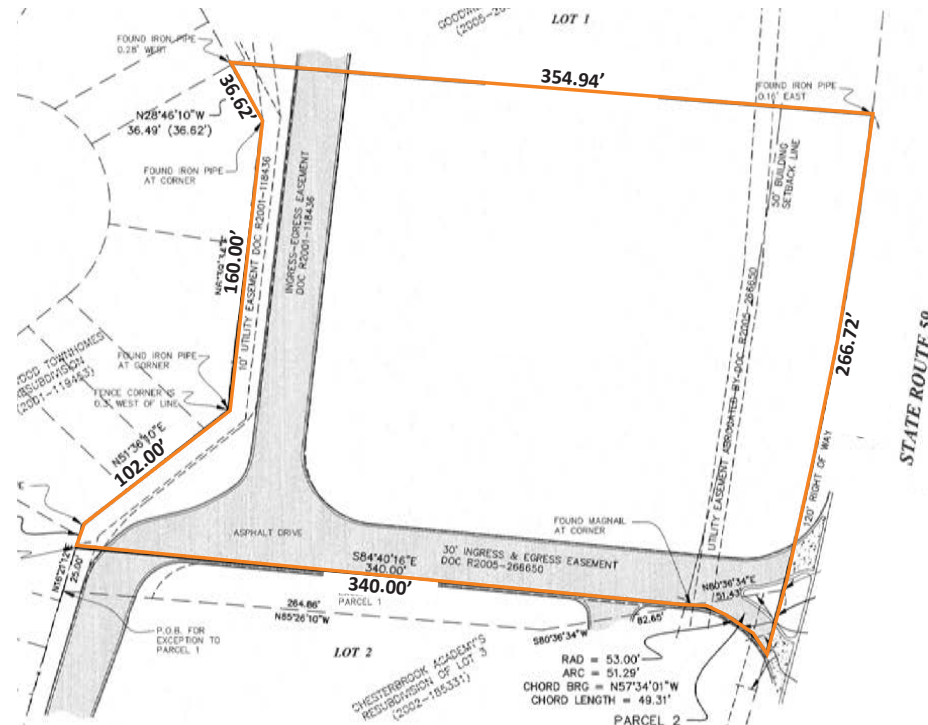


PROPERTY HIGHLIGHTS

- + ± 2.04 acres
- + Currently Zoned PD-Planned Development District, and planned for non-residential uses
- + Located approximately 35 miles northwest of downtown Chicago
- + Traffic Counts:
38,100 vehicles per day on Route 59
- + Parcel Number: 01-16-203-092
- + Taxes: \$11,496.76
- + Asking \$7.00 psf
- + Please call for additional information



PLAT OF SURVEY



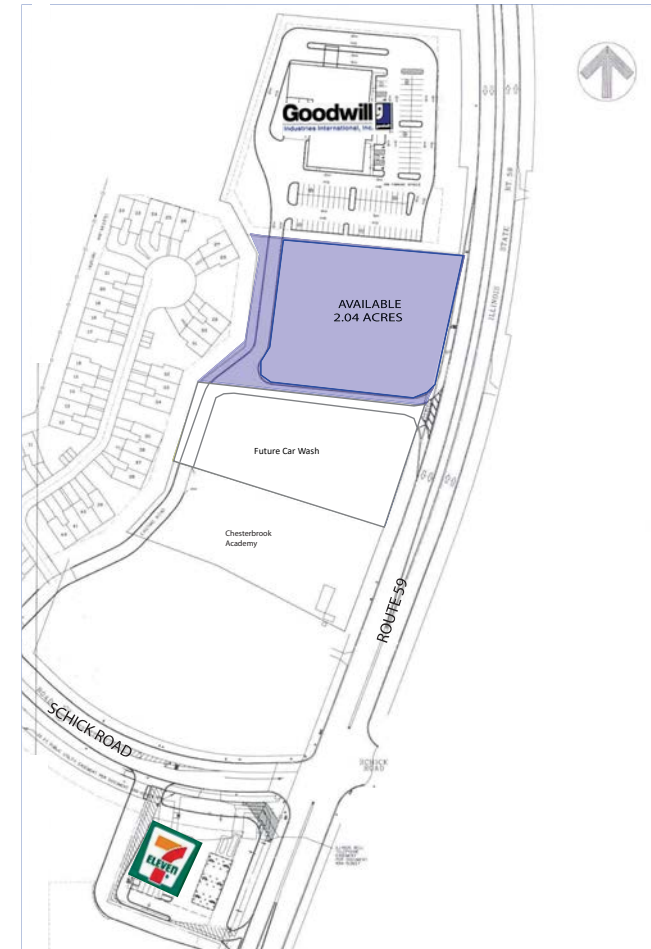
www.cbre.us/lsgoakbrook

CBRE

FOR SALE DEVELOPMENT OPPORTUNITY

**NORTH OF SCHICK ROAD,
WEST OF ROUTE 59**
Bartlett, Illinois

 **FLOODPLAIN/WETLAND AERIAL AND
AREA LOCATION MAP**



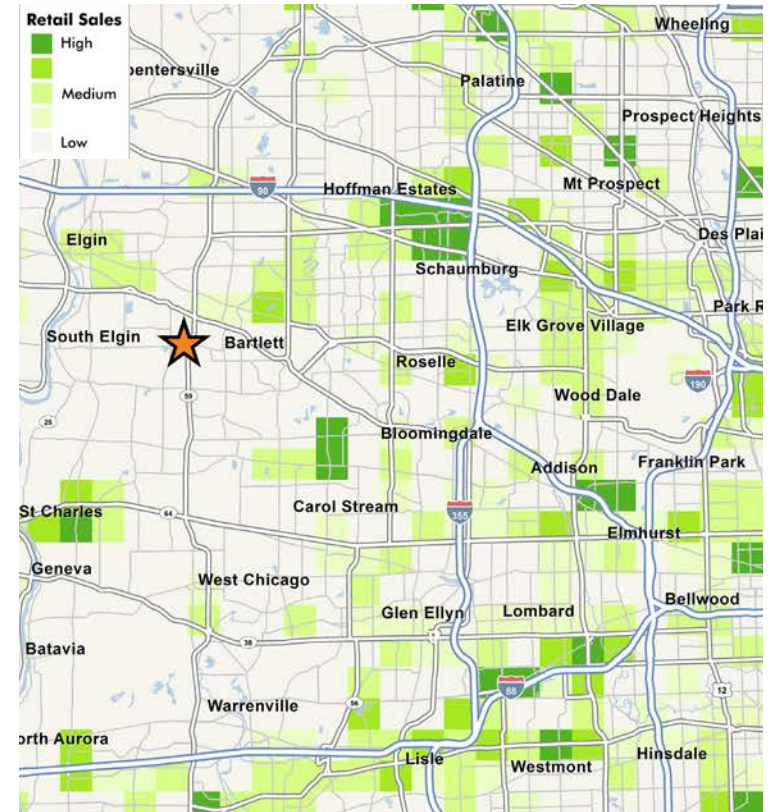
www.cbre.us/lsgoakbrook

CBRE

FOR SALE DEVELOPMENT OPPORTUNITY

**NORTH OF SCHICK ROAD,
WEST OF ROUTE 59**
Bartlett, Illinois

DEMOGRAPHIC SNAPSHOT	3 MILES	5 MILES	7 MILES
Population	78,942	220,367	410,387
Average Household Income	\$101,357	\$95,285	\$97,785
Average Housing Value	\$276,696	\$263,179	\$279,867



CONTACT US

TONY GANGE

Executive Vice President
+1 630 573 7030
tony.gange@cbre.com

© 2020 CBRE, Inc. All rights reserved. This information has been obtained from sources believed reliable, but has not been verified for accuracy or completeness. You should conduct a careful, independent investigation of the property and verify all information. Any reliance on this information is solely at your own risk. CBRE and the CBRE logo are service marks of CBRE, Inc. All other marks displayed on this document are the property of their respective owners. Photos herein are the property of their respective owners. Use of these images without the express written consent of the owner is prohibited.

www.cbre.us/lsgoakbrook

CBRE