

# 110 GREENWICH STREET

SW CORNER OF GREENWICH & CARLISLE STREETS | FDI

RETAIL STORE FOR LEASE

# 110 GREENWICH STREET

SW CORNER OF GREENWICH & CARLISLE STREETS | FIDI

## PROPERTY DETAILS:

SIZE:	4,500 SF Ground Floor 900 SF Lower Level
FRONTAGE:	141' wraparound
CEILING HEIGHT:	12'
POSSESSION:	Immediate
ASKING RENT:	Upon Request

## HIGHLIGHTS:

- Situated at the base of a fully-amenitized luxury residential building with 60 units
- Adjacent to world-renowned architect Rafael Vinoly's latest masterpiece and supretall residential tower, The Greenwich, with 272 units
- Surrounded by multiple subway lines including The Fulton Center and World Trade Center transportation hubs
- Within walking distance to global fashion labels, indoor malls (*Brookfield Place, Westfield, South Street Seaport*), and food halls
- Neighboring tenants:



All information supplied in this marketing presentation and/or flyer is from sources deemed reliable and is furnished subject to errors, omissions, modifications, removal of listings from sale/lease and to any listing condition. Any square footage, dimensions, floor plans and/or technical data set forth are approximations and are subject to further elaboration/confirmation.

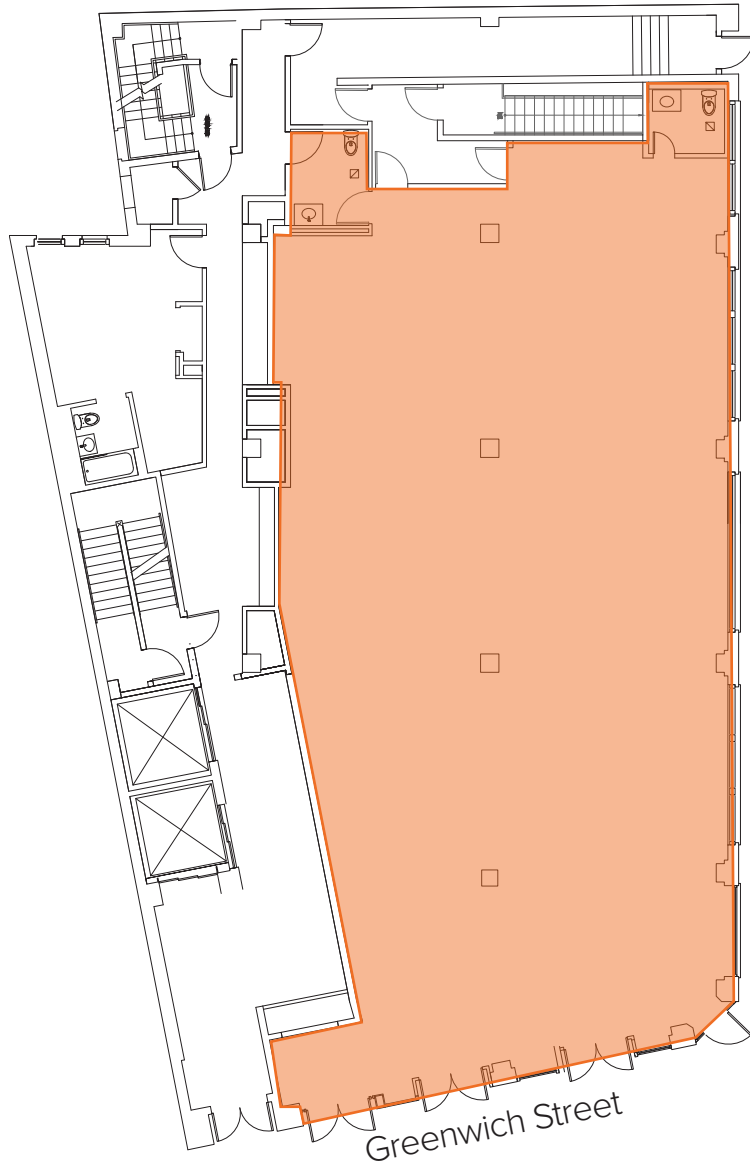


# 110 GREENWICH STREET

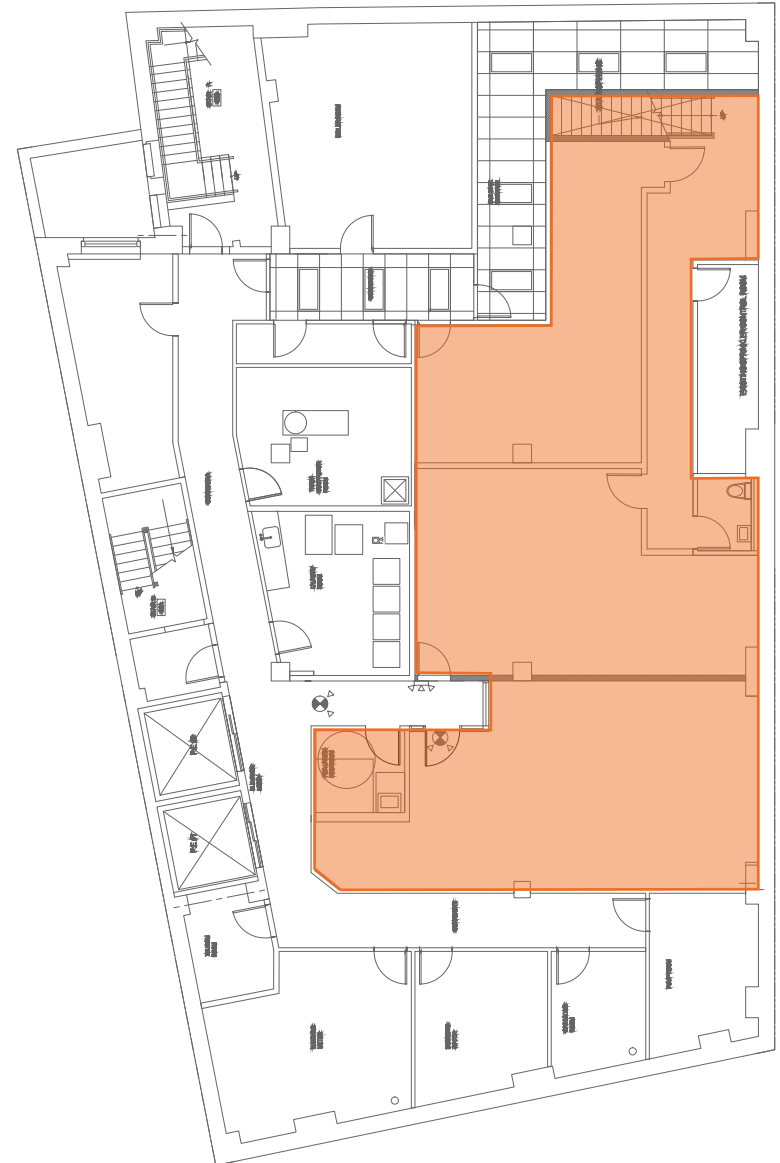
SW CORNER OF GREENWICH & CARLISLE STREETS | FIDI

Floor Plans: Single User Plan

Ground Floor: 4,500 SF



Lower Level: 900 SF

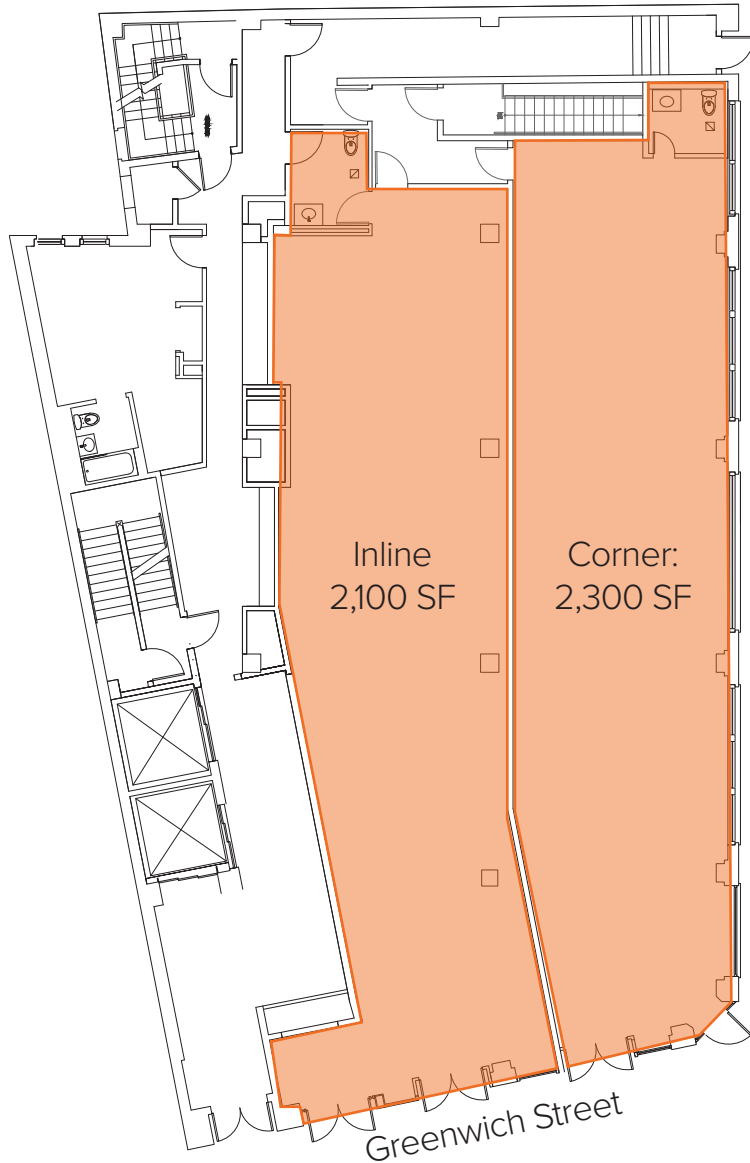


# 110 GREENWICH STREET

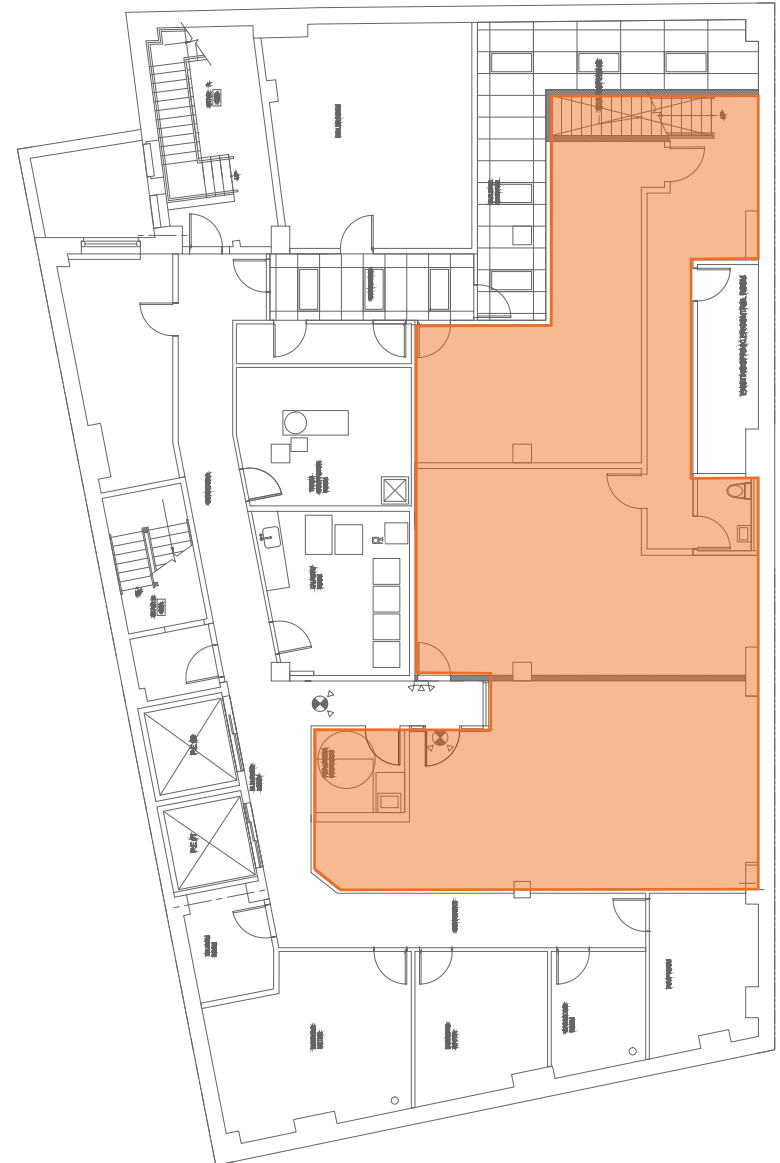
SW CORNER OF GREENWICH & CARLISLE STREETS | FIDI

Floor Plans: Potential Divisions

Ground Floor: 4,500 SF total



Lower Level: 900 SF



# 110 GREENWICH STREET

SW CORNER OF GREENWICH & CARLISLE STREETS | FIDI

FOR MORE INFORMATION,  
PLEASE CONTACT:

**SOPHIA GAINES**

917.902.6352 | [SGaines@ksrny.com](mailto:SGaines@ksrny.com)

**MARC SITT**

917.531.0238 | [MSitt@ksrny.com](mailto:MSitt@ksrny.com)

**ALBERT MANOPLA**

212.380.8369 | [AManopla@ksrny.com](mailto:AManopla@ksrny.com)

