

# OFFICE SPACE FOR LEASE



**MAITLAND GREEN I**  
601 S. Lake Destiny Drive  
Maitland, FL 32751

Maitland Green I is a 4-story Class A office building with approximately 111,000 RSF and available space ranging from 2,019-16,827 RSF.

Located in the highly desirable Maitland Center Office Park, this corporate building provides efficient office suites.

**CLASS A  
OFFICE SPACE**

Space Available  
**2,019-16,827 RSF**

Total Space Available  
**31,996 RSF**

[Virtual Tour](#)

[Drone Video](#)



For more information, contact:  
[Damien Madsen](#)  
(407) 256.2844  
DMadsen@harbertrealty.com

[Josh Smith](#)  
(407) 377.4050  
JSmith@harbertrealty.com

Property Owned &  
Operated by:



## SPACE AVAILABLE

Suite	RSF
100A	7,149*
100B	6,001*
400	16,827**
400A	7,505**
400B	3,567**
400C	5,755**

\* Suites can be combined for 13,150 RSF

\*\* Available 10/1/2024



## BUILDING FEATURES & AMENITIES

- 111,000 RSF Class A 4-Story Building
- On-Site Institutional Property Management
- 4/1000 Parking Ratio
- On-Site Building Cafe
- **New Building Feature: Advanced and Targeted Cleanings of Common Area Spaces**
- Large Centrally Located Courtyard for Collaborative Distancing Area



For more information, contact:  
**Damien Madsen**  
 (407) 256.2844  
 DMadsen@harbertrealty.com

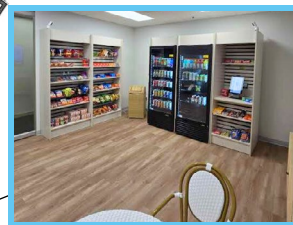
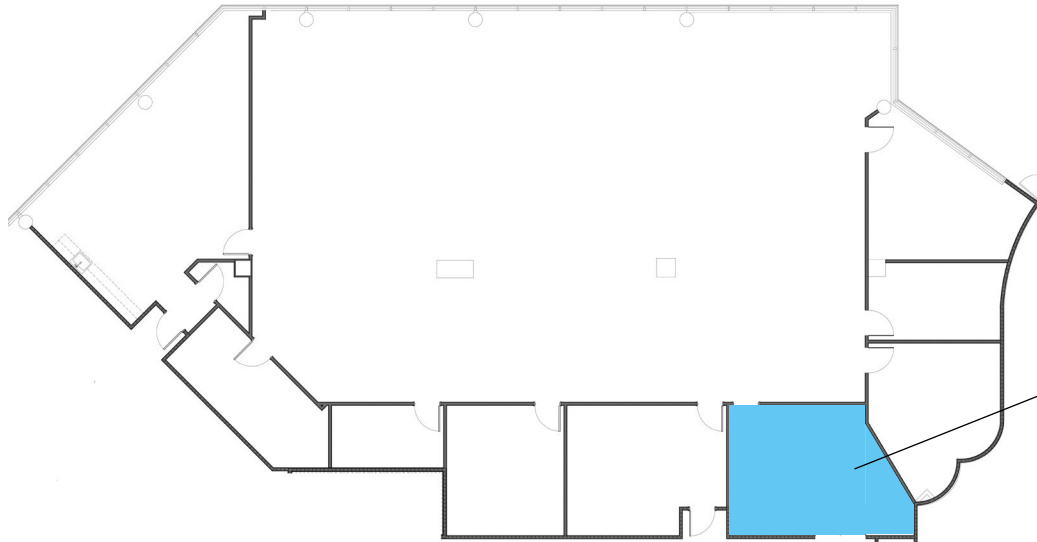
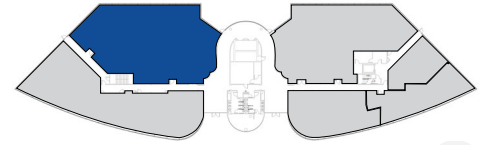
**Josh Smith**  
 (407) 377.4050  
 JSmith@harbertrealty.com

Property Owned &  
 Operated by:



1st Floor

Suite 100A: 7,149 RSF\*



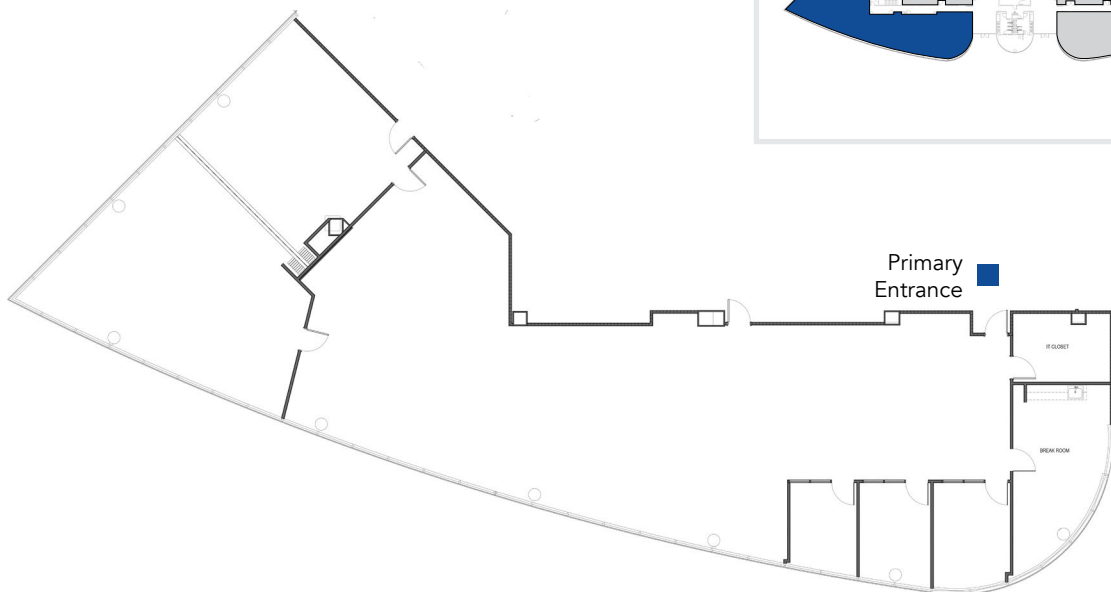
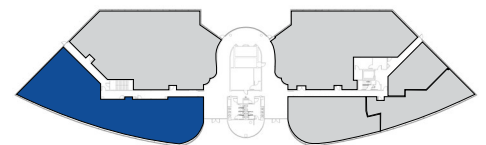
Grab-and-Go Station

Primary Entrance

\* Suites can be combined for 13,150 RSF

1st Floor

Suite 100B: 6,001 RSF\*



Primary Entrance

For more information, contact:  
**Damien Madsen**  
(407) 256.2844  
DMadsen@harbertrealty.com

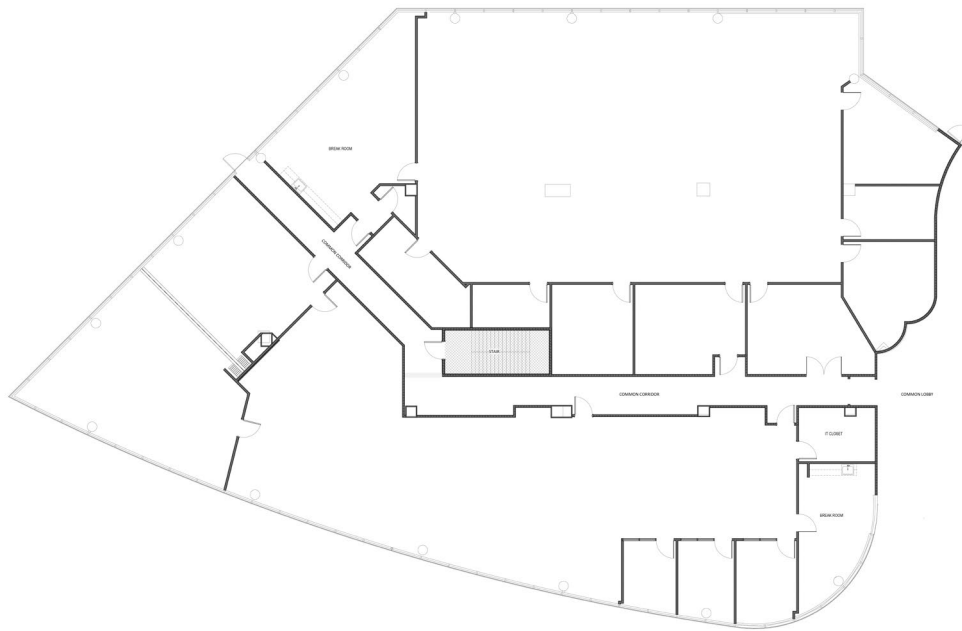
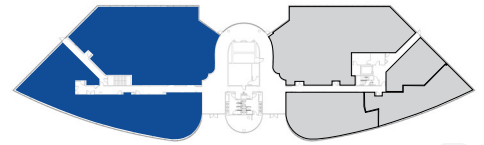
**Josh Smith**  
(407) 377.4050  
JSmith@harbertrealty.com

Property Owned &  
Operated by:



1st  
Floor

Suite 100: 13,150 RSF



For more information, contact:  
[Damien Madsen](#)  
(407) 256.2844  
DMadsen@harbertrealty.com

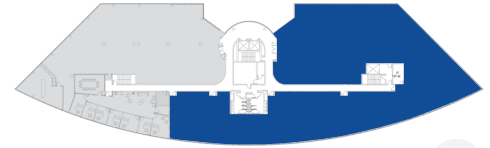
[Josh Smith](#)  
(407) 377.4050  
JSmith@harbertrealty.com

Property Owned &  
Operated by:



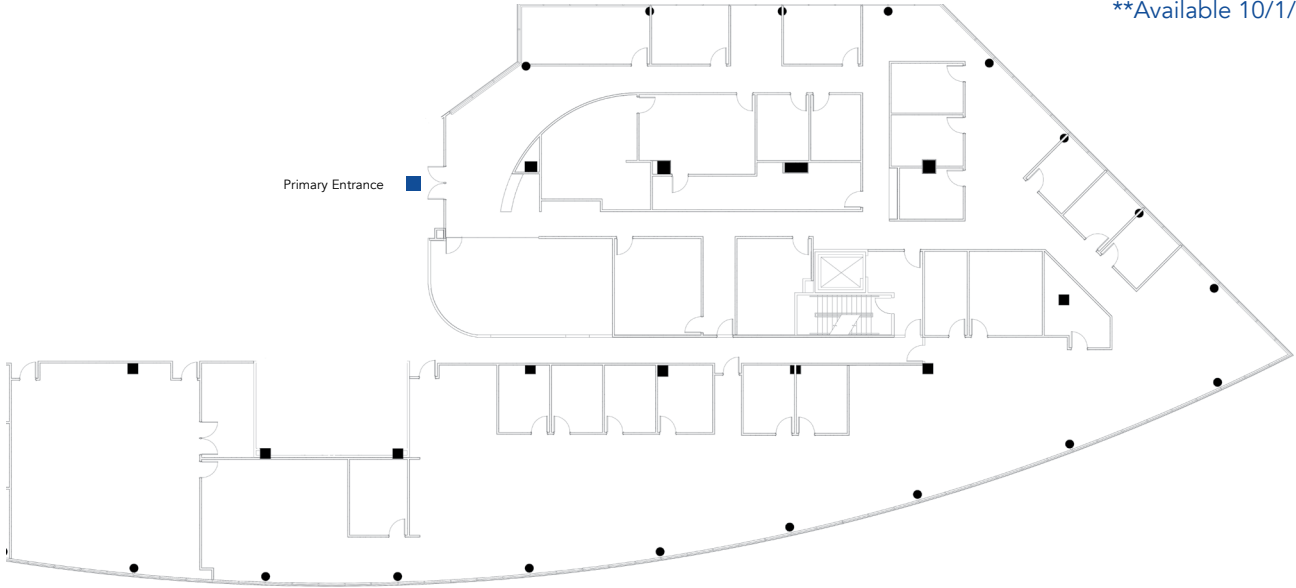
4th  
Floor

Suite 400: 16,827 RSF\*\*



\*\*Available 10/1/2024

Primary Entrance



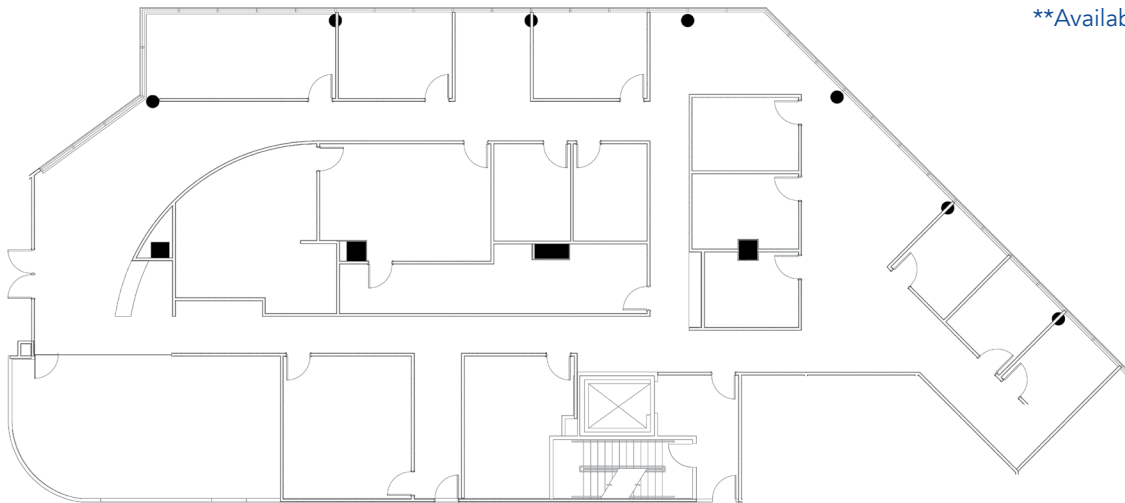
4th  
Floor

Suite 400A: 7,505 RSF\*\*



\*\*Available 10/1/2024

Primary Entrance



For more information, contact:  
**Damien Madsen**  
(407) 256.2844  
DMadsen@harbertrealty.com

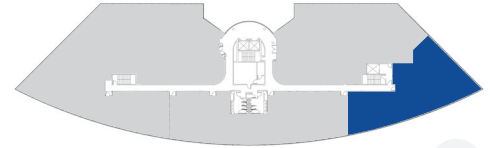
**Josh Smith**  
(407) 377.4050  
JSmith@harbertrealty.com

Property Owned &  
Operated by:

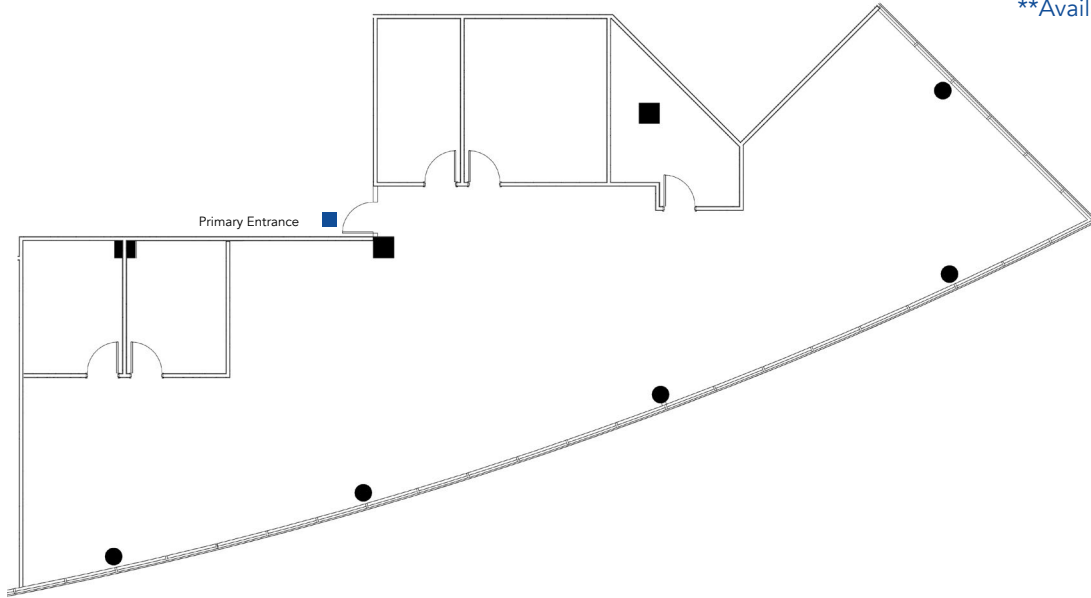


4th  
Floor

Suite 400B: 3,567 RSF\*\*

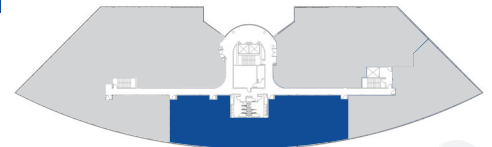


\*\*Available 10/1/2024

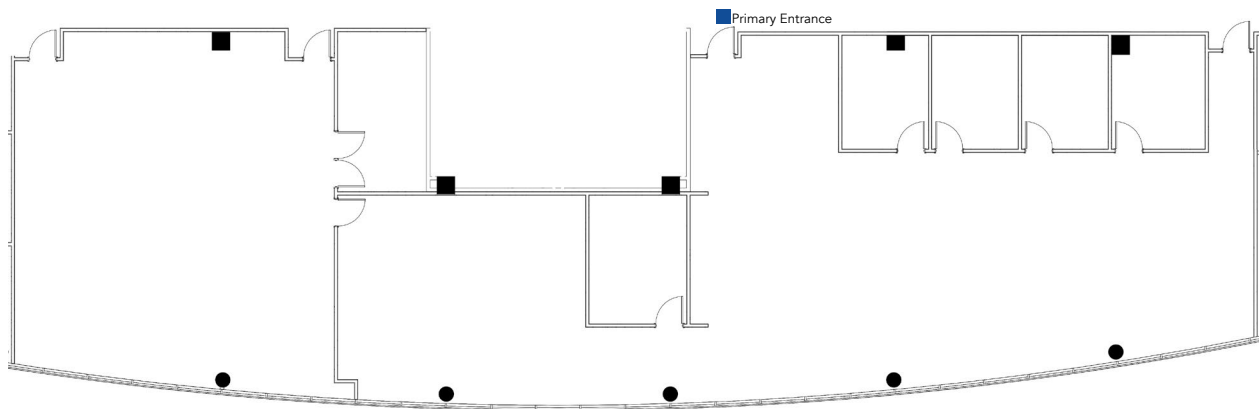


4th  
Floor

Suite 400C: 5,755 RSF\*\*



\*\*Available 10/1/2024

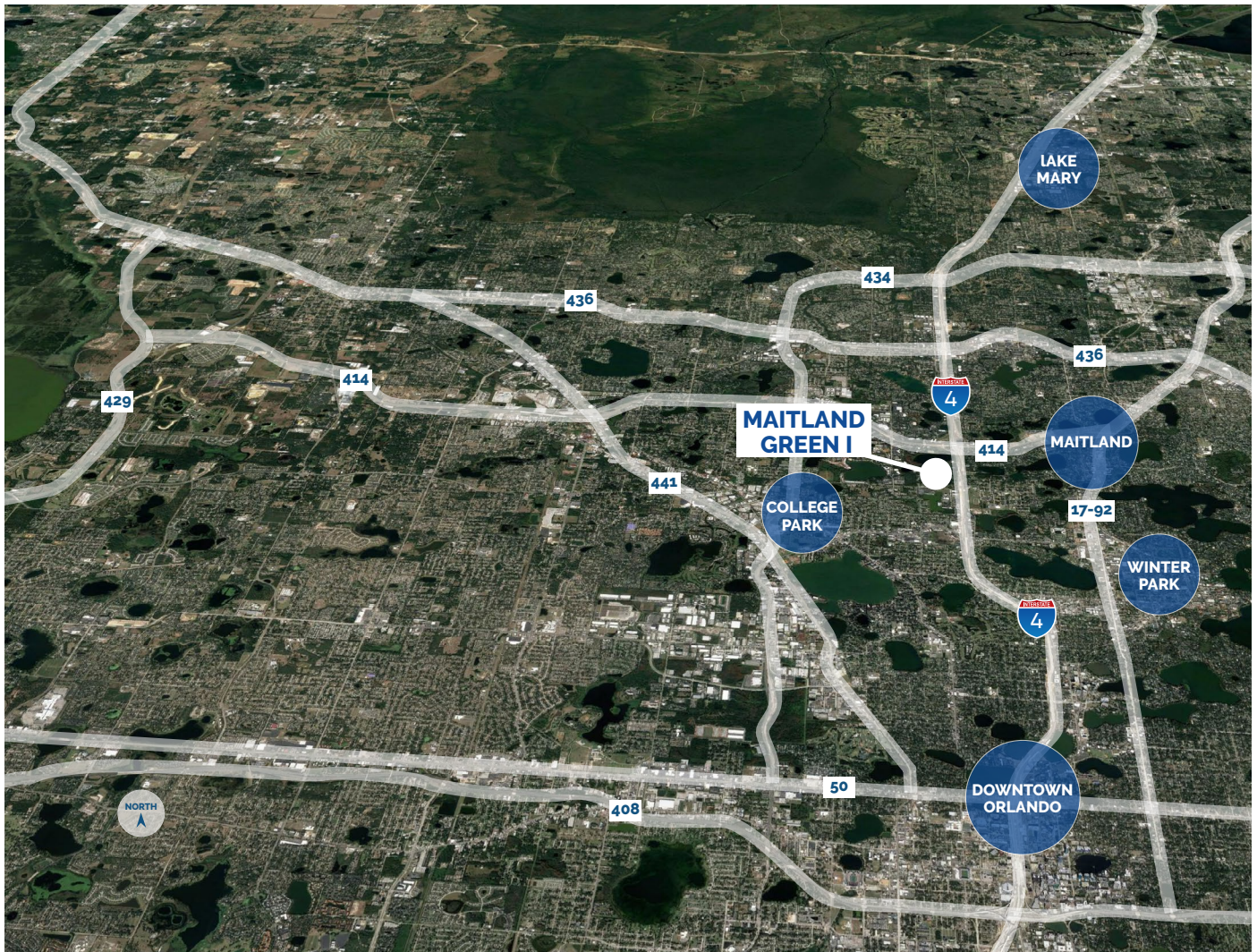


For more information, contact:  
**Damien Madsen**  
(407) 256.2844  
DMadsen@harbertrealty.com

**Josh Smith**  
(407) 377.4050  
JSmith@harbertrealty.com

Property Owned &  
Operated by:





## LOCATION HIGHLIGHTS

- Well-positioned within Maitland Center Office Park, one of Orlando's largest office submarkets
- Conveniently less than a half mile from I-4 & providing easy access to Downtown Orlando
- Close to business hotels, restaurants, retail and the RDV Sportsplex
- Ideally located in Central Florida's top executive housing market & the following established neighborhoods
 

- Maitland:	3-Miles
- Winter Park:	5-Miles
- College Park:	7-Miles
- Downtown:	8-Miles
- Lake Mary:	12-Miles

For more information, contact:  
**Damien Madsen**  
 (407) 256.2844  
 DMadsen@harbertrealty.com

**Josh Smith**  
 (407) 377.4050  
 JSmith@harbertrealty.com

Property Owned &  
 Operated by:

