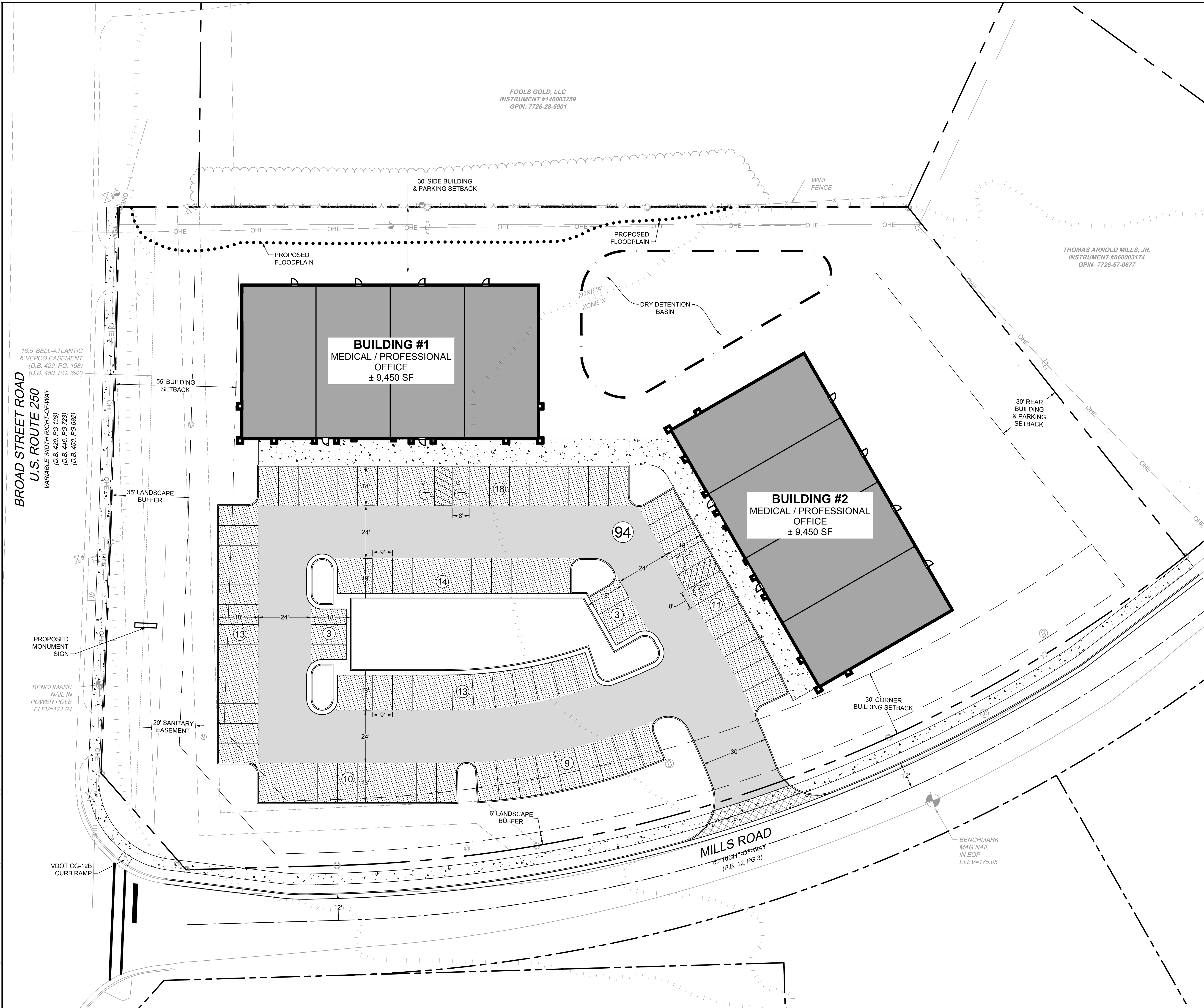


S:\03033035-Broad Mills\DWG\Sheet\CD303035C-3.0-SITE.dwg | Printed on 2/28/2020 4:38 PM | by Nick Nordberg



LAYOUT NOTES:

- ALL CONSTRUCTION AND MATERIALS SHALL BE IN ACCORDANCE WITH THE CURRENT VIRGINIA DEPARTMENT OF TRANSPORTATION ROAD AND BRIDGE SPECIFICATIONS AND GOOCHLAND COUNTY SPECIFICATIONS AND STANDARDS WHERE APPLICABLE.
- VDOT STANDARD DETAILS, AS REFERENCED, TO BE CONSTRUCTED IN ACCORDANCE WITH THE MOST RECENT VERSION OF VDOT "ROAD AND BRIDGE STANDARDS".
- ALL DIMENSIONS ARE FROM THE FACE OF CURB, UNLESS NOTED OTHERWISE.
- THE CONTRACTOR IS RESPONSIBLE FOR INSTALLING ALL STOP SIGNS, DIRECTIONAL SIGNS, AND STRIPING SHOWN ON THE PLANS.

SITE LEGEND:

- SIGN
- PROPOSED CURB & GUTTER
- PROPOSED FLUSH CURB
- PROPOSED STANDARD CURB
- DETECTABLE WARNING SURFACE

SIGN LEGEND:

- A** STOP SIGN (MUTCD STD R1-1)
- B** DISABLED PARKING SIGN (MUTCD R7-8)
- C** VAN ACCESSIBLE PARKING SIGN (MUTCD R7-8 & R7-8a)
- D** NO PARKING - FIRE LANE SIGN

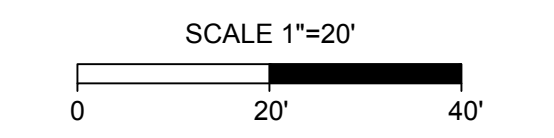
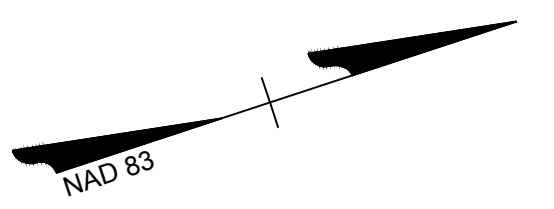
PAVEMENT MARKING LEGEND:

- 1** 4" SINGLE (SOLID) WHITE LINE
- 2** 24" WHITE STOP BAR
- 3** 4" WIDE YELLOW STRIPE, 4" FROM EDGE OF PAVEMENT (FIRE LANE)

- NOTES:**
- DO NOT PAINT INSIDE OF THE GUTTER PAN IN ANY AREA.
 - PAINT SHALL BE TYPE A, WATER EMULSION BASE, TRAFFIC PAINT CONFORMING TO THE REQUIREMENTS OF SECTION 704 OF THE VDOT ROAD AND BRIDGE SPECIFICATIONS AND FEDERAL SPECIFICATION TT-P-1952. COLOR SHALL BE WHITE UNLESS OTHERWISE INDICATED.
 - FIRE LANE SIGNAGE AND STRIPING TO MEET THE REQUIREMENTS OF THE LATEST EDITION OF THE MUTCD, THE INTERNATIONAL FIRE CODE, AND VDOT STANDARDS AND SPECIFICATIONS.
 - ALL PERMANENT PAVEMENT MARKINGS DISTRIBUTED BY CONSTRUCTION SHALL BE REPLACED BY THE CONTRACTOR IN-KIND, UNLESS OTHERWISE CALLED FOR IN THESE PLANS.
 - CONTRACTOR SHALL TIE ALL PROPOSED PAVEMENT MARKINGS TO EXISTING MARKINGS AT THE PROJECT LIMITS.

PAVEMENT LEGEND:

- DENOTES HEAVY DUTY PAVEMENT SECTION.
- DENOTES LIGHT DUTY PAVEMENT SECTION.
- DENOTES CONCRETE SIDEWALK SECTION.
- DENOTES HEAVY DUTY CONCRETE SECTION.



PRELIMINARY
NOT FOR CONSTRUCTION

THIS DRAWING PREPARED AT THE
CORPORATE OFFICE
100 Builders Parkway, Suite 300 | Richmond, VA 23225
TEL 804.200.0500 FAX 804.580.0106 www.timmons.com

YOUR VISION ACHIEVED THROUGH OURS.

REVISION DESCRIPTION	DATE

DATE: XX/XX/2020
DRAWN BY: N. NORDBERG
DESIGNED BY: B. DITZLER
CHECKED BY: B. DITZLER
SCALE: 1" = 20'

TIMMONS GROUP

BROAD MILLS OFFICE
DOVER MAGISTERIAL DISTRICT - GOOCHLAND COUNTY - VIRGINIA
SITE LAYOUT PLAN

JOB NO.	33035
SHEET NO.	C3.0

These plans and associated documents are the exclusive property of TIMMONS GROUP and may not be reproduced in whole or in part and shall not be used for any purpose whatsoever, inclusive, but not limited to construction, bidding, and/or construction staking without the express written consent of TIMMONS GROUP.