

21

UNIVERSITY PLACE



CORNER OF 8TH STREET AND UNIVERSITY PLACE
GREENWICH VILLAGE



SPACE A

SPACE B



21

UNIVERSITY PLACE

CORNER OF 8TH STREET & UNIVERSITY PLACE
GREENWICH VILLAGE

PROPERTY HIGHLIGHTS:

- All uses considered
- Formerly Capital One
- Venting in place
- Next to an NYU dorm and close proximity to the NYU campus
- Close to both Union Square & Washington Square Parks
- Neighboring tenants include: *Citibank, AT&T, Pret, Fresh & Co., Starbucks, McDonald's, Lids, Raising Cane's, Juice Generation, Foot Locker, Buffalo Exchange, T-Mobile, The Donut Pub, Dunkin', NYU, GNC, SLT*

SPACE A: 2,000 SF Ground Floor

SPACE B: 2,000 SF Ground Floor

FRONTAGE: Space A: 70' wraparound
Space B: 43'

CEILING HEIGHTS: 15'

POSSESSION: Immediate

TRANSPORTATION: 

CONTACT OUR BROKERS FOR MORE INFORMATION

DAVID GREEN
DGreen@ksrny.com
516.320.0260

DANIEL KESTENBAUM
DKestenbaum@ksrny.com
347.204.4935

ALBERT SALAMEH
ASalameh@ksrny.com
646.944.0797



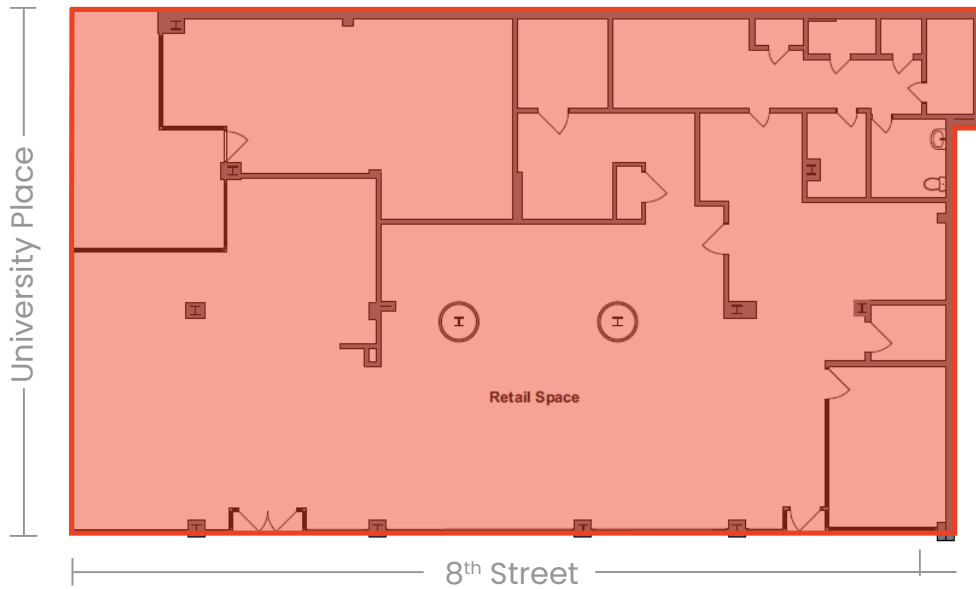
All information supplied in this marketing presentation and/or flyer is from sources deemed reliable and is furnished subject to errors, omissions, modifications, removal of listings from sale/lease and to any listing condition. Any square footage, dimensions, floor plans and/or technical data set forth are approximations and are subject to further elaboration/confirmation.



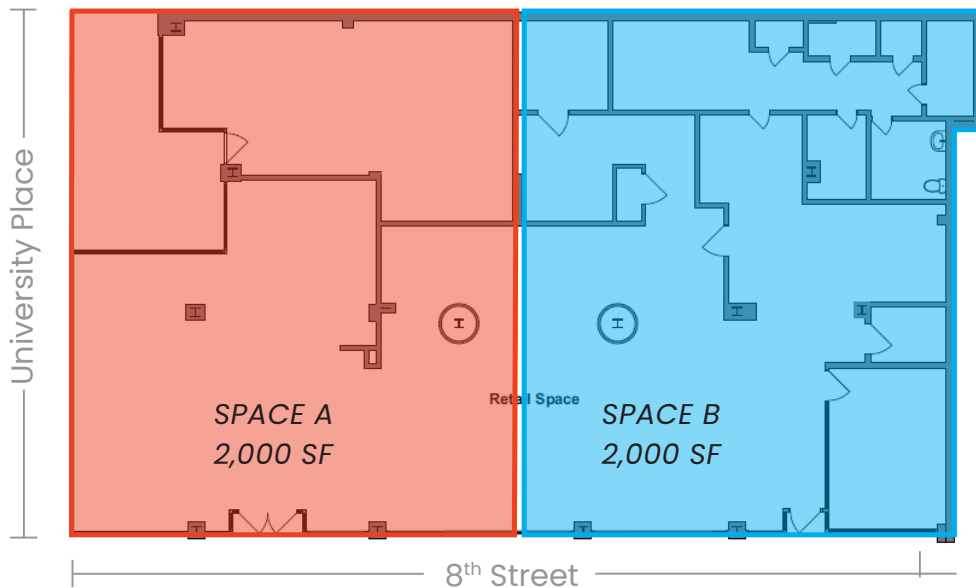
21 UNIVERSITY PLACE

CORNER OF 8TH STREET AND UNIVERSITY PLACE
GREENWICH VILLAGE

FLOOR PLAN (EXISTING CONDITION):



FLOOR PLAN (PROPOSED DIVISION):



CONTACT OUR BROKERS FOR MORE INFORMATION

DAVID GREEN	DANIEL KESTENBAUM	ALBERT SALAMEH
DGreen@ksrny.com	DKestenbaum@ksrny.com	ASalameh@ksrny.com
516.320.0260	347.204.4935	646.944.0797

ksr All information supplied in this marketing presentation and/or flyer is from sources deemed reliable and is furnished subject to errors, omissions, modifications, removal of listings from sale/lease and to any listing condition. Any square footage, dimensions, floor plans and/or technical data set forth are approximations and are subject to further elaboration/confirmation.