

# EAST INDUSTRIAL BAY

**LEE &  
ASSOCIATES**  
COMMERCIAL REAL ESTATE SERVICES



**FOR LEASE ±31,044 SF OFFICE/WAREHOUSE**

**6465 NATIONAL DRIVE , LIVERMORE, CA 94550**

LOCAL EXPERTISE. INTERNATIONAL REACH. WORLD CLASS.



PROPERTY HIGHLIGHTS



Property type: Office/Warehouse



Sprinkler Calcs: .60gpm/3000 sq ft



±31,044 SF



Fully Insulated



Clear Height: Min. 26'



Fully secured and gated yard



Power: Ample



Parking: 3.9/1,000



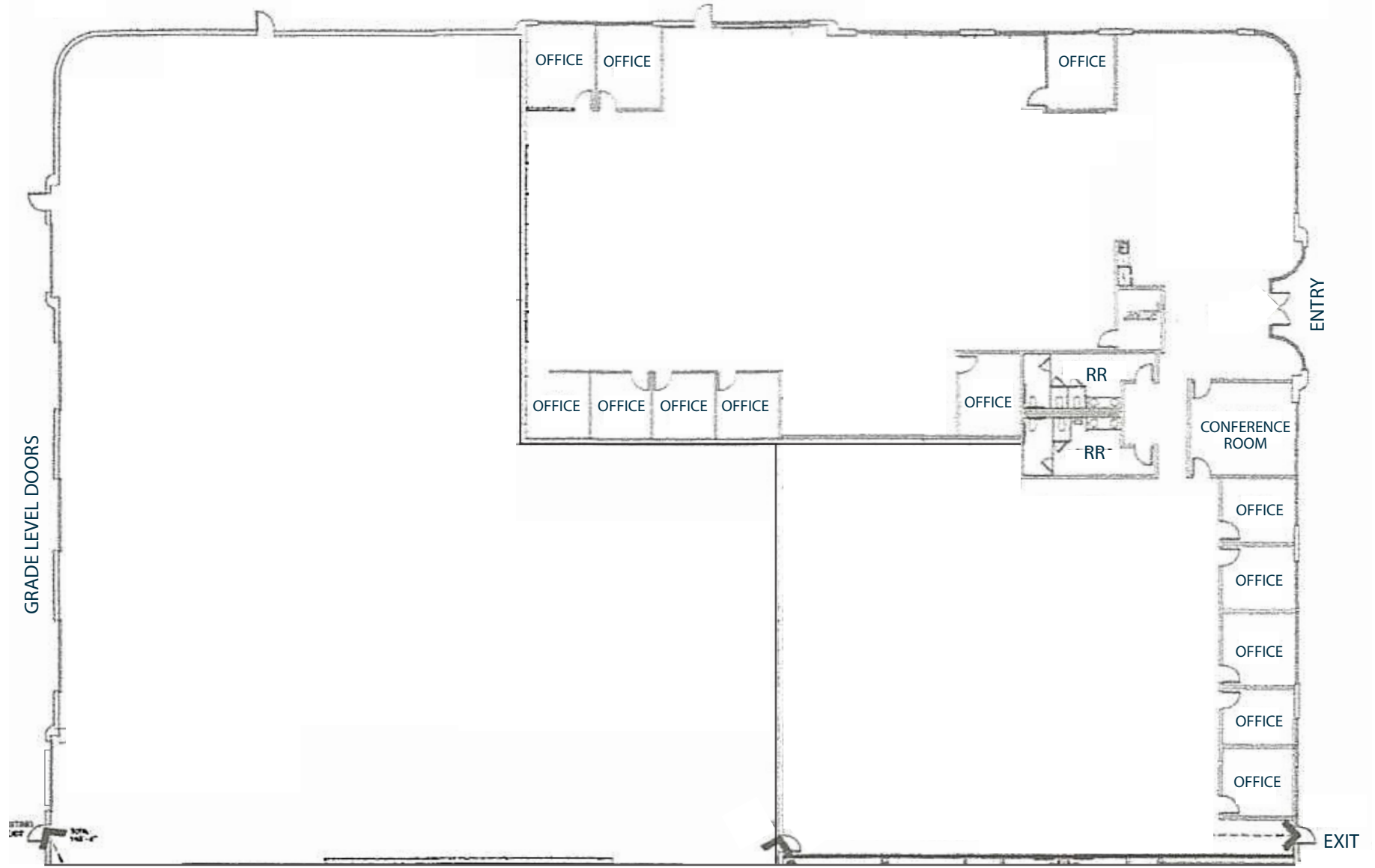
Five (5) Grade Level Doors



Lease rate:  
Call brokers for pricing

**6465**  
**NATIONAL DRIVE**

±31,044 SF



SITE PLAN

\*FLOORPLAN NOT TO SCALE

6465  
NATIONAL DRIVE



CUMULUS STREET

BRISIA STREET



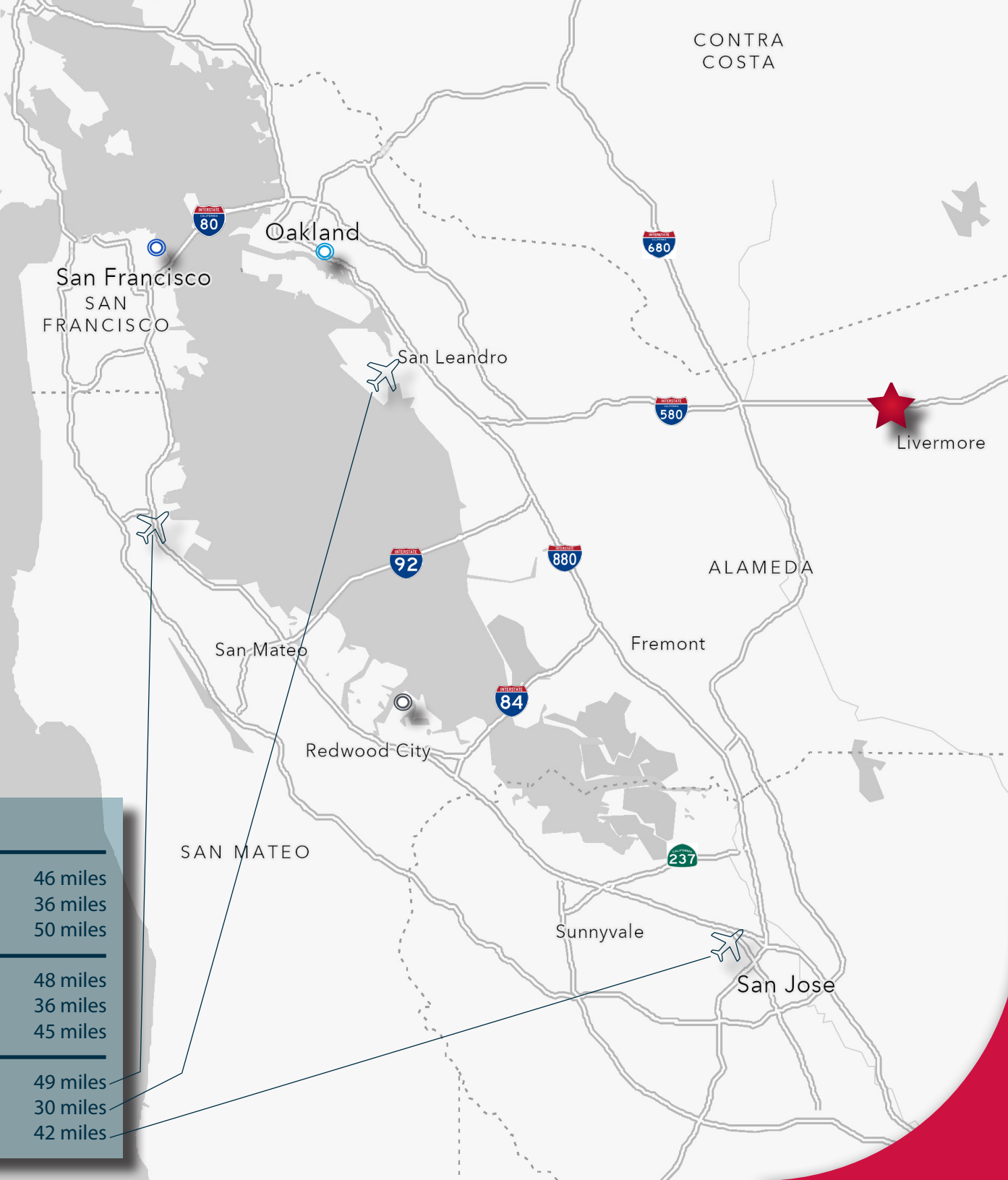
EXCHANGE COURT

NATIONAL DRIVE

# REGIONAL MAP

## DISTANCE FROM SITE ★

○ Port of San Francisco	46 miles
● Port of Oakland	36 miles
○ Port of Redwood City	50 miles
<hr/>	
San Francisco	48 miles
Oakland	36 miles
San Jose	45 miles
<hr/>	
San Francisco International (SFO) Airport	49 miles
Oakland International (OAK) Airport	30 miles
San Jose Mineta International (SJC) Airport	42 miles



# FOR LEASE

## ±31,044 SF OFFICE/WAREHOUSE

6465 NATIONAL DRIVE | LIVERMORE, CA 94550



Sean Offers, SIOR

Principal  
soffers@lee-associates.com  
925-737-4159  
LIC NO 01858116



Jessica Mauser

President  
jmauser@lee-associates.com  
925-737-4168  
LIC NO 01728720