

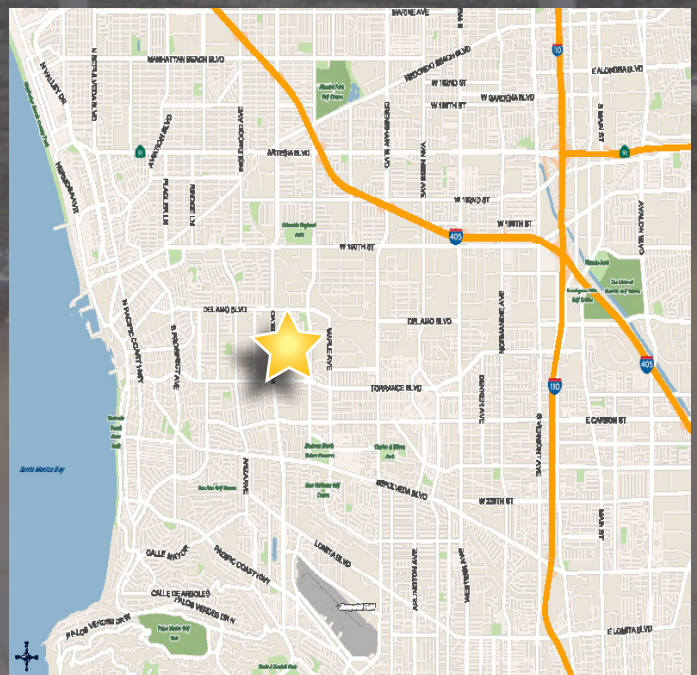


2610 Columbia Street Unit B Torrance, CA 90503

- Central Torrance Location
- Like New Building Exterior
- High efficiency LED Lighting in Warehouse
- Completely remodeled interior offices
- Upgraded ESFR sprinklers
- 2 DH / 1 GL Truck Doors
- Power - 200 Amps
- Professionally Owned & Managed by First Industrial Realty Trust

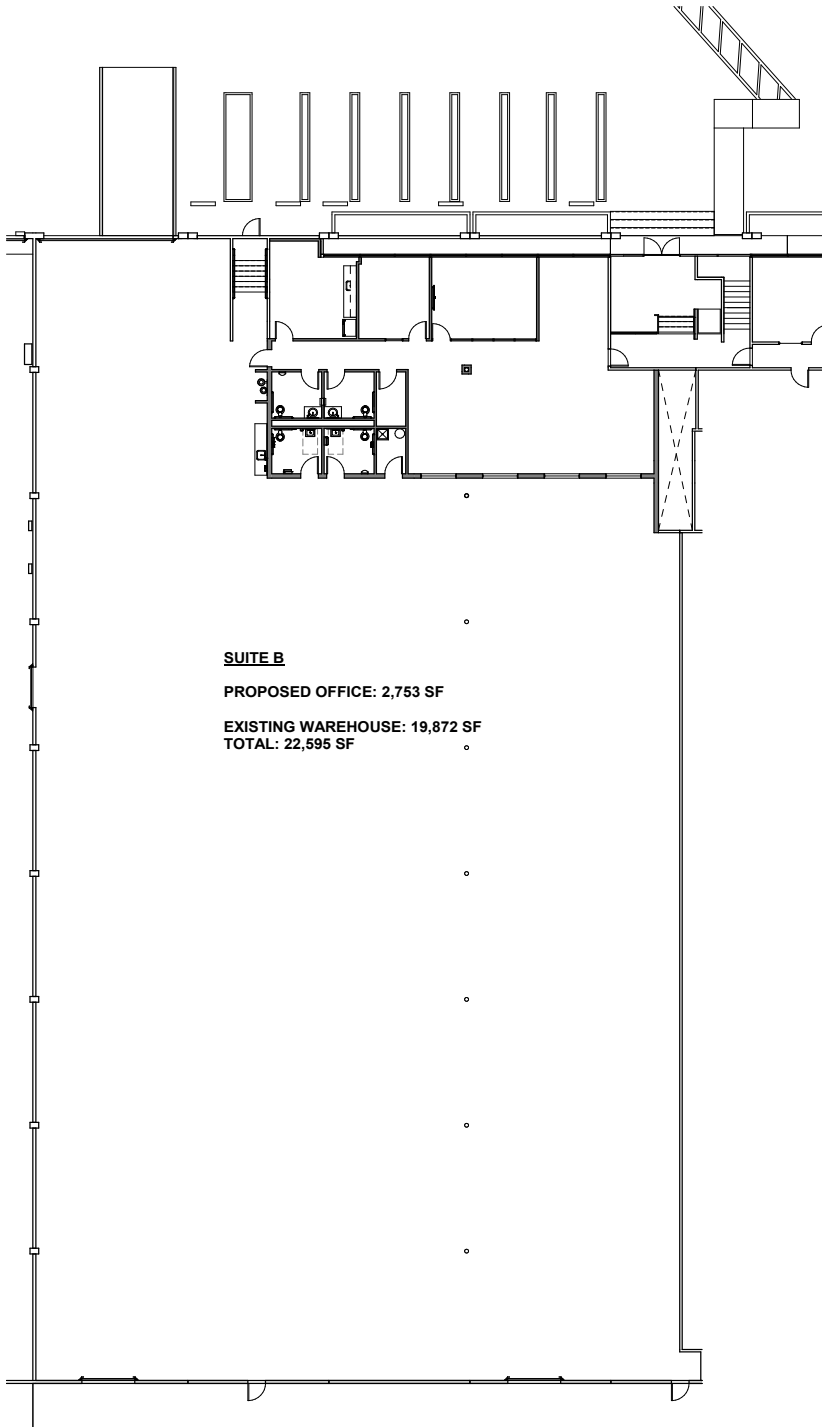
Highlights

Available Space:	22,595 SF
Building SF:	100,778 SF
Office Space:	± 2,753 SF
Clear Height:	20'
Loading Doors:	2 DH / 1 GL
Parking Ratio:	TBD
Power:	200 Amps 277-480 Volts



2610 Columbia Street Unit B Torrance, CA 90503

Site Plan



Broker Contact:

JEFF SMART

Senior Executive Vice President
License No. 00918873
+1 310 321 1812
jeffrey.smart@colliers.com

ELIZABETH CAPATI

Senior Associate
License No. 02109628
+1 310 321 1855
elizabeth.capati@colliers.com

2141 Rosecrans Avenue
Suite 1120
El Segundo, CA 90245
www.colliers.com



Owner Contact:

JERRY DEVON

Marketing & Leasing Director
898 N.Pacific Coast Highway | Suite 175
El Segundo, CA 90245
Direct: +1 (424) 220-9212
gdevon@firt.com



www.firstindustrial.com

All information furnished regarding the property for sale, rental or financing is obtained from sources deemed reliable. No representation is made to the accuracy thereof and is submitted subject to errors, omissions, change of price rental or other conditions, prior sale, lease, or financing, or withdrawal without notice. First Industrial Realty Trust, Inc. represents the Seller in this transaction and as such owes all duties and obligations