

NEW WALEKRTOWN ROAD

Winston-Salem, NC 27105

\$1,590,000

68 Lots Delivered Shovel-Ready



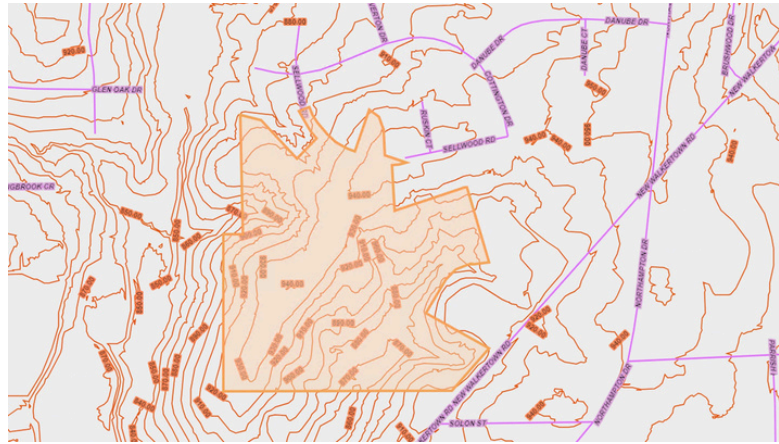
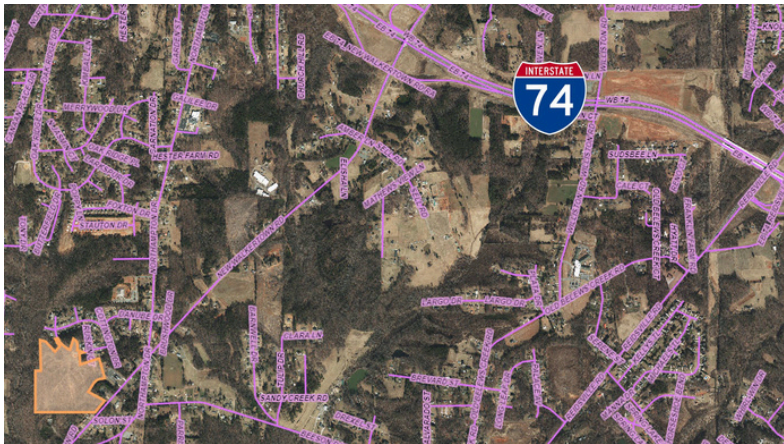
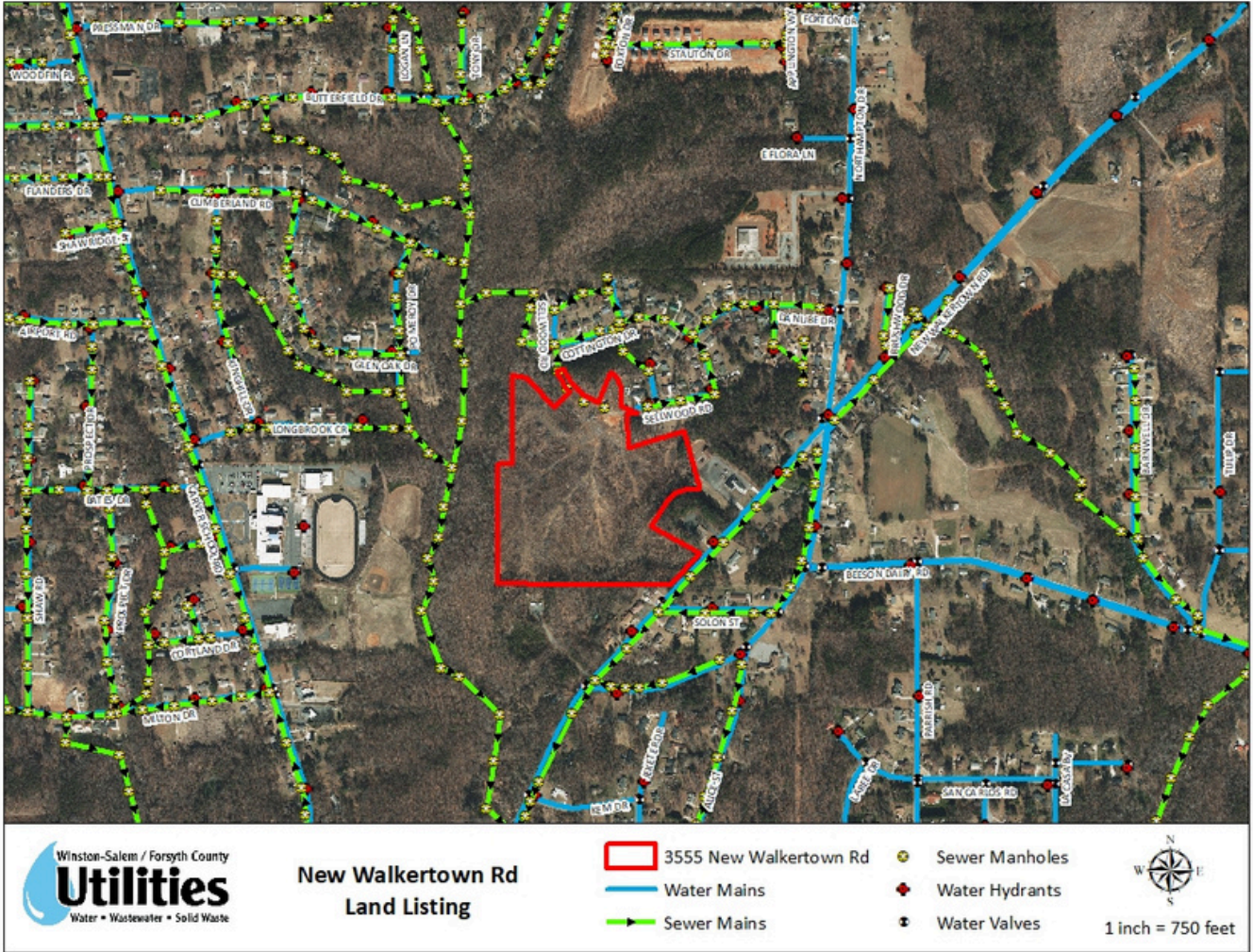
Mike Gatton, Broker
(704) 902-3636
mike@baldwinco.com

Baldwin
PROPERTIES



NEW WALKERTOWN ROAD - WINSTON-SALEM, NC

68 ENTITLED LOTS - 1,590,000



Mike Gatton, Broker
 (704) 902-3636
mike@baldwinco.com

Baldwin
 PROPERTIES



NEW WALKERTOWN ROAD - WINSTON-SALEM, NC

68 ENTITLED LOTS - 1,590,000

68 LOTS DELIVERED SHOVEL-READY IN THE HEART OF THE TRIAD

Developers and Builders: This site is in the heart of the rapidly growing Piedmont-Triad. The property is to be delivered shovel-ready with full entitlements (estimated to be ready by February 2025). The site plan (above) is for 68 SF homes. Property has public water and sewer on site, has multiple access points, and is approximately 1.6 miles from the newly connected Winston-Salem Northern Beltway (I-74) - now quickly connecting this side of town to downtown Winston-Salem, Kernersville, and Greensboro.

HIGHLIGHTS

Location
1.6 Miles from I-74

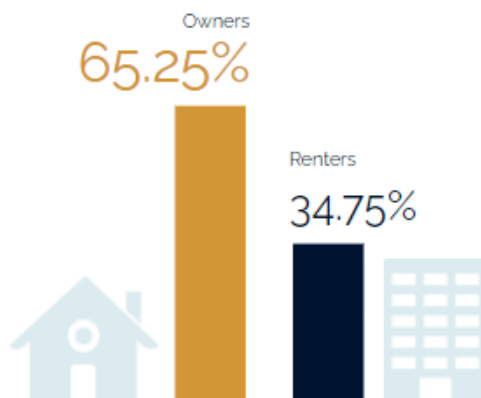
68 Entitled Lots
Expected Delivery in June

Water / Sewer
ON SITE

Housing

There are 31% more households who own their homes than there are renters.

Owners vs. Renters



Mike Gatton, Broker
(704) 902-3636
mike@baldwinco.com

Baldwin
PROPERTIES

