



PARTNERS

**FOR LEASE**

**7624 Boone Ave N | Brooklyn Park, MN**

- Approximately 45,599 SF Total
- Approx 6,669 SF Office & 38,930 Warehouse
- 8 Docks w/ Levelers
- 2 Drive-ins (14'x12' & 10'x8')
- 25' Clear
- ESFR Sprinkler
- Easy Access to I-694, Hwy 169 & Arbor Lakes
- **Lease Rate: \$Negotiable**
- CAM/Tax: \$4.77 PSF



**Eric Riemer**  
Broker  
Phone: 612-730-4631  
[eric@creminnesota.com](mailto:eric@creminnesota.com)

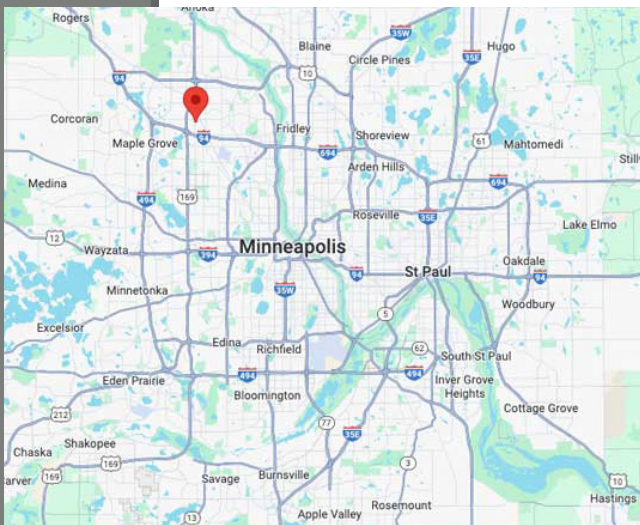
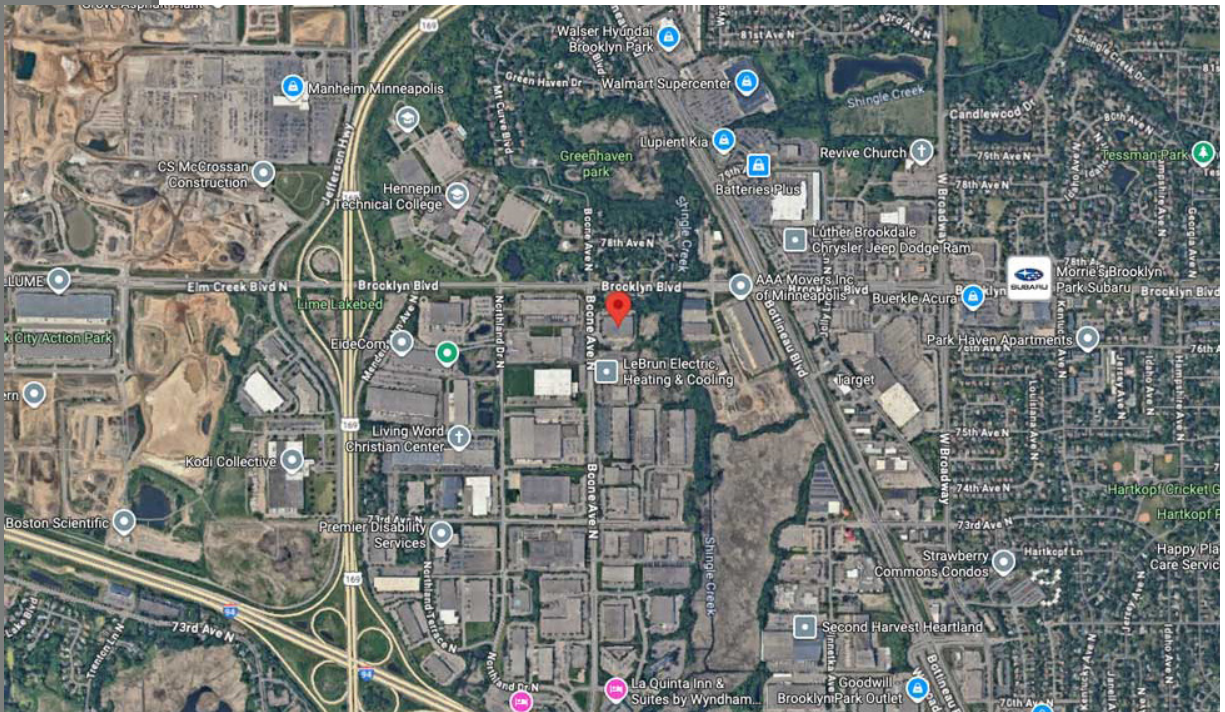
We obtained the information above from sources we believe to be reliable. However, we have not verified its accuracy and make no guarantee, warranty or representation about it. It is submitted subject to the possibility of errors, omissions, change of price, rental or other conditions, prior to sale, lease or financing, or withdrawal without notice. We include projections, opinions, assumptions or estimates for example only, and they may not represent current or future performance of the property. You and your tax and legal advisors should conduct your own investigation of the property.

# CRE

PARTNERS

## FOR LEASE

**7624 Boone Ave N | Brooklyn Park, MN**

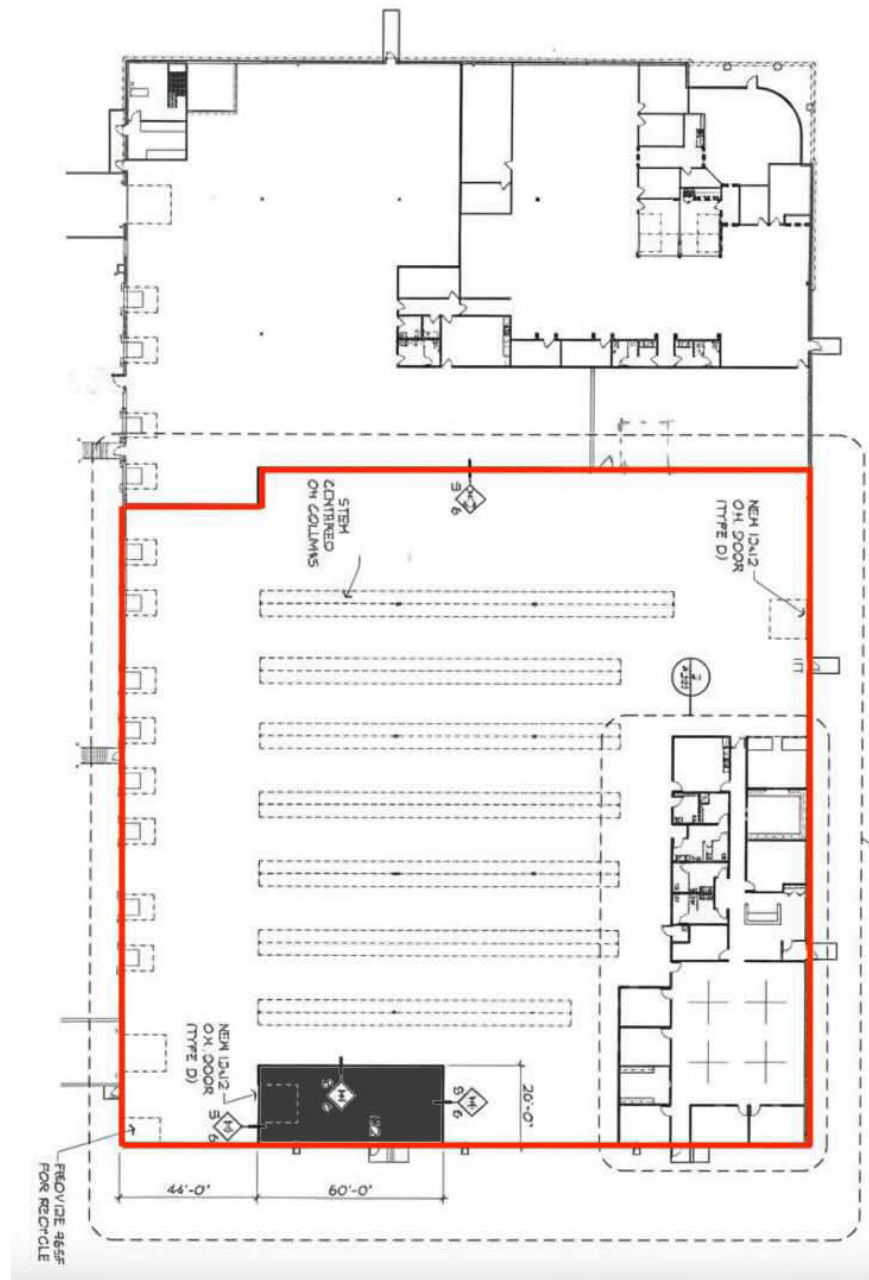


**Eric Riemer**  
**CRE Partners**  
**Broker**

**612-730-4631**

**[eric@creminnesota.com](mailto:eric@creminnesota.com)**







PARTNERS

# PHOTOS

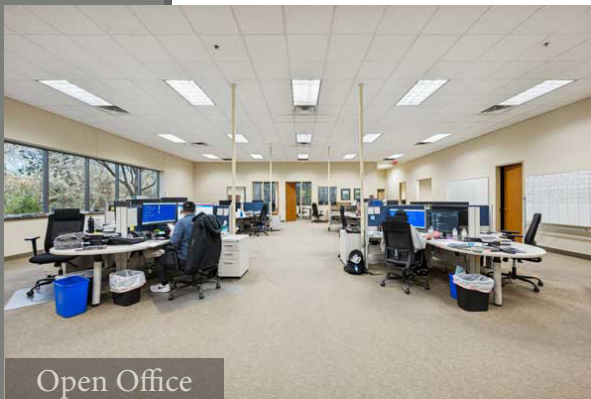
For more info, visit: [7624 Boone Ave N, Brooklyn Park](https://www.commercialrealestateminnesota.com/7624-Boone-Ave-N-Brooklyn-Park)



Reception



Executive Office



Open Office



Workroom



Warehouse



Loading