

Methodist Medical Plaza I & II

6820-6920 Parkdale Place, Indianapolis, IN 46254

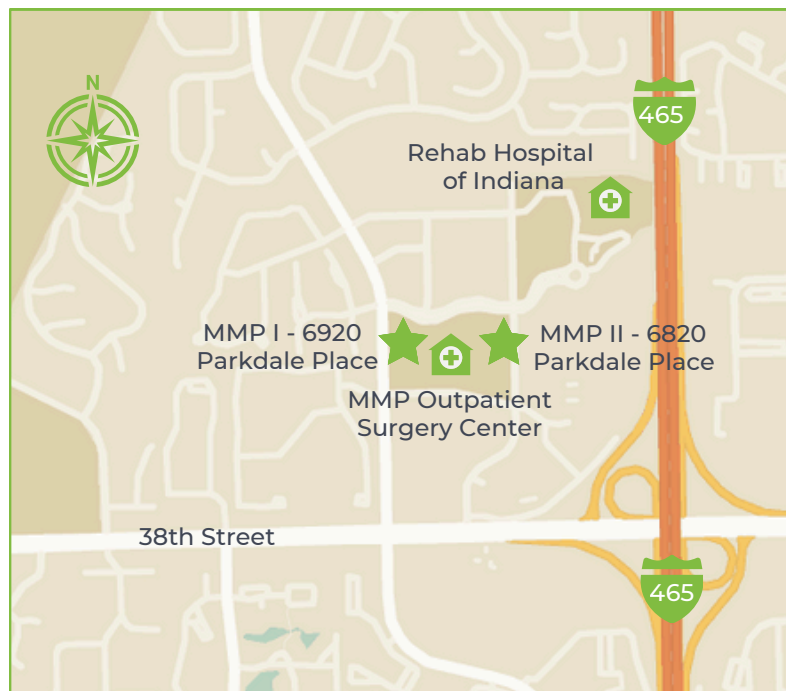
Medical/Office Space for Lease



LOCATION DESCRIPTION

Methodist Medical Plaza I and II are both located just off the I-465 and 38th Street exit in the Eagle Highlands complex, a premier medical office park on the west side of Indianapolis.

Both buildings are connected to The Methodist Outpatient Center which contains six operating rooms, flat film, fluoroscopy, ultra-sound, mammography, CT scanning, Magnetic Resonance Imaging, a licensed pathology laboratory and a community resource/activity room.



LEASING INFORMATION

Drew Deffner
Executive Vice President
Drew@alopg.com
C: 317.376.3897

Lora Moore
Executive Managing Director
Lora@alopg.com
C: 765.918.4999

ALO Property Group
9075 N Meridian St., Ste. 175
Indianapolis, IN 46260
O: 317.853.7500



Methodist Medical Plaza I & II

6820-6920 Parkdale Place, Indianapolis, IN 46254

Medical/Office Space for Lease



PROPERTY INFORMATION

- 1,205 - 3,080 SF Available
- Excellent location and access to I-465 at 38th street
- Surrounded by ample food, shopping, and other lifestyle amenities
- Imaging and ancillary services available in Surgery Center with central admissions area
- Convenient covered drop-off area for patients

KEY TENANTS



Eagle Creek
Dermatology

QC Kinētix[®]
NON-SURGICAL REGENERATION



LEASING INFORMATION

Drew Deffner
Executive Vice President
Drew@alopg.com
C: 317.376.3897

Lora Moore
Executive Managing Director
Lora@alopg.com
C: 765.918.4999

ALO Property Group
9075 N Meridian St., Ste. 175
Indianapolis, IN 46260
O: 317.853.7500

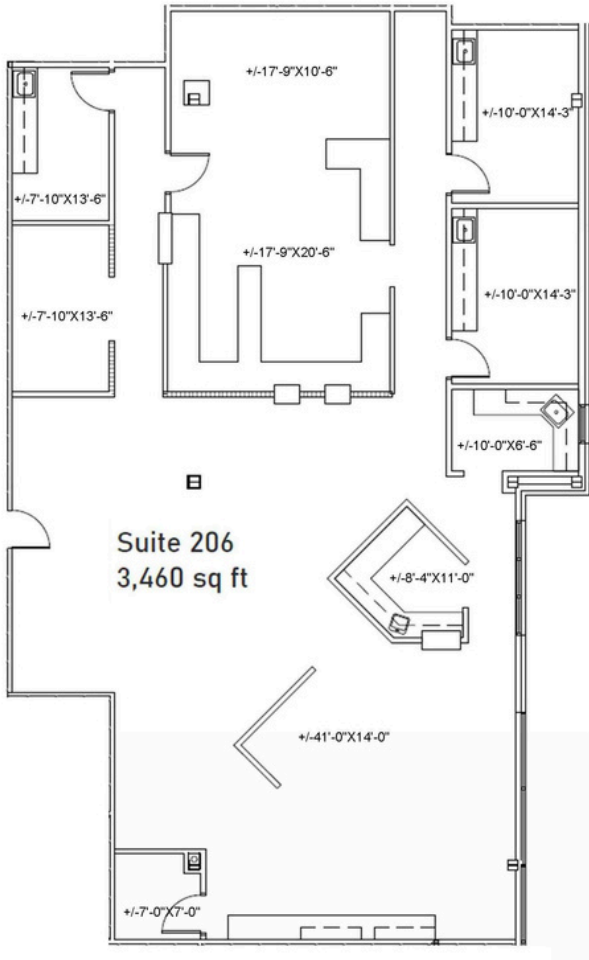


Methodist Medical Plaza I & II

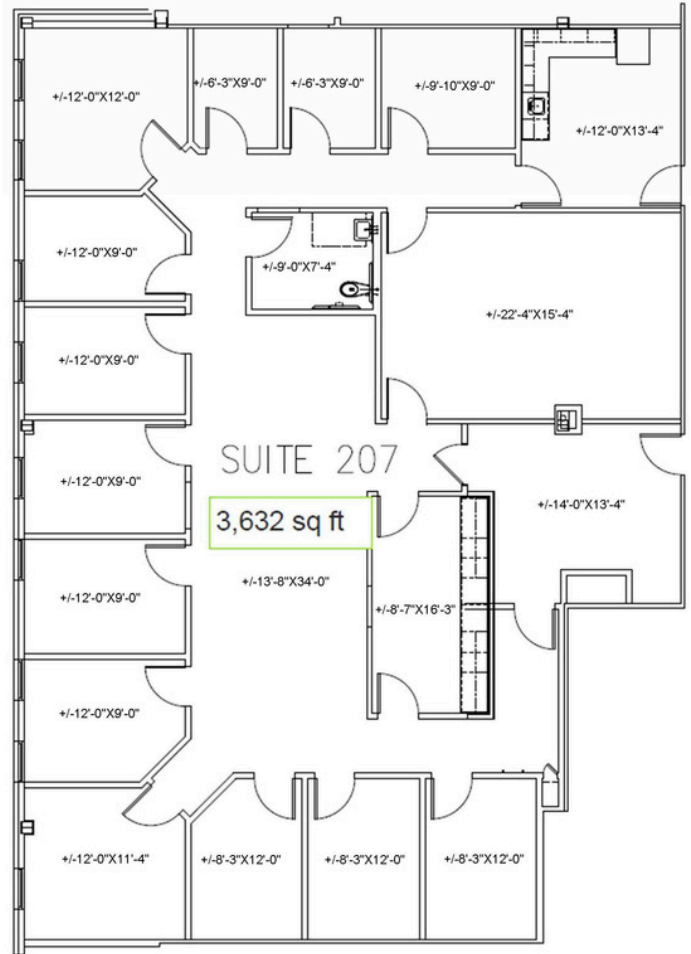
6820-6920 Parkdale Place, Indianapolis, IN 46254

Medical/Office Space for Lease

MMP I | Suite 206 3,460 SF



MMP I | Suite 207 3,632 SF



LEASING INFORMATION

Drew Deffner
Executive Vice President
Drew@alopg.com
C: 317.376.3897

Lora Moore
Executive Managing Director
Lora@alopg.com
C: 765.918.4999

ALO Property Group
9075 N Meridian St., Ste. 175
Indianapolis, IN 46260
O: 317.853.7500

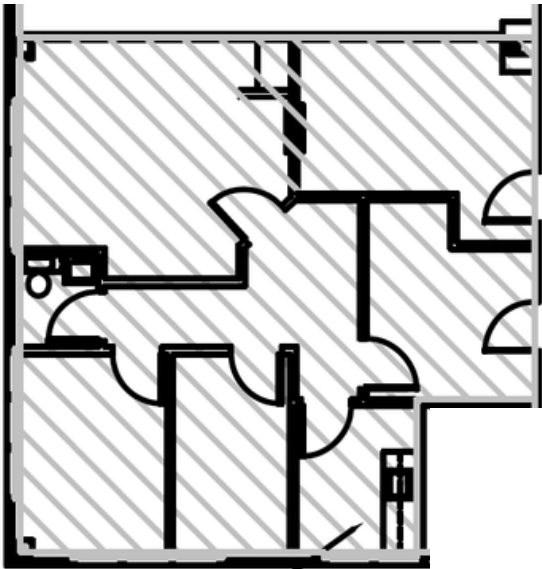


Methodist Medical Plaza I & II

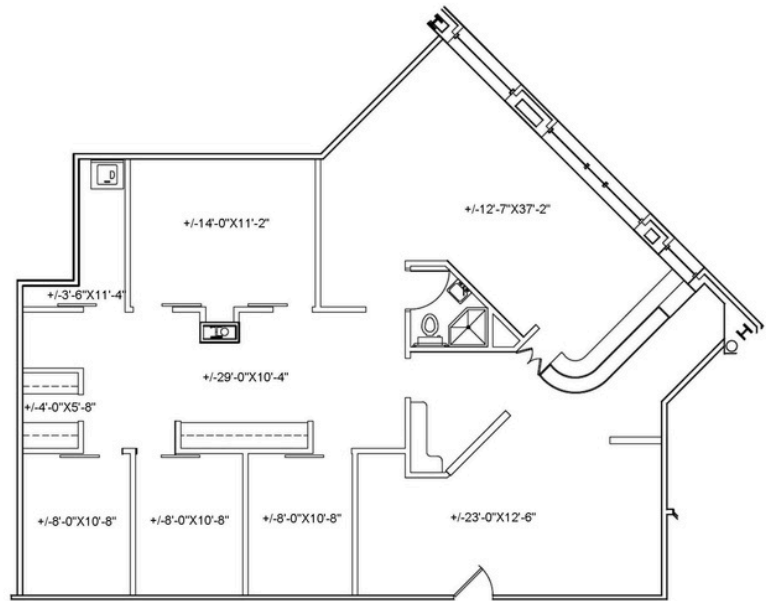
6820-6920 Parkdale Place, Indianapolis, IN 46254

Medical/Office Space for Lease

MMP I | Suite 108 1,071 SF



MMP II | Suite 109 1,962 SF



SUITE 109
1,962 RSF

LEASING INFORMATION

Drew Deffner
Executive Vice President
Drew@alopg.com
C: 317.376.3897

Lora Moore
Executive Managing Director
Lora@alopg.com
C: 765.918.4999

ALO Property Group
9075 N Meridian St., Ste. 175
Indianapolis, IN 46260
O: 317.853.7500

