

FOR LEASE

Office / Industrial

12060-12064 WOODSIDE AVE., LAKESIDE, CA 92040



Suite 101
OFFICE

Your Name Here

Nick Mane
Associate Vice President
Nick@PacificCoastCommercial.com
Lic. 01939391

Jasmine Golia
Sales & Leasing Associate
Jasmine@PacificCoastCommercial.com
Lic. 02131001



Office (619) 469-3600 | 10721 Trenea St., Suite 200, San Diego, CA 92131 | www.PacificCoastCommercial.com | Lic. 01209930

FOR LEASE

Office / Industrial

12060-12064 WOODSIDE AVE., LAKESIDE, CA 92040

PROPERTY FEATURES

- Building & Monument Signage Available
- Traffic Count: +/-10,000 Cars Per Day
- Zoned: County of San Diego C-37 (Download)

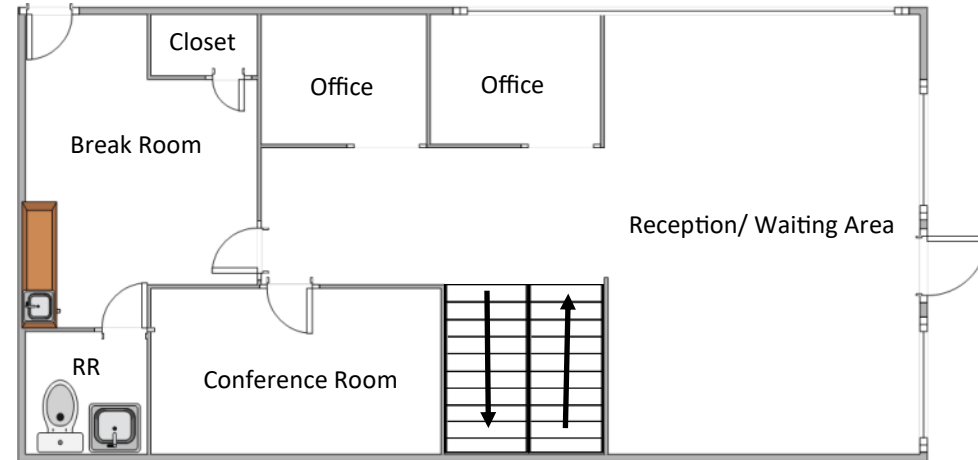
SUITE 101

+/-1,950 SF High End Office Space

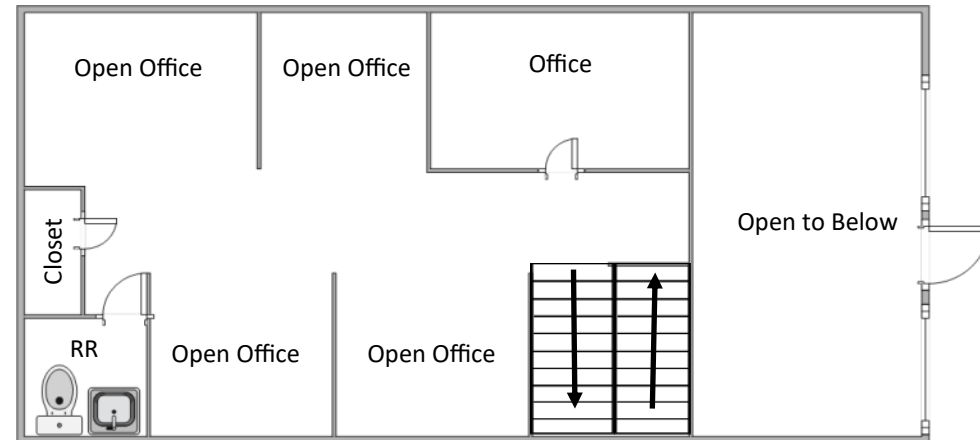
- 4 Open Office / Workstations
- 3 Private Offices
- Kitchenette & Break Area
- 2 Restrooms
- Granite Countertops / Polished Concrete Floors
- **Lease Rate: \$2,925/Month, Gross**

(Floor Plan is not to scale; for reference purposes only)

1st Floor



2nd Floor



Nick Mane
Associate Vice President
Nick@PacificCoastCommercial.com
Lic. 01939391

Jasmine Golia
Sales & Leasing Associate
Jasmine@PacificCoastCommercial.com
Lic. 02131001



FOR LEASE

Office / Industrial

12060-12064 WOODSIDE AVE., LAKESIDE, CA 92040



Contact Information

Nick Mane

Associate Vice President

Direct (760) 840-7140

Nick@PacificCoastCommercial.com

Lic. 01939391

Jasmine Golia

Sales & Leasing Associate

Office (619) 469-3600 Ext 158

Jasmine@PacificCoastCommercial.com

Lic. 02131001

Pacific Coast Commercial

Office (619) 469-3600

10721 Treena Street, Suite 200

San Diego, CA 92131

www.PacificCoastCommercial.com

Lic. 01209930