

±31,238 SF

59 Jackson Street | Holyoke, MA



CBRE is pleased to offer for sublease a free-standing warehouse building at 59 Jackson Street in Holyoke, MA.

+ Total Square Feet: ±31,238 SF

– ±17,171 SF Warehouse

– ±14,067 SF Office

+ Clear Height: 24'8"

+ Drive-in doors: 1 (10' x 14')

+ Loading Docks: 3 (8' x 10')

+ Sprinkler: Wet system

+ Power: 1,200 Amps

+ Electric: Holyoke Gas & Electric

+ Heat: Gas, forced hot air

+ Gas: Holyoke Gas & Electric

+ Water/Sewer: City of Holyoke

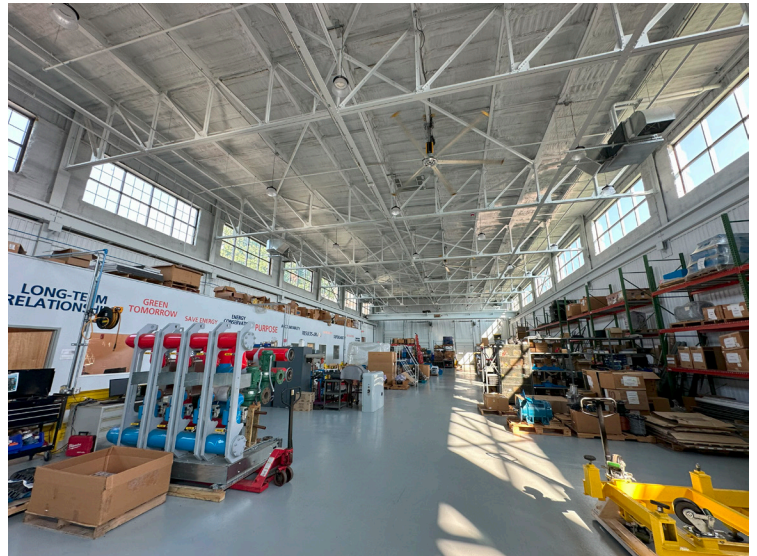
+ Location: 0.2 miles from I-391 (1 minute drive)

+ Lease Rate: \$6.50/SF NNN

±31,238 SF
59 Jackson Street | Holyoke, MA

For Sublease

Photos



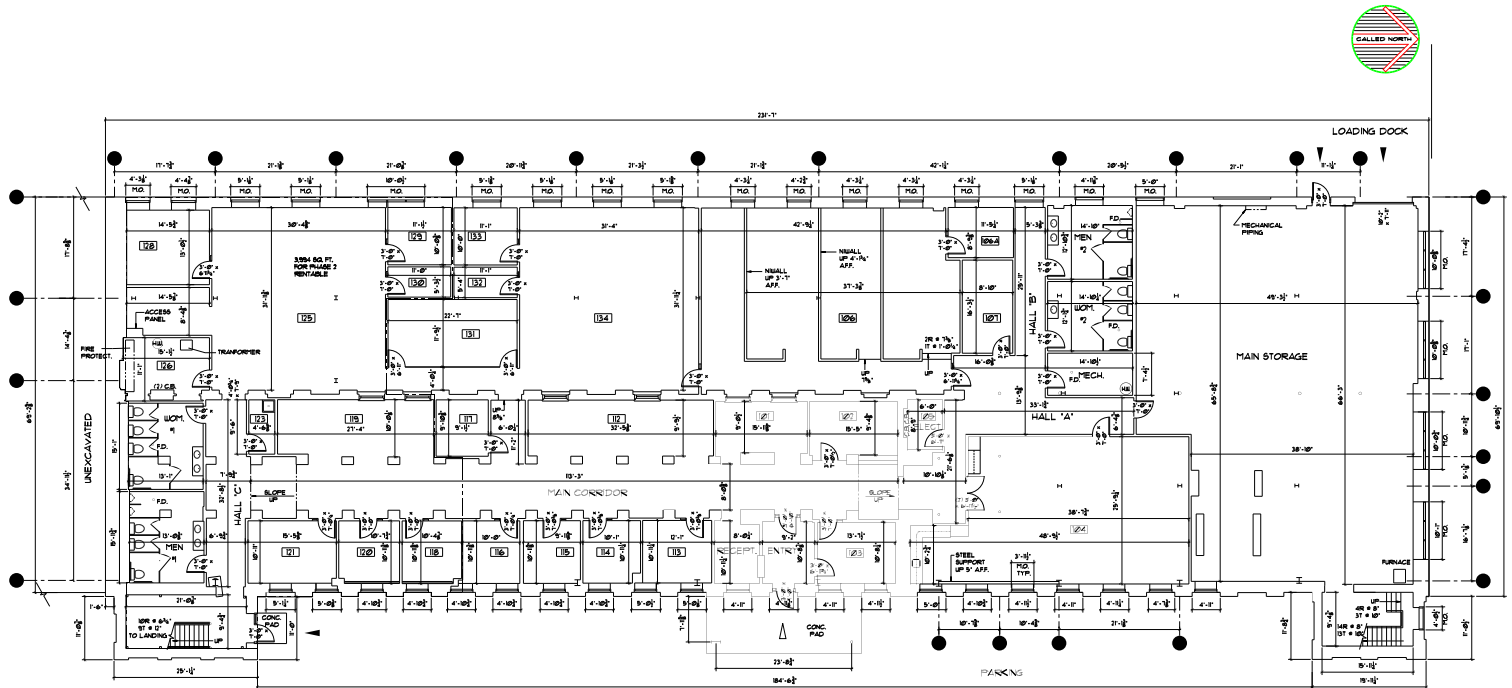
±31,238 SF

59 Jackson Street | Holyoke, MA

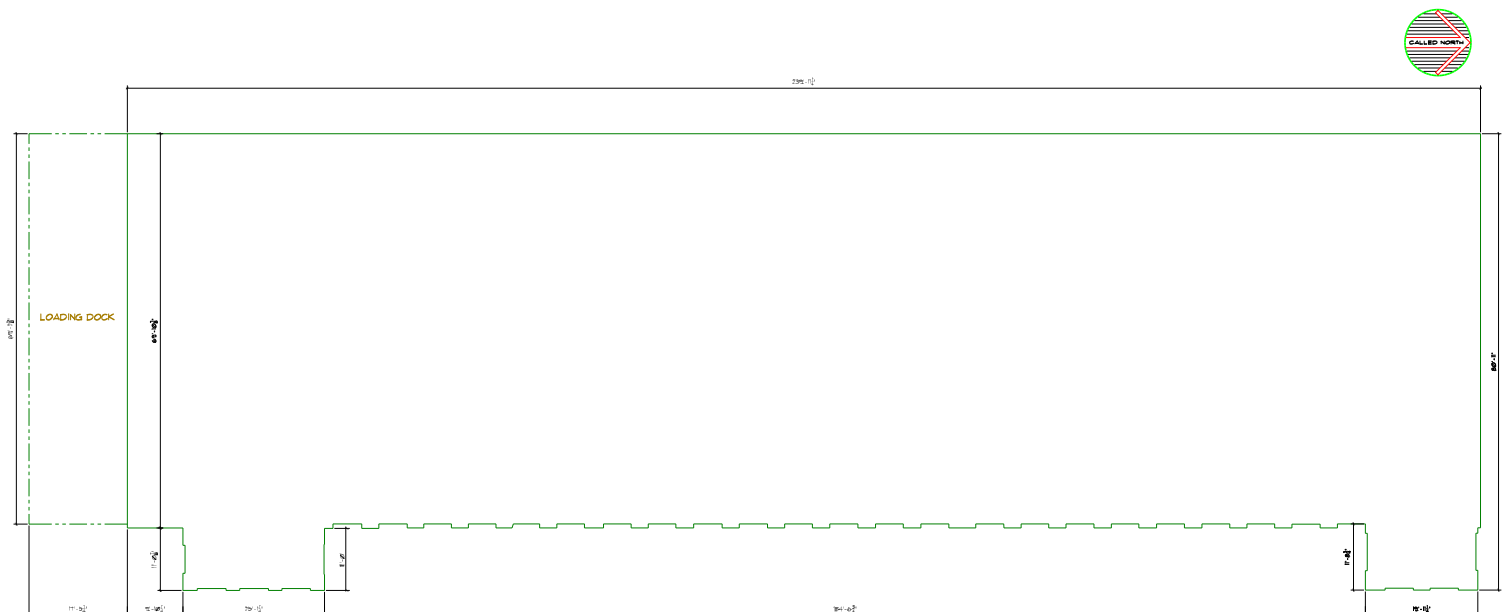
For Sublease

Floor Plans

First Floor: 14,067 SF (Office)



Second Floor: 17,171 SF (Warehouse)

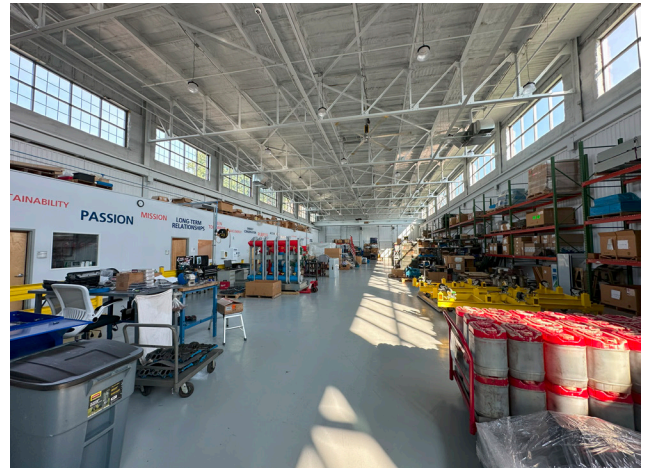
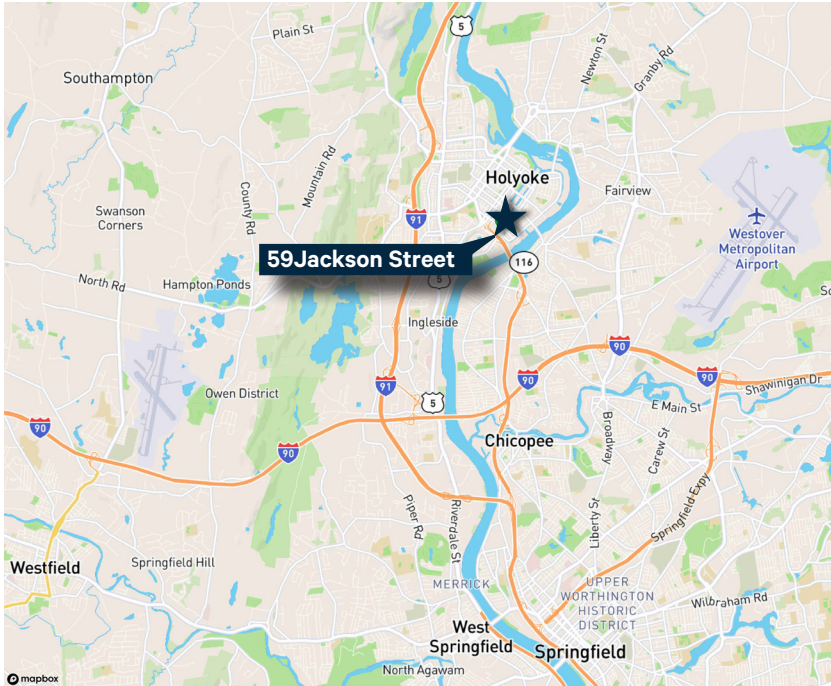


±31,238 SF

59 Jackson Street | Holyoke, MA

For Sublease

Location Map



Contact Us

John Reed

Senior Vice President

+1 413 732 9150

+1 860 559 1562 (c)

john.reed@cbre.com

Jack Reed

First Vice President

+1 860 987 4789

+1 860 716 8493 (c)

jack.reed@cbre.com

© 2025 CBRE, Inc. All rights reserved. This information has been obtained from sources believed reliable but has not been verified for accuracy or completeness. CBRE, Inc. makes no guarantee, representation or warranty and accepts no responsibility or liability as to the accuracy, completeness, or reliability of the information contained herein. You should conduct a careful, independent investigation of the property and verify all information. Any reliance on this information is solely at your own risk. CBRE and the CBRE logo are service marks of CBRE, Inc. All other marks displayed on this document are the property of their respective owners, and the use of such marks does not imply any affiliation with or endorsement of CBRE. Photos herein are the property of their respective owners. Use of these images without the express written consent of the owner is prohibited.