

**3.92 ACRES
AVAILABLE**

927 Tower Road
Mundelein, Illinois 60181

One Oakbrook Terrace
Suite 400
Oakbrook Terrace, Illinois 60181
+1 630 932 1234

hiffman.com

PROPERTY HIGHLIGHTS

- Site Size: 3.92 Acres
- Frontage: 220'
- PIN: 11-31-202-022
- County: Lake
- Zoning: M-1 [Link to Zoning Table](#)
- Sale Price: Subject to Offer
- Utilities to the site
- Industrial park setting
- 5.8 miles from full interchange
- Detention pond in place

DILIGENCE COMPLETED:

- Soil testing
- Traffic study
- Topographic map
- Plat of survey

PERMITTED USES:

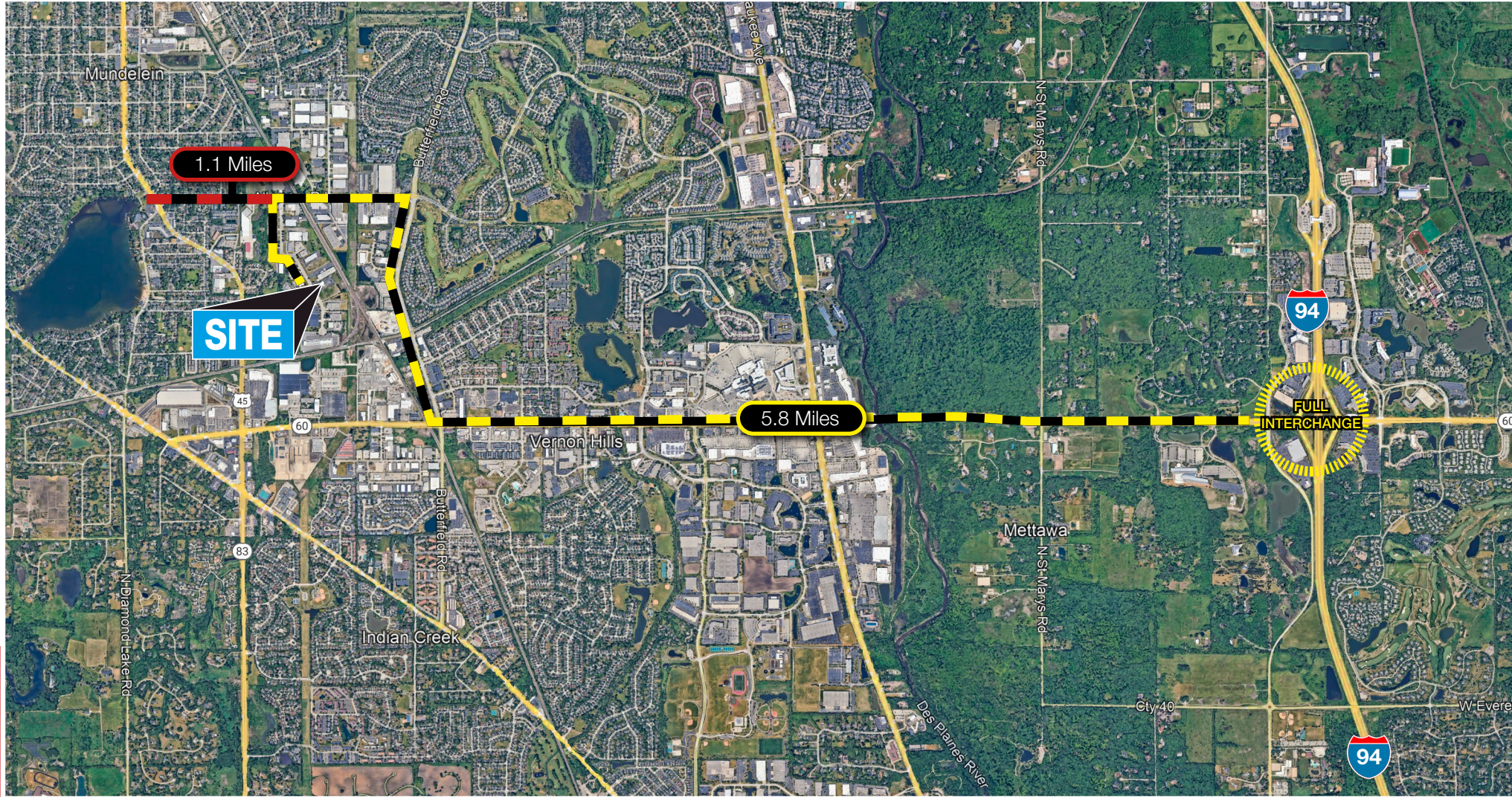
- Freight terminal
- Motor vehicle operations facility
- Contractor storage yard - fully enclosed (permanent structure)
- Manufacturing, general or light
- Recycling facility, minor
- Warehouse, distribution
- Motor vehicle service; repair, major or minor

Contact

Alex Sutterer
630 693 0644
asutterer@hiffman.com

Packy Doyle
630 691 0601
pdoyle@hiffman.com





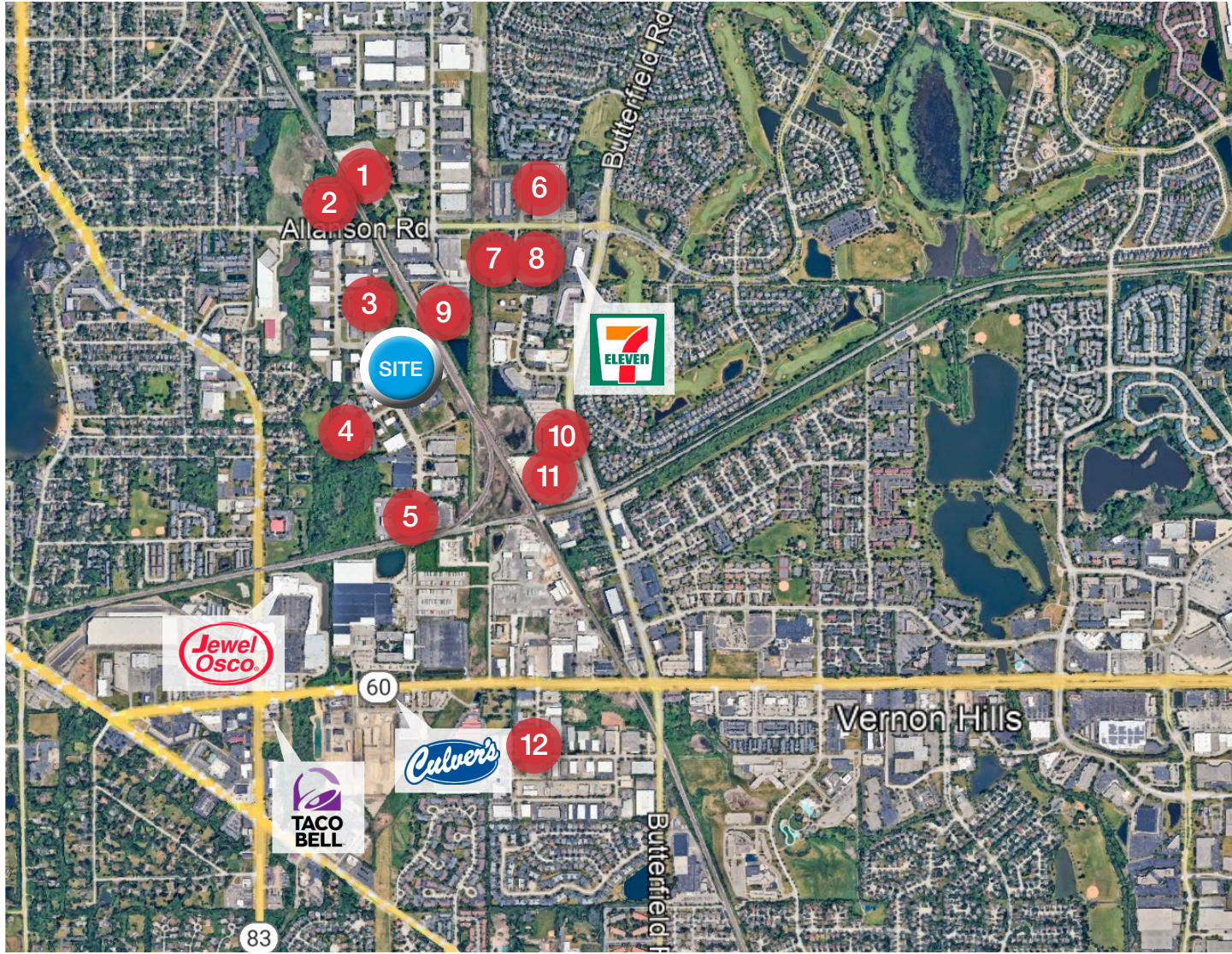
Contact

Alex Sutterer
630 693 0644
asutterer@hiffman.com

Packy Doyle
630 691 0601
pdoyle@hiffman.com

One Oakbrook Terrace
Suite 400
Oakbrook Terrace, Illinois 60181
+1 630 932 1234

hiffman.com



CORPORATE NEIGHBORS

1	MacLean-Fogg Company
2	Commercial Plastics Company
3	Print-O-Tape
4	Larsen Manufacturing
5	XPO Logistics
6	Alltech Automotive
7	Larsen Manufacturing
8	Reprecht/Kilcoy Global Foods
9	Premier Fulfillment & Distribution
10	Stellar Cargo
11	Prairie Materials
12	Carter-Hoffmann

Contact

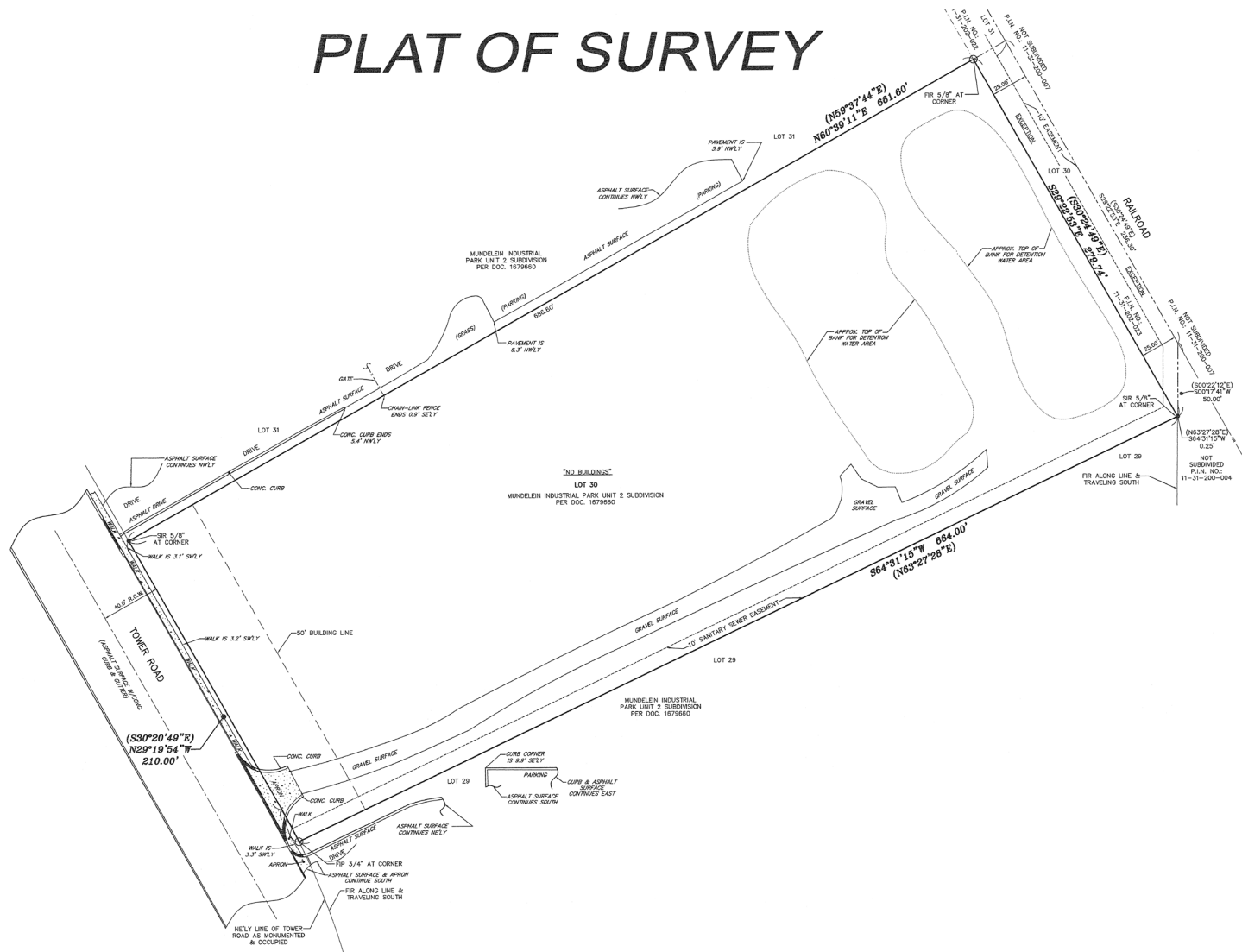
Alex Sutterer
630 693 0644
asutterer@hiffman.com

Packy Doyle
630 691 0601
pdoyle@hiffman.com

One Oakbrook Terrace
Suite 400
Oakbrook Terrace, Illinois 60181
+1 630 932 1234

hiffman.com

PLAT OF SURVEY



Contact

Alex Sutterer
630 693 0644
asutterer@hiffman.com

Packy Doyle
630 691 0601
pdoyle@hiffman.com

One Oakbrook Terrace
Suite 400
Oakbrook Terrace, Illinois 60181
+1 630 932 1234

hiffman.com