

3016 KERMIT HWY

WEST ODESSA, TEXAS | FOR LEASE: ± 13,655 SF
OFFICE SPACE AVAILABLE



FOR LEASING INFORMATION, PLEASE CONTACT



Michael McBroom,
Senior Vice President
Sonny Brown Associates, LLC
+1 915-584-5511 Office
+1 281-543-2350 Mobile
michael@sonnybrown.com



John Elphick, CCIM,
Broker
Moriah Brokerage Services, LLC
+1 432-682-2510 Office
+1 432-553-9253 Mobile
john@moriahgroup.net



Disclaimer: The information contained herein has been obtained from sources deemed reliable; however, no guaranty or warranty can be made as to its accuracy, completeness or adequacy of this information. All offerings are subject to prior lease or withdrawal from the market without notice. All images shown are conceptual and designs are subject to change.

3016 KERMIT HWY, WEST ODESSA, TEXAS | FOR LEASE: ± 13,655 SF

OFFICE SPACE AVAILABLE

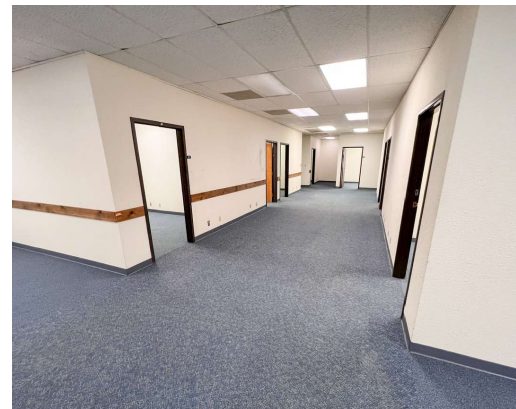
PROPERTY DESCRIPTION



Great office space available in West Odessa, with quick access to Delaware Basin and Midland Basin. Site features larger parking area, with 30+ individual offices as well as open floor area for workstations or other use.

FEATURES

- **Building Size:** ±33,428 SF
- **Available Space:** ±13,655 SF
- **Year Built:** 1993
- **Land Site:** 4.46 AC
- **Parking Ratio:** 3:1,000 SF



FOR LEASING INFORMATION, PLEASE CONTACT

Michael McBroom, Senior Vice President
+1 915-584-5511 Office | +1 281-543-2350 Mobile
michael@sonnybrown.com

John Elphick, CCIM, Broker
+1 432-682-2510 Office | +1 432-553-9253 Mobile
john@moriahgroup.net



3016 KERMIT HWY, WEST ODESSA, TEXAS | FOR LEASE: ± 13,655 SF OFFICE SPACE AVAILABLE

AERIAL VIEW



AVAILABLE OFFICE SPACE

FOR LEASING INFORMATION, PLEASE CONTACT

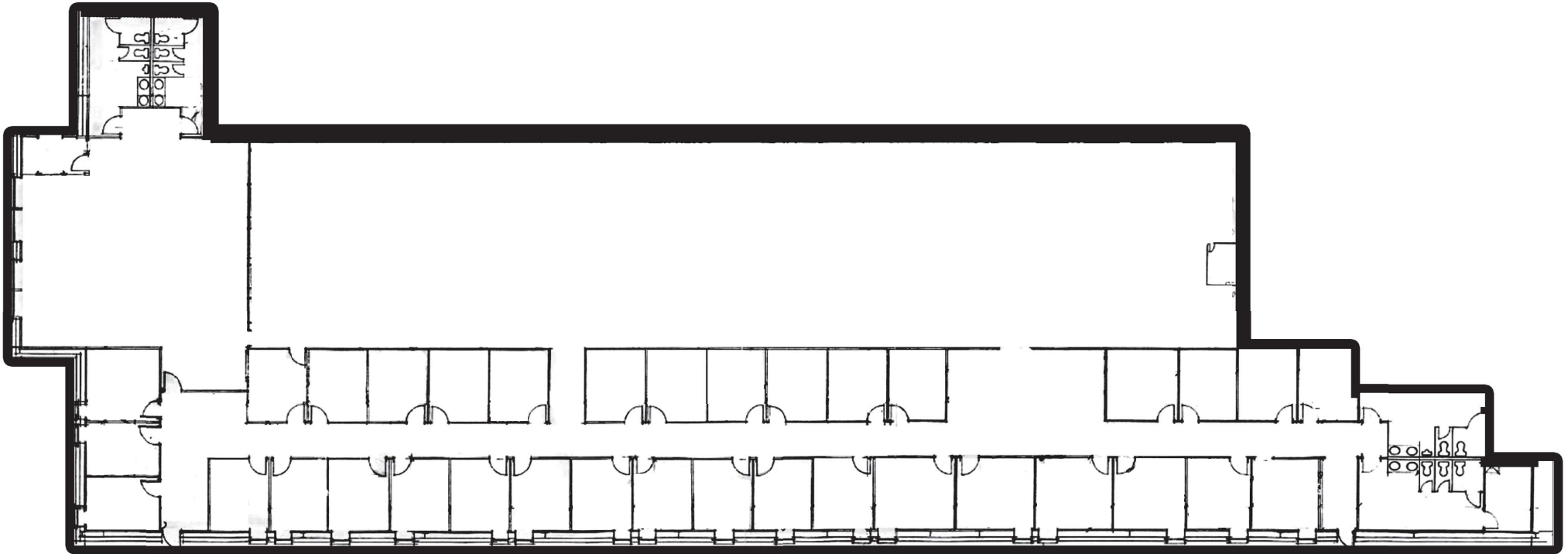
Michael McBroom, Senior Vice President
+1 915-584-5511 Office | +1 281-543-2350 Mobile
michael@sonnybrown.com

John Elphick, CCIM, Broker
+1 432-682-2510 Office | +1 432-553-9253 Mobile
john@moriahgroup.net



3016 KERMIT HWY, WEST ODESSA, TEXAS | FOR LEASE: ± 13,655 SF
OFFICE SPACE AVAILABLE

FLOOR PLAN | ±13,655 SF



FOR LEASING INFORMATION, PLEASE CONTACT

Michael McBroom, Senior Vice President
+1 915-584-5511 Office | +1 281-543-2350 Mobile
michael@sonnybrown.com

John Elphick, CCIM, Broker
+1 432-682-2510 Office | +1 432-553-9253 Mobile
john@moriahgroup.net



