

# 2 CENTRAL STREET FRAMINGHAM, MA



## OFFICE / R&D / FLEX SPACE AVAILABLE

*This historic Mill property was originally established in the 1800s as a woolen mill, later becoming the Roxbury Carpet Company in the 20th century. It is now the vibrant home of over 70 small businesses and is comprised of 400,000 square feet of office, R&D, manufacturing, storage, wholesale, and retail.*

### FEATURES:

- Post & Beam Mill Construction
- Freight & Passenger Elevators
- River Views
- Open Floor Plans
- Air Conditioned

### AVAILABILITY:

- Mill 1, 2nd Floor: 1,600 SF
- Mill 3, 2nd Floor: 3,450 SF Office
- Mill 3, 3rd Floor: 2,323 SF

### RENTAL RATE:

\$17/SF Gross, Plus Electric

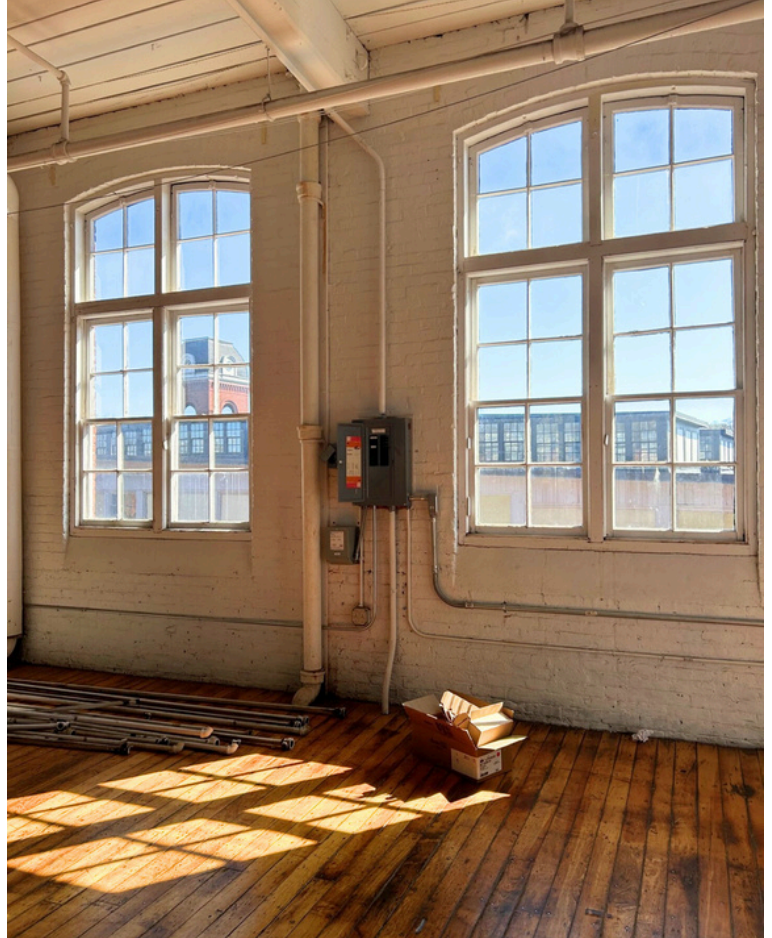
**R.W. HOLMES**  
COMMERCIAL REAL ESTATE

**FOR MORE INFORMATION PLEASE CONTACT: CRAIG JOHNSTON**  
CJOHNSTON@RWHOLMES.COM  
(508) 651-9022

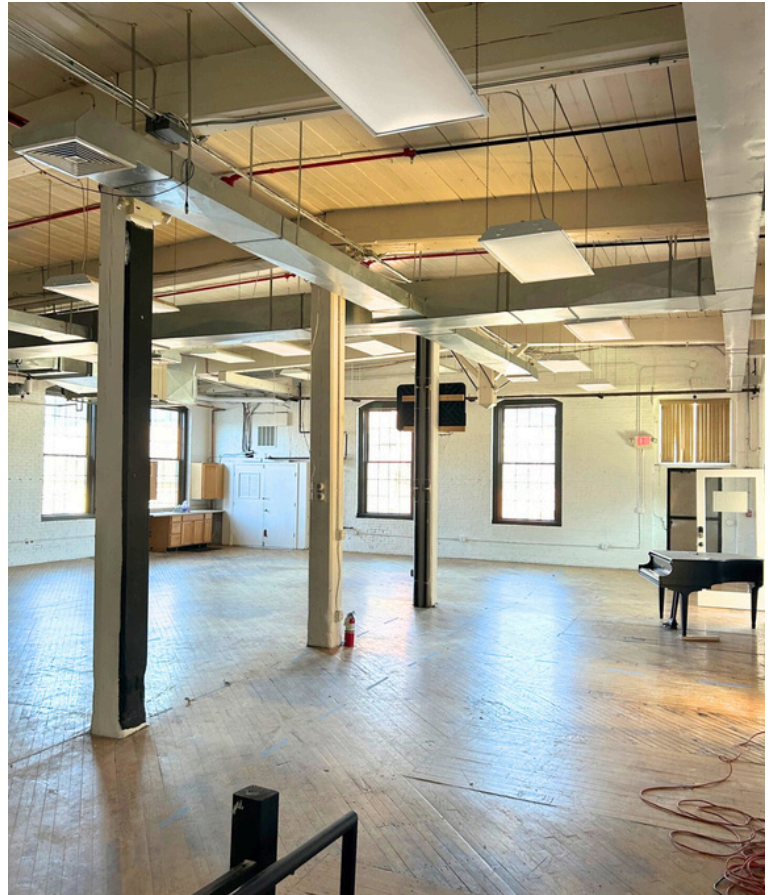
All information furnished regarding property for sale, rental or financing is from sources deemed reliable. No representation is made as to the accuracy thereof and is submitted subject to errors, omissions, change of price, rental or other conditions, prior sale, lease or financing, or withdrawal without notice.

[WWW.RWHOLMES.COM](http://WWW.RWHOLMES.COM)

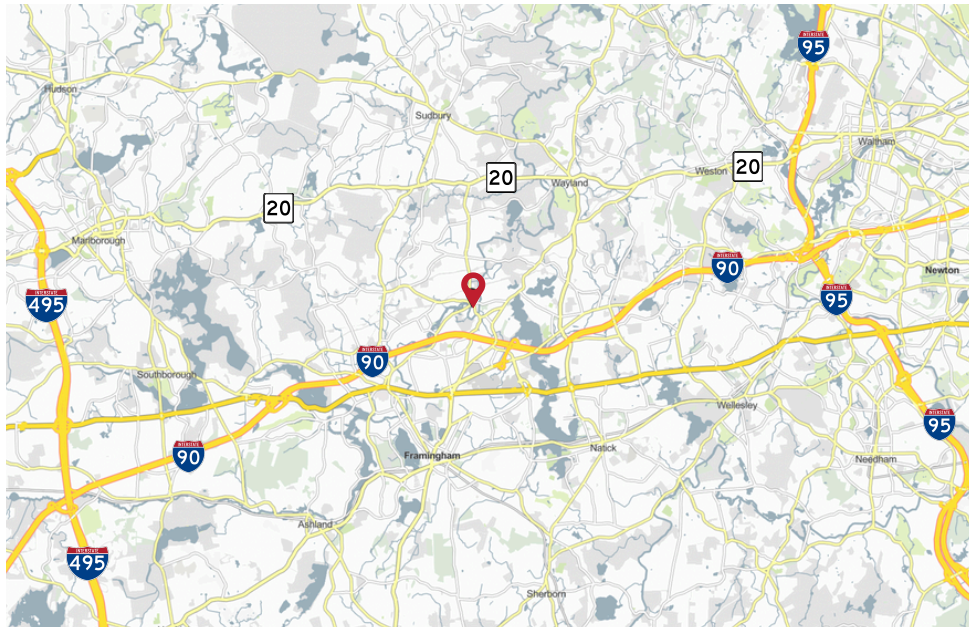
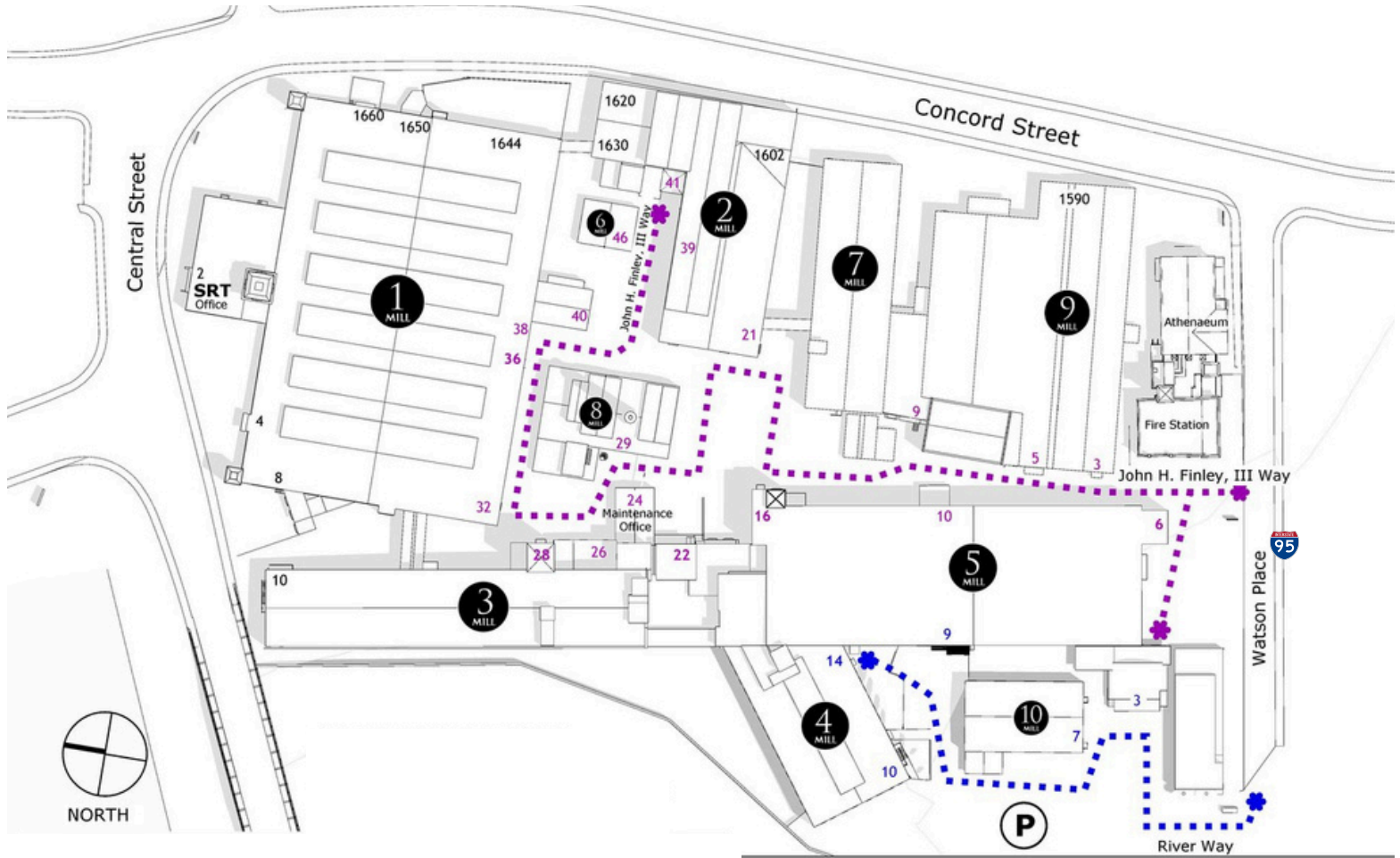












## LOCATION & ACCESS

I-90 — 1 MILE

ROUTE 9 — 2 MILES

I-495 — 9.5 MILES

I-95 — 9.5 MILES

R.W. HOLMES COMMERCIAL REAL ESTATE 321 COMMONWEALTH ROAD, SUITE 202, WAYLAND, MA. 01778  
(508) 655-5626 | FAX (508) 651-3415 | INFO@RWHOLMES.COM | WWW.RWHOLMES.COM

All information furnished regarding property for sale, rental or financing is from sources deemed reliable. No representation is made as to the accuracy thereof and is submitted subject to errors, omissions, change of price, rental or other conditions, prior sale, lease or financing, or withdrawal without notice.

WWW.RWHOLMES.COM