

## LAND FOR SALE

±0.23 ACRES OF LEVEL LAND IN CALIFORNIA CITY

20513 Medio St, California City, CA 93505



Sale Price

**\$21,500**

### PROPERTY HIGHLIGHTS

- ±0.23 Acres of Level Land | Secure Location
- 120' Wide By 85' Deep (10,317 SF) | Easy Access
- Seller Carry Financing Available w/ 10% Down!
- Private Setting Minutes Away From Central Park
- Paved Road Frontage Access from North & West
- Quick Access from Great Cir Dr & Loop Blvd
- North and South Bound Freeways Nearby
- Close Proximity to California City Airport

### OFFERING SUMMARY

Available SF:	±10,317 SF
Lot Size:	0.23 Acres
Price / SF:	\$2.08
Zoning:	R1: Residential
Market:	California City
Submarket:	Central California City
Cross Streets:	Medio St & Great Cir Dr
APN:	203-203-33-00-4

We obtained the information above from sources we believe to be reliable. However, we have not verified its accuracy and make no guarantee, warranty or representation about it. It is submitted subject to the possibility of errors, omissions, change of price, rental or other conditions, prior sale, lease or financing, or withdrawal without notice. We include projections, opinions, assumptions or estimates for example only, and they may not represent current or future performance of the property. You and your tax and legal advisors should conduct your own investigation of the property and transaction.

#### JARED ENNIS

Executive Vice President  
O: 559.705.1000  
C: 559.705.1000  
jared@centralcacommercial.com  
CA #01945284

#### KEVIN LAND

Executive Managing Director  
O: 559.705.1000  
kevin@centralcacommercial.com  
CA #01516541

**KW COMMERCIAL**  
7520 N. Palm Ave #102  
Fresno, CA 93711

## LAND FOR SALE

±0.23 ACRES OF LEVEL LAND IN CALIFORNIA CITY

20513 Medio St, California City, CA 93505



### PROPERTY DESCRIPTION

Stunning 0.23 acre (10,317 SF) infill lot located in central California City near many existing businesses & developments. This property features paved road frontage from the north and west, the electric pole is on the south alleyway/corner of the property, existing fire hydrant in place in front of the property, natural gas in place & the water is at the street. Easy access from California City Blvd within 10 miles of Highway 14. Just minutes to Mojave, 28 miles to Tehachapi, 30 miles to Golden Hills, & 40 miles to Lancaster. Seller will carry loan at reasonable terms with only 10% down!

### LOCATION DESCRIPTION

The property is located north of Great Cir Dr, east of Medio St, south of Greenwood Ave and west of Loop Blvd. With perfect access to California City Blvd it offers beautiful views as well as a secure and private location. California City is a city located in northern Antelope Valley in Kern County, California, United States. It is 100 miles north of the city of Los Angeles, and the population was 14,973 at the 2020 census. Covering 203.63 square miles, California City has the third-largest land area of any city in the state of California, and is the largest city by land area in California that is not a county seat.



We obtained the information above from sources we believe to be reliable. However, we have not verified its accuracy and make no guarantee, warranty or representation about it. It is submitted subject to the possibility of errors, omissions, change of price, rental or other conditions, prior sale, lease or financing, or withdrawal without notice. We include projections, opinions, assumptions or estimates for example only, and they may not represent current or future performance of the property. You and your tax and legal advisors should conduct your own investigation of the property and transaction.

#### JARED ENNIS

Executive Vice President  
O: 559.705.1000  
C: 559.705.1000  
jared@centralcacommercial.com  
CA #01945284

#### KEVIN LAND

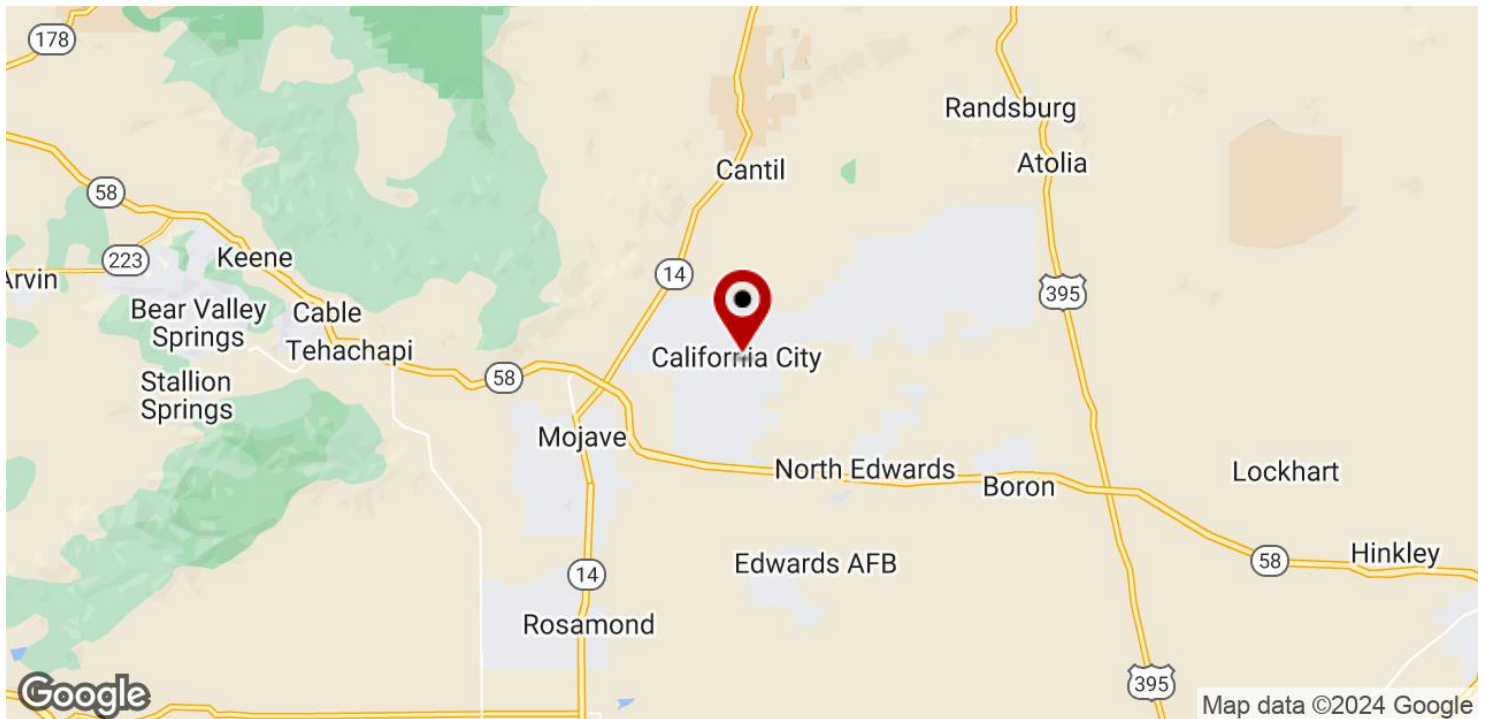
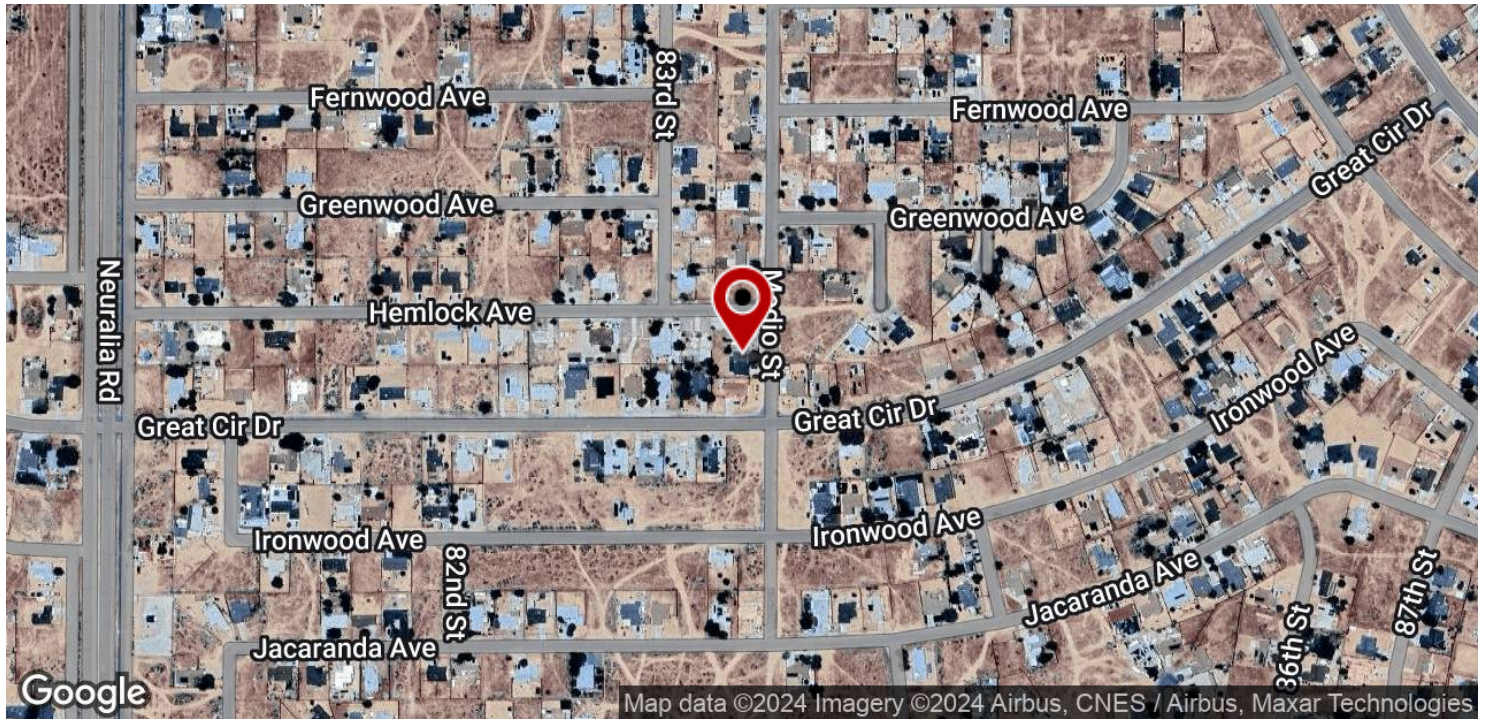
Executive Managing Director  
O: 559.705.1000  
kevin@centralcacommercial.com  
CA #01516541

**KW COMMERCIAL**  
7520 N. Palm Ave #102  
Fresno, CA 93711

## LAND FOR SALE

±0.23 ACRES OF LEVEL LAND IN CALIFORNIA CITY

20513 Medio St, California City, CA 93505



We obtained the information above from sources we believe to be reliable. However, we have not verified its accuracy and make no guarantee, warranty or representation about it. It is submitted subject to the possibility of errors, omissions, change of price, rental or other conditions, prior sale, lease or financing, or withdrawal without notice. We include projections, opinions, assumptions or estimates for example only, and they may not represent current or future performance of the property. You and your tax and legal advisors should conduct your own investigation of the property and transaction.

### JARED ENNIS

Executive Vice President  
O: 559.705.1000  
C: 559.705.1000  
jared@centralcacommercial.com  
CA #01945284

### KEVIN LAND

Executive Managing Director  
O: 559.705.1000  
kevin@centralcacommercial.com  
CA #01516541

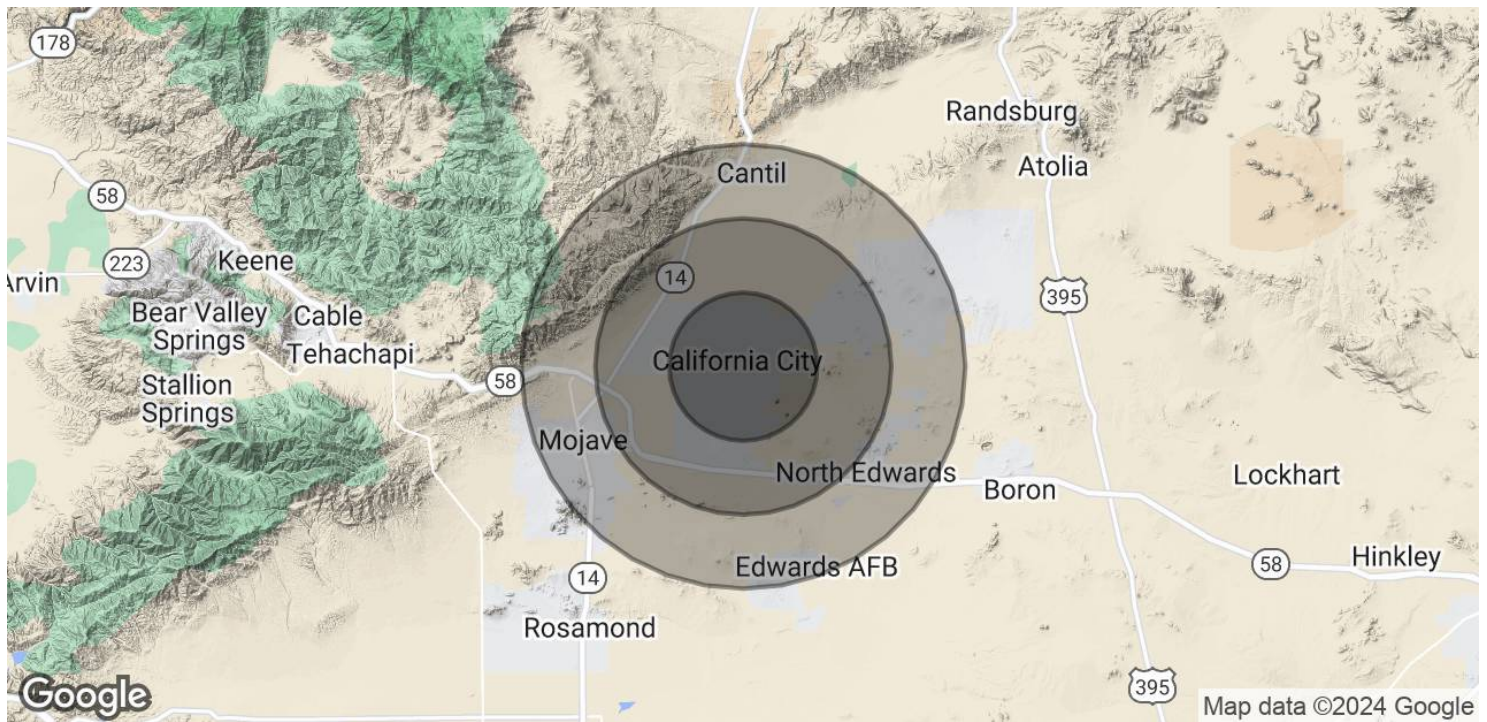
**KW COMMERCIAL**  
7520 N. Palm Ave #102  
Fresno, CA 93711

Each Office Independently Owned and Operated **CentralCaCommercial.com**

## LAND FOR SALE

±0.23 ACRES OF LEVEL LAND IN CALIFORNIA CITY

20513 Medio St, California City, CA 93505



POPULATION	5 MILES	10 MILES	15 MILES
Total Population	10,993	13,293	20,751
Average Age	34.4	34.7	33.9
Average Age (Male)	35.3	35.2	34.8
Average Age (Female)	34.3	36.5	35.6
HOUSEHOLDS & INCOME	5 MILES	10 MILES	15 MILES
Total Households	4,518	5,420	8,435
# of Persons per HH	2.4	2.5	2.5
Average HH Income	\$57,392	\$54,973	\$52,923
Average House Value	\$157,818	\$152,130	\$130,494
ETHNICITY (%)	5 MILES	10 MILES	15 MILES
Hispanic	31.4%	32.7%	32.8%
2020 American Community Survey (ACS)			

We obtained the information above from sources we believe to be reliable. However, we have not verified its accuracy and make no guarantee, warranty or representation about it. It is submitted subject to the possibility of errors, omissions, change of price, rental or other conditions, prior sale, lease or financing, or withdrawal without notice. We include projections, opinions, assumptions or estimates for example only, and they may not represent current or future performance of the property. You and your tax and legal advisors should conduct your own investigation of the property and transaction.

**JARED ENNIS**  
Executive Vice President  
O: 559.705.1000  
C: 559.705.1000  
jared@centralcacommercial.com  
CA #01945284

**KEVIN LAND**  
Executive Managing Director  
O: 559.705.1000  
kevin@centralcacommercial.com  
CA #01516541

**KW COMMERCIAL**  
7520 N. Palm Ave #102  
Fresno, CA 93711

Each Office Independently Owned and Operated **CentralCaCommercial.com**