



# OFFICE SPACE FOR LEASE

3939 NEW WILKE RD ROLLING MEADOWS IL

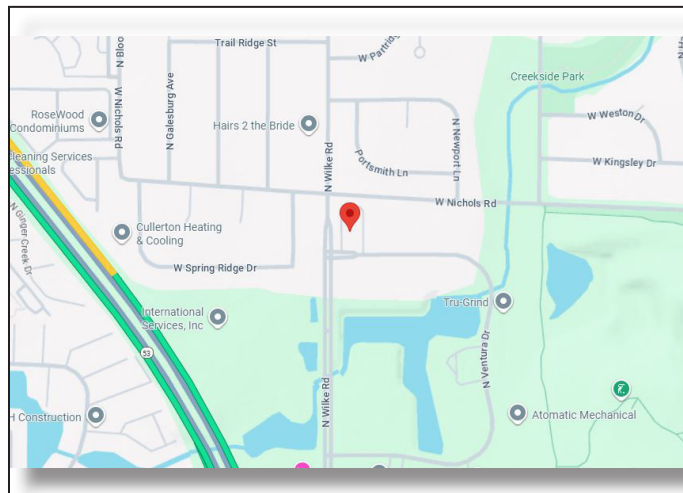


## BUILDING FEATURES:

- 6,500 SF Office Space Available For Lease
- Located just North of Dundee Rd & Rt 53
- Tenant controlled HVAC & 24-hour tenant access
- Comcast high-speed internet and cable available
- New Building Ownership & Property Management
- Operable windows
- Building signage available
- Single story with direct access from parking area to suite
- Asking Rent: \$15.50 PSF Modified Gross

## AVAILABLE SPACE:

Unit	SIZE	Rate
A	6,500 SF	\$15.50 PSF MG



## FOR MORE INFORMATION:

RANDY OLCZYK  
President/Principal  
Direct: 847.246.9611  
randy@chicagolandcommercial.com

TOM CALLAHAN  
Senior Vice President  
Direct: 847.246.9636  
Tom@chicagolandcommercial.com



**Chicagoland  
Commercial  
REAL ESTATE**

4811 Emerson Ave Suite 112, Palatine, IL

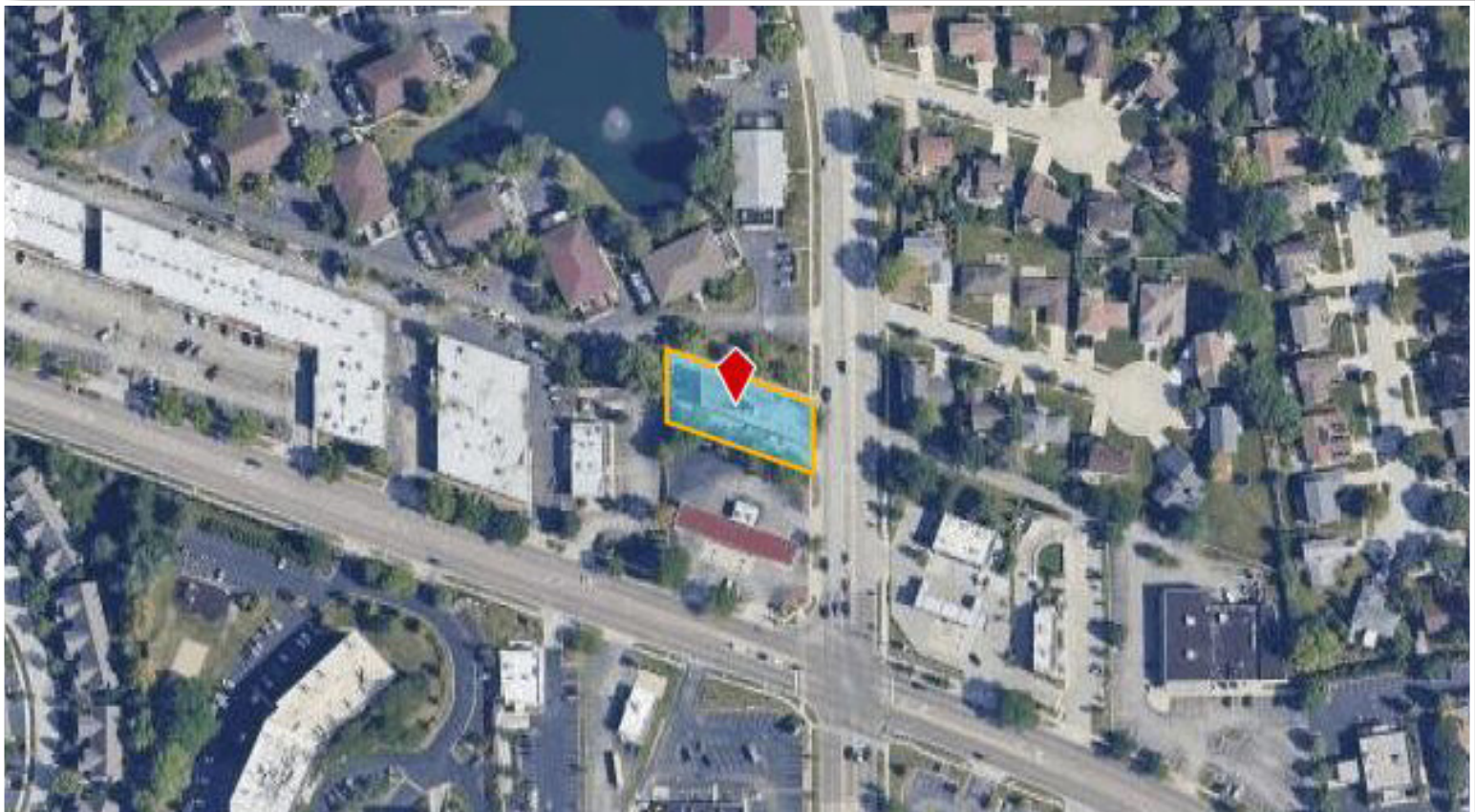
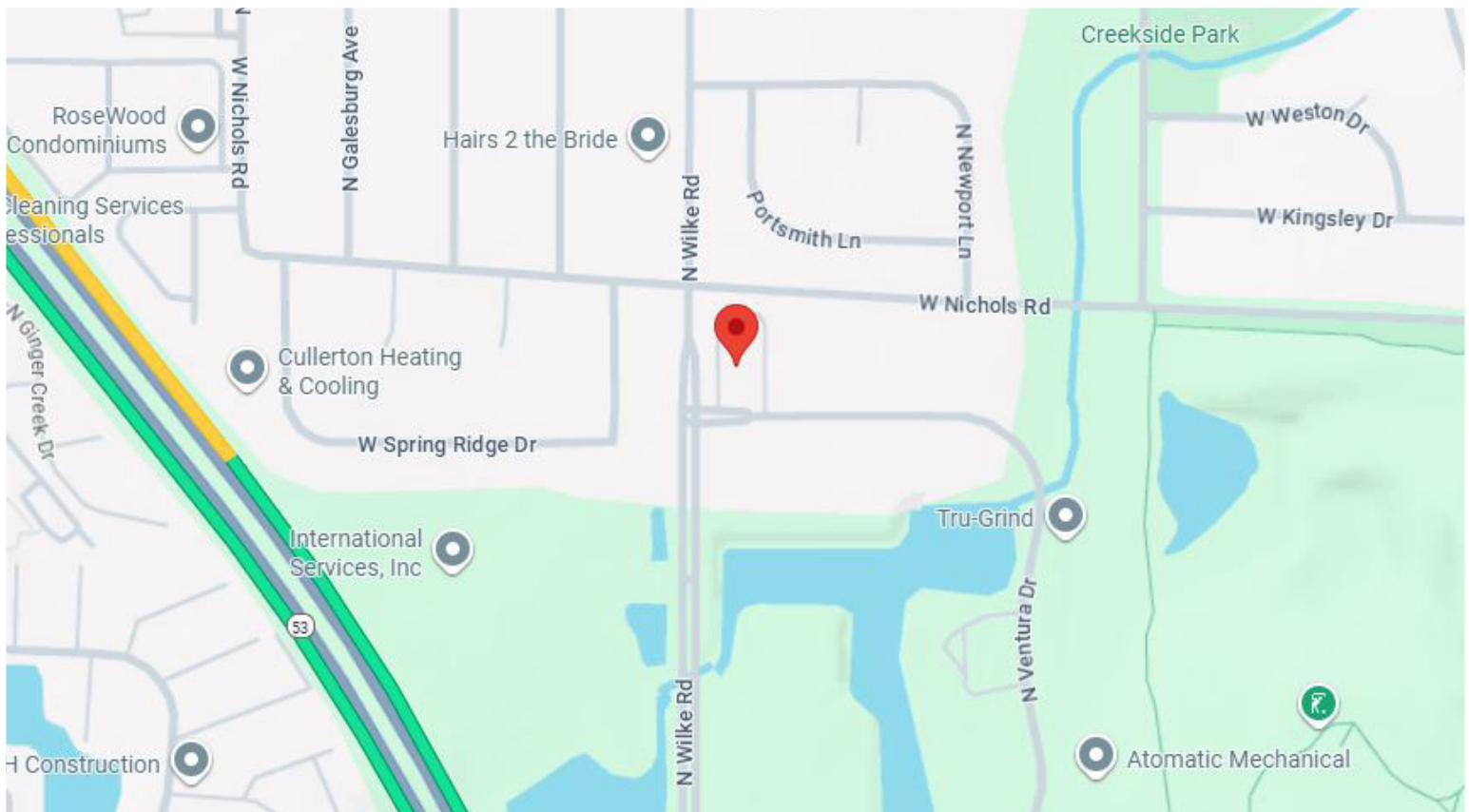




# OFFICE SPACE FOR LEASE

3939 New Wilke Rd Rolling Meadows IL

## AREA MAPS







# OFFICE SPACE FOR LEASE

3939 NEW WILKE RD ROLLING MEADOWS IL

## BUILDING PHOTOGRAPHS





# OFFICE SPACE FOR LEASE

3939 NEW WILKE RD ROLLING MEADOWS IL

6.500 SF SITE PLAN

