

MAJOR PRICE REDUCTION!

Sale Price: \$3,500,000 (\$478.53 PSF)

6035

W PICO BLVD

LOS ANGELES • CA 90035

FOR SALE

±7,314 SF RETAIL BUILDING

ON ±9,888 SF OF LAND

LEE & ASSOCIATES
COMMERCIAL REAL ESTATE SERVICES

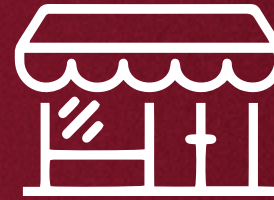
TEAMCLINE

LEE-ASSOCIATES.COM/DOWNTOWNLA

TEAM-CLINE.COM



Located at 6035 W Pico Blvd in Los Angeles, this freestanding retail building offers excellent visibility and versatility in a high-traffic corridor. The property features gated on-site parking and benefits from flexible C4 zoning, allowing for a wide range of commercial uses. With the potential to be demised into multiple units, it presents an ideal opportunity for owner-users or investors seeking multi-tenant income potential. Positioned within a TOC Tier 3 area, the site may also offer added development incentives, making it a strategic asset in a growing and well-connected neighborhood.



Free Standing Retail Building with Gated Parking



Can Potentially Demise into Multiple Units



Flexible C4 Zoning



TOC Tier 3

Available SF ±7,314

Prop Lot Size ±9,888

Price \$3,500,000

Price/SF \$478.53

Year Built 1948

Parking Spaces 4

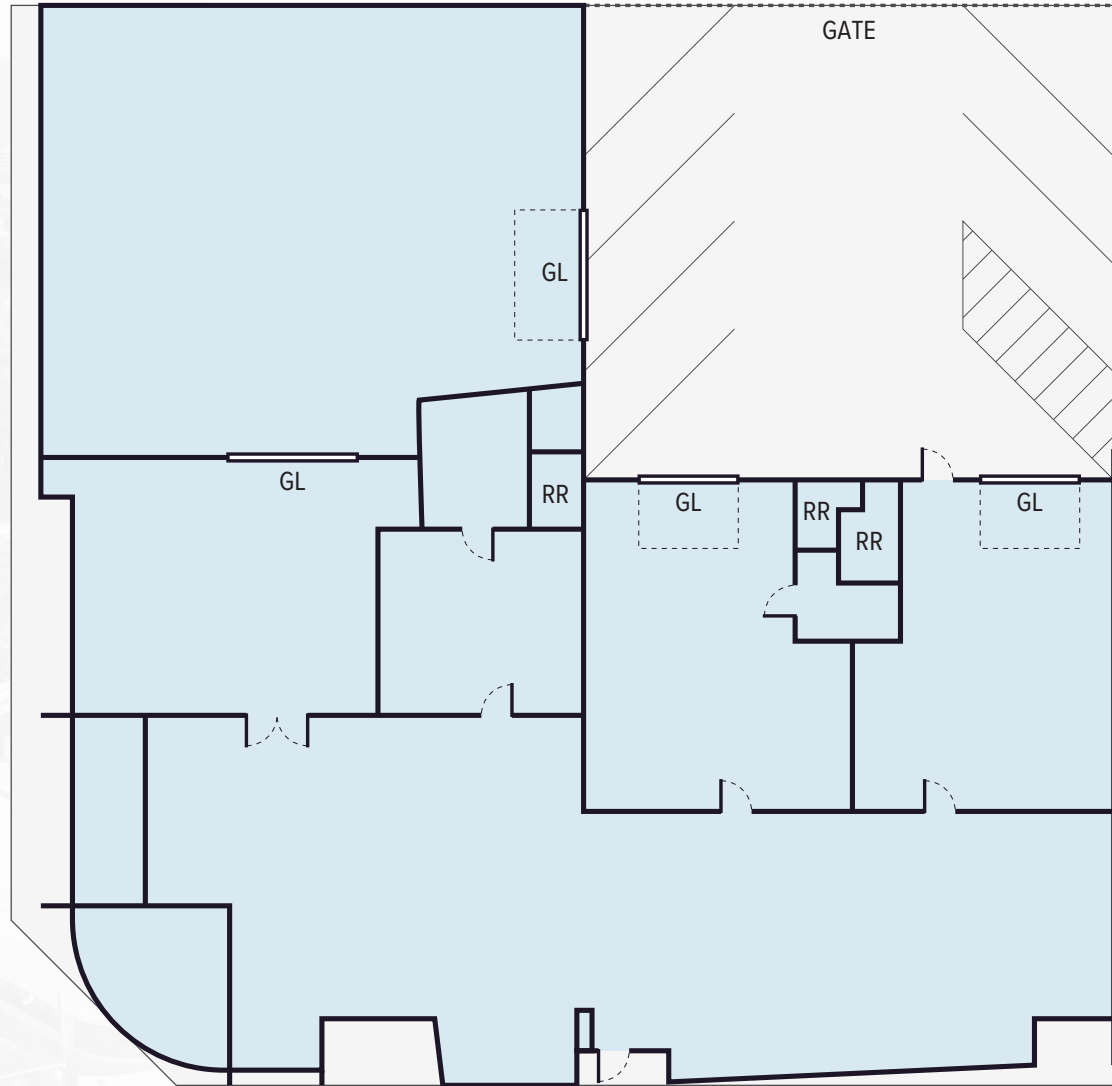
Specific Use General Street Retail

Zoning C4

APN 5087-016-017

PROPERTY INFORMATION

S CRESCENT HEIGHTS BLVD



W PICO BLVD



PROPERTY SITE PLAN

NOTE: Drawing not to scale. All measurements and sizes are approximate. Buyer to Verify.



PROPERTY PHOTOS



PROPERTY PHOTOS







For More Information,
Please Contact

Evan Jurgensen

Senior Vice President

ejurgensen@lee-associates.com

323.922.3733

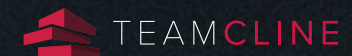
LIC NO 01967347

6035
W PICO BLVD
LOS ANGELES • CA 90035

Lee & Associates | Downtown Los Angeles
CORP ID 02174865

1201 N Main St
Los Angeles, CA 90012

323.922.3832



LEE-ASSOCIATES.COM/DOWNTOWNLA

TEAM-CLINE.COM

Tenant should verify all aspects of this brochure and material facts concerning the property including, but not limited to: square footage and composition of offices, building & land; whether the square footage includes interior dock or mezzanine areas; loading dock and door construction, size and condition; age and construction of building and all improvements; physical and structural condition of the building and all systems, including the HVAC, any elevators and roof; adequacy of floor loads for Tenant's intended use; ceiling and door clearance; ADA compliance; power; sprinkler calculations; zoning; permits, unpermitted improvements and permitted uses; taxes; whether the location of the property is within an incentive zone; and any other consideration that the Tenant deems to be material to its decision whether to purchase or lease the property. It is strongly recommended that Tenant utilize the services of professionals such as attorneys, accountants, architects, environmental consultants, surveyors, structural engineers and contractors to complete their due diligence prior to waiving any contingencies. It is also recommended that Tenant obtain any use permits or business licenses that may be material to the operation of their business.