

215 Mineola Avenue

ROSLYN, LONG ISLAND
NEW YORK



Location:	Roslyn Town Plaza
Ground Floor:	2,000 sf
Ceiling:	11 ft
Frontage:	24 ft on Mineola Ave
Former Tenant:	Green Cactus

Highlights:

- Turn-key restaurant space **FOR LEASE** in Roslyn on highly-trafficked Mineola Avenue.
- Located inside Roslyn Town Plaza with **50 on-site parking spaces**.
- 14 ft hood installed with gas service, ready for equipment hook-up.
- Large prep-area in the rear that can easily be converted to a full kitchen to increase dining capacity in the front.
- **NO** key money.
- All non-competing uses with existing co-tenancies will be considered.

Exclusive Leasing Broker

Keat Chew

keat@kineticreg.com

347.571.3338

NEIGHBORING

TENANTS

DUNKIN'

RAVAGH
PERSIAN GRILL



[solidcore]



verizon

MATHNASIUM

MATTEOS
trattoria • bar

LIMARX
PHARMACY



Domino's



Bank

drybar

SKINNYPIZZA & ACAI
Thin & Crispy Pizza - Organic Bowls & Smoothies

JOHNSON
FITNESS & WELLNESS



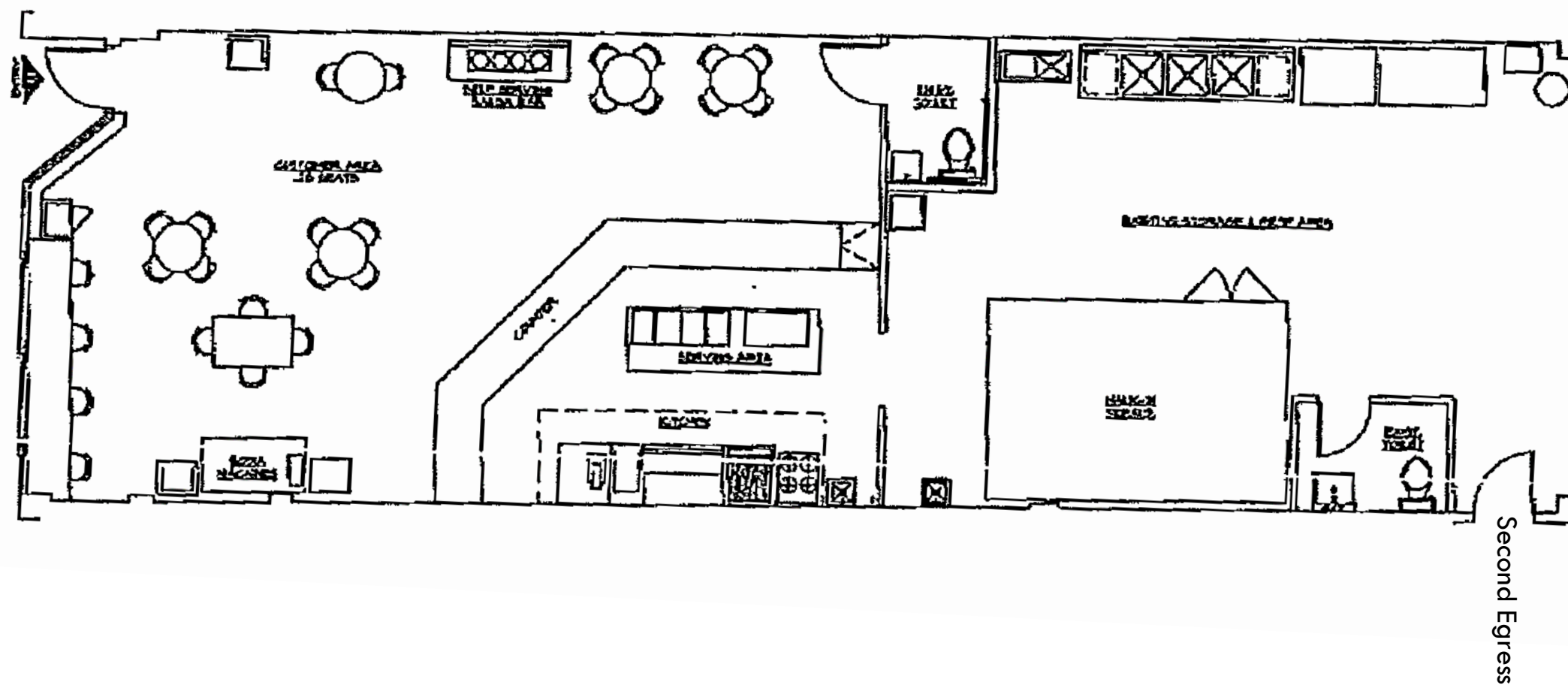
LAYERS
BAKESHOP

PHOTOS



FLOOR PLAN

MINEOLA AVENUE



SITE PLAN



[illegible]