

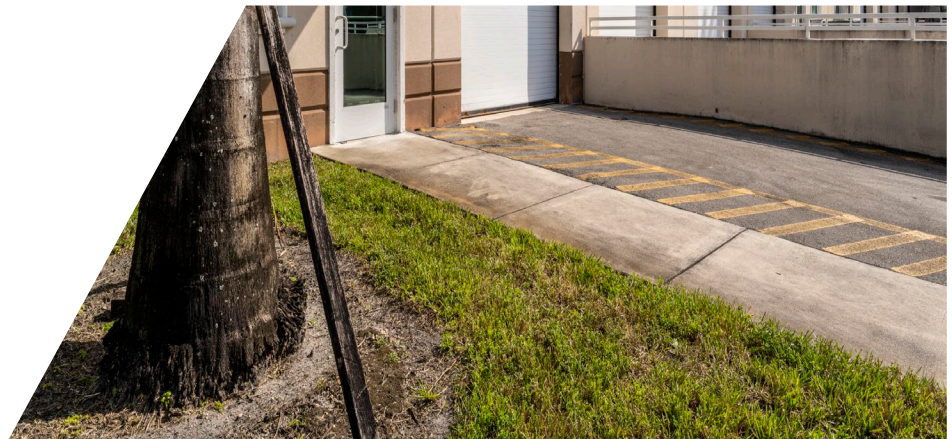


FOR LEASE 6,303 SF

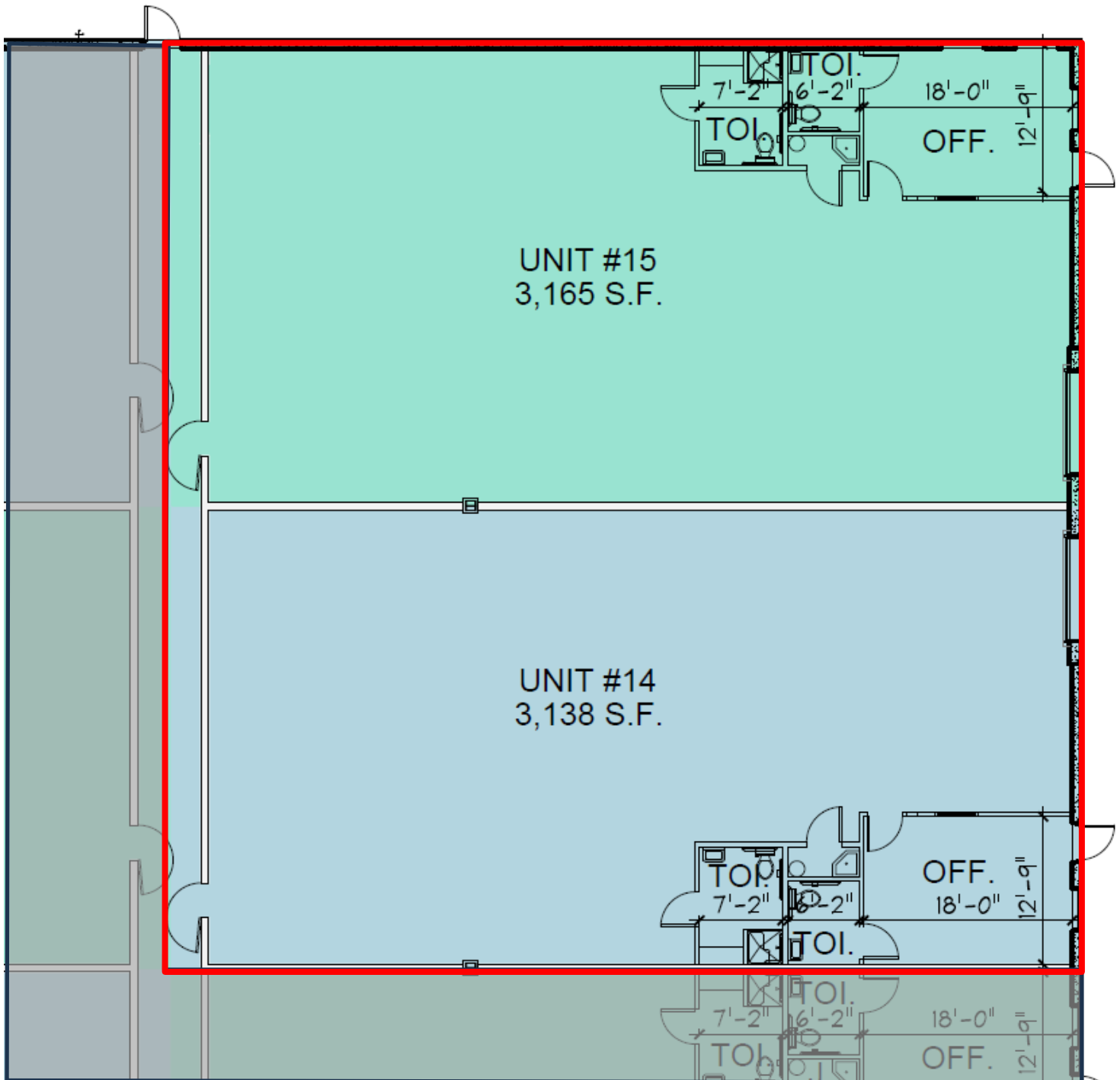
7429

# RIVIERA BLVD

MIRAMAR  
COMMERCE PARK  
Building C  
*Miramar, FL*



# SPACE LAYOUT



# PROPERTY HIGHLIGHTS



Space Available:	Unit 14/15 – 6,303 SF. Demising wall is in place.
------------------	---

Office Area:	±740 SF
--------------	---------

Clear Height:	32'
---------------	-----

Parking:	1 : 1,000
----------	-----------

Drive-ins:	2
------------	---

Fire Sprinklered:	Yes
-------------------	-----

Construction:	Tilt Wall
---------------	-----------

Loading:	Front Loading
----------	---------------

Lighting:	LED Throughout
-----------	----------------

Available:	November 1, 2025
------------	------------------

Base Rate:	\$23.50 PSF NNN
------------	-----------------

OpEx:	\$6.60 PSF
-------	------------



# DEMOGRAPHICS 5 MILES

**489,879**

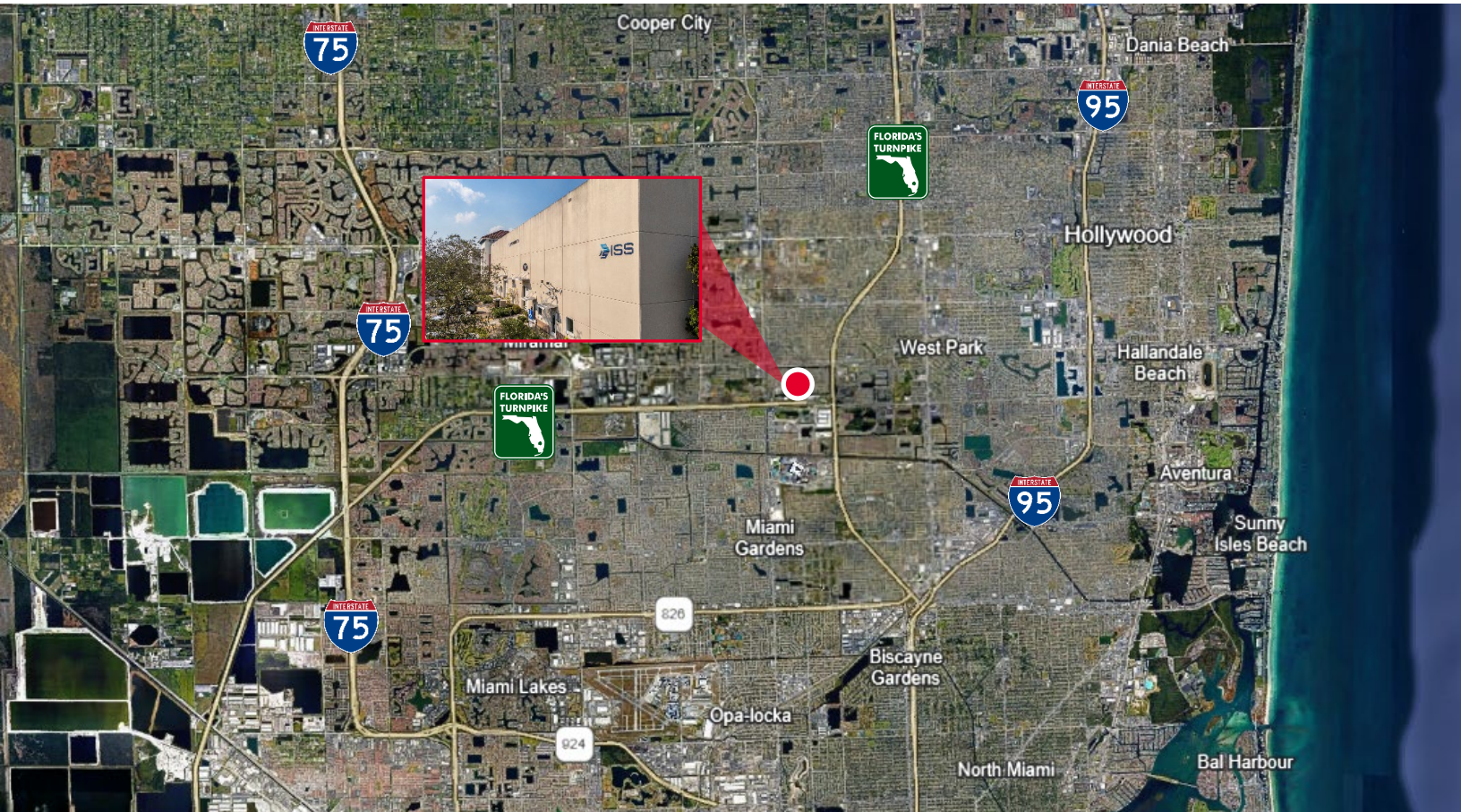
**Population**

**\$90,859**

**AVG Household Income**

**39**

**Median Age**



## CONTACTS

**CHRIS METZGER, SIOR**

Vice Chairman

+1 954 415 9155

[chris.metzger@cushwake.com](mailto:chris.metzger@cushwake.com)

**ERIC CANTOR**

Associate

+1 561 227 2068

[eric.cantor@cushwake.com](mailto:eric.cantor@cushwake.com)