

1548 BOND ST | NAPERVILLE

FOR LEASE



NEW OWNERSHIP

BUILDING HIGHLIGHTS

- Available Space: 1,573 SF
- Asking Rate: \$21.00 PSF/YR MG
- Single Story with Common Area Restrooms
- Contemporary Office Spaces
- Parking Ratio: 4.45/1,000 SF
- Built in 2004



VERSA
REAL ESTATE SERVICES

AREA AMENITIES

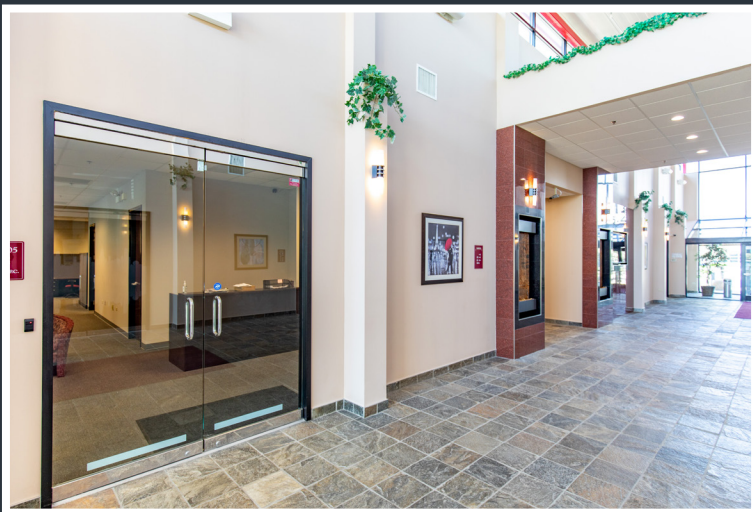
Close Proximity to the I-88/Route 59 Exit

Large Employment Base in Naperville/Aurora

Block from Pace Stop

Minutes to Route 59 Metra

Numerous Fast Serve and Sit Down Dining Nearby



CALL OR TEXT FOR MORE INFO:



JOHN MILLNER, CCIM
PRINCIPAL
630.480.6342
JMillner@VersaRES.com



RYAN MOEN, SIOR
PRINCIPAL
630.480.6346
RMoen@VersaRES.com

VERSA
REAL ESTATE SERVICES