

# West Cheyenne Center

7350 W. Cheyenne Ave. | Las Vegas, NV 89129

## Retail for Lease

1,100 SF



Leasing Information:  
702.221.8226

**Craig Summers**  
NRE:S..0077796  
Vice President  
(714)392-3112  
Craig.Summers@lpc.com

# Lincoln

4755 Dean Martin Drive  
Las Vegas, NV 89013

[www.lpc.com](http://www.lpc.com)

# West Cheyenne Center

7350 W. Cheyenne Ave. | Las Vegas, NV 89129

## Retail for Lease

1,100 SF



### Property Overview

- ±1,100-1,333 SF retail space available
- Rates from \$1.35 NNN / CAM \$.048
- Established retail center
- High traffic counts

### Highlights

- Cheyenne frontage
- Close proximity to Mountain View Hospital

### Current Tenants

- Check City
- Dog Grooming
- Magoo's
- Massage Therapy

### Traffic Counts

W. Cheyenne Ave.	N. Tenaya Way	46,000 VPD
W. Cheyenne Ave.	N. Buffalo Dr.	53,021 VPD
N. Tenaya Way	W. Cheyenne Ave.	23,188 VPD

### Demographics

	1 Mile	3 Miles	5 Miles
Population	16,790	79,738	174,426
Av. Household Income	\$51,007	\$54,881	\$54,517
Total Housing Units	6,793	30,448	66,058

### Craig Summers

(714) 392-3112  
Craig.Summers@lpc.com

# Lincoln

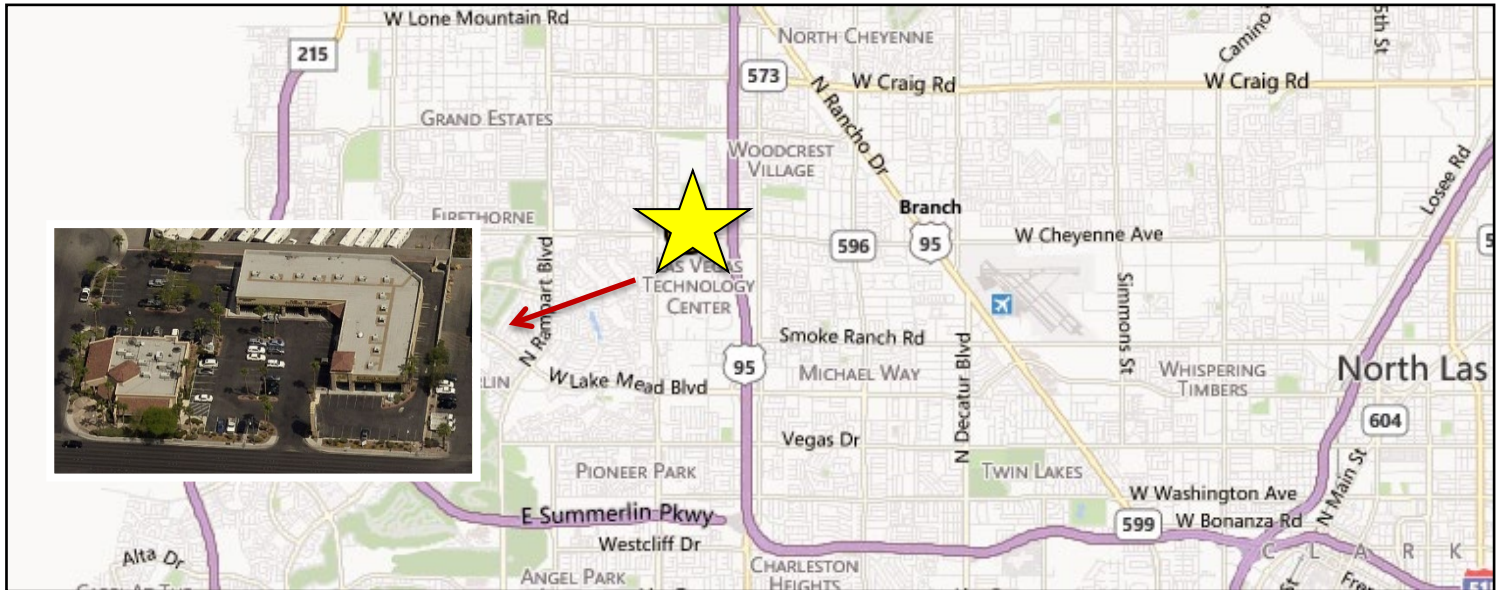
# West Cheyenne Center

7350 W. Cheyenne Ave. | Las Vegas, NV 89129

# Retail for Lease

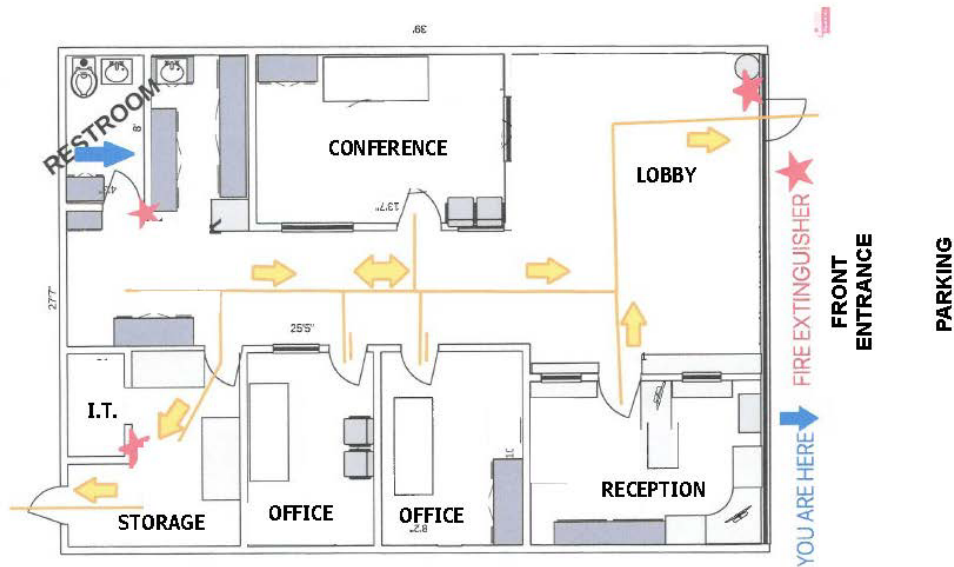
1,100 SF

## Location Overview



## Suite Available

### Floor Plan



Suite	Total SF	Rate Per SF	CAM	Space Description
103	1,100	\$1.35	\$0.48	Front Counter - Open

**Craig Summers**  
 (714) 392-3112  
 Craig.Summer@lpc.com

**Lincoln**