

124 Chatsworth Avenue

Larchmont, NY | Westchester County

Southwest corner of Chatsworth Avenue & Palmer Avenue in Downtown Larchmont

Ground Floor 3,018 SF
Mezzanine · Basement



135 Fifth Avenue | 9th Floor
212.687.2400
www.atlanticretailnyc.com

Colleen Morrissey
212.687.2400
cmorrissey@atlanticretail.com

Joe Mastromonaco
212.687.2400
jmastromonaco@atlanticretail.com

 **Atlantic**
RETAIL | NYC

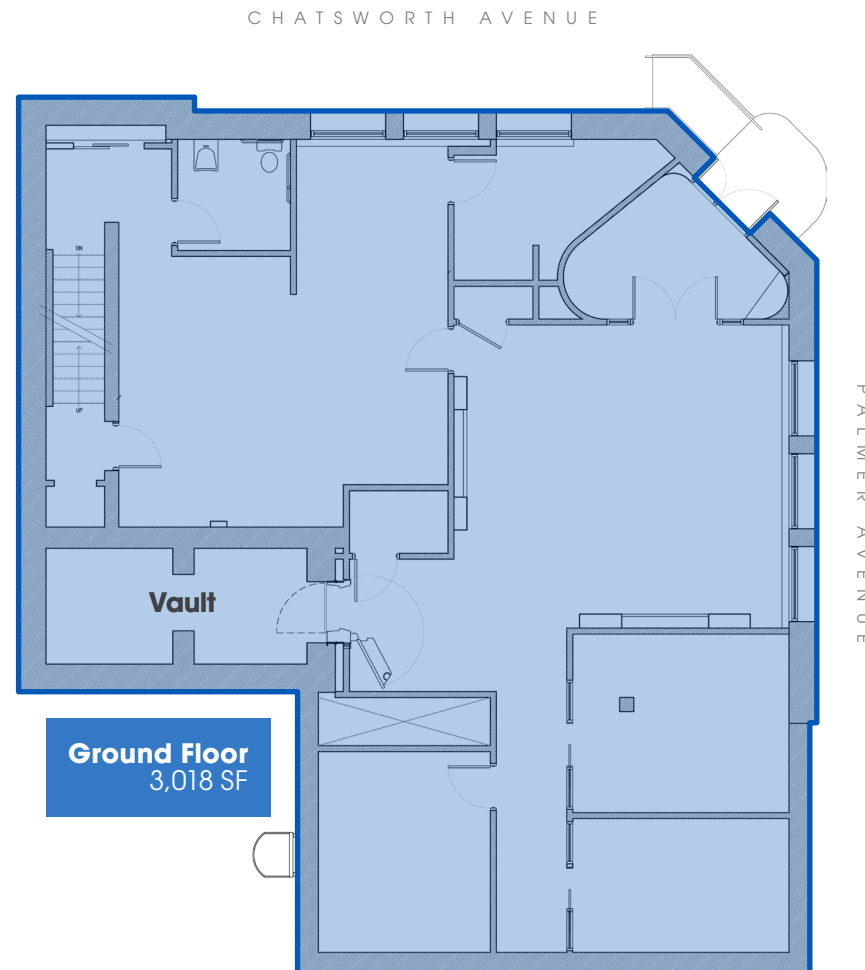
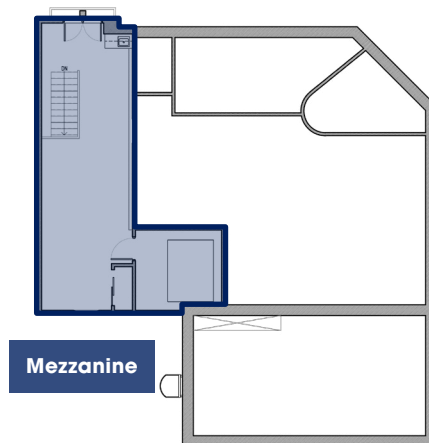
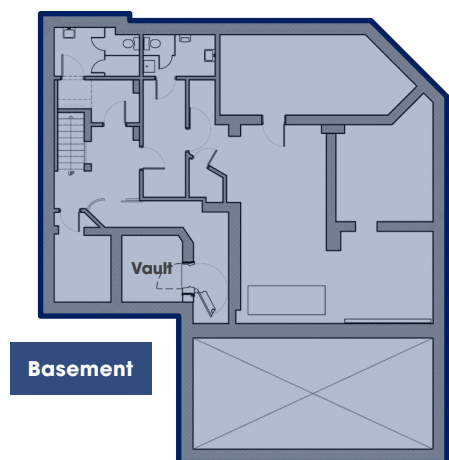


Property Details

Ground Floor 3,018 SF

Comments

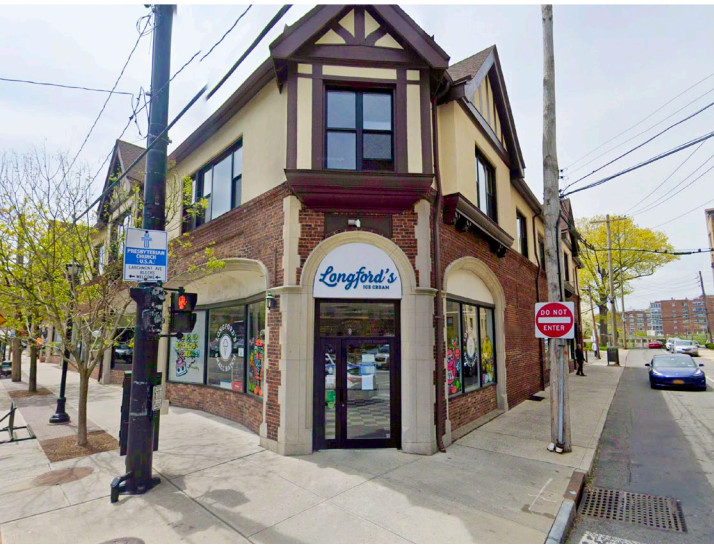
- Includes Mezzanine & Basement
- Former Chase Bank Private Client Branch
- Gas available to premises
- Walking distance to Larchmont Train Station
- Potential for Outdoor Space



Radius	1 Mile	3 Mile
Population	20,665	128,853
Daytime Population	18,020	114,325
Households	7,534	45,679
Median Household Income	\$169,198	\$118,711
Household Income \$200,000+	45.8%	32.7%

Drive Time	5 Min	10 Min
Population	31,503	147,872
Daytime Population	31,360	136,793
Households	11,405	55,429
Median Household Income	\$137,055	\$97,699
Household Income \$200,000+	39.4%	25.7%





124 Chatsworth Avenue

Larchmont, NY | Westchester County



135 Fifth Avenue | 9th Floor
New York, New York 10010
212.687.2400
www.atlanticretailnyc.com

Colleen Morrissey
212.687.2400
cmorrissey@atlanticretail.com

Joe Mastromonaco
212.687.2400
jmastromonaco@atlanticretail.com