



MW

MOUNTAIN WEST
COMMERCIAL REAL ESTATE

Mister

jiffylube

O'Reilly
AUTO PARTS

SITE

VINEYARD SUB-GROUND LEASE

GENEVA ROAD • VINEYARD • UTAH • 84059

FOR SUB-GROUND LEASE

PROPERTY SPECS

- Approx. 1.15 Acres
- World-Class Master Planned Community
- Fastest Growing City in Utah
- Surrounded by New Commercial & Residential Construction
- Excellent Access to/from I-15
- Great Traffic Counts on Geneva Road
- Contact Listing Agents for Pricing
- Nearby tenants include: O'Reilly's, Mister Car Wash, Jiffy Lube, Top Golf, The Yard

O'Reilly
AUTO PARTS

Mister

jiffylube

TOPGOLF

TheYard



15,694
2023 EST.
POPULATION



5,119
2023 EST.
HOUSEHOLDS



\$112,221
2023 EST.
AVERAGE HH
INCOME

1 MILE

94,120
2023 EST.
POPULATION

29,124
2023 EST.
HOUSEHOLDS

\$106,480
2023 EST.
AVERAGE HH
INCOME

3 MILE

189,933
2023 EST.
POPULATION

58,808
2023 EST.
HOUSEHOLDS

\$113,259
2023 EST.
AVERAGE HH
INCOME

5 MILE

CONTACT:

RYAN STEWART

rstewart@mtwest.com
direct 801.578.5541
[View Profile](#)

SCOTT BRADY

sbrady@mtwest.com
direct 801.456.8804
[View Profile](#)

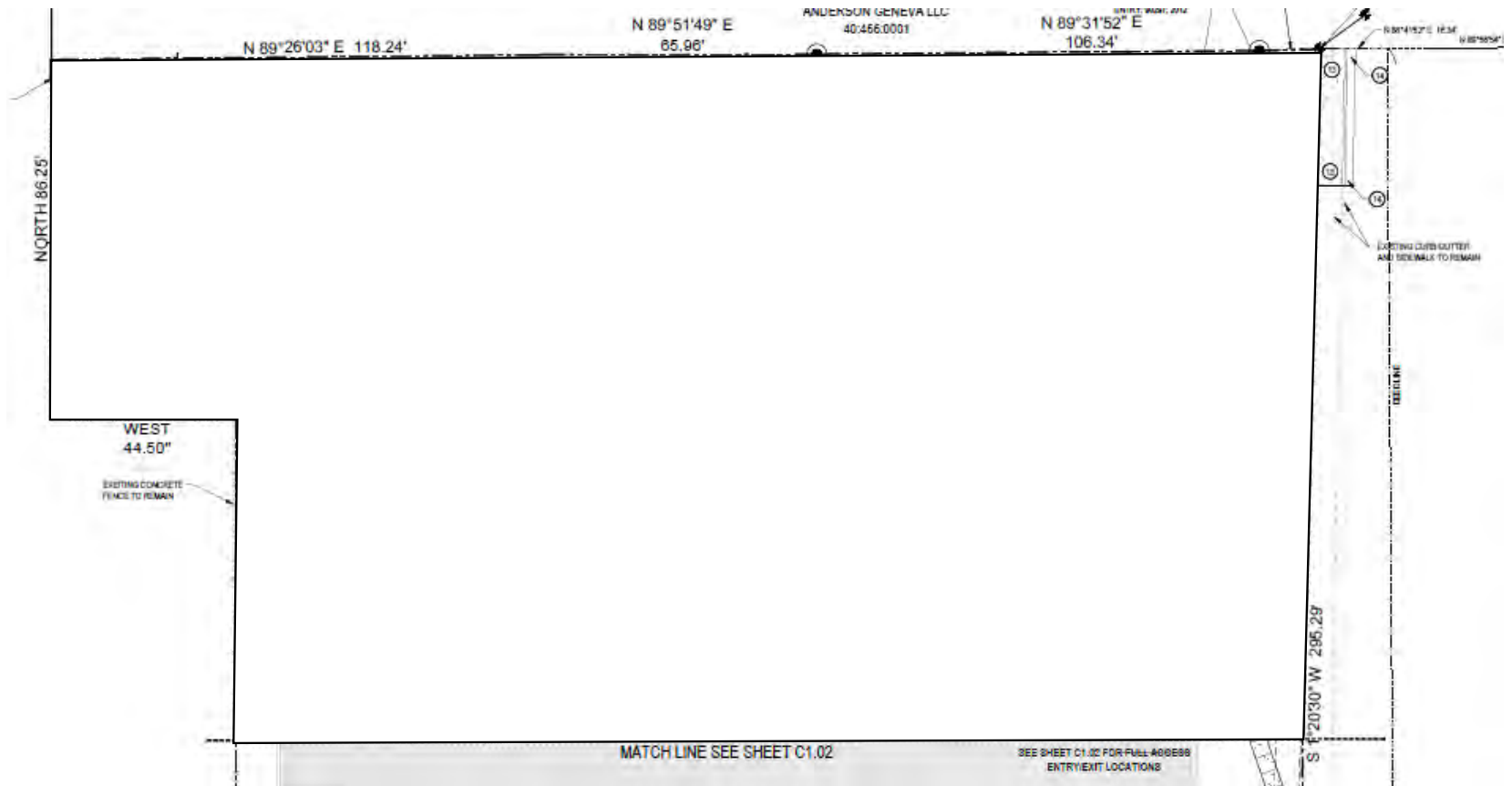


MW

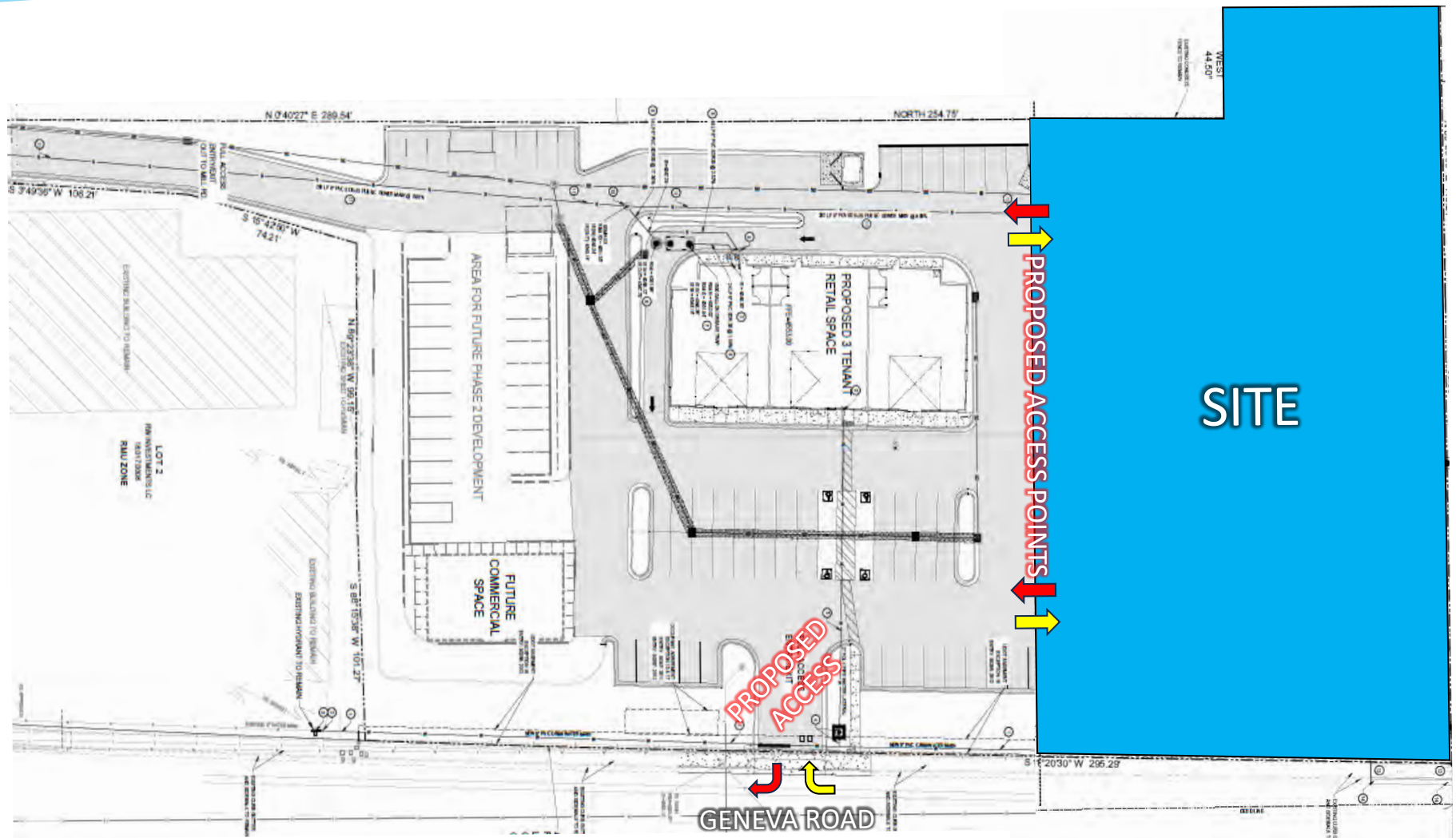
FULL SERVICE COMMERCIAL REAL ESTATE

VINEYARD SUB-GROUND LEASE

PROPERTY MEASUREMENTS



VINEYARD SUB-GROUND LEASE



This statement with the information it contains is given with the understanding that all negotiations relating to the purchase, renting or leasing of the property described above shall be conducted through this office. The above information while not guaranteed has been secured from sources we believe to be reliable.