



2000 BOUL. INDUSTRIEL CHAMBLY, QC

INDUSTRIEL - À LOUER
INDUSTRIAL - FOR LEASE

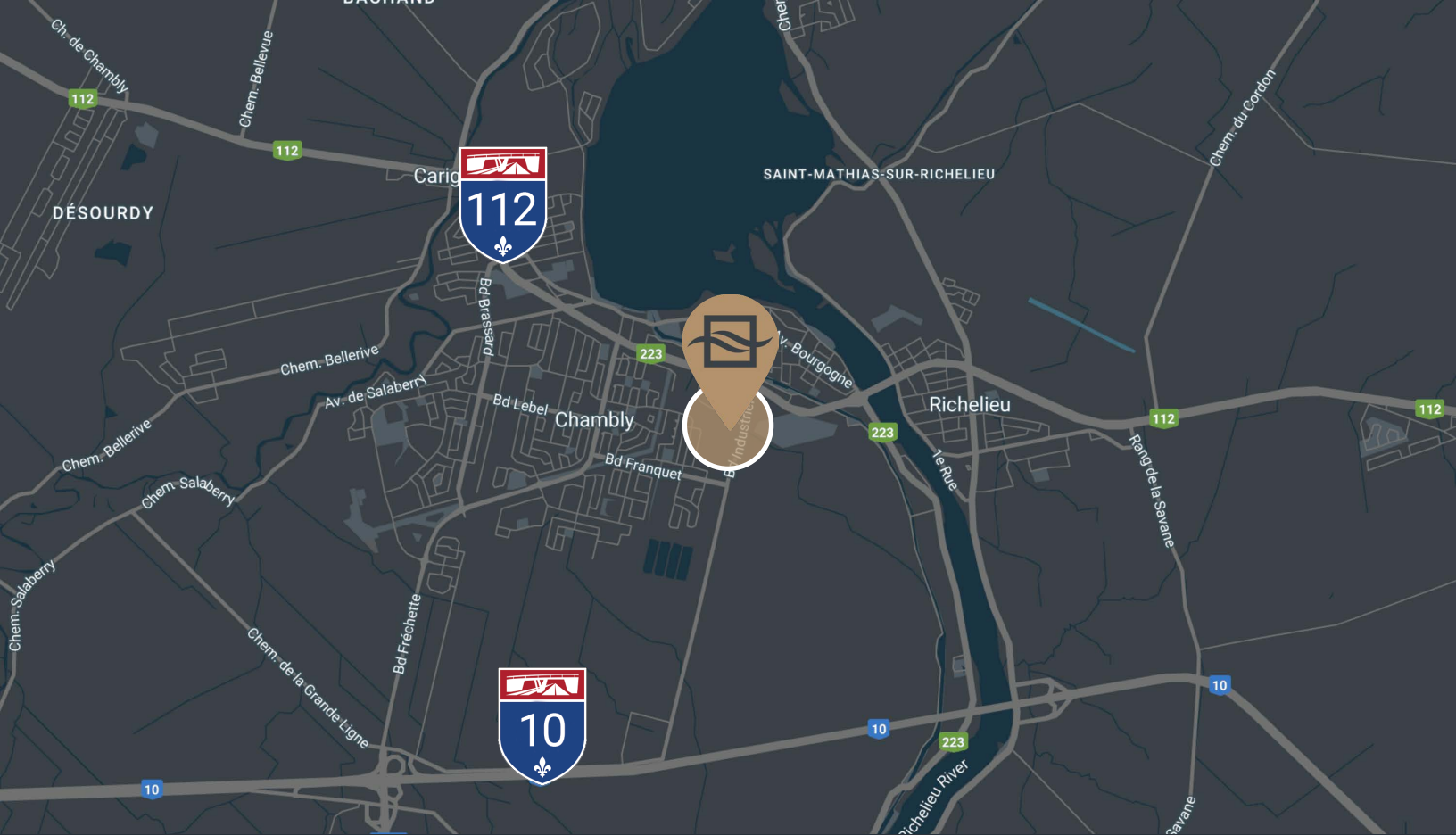
169 500 PI. CA. DISPONIBLE - 169 500 SQ. FT. AVAILABLE

- **Près de l'autoroute 10 et 112** | *Close to Highway 10 and 112*
- **6 quais de chargement** | *6 loading docks*
- **150 000 pi. ca. d'espace de rangement extérieur** | *150 000 sq. ft. of outdoor storage space*
- **14 portes au sol** | *14 drive-in doors*
- **Hauteur libre de 14', 20', 24'** | *Clear height of 14', 20', 24'*
- **Gicleurs ESFR** | *ESFR sprinklers*
- **50 places de stationnement** | *50 parking stalls*



BRASSWATER

245, avenue Victoria,
Suite 801
Westmount, Qc | H3Z 2M6
T: +1 514 535 4444
www.brasswater.ca



Zonage
Zoning

Industriel
Industrial

Surfaces disponibles (PI CA)
Available Areas (SF)

169 500

Portes au sol
Drive-in doors

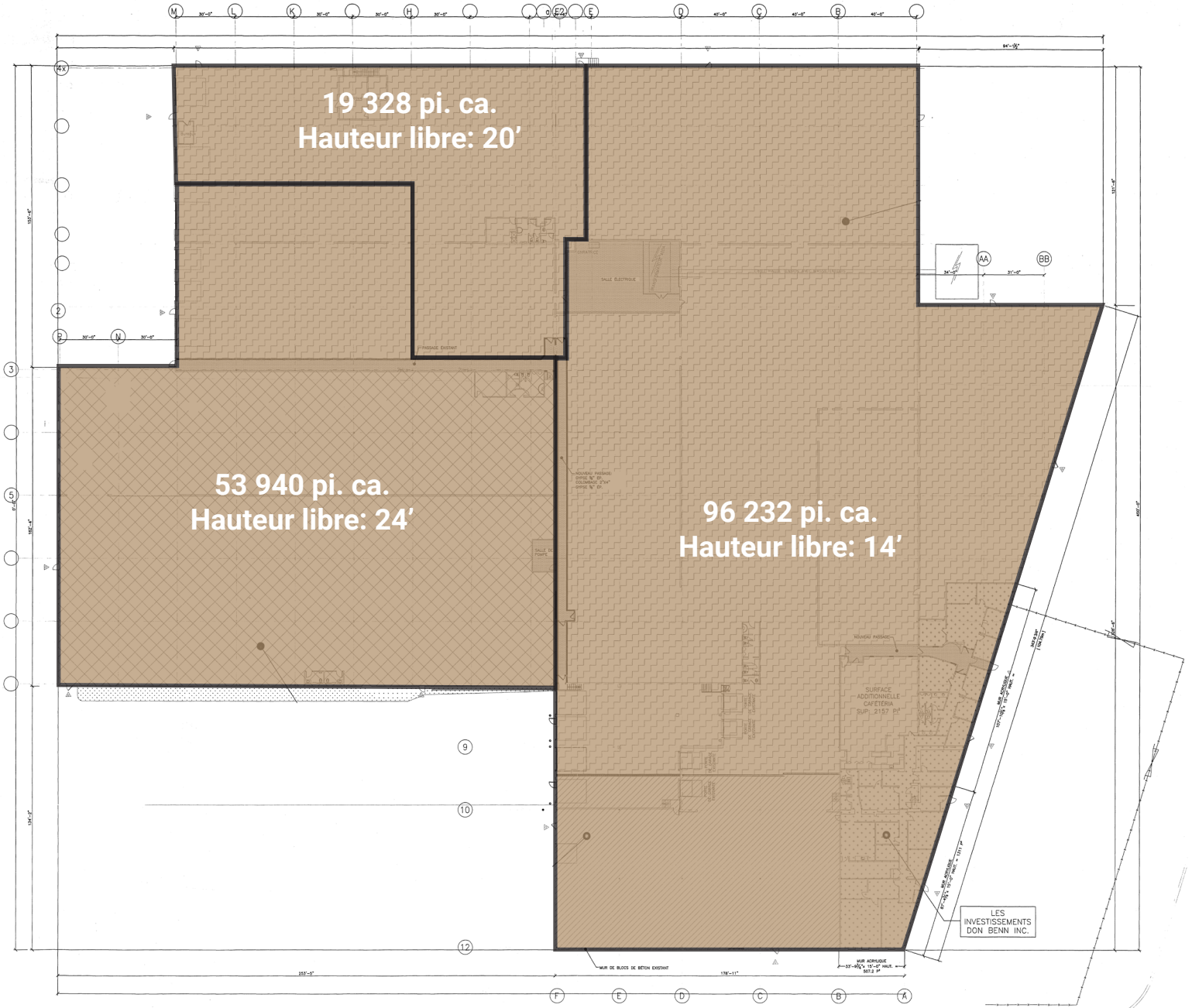
14

Quais de chargement
Loading docks

6

PLAN DU BÂTIMENT

169 500 pi. ca.



VUE DU TERRAIN

150 000 pi. ca.



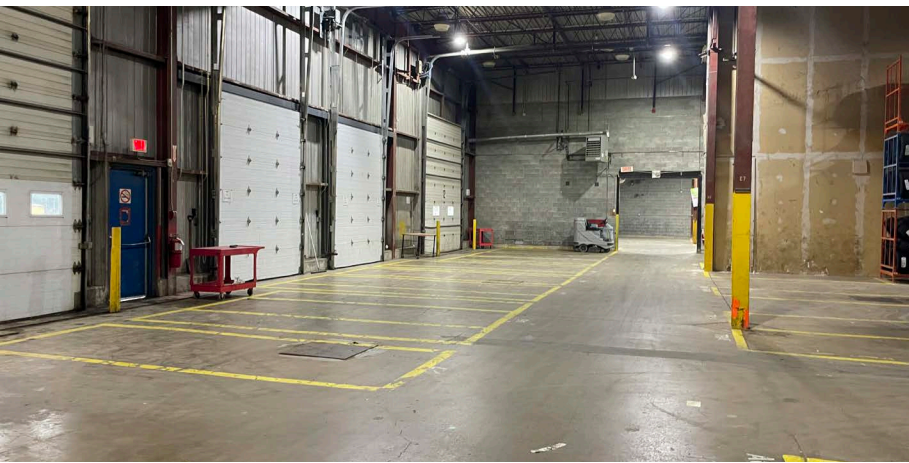
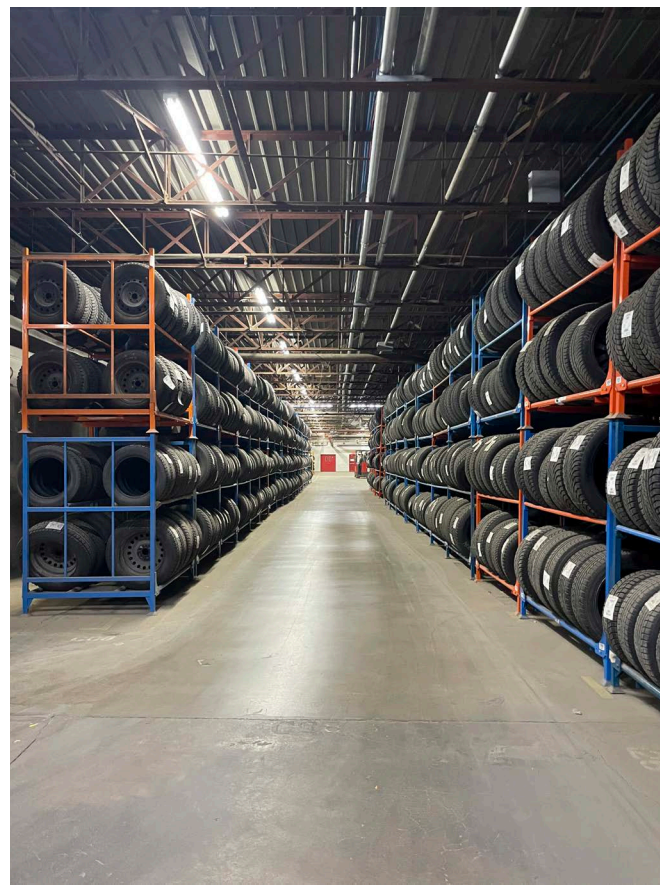
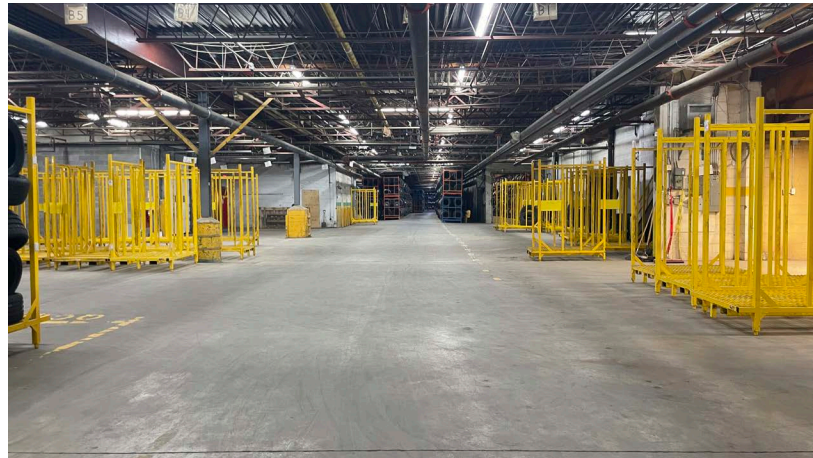
EMPLACEMENT STRATÉGIQUE POUR LIVRAISON ET EXPÉDITION RAPIDE

STRATEGIC LOCATION FOR FAST DELIVERY AND SHIPPING



TERRAIN ADDITIONNEL DE 150 000 PI. CA. POUVANT ÊTRE UTILISÉ POUR STOCKER JUSQU'À 140 REMORQUES

ADDITIONAL 150,000 FT. CA. CAN BE USED TO STORE UP TO 140 TRAILERS





CONTACTEZ-NOUS – CONTACT US

ÉQUIPE DE LOCATION LEASING TEAM

T: +1 514 535 4444
leasing@brasswater.ca

GIL KASTNER

Chef de la direction location & développement des affaires
Chief Leasing Director & Business Development Officer

T: +1 514 592 5738
gkastner@brasswater.ca



BRASSWATER

245, avenue Victoria,
Suite 801
Westmount, Qc | H3Z 2M6
T: +1 514 535 4444
www.brasswater.ca