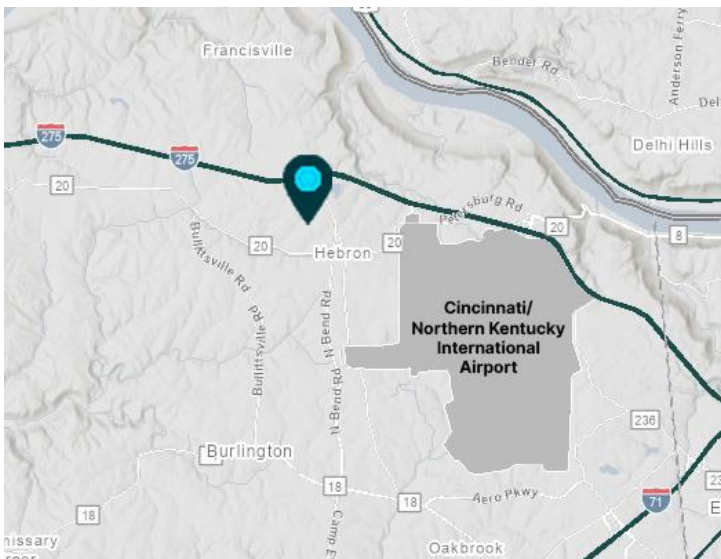


111,369 SF

**2305 Global Way
Hebron, KY 41048**

Prologis Park West P



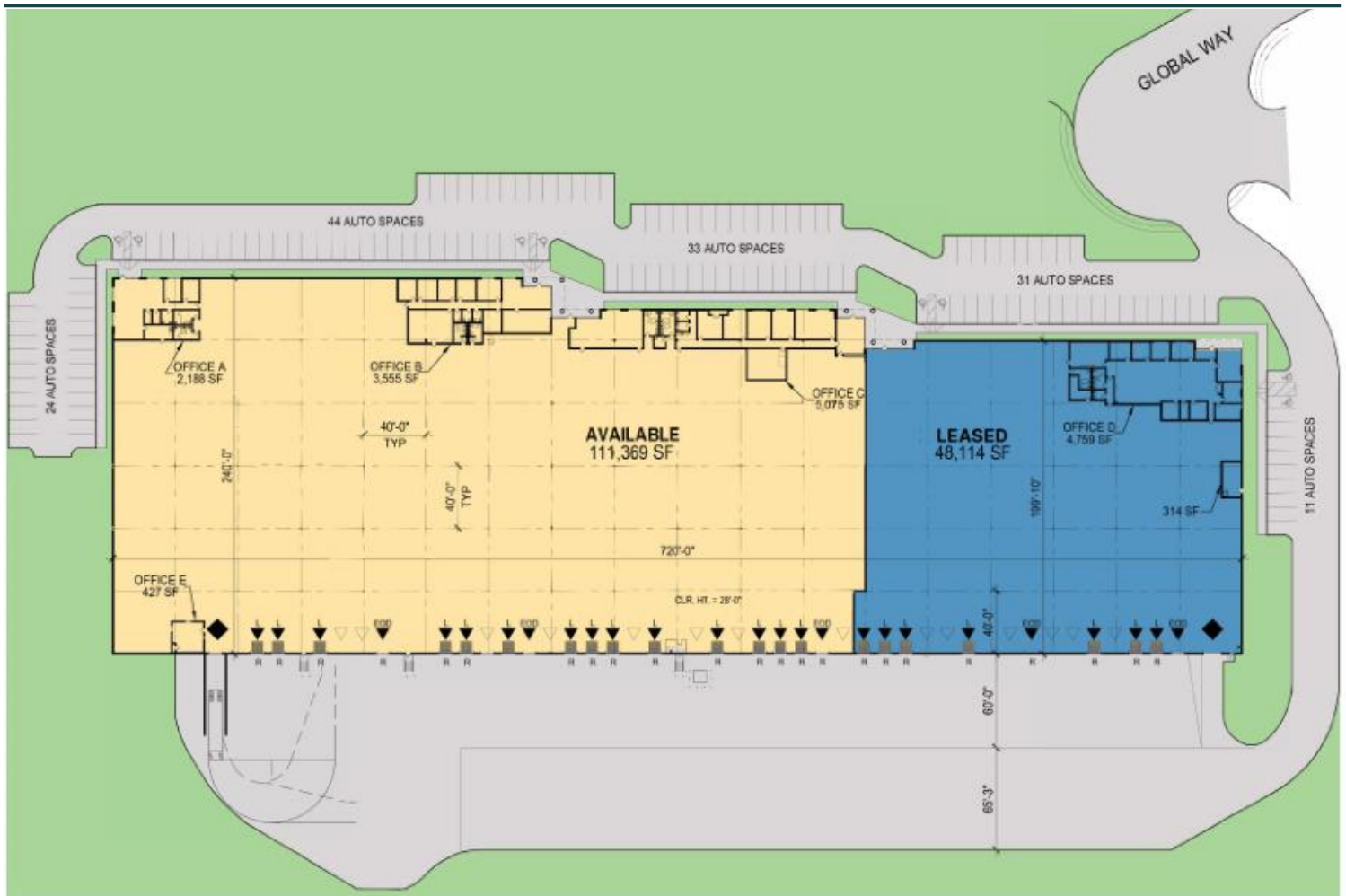
- Direct access to Interstate-275 and nearby I-71/I-75, providing unmatched connectivity for regional and national transportation
- Dedicated [Prologis Customer Experience Team](#)

Property Features

Available Space	111,369 SF
Office SF	11,245 SF
Clear Height	28'
Column Spacing	40' x 40'
Dock Doors	17
Drive-in Doors	1
Trailer Parking Spaces	N/A
Car Parking Spaces	100
Electrical Service	1,000 amps
Sprinkler	ESFR
Lighting	LED Motion Sensor



Unlock the full potential of your warehouse with one strategic, single-source partner.



LEGEND:

- ▲ DOCK POSITION
- ▲ DOCK POSITION W/ LEVELER
- ▲ DOCK POSITION W/EDGE OF DOCK LEVELER
- △ FUTURE DOCK POSITION
- ◆ DRIVE-IN DOOR
- R RESTRAINT



Cushman & Wakefield
Jeff Bender

jeff.bender@cushwake.com
ph +1 513 763 3046

Cushman & Wakefield
Seattle Stein

seattle.stein@cushwake.com
ph +1 513 763 3027

Cushman & Wakefield
Dave Kelly

dave.kelly@cushwake.com
ph +1 513 763 3009

Prologis
Dan Colletto

dcolletto@prologis.com
ph +1 513 346 6317
prologis.com