

EYDE DEVELOPMENT

6607 WEST ST. JOSEPH HIGHWAY
LANSING, MI 48917



FOR LEASE

BUILDING SQUARE FOOTAGE:

- 17,293 SF Building - 6607 W. St. Joseph Hwy

ADVANTAGES:

- On site parking available

FEATURES/AMENITIES:

- Close proximity to restaurants, gyms, dry cleaners, grocery and retail

STRATEGIC LOCATION:

- Strategically located at the corner of S. Creyts Road and W. Saint Joseph Highway
- Easy access to highway



CONTACT

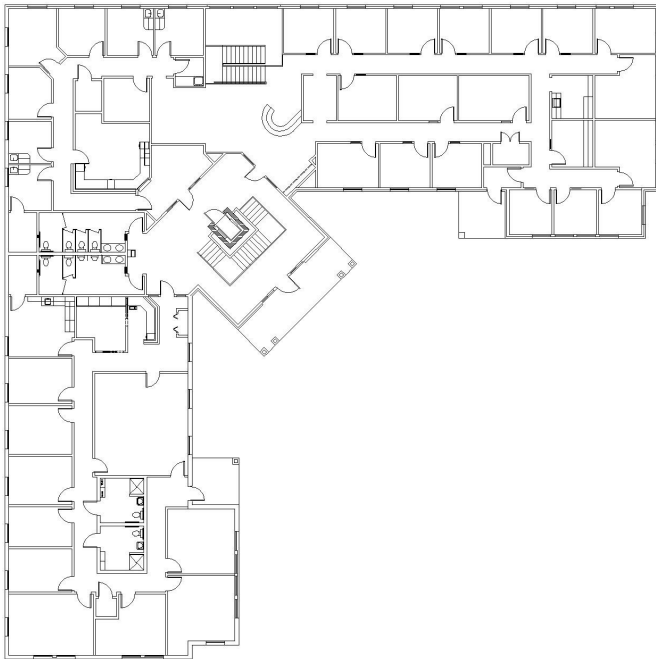
Eyde Development
517-903-3933 | eyde.com

EYDE DEVELOPMENT

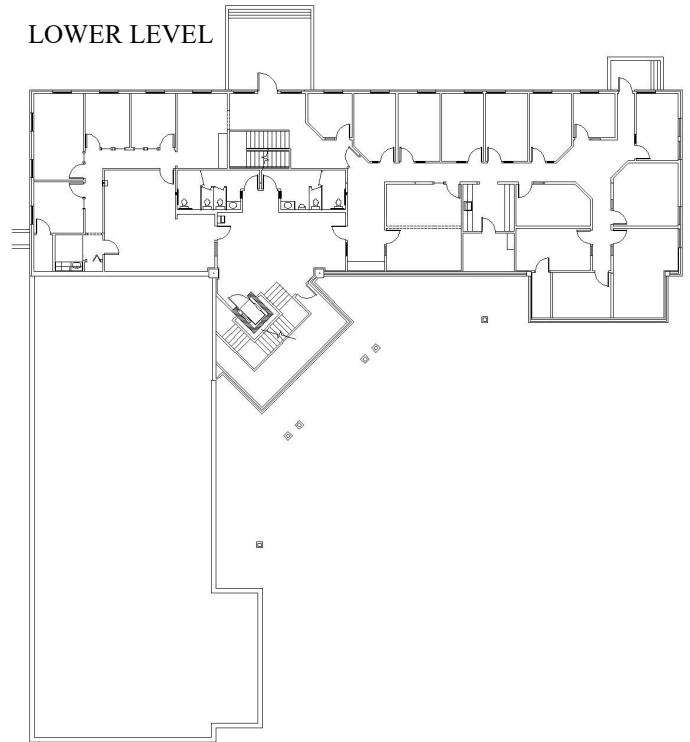
6607 WEST ST. JOSEPH HIGHWAY
LANSING, MI 48917

BUILDING PLANS

UPPER LEVEL



LOWER LEVEL



CONTACT

Eyde Development
517-903-3933 | eyde.com

| Eyde Development | 300 S. Washington Square #400 Lansing, MI 48933 |
| Phone: 517-903-3933 | Fax: 517-484-5695 | www.eyde.com |