

STREAM

17,675 SF

REGENCY DR.

E. AIRPORT FRWY.

3403

E. JOHN CARPENTER FRWY.

GIOVANNI SCARDINO

giovanni.scardino@streamrealty.com  
214.210.6607

JACK RATHE

jack.rathe@streamrealty.com  
972.655.9067

17,675 SF AVAILABLE  
FOR LEASE

100% HVAC FACILITY



15 MINUTES TO DOWNTOWN DALLAS

PRIME FRONTAGE ROAD LOCATION



# 3403

E. JOHN CARPENTER FRWY.

## DETAILS

**AVAILABLE:** +/- 17,675 SF on 1.43 Acres

**HVAC:** 100%

**CLEAR HEIGHT:** +/- 14'

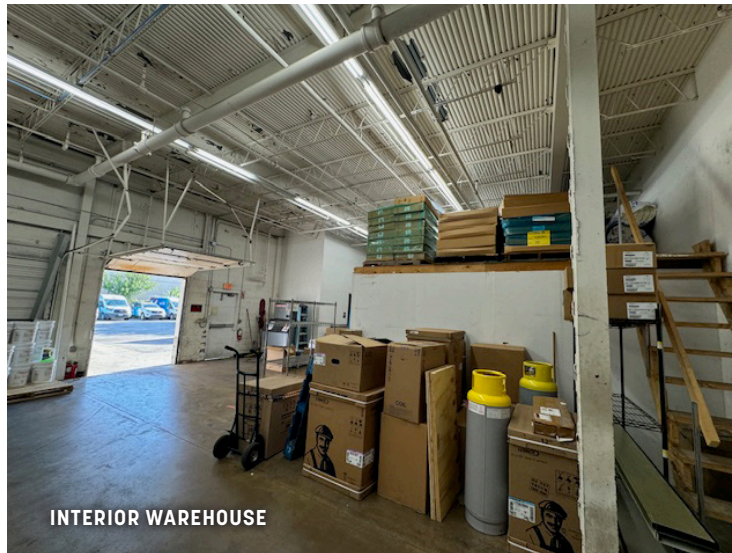
**PARKING:** +/- 90 Spaces

**OTHER:** Sprinklered  
Local Ownership & Management

**LOADING:** (1) Dock High Platform with Edge of Dock Leveler  
(1) Semi-Dock High Platform  
Grade-Level Loading  
3rd Grade-Level Door into Storage Area



INTERIOR WAREHOUSE



INTERIOR WAREHOUSE



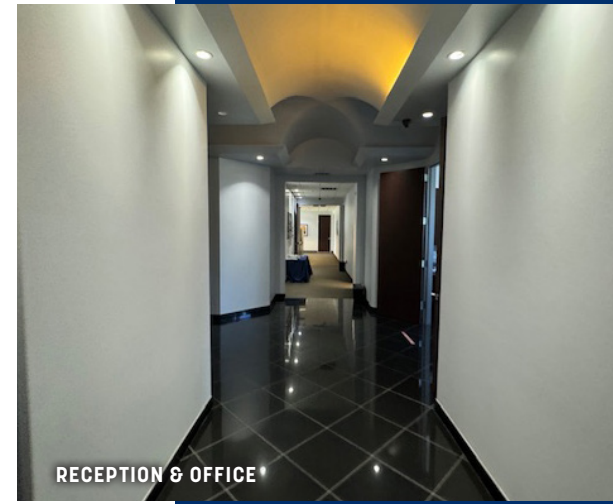
RECEPTION & OFFICE



EXTERIOR LOADING & STORAGE AREA



EXTERIOR LOADING & STORAGE AREA



RECEPTION & OFFICE

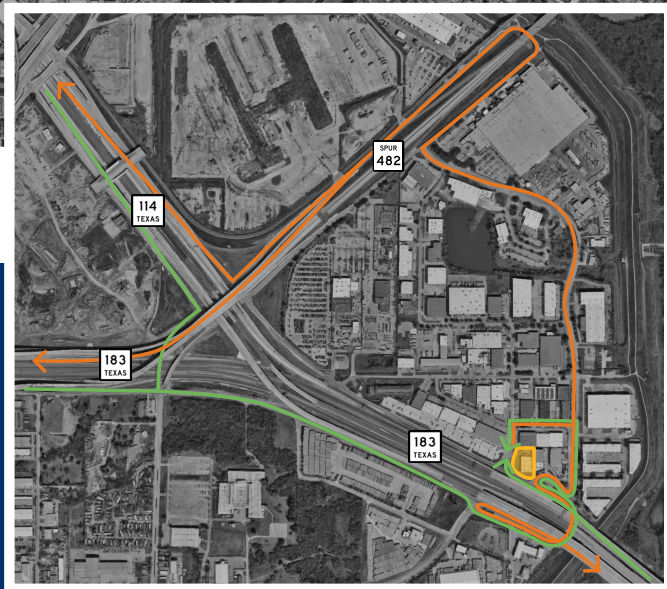


RECEPTION & OFFICE

**GIOVANNI SCARDINO**  
giovanni.scardino@streamrealty.com  
214.210.6607

**JACK RATHE**  
jack.rathe@streamrealty.com  
972.655.9067





## LOCATION HIGHLIGHTS

**11 min.**  
LOVE FIELD AIRPORT

**13 min.**  
DALLAS CBD

**14 min.**  
DFW INTERNATIONAL AIRPORT

Listing provided by Stream Realty Partners, Inc. All rights reserved. © 2023 Stream Realty Partners, Inc.

**GIOVANNI SCARDINO**  
giovanni.scardino@streamrealty.com  
214.210.6607

**JACK RATHE**  
jack.rathe@streamrealty.com  
972.655.9067

