

# OFFICE/MEDICAL OFFICE FOR LEASE

VIRTUAL TOURS AVAILABLE - LINKS ON PAGE 3



900 LONG LAKE

**900 LONG LAKE ROAD, NEW BRIGHTON, MN**



900 Long Lake | 900 Long Lake Road, New Brighton, MN

# PROPERTY INFORMATION

## PROPERTY FEATURES



Exceptional Class B building



Lake Views



Recently renovated common areas & fitness



Outdoor Patio (new 2023)



Direct access to I-35W and I-694



Many area amenities, hotels, and restaurants

## BUILDING INFORMATION

### Building Size

- 67,159 SF

### Operating Expenses & Taxes (2024 est.)

- Operating Expenses ..... \$ 9.17 PSF
- Real Estate Taxes ..... \$ 2.40 PSF
- Total ..... \$ 11.57 PSF



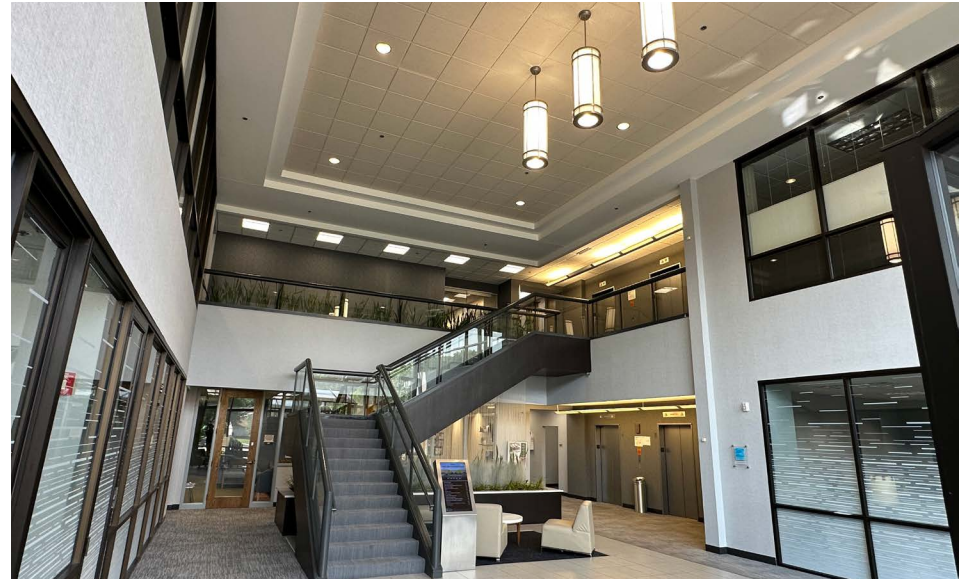
900 Long Lake | 900 Long Lake Road, New Brighton, MN

# PROPERTY AVAILABILITIES

Suite Number	Square Footage	
210	1,487	
300	6,938	Available: 6/1/2024
310	10,221	<b>VIRTUAL TOUR</b>
330	1,801	

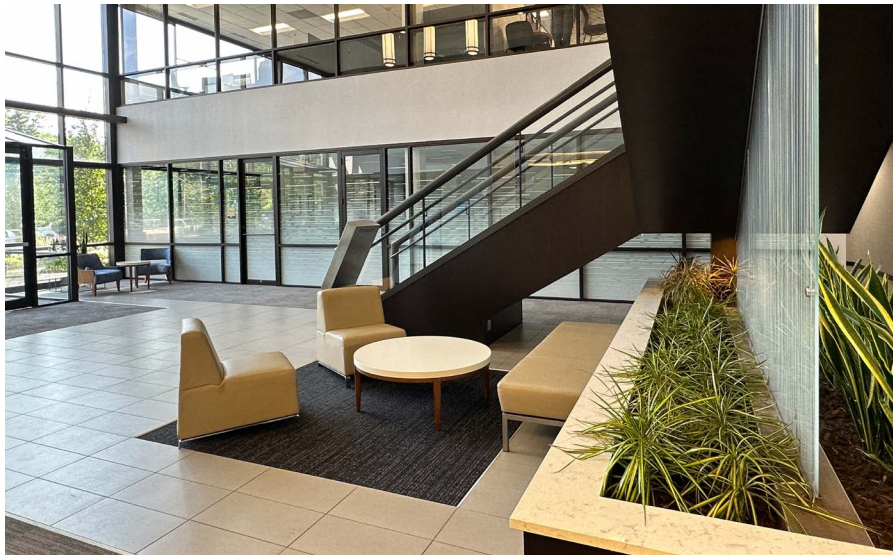
Click Below to view Virtual Tour

**LOBBY**



900 Long Lake | 900 Long Lake Road, New Brighton, MN

# PROPERTY IMAGES

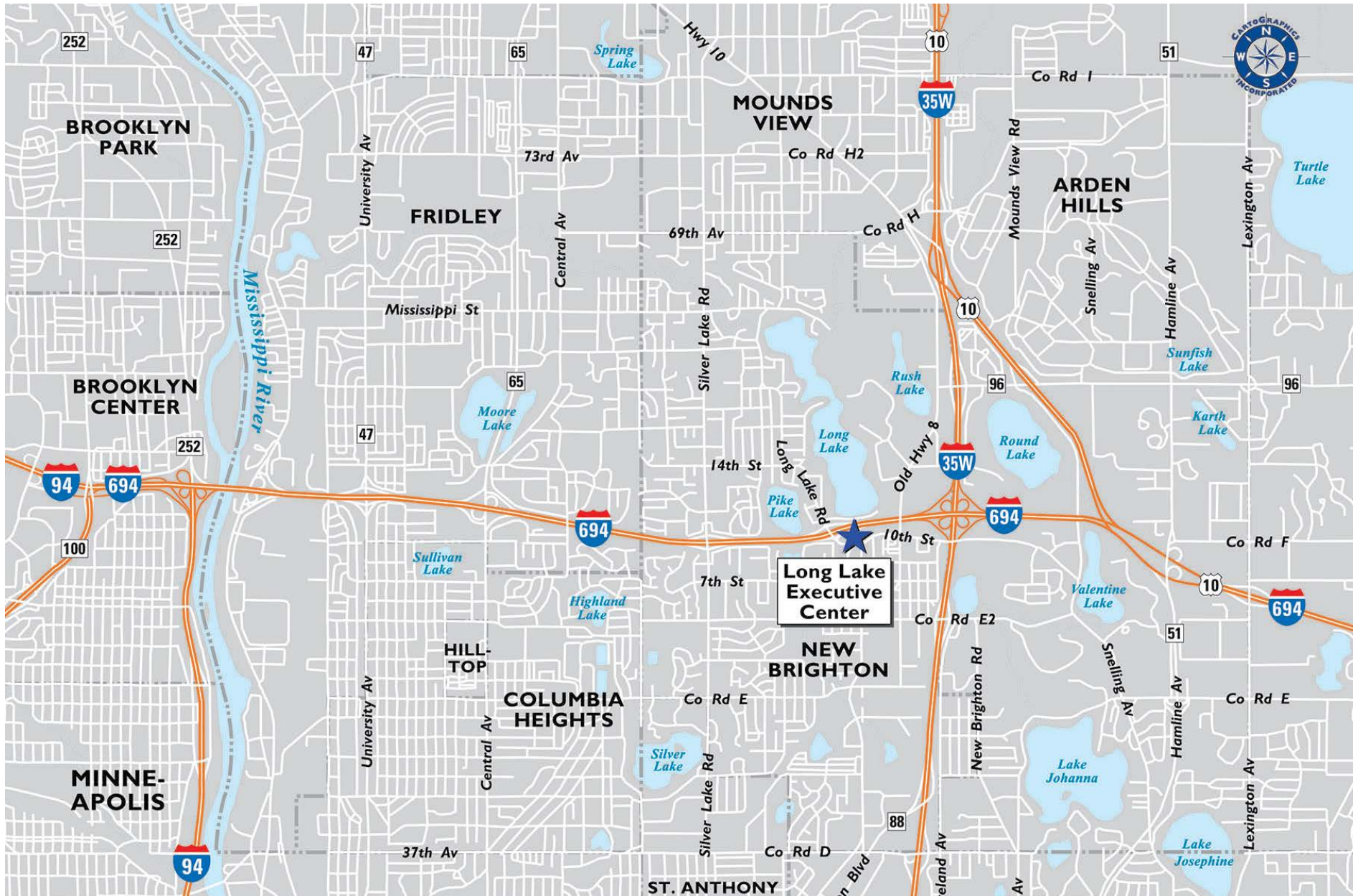


900 Long Lake | 900 Long Lake Road, New Brighton, MN



PROPERTY  
**AERIAL**

900 Long Lake | 900 Long Lake Road, New Brighton, MN



# PROPERTY MAP



**CUSHMAN &  
WAKEFIELD**

# CONTACT INFORMATION

**AARON BARNARD, SIOR, CCIM**

Senior Director  
+1 952 465 3372  
aaron.barnard@cushwake.com

**RYAN HAMPSON**

Senior Associate  
+1 952 465 3309  
ryan.hampson@cushwake.com

3500 American Blvd W Suite 200  
Bloomington, MN 55431-1096  
+1 952 831 1000  
cushmanwakefield.com