

INDUSTRIAL WAREHOUSE SPACE FOR LEASE SUNRISE INDUSTRIAL PARK

2650 MERCANTILE DRIVE, RANCHO CORDOVA, CA



LISTING DATA

BUILDING SIZE: 45,000± SF

AVAILABLE SF: 17,500± SF

DIVISIVBLE TO: 5,000± SF

COMMENTS:

SUITE B: 5,000± SF

- Includes:
 - One (1) restroom
 - One (1) grade level door

SUITE: C/D 12,500± SF

- Includes:
 - 1,100± SF office
 - Reception/Bullpen
 - Two (2) restrooms
 - Two (2) grade level doors
- Concrete Tilt-up Construction
- Sprinklers
- M-1 Zoning
- Monument Signage Available
- Year Built: 1982
- Immediate I-50 Access
- Nearby Retail Services and Amenities
- Professional Image and Quality Landscaping



ECONOMIC DATA

LEASE RATE: \$.65 PSF, NNN

CONTACT **Darren McFadden**

BRE # 01276439

dmcfadden@lee-associates.com

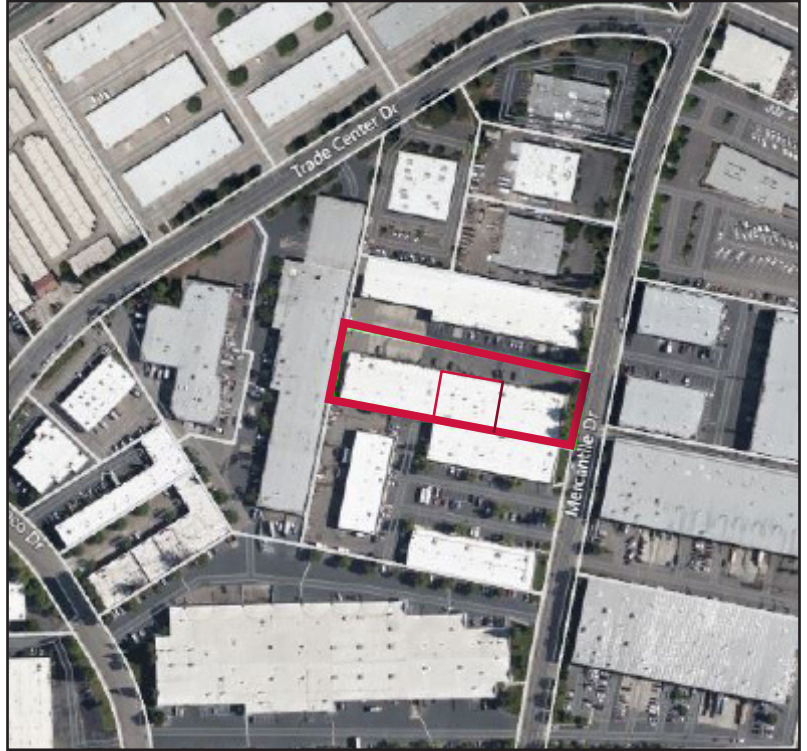
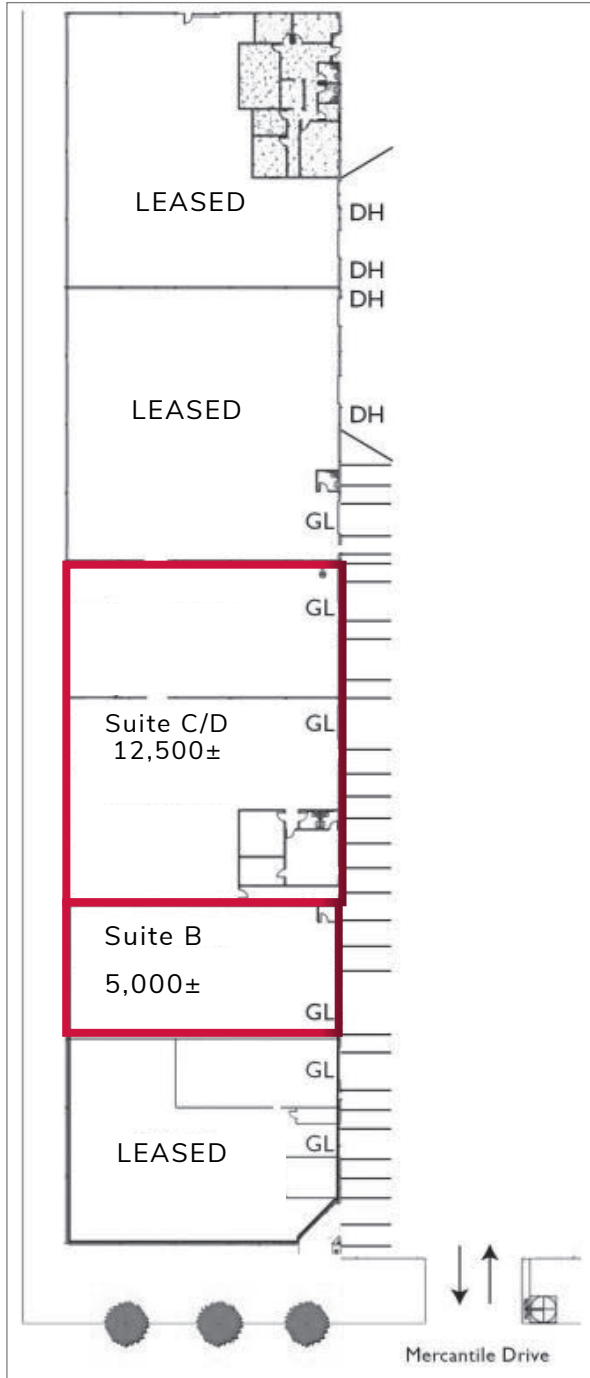
D 209.983.6821

C 209.598.1180

INDUSTRIAL WAREHOUSE SPACE FOR LEASE SUNRISE INDUSTRIAL PARK

2650 MERCANTILE DRIVE, RANCHO CORDOVA, CA

LEE & ASSOCIATES
COMMERCIAL REAL ESTATE SERVICES

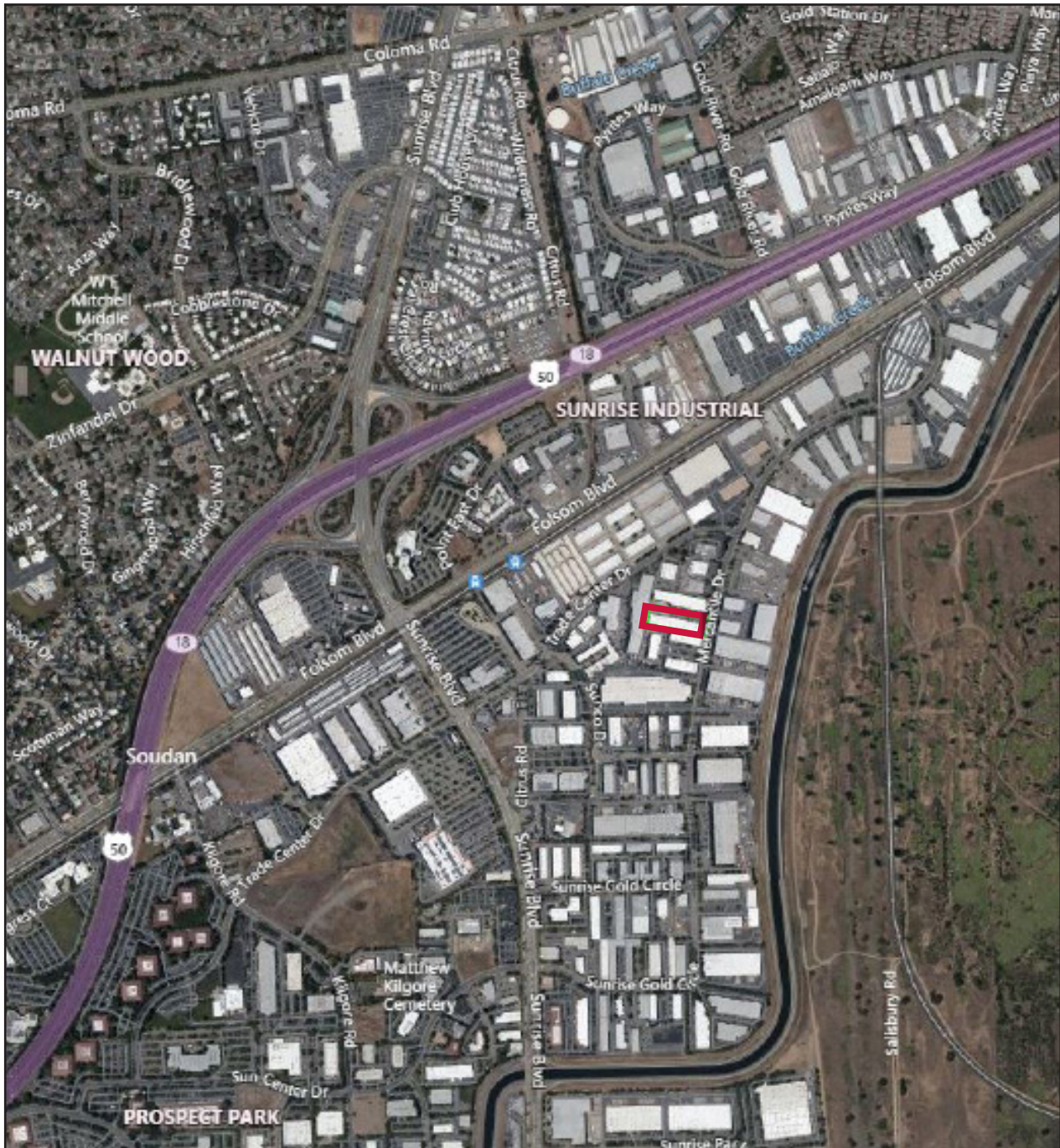


CONTACT **Darren McFadden**
BRE # 01276439
dmcfadden@lee-associates.com
D 209.983.6821
C 209.598.1180

All information furnished regarding property for sale, rental or financing is from sources deemed reliable, but no warranty or representation is made to the accuracy thereof and same is submitted to errors, omissions, change of price, rental or other conditions prior to sale, lease or financing or withdrawal without notice. No liability of any kind is to be imposed on the broker herein.

INDUSTRIAL WAREHOUSE SPACE FOR LEASE SUNRISE INDUSTRIAL PARK

2650 MERCANTILE DRIVE, RANCHO CORDOVA, CA



CONTACT **Darren McFadden**

BRE # 01276439

dmcfadden@lee-associates.com

D 209.983.6821

C 209.598.1180

All information furnished regarding property for sale, rental or financing is from sources deemed reliable, but no warranty or representation is made to the accuracy thereof and same is submitted to errors, omissions, change of price, rental or other conditions prior to sale, lease or financing or withdrawal without notice. No liability of any kind is to be imposed on the broker herein.